

## GEBCO\_08 Grid - artefacts in some coastal regions of the Irish Sea

There are anomalous deep water areas shown in the GEBCO\_08 Grid for some coastal regions in the Irish Sea, i.e. the Solway Firth, Morecambe Bay, the Dee Estuary, the Mersey Estuary and approaches to Anglesey. This is shown in Figure 1 below. The deeper areas are shown in yellow, green and blue.

These deeps are artefacts created during the generation of the grid.

The GEBCO\_08 Grid has been generated by combining measured depth data (collected by ships) with satellite-derived depth estimates in regions where measured data are not available. For these anomalous deep regions, as shown in Figure 1, the depth value in the grid has been interpolated and is not based on actual soundings.

The GEBCO\_08 Grid is accompanied by a Source Identifier (SID) Grid. This shows which cells in the GEBCO\_08 Grid have been constrained by bathymetry data and which have been interpolated.

Figure 2 shows data from the SID Grid (shown as black dots/lines) overlain on the GEBCO\_08 Grid.

Please see the documentation which accompanies the data set for more information on the generation of the GEBCO\_08 Grid.

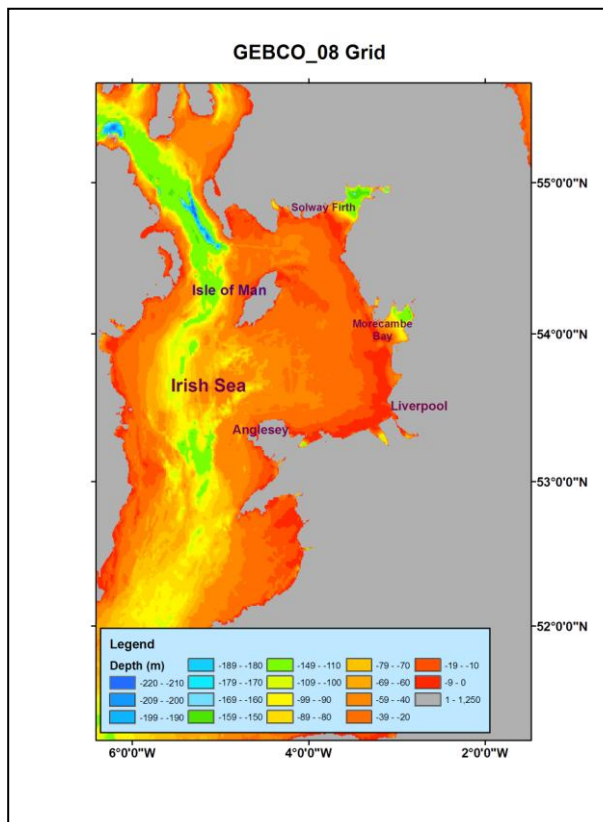


Figure 1

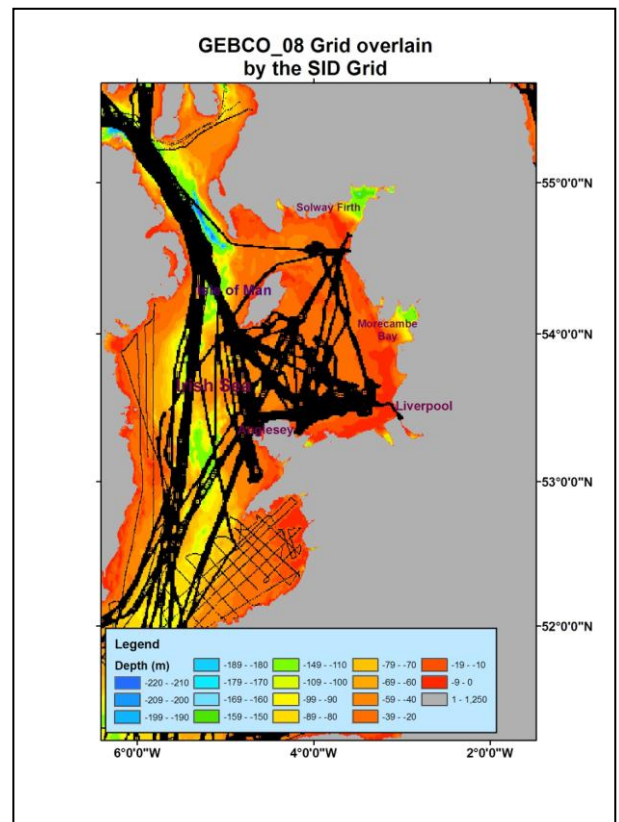


Figure 2