

GEBCO_08 Grid - artifacts in the Bay of Seine region

There are anomalous deep areas shown in the GEBCO_08 Grid in the shallower water areas of the Bay of Seine ($1^{\circ} 49'W$; $48^{\circ} 45'N$). This is shown in Figure 1 below.

These deeps are artifacts created during the generation of the grid.

The GEBCO_08 Grid has been generated by combining measured depth data (collected by ships) with satellite-derived depth estimates in regions where measured data are not available. For these anomalous regions, as shown in Figure 1, the depth value in the grid has been interpolated and is not based on actual soundings.

The GEBCO_08 Grid is accompanied by a Source Identifier (SID) Grid. This shows which cells in the GEBCO_08 Grid have been constrained by bathymetry data and which have been interpolated.

Figure 2 shows data from the SID Grid (shown as black dots/lines) overlain on the GEBCO_08 Grid.

Please see the documentation which accompanies the data set for more information on the generation of the GEBCO_08 Grid.

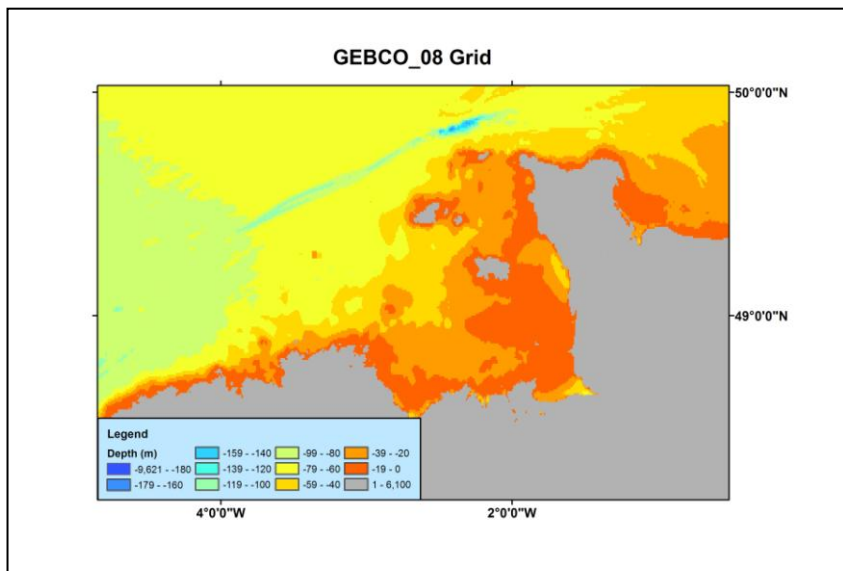


Figure 1

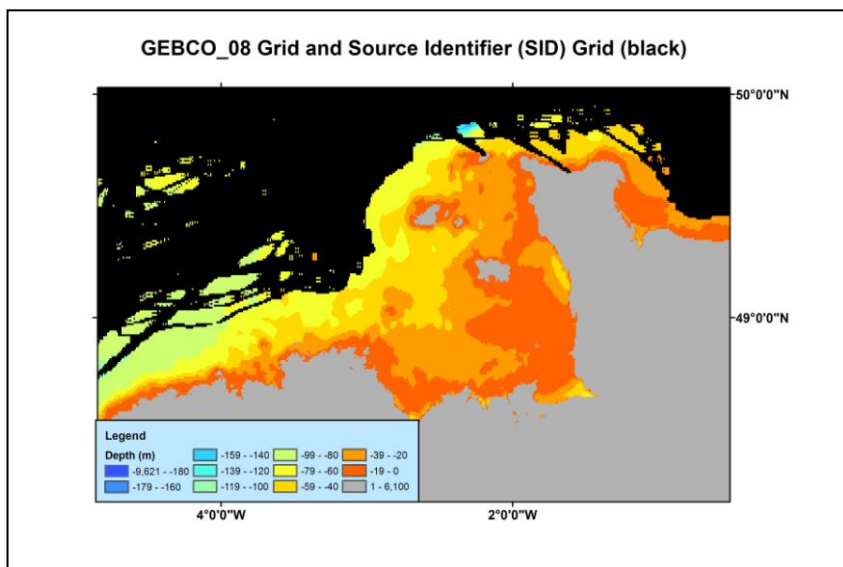


Figure 2