



General Bathymetric Chart of the Oceans



The Centenary Edition of the GEBCO Digital Atlas



Published by the British Oceanographic Data Centre (BODC) on behalf of the International Hydrographic Organisation (IHO) and the Intergovernmental Oceanographic Commission (IOC) of UNESCO.

GEBCO is an international reference map of the seafloor depth of the world's oceans. It is produced under the joint auspices of the IHO and IOC.

Originally published in chart form, GEBCO is now maintained at BODC in the form of a digital atlas. It contains a global set of bathymetric contour vectors and a global one minute interval grid. Update material is provided by an international community of geoscientists with expertise in bathymetric mapping.

GEBCO was initiated in 1903 by Prince Albert I of Monaco. The **Centenary Edition of the GEBCO Digital Atlas** was released in April 2003 to coincide with this anniversary.

The GEBCO Digital Atlas, GDA, was first published by BODC in 1994. It was produced by digitising the bathymetric contours, coastline and trackline control data from the printed sheets of the Fifth Edition of GEBCO. An updated

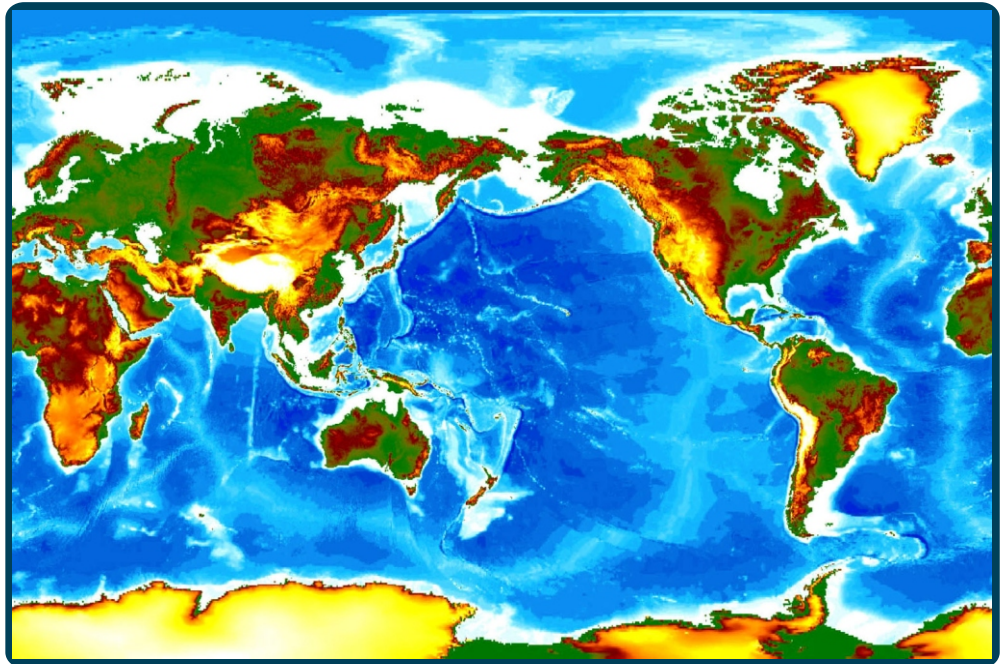


Image produced from the GEBCO One Minute Grid

version was released in 1997. The distribution of the first two releases has been highly successful and the GDA is in use by almost 1000 organisations in 96 countries worldwide.

The Centenary Edition of the GDA incorporates major revisions of the

bathymetry of the Arctic Ocean, the Indian Ocean, the north-east and central-eastern Atlantic, the Caribbean Sea and the Gulf of Mexico, the Weddell Sea and waters around New Zealand. Just as importantly, the Centenary Edition also includes the first release of the GEBCO One Minute Grid, providing bathymetric data on a one minute global grid. This grid was generated largely from the GEBCO bathymetric contours. Land elevations from the Global Land One-km Base Elevation (GLOBE) database are also included.

As with previous releases of the GDA, trackline control information is included to highlight the data used in its compilation.

The GDA is accompanied by a Microsoft Windows software interface which allows users to view the GEBCO Bathymetry in a variety of forms and projections and to select and download contour vectors and gridded data for use in their own applications.

Contents of the Centenary Edition of the GDA

Bathymetric contours, coastlines and trackline control data from the April 2003 version of the GEBCO Digital Atlas (including new bathymetry for the Arctic and Indian Oceans as well as updates for areas of the North Atlantic, the Weddell Sea and the waters around New Zealand)

The GEBCO One Minute Bathymetric Grid

Five Minute version of the One Minute Grid

World Vector Shoreline (North of 60°S)

SCAR Coastline of Antarctica (version 3.0)

Trackline Inventory of echo-sounding data held at IHO Data Centre for Digital Bathymetry (as of June 2002)

Digital set of geographically referenced feature names, including IHO/IOC Gazetteer of Geographic Names of Undersea Features

Further details can be found on our web site at:

<http://www.bodc.ac.uk/gebco>

Features of the Software Interface

Bathymetric Contours can be selected from the GEBCO or the IBCM chart series

The GEBCO One Minute Grid can be displayed with colour coding according to depth/elevation

The gridded data can be exported in either NetCDF or ASCII format

The vector data sets can be exported in either ASCII, DXF or ESRI Shapefile formats

Choice of resolution for WVS and SCAR coastlines

Choice of 5 map projections

Select a geographic area of interest by chart number, exact co-ordinates or by on screen zoom box

Zoom into and pan across your selected area

Overlay geographic grid for reference

Draw profile plots across the data set

Select/de-select contours and assign depth colours

Cursor query on contour depths

Current cursor position constantly displayed in geographic co-ordinates

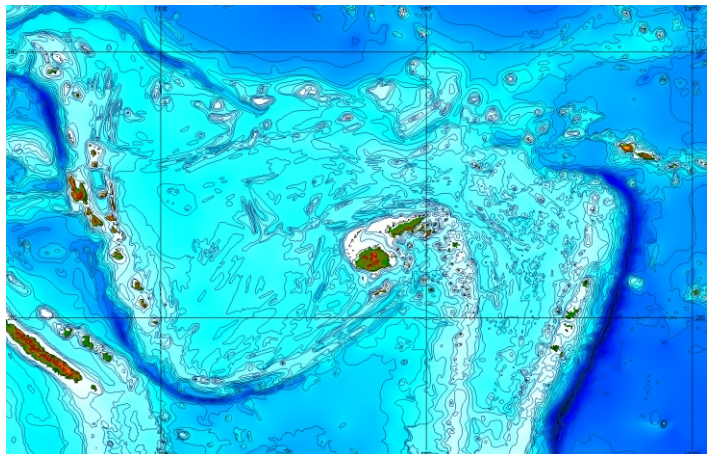
Overlay trackline control data

Query survey boxes for source information

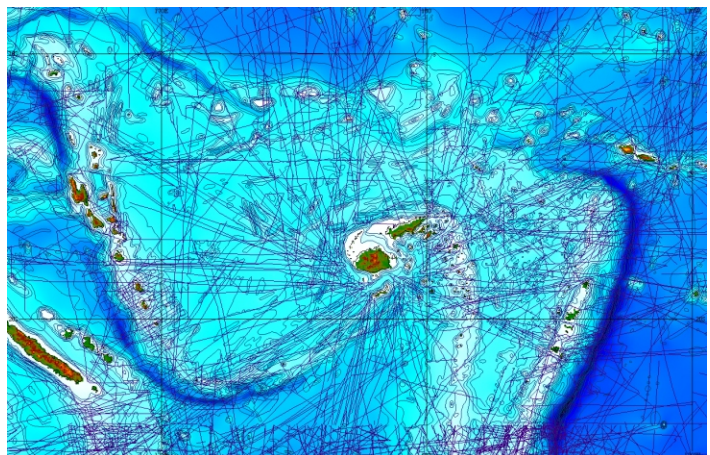
Overlay tracklines showing data held at the IHO Data Centre for Digital Bathymetry

Display symbols for named undersea features, ports and oceanic islands; cursor query on symbol will reveal name and supporting documentation

Sample images produced from the GEBCO Digital Atlas Software Interface



Bathymetric contours can be overlain on the gridded data set



Trackline control information can be overlain to show the distribution of data used in the compilation of the contours

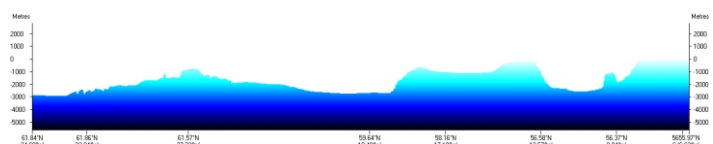
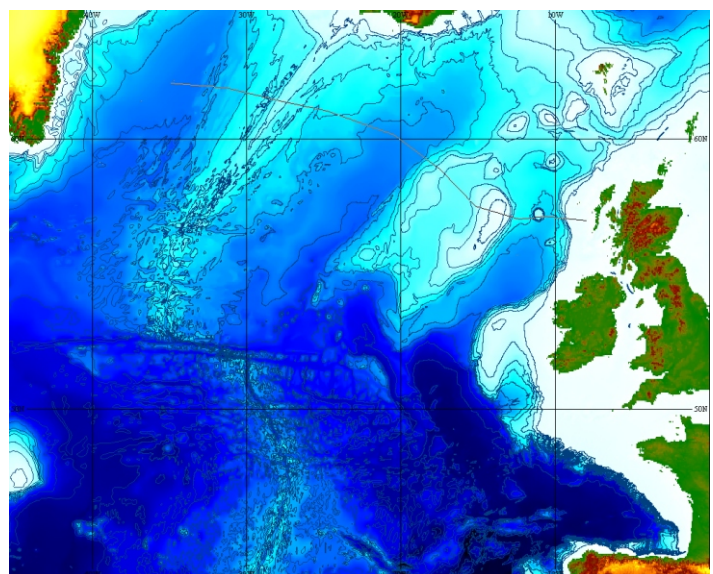
How to Order the GDA

The Centenary Edition of the GDA CD-ROM set including data sets, software and accompanying documentation is available at a price of 230 pounds sterling, inclusive of postage and packing. A special price of 99 pounds is available to educational and academic research establishments. VAT at 15% is applicable for orders placed within the European Union.

Order forms are available from our web site at <http://www.bodc.ac.uk/gebco> or from GEBCO Orders.

GEBCO Orders,
British Oceanographic Data Centre,
Joseph Proudman Building,
Brownlow St.,
Liverpool,
L3 5DA, UK

Email: enquiries@bodc.ac.uk
Tel: +44 (0)151 795 4800



Profile plot produced from the GDA data set