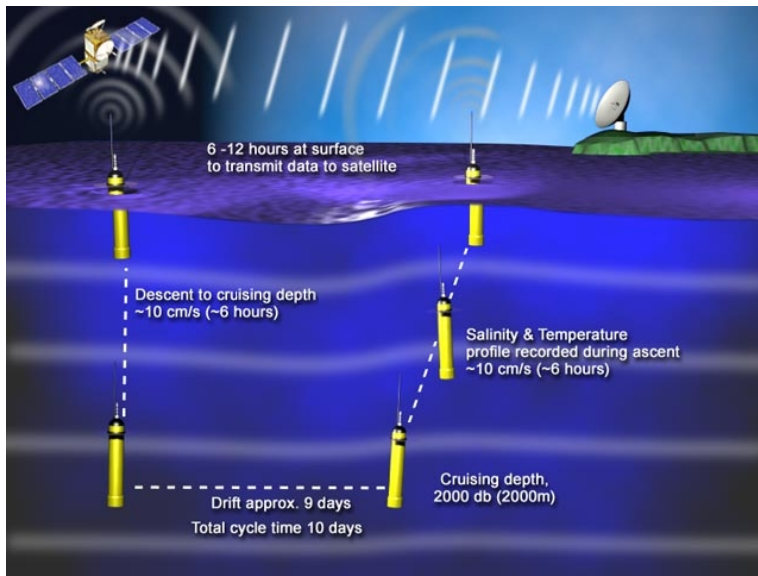


ARGO

What is Argo?

Argo is an international project that aims to maintain a global array of 3,000 free-drifting floats. Each year 100,000 profiles of temperature and salinity from the top 2 kilometres of ocean are reported.



Deployment

Argo floats can be deployed over the sides of ships and from aircraft.



Argo Operation

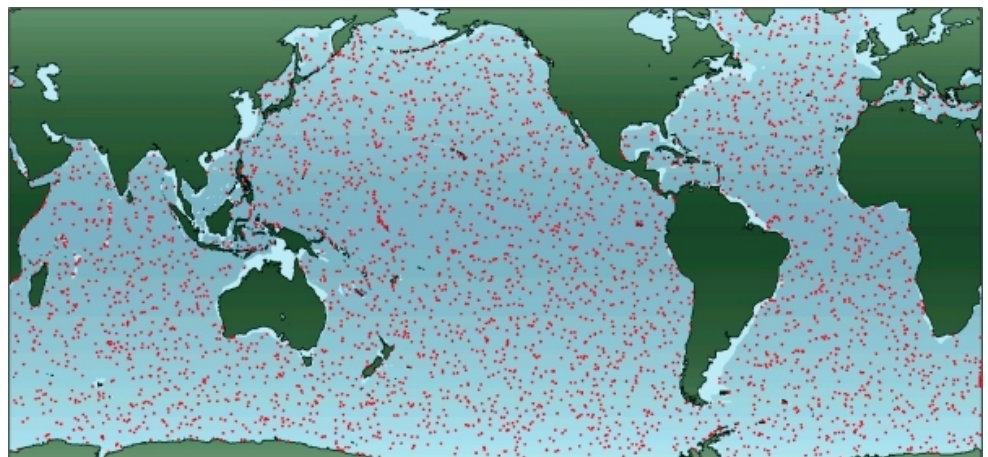
All mission parameters can be varied from float to float. These include time spent at depth, time on the surface, drift depth and vertical sampling resolution.

UK Argo will:

Deploy ~50 floats each year, maintaining about 150 - 200 UK floats in the water at any time.

Apply all real-time Argo data for ocean analysis and forecasting using the Met. Office Forecasting Ocean Assimilation Model (FOAM).

Use Argo data to detect the signals of climate change in the ocean.



Potential Coverage (3000 float array)

<http://www.bodc.ac.uk/projects/argo/argo.html>

BODC are in partnership with:



**Southampton
Oceanography Centre**
UNIVERSITY OF SOUTHAMPTON AND
NATURAL ENVIRONMENT RESEARCH COUNCIL

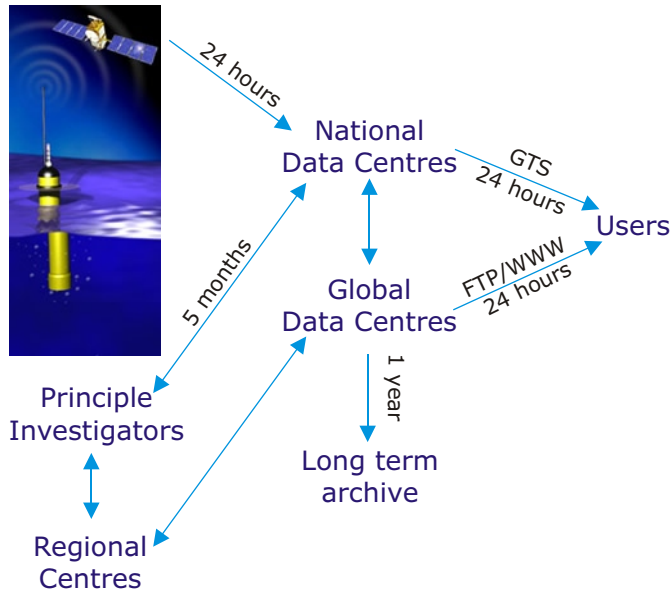


THE UNITED KINGDOM
HYDROGRAPHIC OFFICE





Global Data Flow

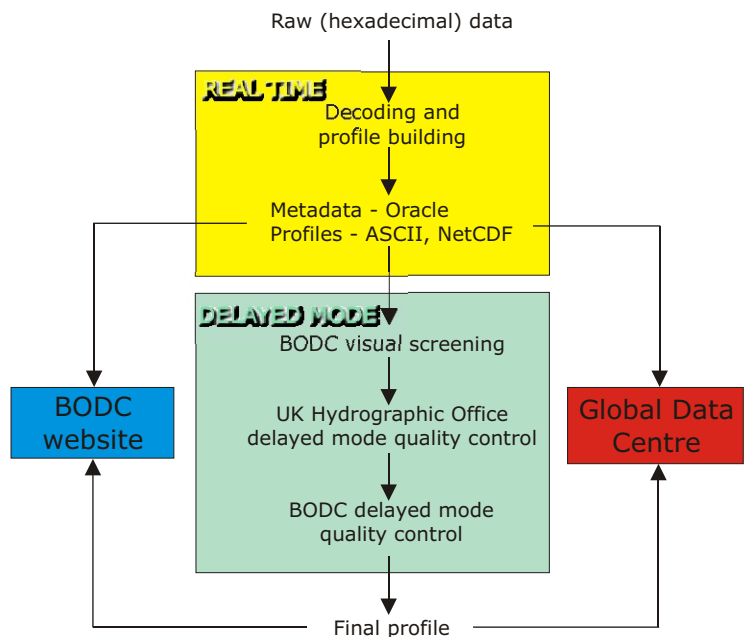


UK ARGO Data Centre

BODC is the UK Argo Data Centre for UK floats in the Argo programme regardless of their location.

Data are received within 24 hours of the float surfacing. The data are processed and real-time quality control checks are performed before serving to the Global Data Centres (GDACs).

UK Data Flow

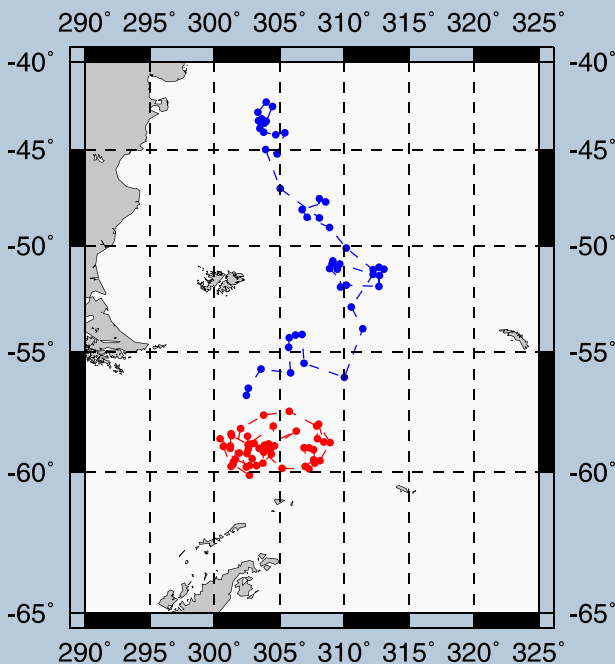


Delayed mode quality control of all UK float data is done in conjunction with the UK Hydrographic Office.

Delayed mode quality control includes visually screening for erroneous data points and comparison against historical data, climatology and other nearby Argo floats.

The UK Argo Data website allows near real time access to all UK Argo data, has an interactive map that provides information about each UK float and provides general information about the Argo project.

Southern Ocean Regional Data Centre



Trajectories of two example floats deployed in the Southern Ocean.

BODC is the Southern Ocean Regional Data Centre and collaborates with the international Argo community in the management, exchange and dissemination of data; including the development and adoption of common protocols and procedures.

Basin scale regional quality control is carried out and products are tailored to best meet the scientific requirements of the community generated.