

876 Dosimat plus



Manual

8.876.8003EN / 2014-11-25



Metrohm AG
CH-9100 Herisau
Switzerland
Phone +41 71 353 85 85
Fax +41 71 353 89 01
info@metrohm.com
www.metrohm.com

876 Dosimat plus

Manual

Technische Dokumentation
Metrohm AG
CH-9100 Herisau
techdoc@metrohm.com

This documentation is protected by copyright. All rights reserved.

This document has been prepared with great care. However, errors can never be entirely ruled out. Please send comments regarding possible errors to the address above.

Documentation in additional languages can be found on
<http://documents.metrohm.com>.

Table of contents

1	Introduction	1
1.1	Instrument description	1
1.1.1	Dosing modes	1
1.1.2	Connectors	1
1.2	Intended use	2
1.3	About the documentation	2
1.3.1	Symbols and conventions	2
1.4	Safety instructions	3
1.4.1	General notes on safety	3
1.4.2	Electrical safety	3
1.4.3	Tubing and capillary connections	4
1.4.4	Flammable solvents and chemicals	5
1.4.5	Recycling and disposal	5
2	Overview of the instrument	6
2.1	876 Dosimat plus	6
2.2	Manual Dosing Controller	8
3	Installation	9
3.1	Setting up the instrument	9
3.1.1	Packaging	9
3.1.2	Checks	9
3.1.3	Location	9
3.2	Connecting a stirrer	9
3.3	Connecting the Manual Dosing Controller	10
3.4	Connecting a balance	10
3.5	Connecting a keyboard, printer and other USB devices	11
3.6	Connecting instruments to the remote connector	13
3.7	Connecting the 805 Dosimat	14
3.8	Attaching the exchange unit	15
4	Operation	16
4.1	Switching the instrument on and off	16
4.2	Fundamentals of operation	17
4.2.1	The keypad	17
4.2.2	Structure of the dialog windows	18
4.2.3	Navigating in the dialog	18



4.2.4	Entering text and numbers	19
4.2.5	Selecting from a selection list	20
4.3	Methods	20
4.3.1	Method templates	20
4.3.2	Creating a new method	20
4.3.3	Saving a method	21
4.3.4	Loading a method	22
4.3.5	Exporting a method	23
4.4	Stirrer operation	24
4.5	Entering sample data	25
4.6	Preparing the buret unit (PREP)	26
4.7	Printing a report manually	27
5	System settings	29
5.1	Basic settings	29
5.2	Managing solutions	32
5.2.1	General	32
5.2.2	Editing the solution data	32
5.3	File management	34
5.4	Configuring external devices	35
5.5	Instrument diagnosis	38
5.5.1	Loading program versions and language files	38
5.5.2	Diagnosis functions	39
6	Parameters and dosing modes	40
6.1	Manual dosing (DOS)	40
6.1.1	General description	40
6.1.2	Selecting a solution	41
6.1.3	Dosing parameters	41
6.1.4	Calculation	42
6.1.5	Reports	44
6.1.6	Pulse control	45
6.2	Extended dosing (XDOS)	46
6.2.1	General description	46
6.2.2	Selecting a solution	47
6.2.3	Selecting the operating mode	47
6.2.4	Dosing parameters	48
6.2.5	Reports	49
7	Operation and maintenance	51
7.1	General	51
7.2	Quality management and qualification with Metrohm ..	51

8	Appendix	52
8.1	Exchange unit	52
8.1.1	Maximum dosing and filling rate	52
8.1.2	Parameters for the preparing (PREP)	52
8.2	Stirring rate	53
8.3	Balance	53
8.4	USB devices	54
8.4.1	6.2147.000 numerical USB keypad	54
8.4.2	Key assignment of a USB keyboard	55
8.4.3	Printer	55
8.5	System initialization	56
8.6	Remote interface	57
8.6.1	Pin assignment of the remote interface	57
8.6.2	Status diagram of the remote interface	58
8.7	Pulse control	60
8.8	Remote control via an RS-232 connection	61
8.8.1	Commands and variables	62
9	Technical specifications	64
9.1	Dosing drive	64
9.2	Interfaces	64
9.3	Power connection	64
9.4	Safety specifications	65
9.5	Electromagnetic compatibility (EMC)	65
9.6	Ambient temperature	66
9.7	Reference conditions	66
9.8	Dimensions	66
10	Accessories	67
	Index	69



Table of figures

Figure 1	Front 876 Dosimat plus	6
Figure 2	Rear 876 Dosimat plus	7
Figure 3	Manual Dosing Controller 6.2107.100	8
Figure 4	Connecting a stirrer	9
Figure 5	Connecting the Manual Dosing Controller	10
Figure 6	Connecting a balance	10
Figure 7	Connecting USB devices	11
Figure 8	Connecting the USB stick	12
Figure 9	Connecting the 6.2147.000 USB keyboard with USB stick and printer	13
Figure 10	Connecting the USB hub with USB stick, printer and the 6.2148.030 RS-232/USB Box (for connecting balances).	13
Figure 11	Connecting a remote cable	13
Figure 12	Connecting the 805 Dosimat	14
Figure 13	MSB connector on the 801 Stirrer	14
Figure 14	Attaching the exchange unit	15
Figure 15	Keypad 876 Dosimat plus	17
Figure 16	Directory structure on the USB flash drive	35
Figure 17	Dosing ramp, two examples	42
Figure 18	Tandem operation	48
Figure 19	Rotational speed depending on stirring rate	53
Figure 20	Pin assignment of remote socket and remote plug	57
Figure 21	Remote status diagram DOS	58
Figure 22	Remote status diagram DOS with pulse control	59
Figure 23	Remote status diagram XDOS	59
Figure 24	Connecting the RS-232/USB Box to the PC	61

1 Introduction

1.1 Instrument description

The 876 Dosimat plus is an all-purpose dosing device. Methods can be created and saved under a new name. If a USB flash drive is connected as an external storage medium, the methods can be exported to a connected USB flash drive. This function allows you to copy methods quickly and easily from one device to another. The remote connector makes it possible to integrate the device into a Metrohm automation system.

1.1.1 Dosing modes

The following dosing modes are supported:

- **DOS**
Manual dosing.
- **XDOS**
Fixed volume dosing, with user-selectable dosing criteria.

1.1.2 Connectors

The instrument is equipped with the following connectors:

- **MSB connector (Metrohm Serial Bus)**
For connecting a stirrer and an 805 Dosimat for tandem dosings.
- **USB (OTG) connector**
The 6.2151.100 adapter can be used to connect, for example, a printer, a USB flash drive or a USB keyboard. The 6.2151.120 cable can be used to connect a printer directly.
- **Remote connector**
For connecting the dosing handle, a Titrino plus or a sample changer.



1.2 Intended use

The 876 Dosimat plus has been designed for use in laboratories and production companies. Its main area of use is the precise dosing of liquids. This includes simple dosing according to specific criteria and manual titrations.

This instrument is suitable for dosing chemicals and flammable solvents. Usage of the 876 Dosimat plus therefore requires the user to have basic knowledge and experience in handling toxic and caustic substances. Knowledge with respect to the application of the fire prevention measures prescribed for laboratories or production plants is also mandatory.

1.3 About the documentation



CAUTION

Please read through this documentation carefully before putting the instrument into operation. The documentation contains information and warnings which the user must follow in order to ensure safe operation of the instrument.

1.3.1 Symbols and conventions

The following symbols and formatting may appear in this documentation:

(5-12)

Cross-reference to figure legend

The first number refers to the figure number, the second to the instrument part in the figure.

1

Instruction step

Carry out these steps in the sequence shown.

Method

Dialog text, parameter in the software

File ► New

Menu or menu item

[Next]

Button or **key**



WARNING

This symbol draws attention to a possible life-threatening hazard or risk of injury.

**WARNING**

This symbol draws attention to a possible hazard due to electrical current.

**WARNING**

This symbol draws attention to a possible hazard due to heat or hot instrument parts.

**WARNING**

This symbol draws attention to a possible biological hazard.

**CAUTION**

This symbol draws attention to possible damage to instruments or instrument parts.

**NOTE**

This symbol highlights additional information and tips.

1.4 Safety instructions

1.4.1 General notes on safety

**WARNING**

This instrument may only be operated in accordance with the specifications in this documentation.

This instrument has left the factory in a flawless state in terms of technical safety. To maintain this state and ensure non-hazardous operation of the instrument, the following instructions must be observed carefully.

1.4.2 Electrical safety

The electrical safety when working with the instrument is ensured as part of the international standard IEC 61010.

**WARNING**

Only personnel qualified by Metrohm are authorized to carry out service work on electronic components.

**WARNING**

Never open the housing of the instrument. The instrument could be damaged by this. There is also a risk of serious injury if live components are touched.

There are no parts inside the housing which can be serviced or replaced by the user.

Mains voltage**WARNING**

An incorrect mains voltage can damage the instrument.

Only operate this instrument with a mains voltage specified for it (see rear panel of the instrument).

Protection against electrostatic charges**WARNING**

Electronic components are sensitive to electrostatic charges and can be destroyed by discharges.

Do not fail to pull the mains cable out of the mains connection socket before you set up or disconnect electrical plug connections at the rear of the instrument.

1.4.3 Tubing and capillary connections**CAUTION**

Leaks in tubing and capillary connections are a safety risk. Tighten all connections well by hand. Avoid applying excessive force to tubing connections. Damaged tubing ends lead to leakage. Appropriate tools can be used to loosen connections.

Check the connections regularly for leakage. If the instrument is used mainly in unattended operation, then weekly inspections are mandatory.

1.4.4 Flammable solvents and chemicals

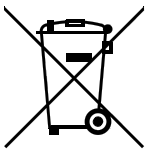


WARNING

All relevant safety measures are to be observed when working with flammable solvents and chemicals.

- Set up the instrument in a well-ventilated location (e.g. fume cupboard).
- Keep all sources of flame far from the workplace.
- Clean up spilled liquids and solids immediately.
- Follow the safety instructions of the chemical manufacturer.

1.4.5 Recycling and disposal



This product is covered by European Directive 2002/96/EC, WEEE – Waste from Electrical and Electronic Equipment.

The correct disposal of your old equipment will help to prevent negative effects on the environment and public health.

More details about the disposal of your old equipment can be obtained from your local authorities, from waste disposal companies or from your local dealer.

2 Overview of the instrument

2.1 876 Dosimat plus

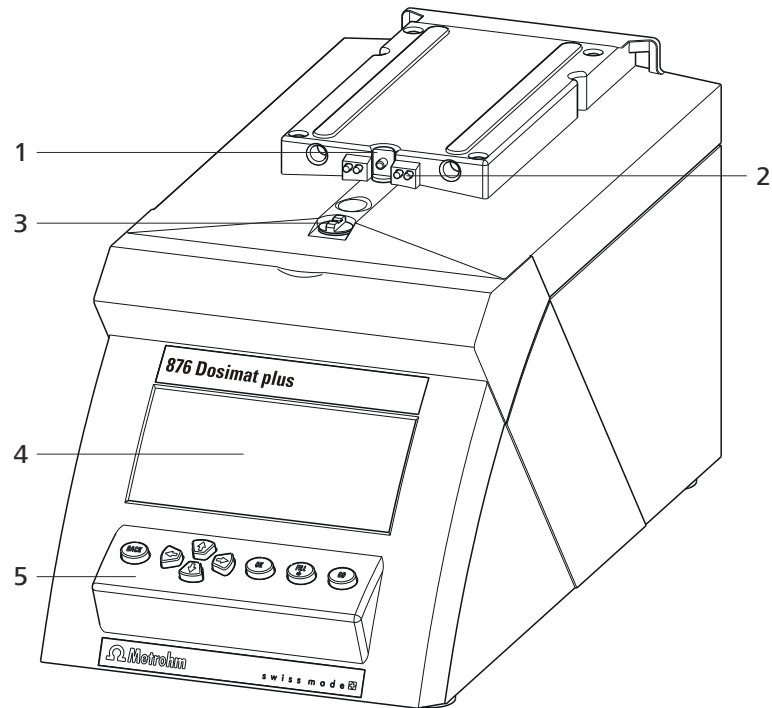


Figure 1 Front 876 Dosimat plus

1 Piston rod
Of the dosing drive.

3 Coupling
For switching the flat stopcock.

5 Keypad

2 Contact pins
For the data chip.

4 Display

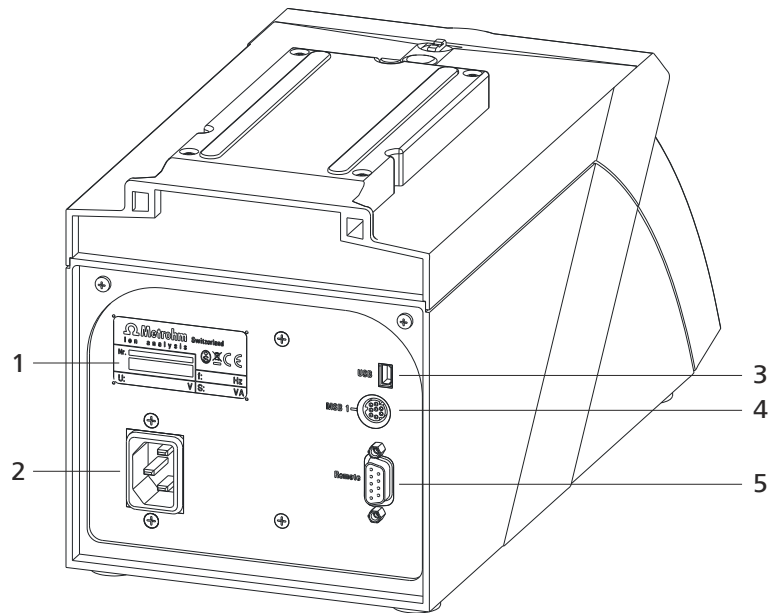


Figure 2 Rear 876 Dosimat plus

1 Type plate

Contains specifications concerning mains voltage and serial number.

3 USB (OTG) connector

For connecting printers, USB sticks, USB hubs, etc.

5 Remote connector

For connecting the Manual Dosing Controller or instruments with a remote interface. D-Sub, 9-pin.

2 Mains connection socket

4 MSB connector

Metrohm Serial Bus.

For connecting a stirrer or an 805 Dosimat. Mini DIN, 9-pin.



2.2 Manual Dosing Controller

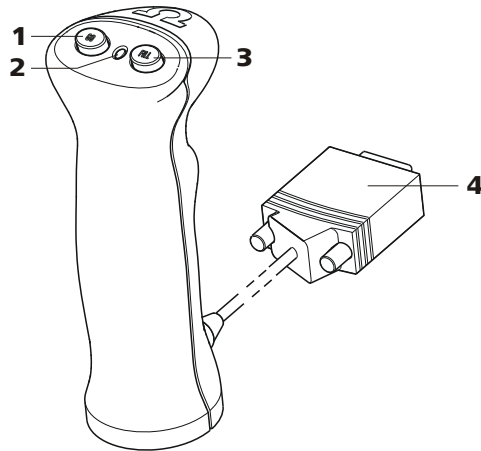


Figure 3 Manual Dosing Controller 6.2107.100

1 Dosing key To start the dosing.	2 Status LED Indicates the readiness of the instrument.
3 Stop key/Fill key For stopping and filling the dosing cylinder.	4 Connection cable With 9-pin D-Sub plug.

3 Installation

3.1 Setting up the instrument

3.1.1 Packaging

The instrument is supplied in highly protective special packaging together with the separately packed accessories. Keep this packaging, as only this ensures safe transportation of the instrument.

3.1.2 Checks

Immediately after receipt, check whether the shipment has arrived complete and without damage by comparing it with the delivery note.

3.1.3 Location

The instrument has been developed for operation indoors and may not be used in explosive environments.

Place the instrument in a location of the laboratory which is suitable for operation, free of vibrations, protected from corrosive atmosphere, and contamination by chemicals.

The instrument should be protected against excessive temperature fluctuations and direct sunlight.

3.2 Connecting a stirrer

You can connect the following stirrers:

- 801 Stirrer
- 803 Ti Stand
- 804 Ti Stand (requires rod stirrer)

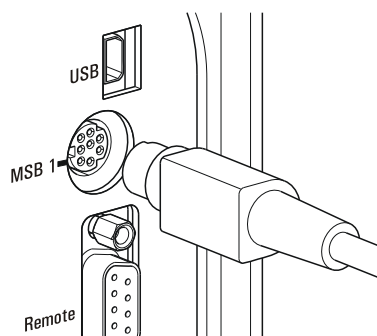


Figure 4 Connecting a stirrer

**CAUTION**

Make sure that the flat side of the plug matches the marking on the socket.

3.3 Connecting the Manual Dosing Controller

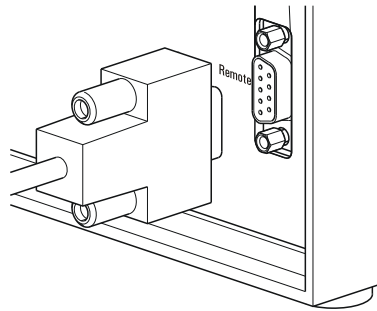


Figure 5 Connecting the Manual Dosing Controller

The Manual Dosing Controller is connected to the remote connector on the rear of the instrument.

3.4 Connecting a balance

Balances are equipped with a serial RS-232 interface as a rule. To connect a balance, you require a 6.2148.030 RS-232/USB Box.

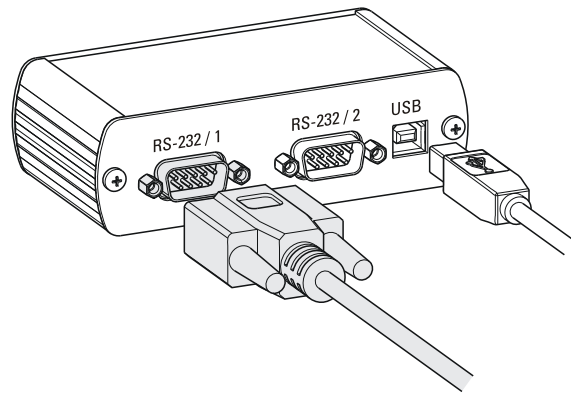


Figure 6 Connecting a balance

When a 6.2151.020 USB cable is used, then the 6.2148.030 RS-232/USB Box can be connected to the 876 Dosimat plus by means of a USB hub or a 6.2151.100 adapter (see Chapter 3.5, page 11).

Connect the 9-pin plug of the respective balance connecting cable to the **RS 232/1** connector. Consult the user manual of the balance in order to select the correct connecting cable.

The parameters for the RS-232 interface on the instrument must match those on the balance (see "Editing the COM1 settings", page 36). Additionally consult the user manual of the balance.

3.5 Connecting a keyboard, printer and other USB devices

The 876 Dosimat plus has a USB (OTG) connector. Use the provided 6.2151.100 adapter USB MINI (OTG) - USB A for connecting USB devices as e.g. printers, keyboards or USB sticks, see the following figure.

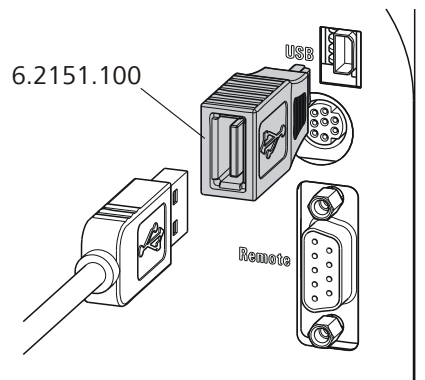


Figure 7 Connecting USB devices



CAUTION

Switch the instrument off before connecting or disconnecting a USB device or a USB stick.

The 876 Dosimat plus can only recognize the device immediately after switching on.

The following devices can be operated **directly on the USB connector with the 6.2151.100 adapter**:

- USB sticks (for the backup or storing of methods)
- 6.2147.000 numerical USB keypad
- 6.2148.030 RS-232/USB Box (for connecting balances or for the RS-232 remote control)
- USB hub (with or without an own power supply)

The **6.2147.000 numerical USB keypad** serves for comfortable numerical input and for navigating in the dialog. In addition, it provides two USB connectors. Connect additional USB devices to the keypad.

**NOTE**

Most of the USB devices need a so-called hub in order to work correctly.

A USB hub is a distributor to which several USB devices can be connected. USB hubs are available in specialty stores in a number of different models.

The USB (OTG) connector of the 876 Dosimat plus has no such hub. The 6.2147.000 numerical USB keypad has a USB hub and two USB connectors.

The following devices can **only be connected to a 6.2147.000 numerical keypad or to a USB hub**:

- Printer (with USB connector, use the 6.2151.020 connecting cable)
- Barcode reader (with USB cable)
- Mouse (PC mouse with USB cable, for navigating in the dialog)

The following devices can **only be connected to a USB hub**:

- PC keyboard (with USB cable, for the comfortable input of letters and numbers)
- Keypad with numerical keypad (with USB cable)

If you wish to connect **several different instruments without own power supply**, then you must possibly use a USB hub with own power supply (*self powered*). The USB (OTG) connector of the 876 Dosimat plus is not designed for supplying power to several devices with elevated electricity requirements.

Also observe the instructions in *chapter 8.4, page 54*.

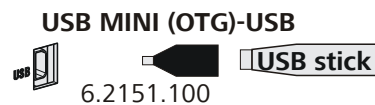
Examples:

Figure 8 Connecting the USB stick

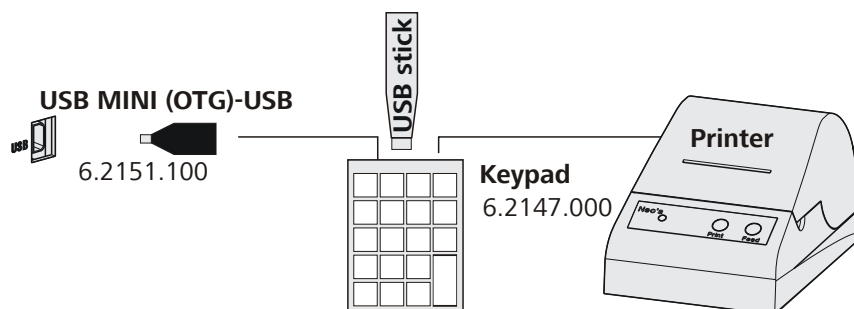


Figure 9 Connecting the 6.2147.000 USB keyboard with USB stick and printer

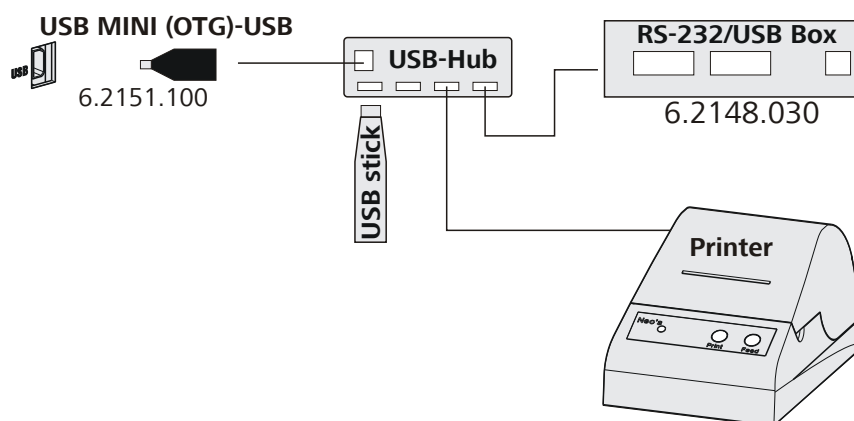


Figure 10 Connecting the USB hub with USB stick, printer and the 6.2148.030 RS-232/USB Box (for connecting balances).

3.6 Connecting instruments to the remote connector

The 876 Dosimat plus can be integrated in an automation system with the aid of a remote cable.

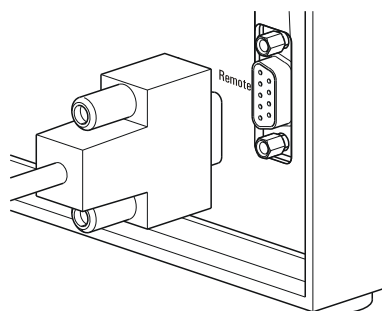


Figure 11 Connecting a remote cable

A variety of different connecting cables are available for connecting Metrohm instruments (e.g. sample changers) (see *Optional Accessories chapter*).

3.8 Attaching the exchange unit

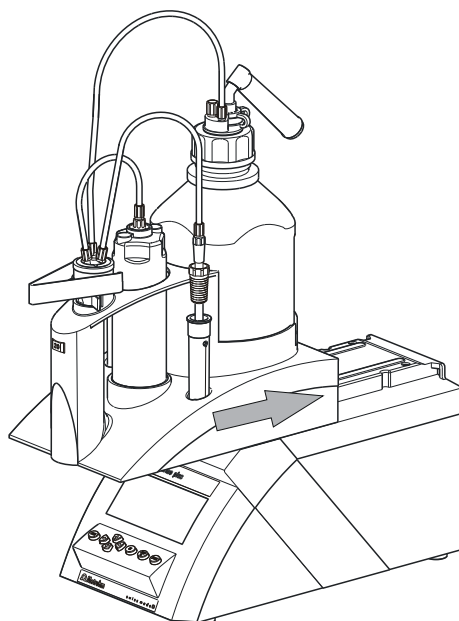


Figure 14 Attaching the exchange unit

To attach the exchange unit, proceed as follows:

- 1 Slide the exchange unit from the front onto the 876 Dosimat plus and push all the way to the rear.

It must snap in audibly.

4 Operation

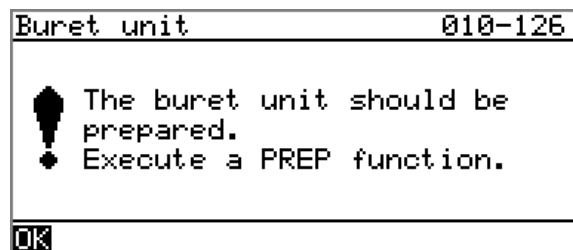
4.1 Switching the instrument on and off

Switching on the instrument

Proceed as follows:



- 1
 - Press the red **[FILL]** key.
The instrument is initialized and a system test performed. This process takes some time.
 - If a buret unit has been attached, then a request appears to carry out the **PREP** function:



All tubings and the cylinder are rinsed with the **PREP** (Preparing) function. The preparing of the buret unit is described in chapter "Preparing the buret unit (PREP)", page 26.

- Confirm the message with **[OK]**.
The display of this message can be deactivated in the system settings (see "PREP warning", page 31).

The main dialog is displayed:



Switching off the instrument

The instrument is switched off with the **[FILL]** key. The fact that the key needs to be pressed down for an extended time prevents accidental switch off.

Proceed as follows:

- 1 ▪ Keep the red **[FILL]** key pressed down for at least 3 s.
A progress bar is displayed. If the key is released during this time, then the instrument will not be switched off.

4.2 Fundamentals of operation

4.2.1 The keypad

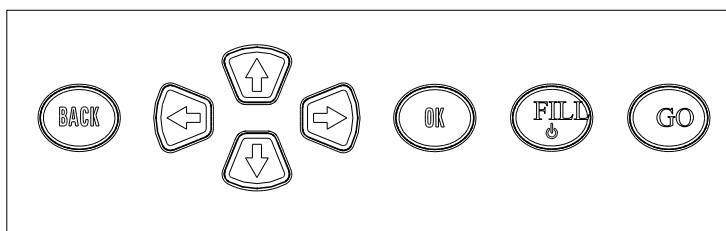


Figure 15 Keypad 876 Dosimat plus

BACK	Apply the input and exit the dialog.
↑ ↓	Move the selection bar either up or down by one line at a time. Select the character to be entered in the text editor.
← →	Select the character to be entered in the text and number editor. Select the individual functions in the function bar.
OK	Confirm the selection.
FILL	Stop an ongoing method run or a manual function. Switch the instrument on or off.
GO	Start a method run or a manual function.

4.2.2 Structure of the dialog windows

```
System ready
>Settings
>Solutions
>File management
>External devices
>Diagnosis
```

The current dialog title is displayed on the left-hand side of the title bar. The current status of the system is displayed in the upper right-hand corner:

ready	The instrument is in normal status.
busy	A method has been started.
hold	A method has been paused.

Some dialogs have a so-called function bar on the bottom line. The functions contained therein can be selected with the arrow keys [←] or [→] and executed with [OK].

```
Solution list ready
Reagent 1 *IEU
Reagent 2 EU
Edit New Delete
```

4.2.3 Navigating in the dialog

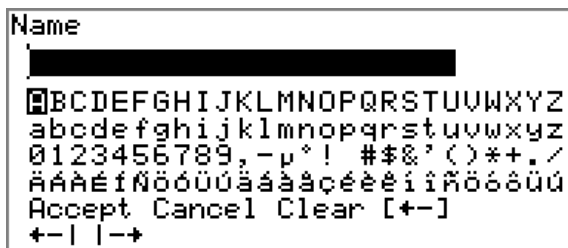
The selection bar is displayed in inverted style. Use the arrow keys [↑] and [↓] to move the selection bar upward or downward one line at a time. If a dialog text is marked with ">", then additional settings are available in a subordinate dialog. Use [OK] to access this dialog.

Example: System settings

```
System ready
>Settings
>Solutions
>File management
>External devices
>Diagnosis
```

Use the [BACK] key to return to the next higher level.

4.2.4 Entering text and numbers



In the editing dialog for text input or numerical input, select the individual characters with the arrow keys. Use **[OK]** to apply the character in the input field. The following functions are available:

Editing function	Description
Accept	The modification is applied and the editing dialog is exited.
Cancel	The editing dialog is exited without applying the modification.
Clear	The content of the input field is deleted completely.
[+–]	The character left of the cursor is deleted (back-space).
+– 	Text editor only The cursor within the input field is shifted to the left by one character each time that [OK] is pressed.
 –+	Text editor only The cursor within the input field is shifted to the right by one character each time that [OK] is pressed.
[BACK]	The modification is applied and the editing dialog is exited.

The **[BACK]** key has the same function as **Accept**.

A commercially available USB keyboard can be connected to make it easier to enter text and numbers. The assignment of the keys on the PC keyboard is described in *chapter 8.4.2, page 55*.

4.2.5 Selecting from a selection list



In a selection list, select the individual entries with the arrow keys [**↑**] and [**↓**]. Accept the selection with [**OK**] or [**BACK**].

4.3 Methods

4.3.1 Method templates

The 876 Dosimat plus contains method templates which are already configured and which can be adjusted to individual requirements.

The following method templates can be selected:

DOS Manual interactive dosing with optional calculating results.

For manual titrations.

XDOS Automatic dosing with freely selectable specifications.

The following specifications are possible:

- Volume and time
- Volume and dosing rate
- Dosing rate and time

You will find a detailed description of the methods in chapter .

4.3.2 Creating a new method

Proceed as follows to create a new method:

1 Open the method table

- In the main dialog, select **Method** and press [**OK**].

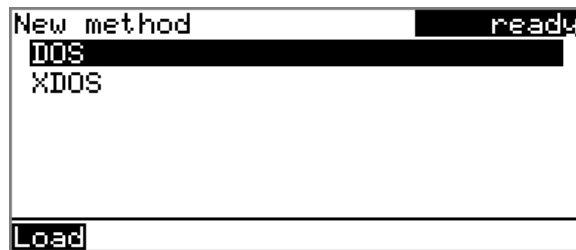
The method table opens:



2 Select the method template

- In the function bar, select **New** and press **[OK]**.

The list of method templates opens:



3 Load the method template

- Select the desired template and press **[OK]**.

The method template is now loaded and is displayed in the main dialog under **Method**.

If a new method has been created, then the individual parameters can be modified under **Menu ► Parameters**.

4.3.3 Saving a method

If you modify method parameters, then you can save these as your own method. A maximum of 100 methods can be saved.

To save a method, proceed as follows:

1 Opening the method table

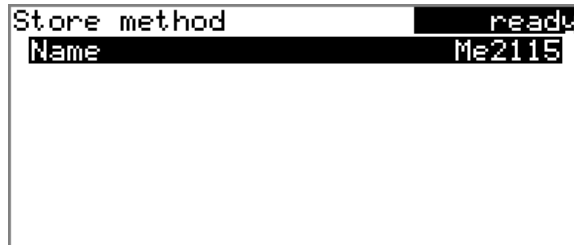
- In the main dialog, select **Method** and press **[OK]**.

The method table opens:



2 Modifying/applying the method name

- In the function bar, select **Store** and press **[OK]**.
A method name will be suggested for new methods. If the method has already been saved once, then the method name will be displayed:



Applying the name:

- Press **[BACK]**.

The method will be saved and the method table is displayed.

Entering a new name:

- Press **[OK]**.
The text editor opens.
- Enter a method name (max. 12 characters) and apply with **Accept** or **[BACK]**.
- Press **[BACK]**.

The method will be saved and the method table is displayed.

4.3.4 Loading a method

To load a method, proceed as follows:

1 Open the method table

- In the main dialog, select **Method** and press **[OK]**.

The method table with the stored methods opens:



2 Select a method

- Select the desired method.

3 Load the method

- In the function bar, select **Load** and press **[OK]**.

The method is now loaded and is displayed in the main dialog under **Method**.

4.3.5 Exporting a method

The methods can be exported to a connected USB flash drive.



NOTE

This function is possible only if a USB flash drive is connected as an external storage medium.

To export a method, proceed as follows:

1 Opening the method table

- In the main dialog, select **Method** and press **[OK]**.

The method table with the stored methods opens:



2 Selecting the method

- Select the desired method.

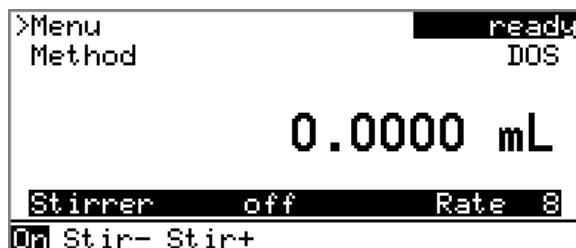
3 Exporting the method

- In the function bar, select **Export** and press **[OK]**.

The method is being exported. The directory structure on the USB flash drive is listed in *chapter 5.3, page 34*.

4.4 Stirrer operation

You can control a connected stirrer directly in the main dialog.



Proceed as follows:

1 Set the stirring rate

- Use the arrow key [↓] to select the **Stirrer** entry.
- In the function bar, select the **Stir-** or **Stir+** function.
The stirring rate will be increased or decreased by one step each time the **[OK]** key is pressed.
The algebraic sign changes the direction in which the stirring is done. When the stirrer is viewed from above, this means:
 - "+": counterclockwise rotation
 - "-": clockwise rotation

2 Switch on the stirrer

- In the function bar, select the **on** function and press **[OK]**.
The stirrer is started and stirs at the rate which has been set. **Off** is now displayed in the function bar.

3 Switch off the stirrer

- In the function bar, select the **off** function and confirm with **[OK]**.
The stirrer is stopped.

4.5 Entering sample data

Menu ► Sample data

In the dosing mode DOS, a sample size can be used for calculation.

The sample size can be entered using the keypad (in the main menu under **Sample data**) or transferred directly from a balance by means of a cable connection. When using direct data transfer from a balance, care must be taken to ensure that the settings for data transfer on the 876 Dosimat plus match those on the balance (*see page 36*).

ID1

Sample identification.

Entry	max. 10 characters
Default value	empty

ID2

Sample identification.

Entry	max. 10 characters
Default value	empty

Sample size

Sample size.

Input range	-999999999 - 999999999
Default value	1.0

Unit

Unit of the sample size.

Selection	g mg µg mL µL pieces User-defined
Default value	g

User-defined

A user-defined unit can be created. This will be added to the selection list. The previous entry will be overwritten as soon as the new unit has been defined.

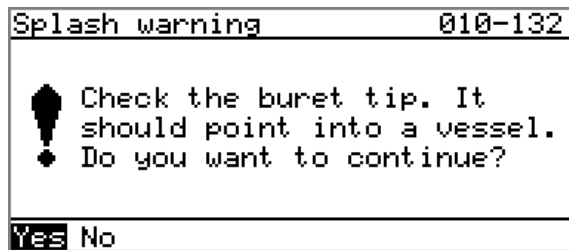
4.6 Preparing the buret unit (PREP)

The **PREP** function is used to rinse the cylinder and tubings of the buret unit and fill them air bubble-free. You should carry out this function once per day.

Proceed as follows:

- 1
 - In the main dialog, select **Menu** and press **[OK]**.
The main menu opens.
 - Select the menu item **Prepare buret unit** and press **[OK]**.
If an 805 Dosimat for tandem dosing is connected to the instrument, select the first or second Dosimat afterwards.

The following message is displayed:



2 Start the preparing



CAUTION

Make sure that the buret tip is directed into a vessel that can accommodate the cylinder volume of your buret unit several times over.

- Select **Yes** and confirm the message with **[OK]**.

Preparing is carried out.

4.7 Printing a report manually

Menu ► Print reports

Proceed as follows to print a report manually:

1 Opening the main menu

- In the main dialog, select **Menu** and press **[OK]**.

```
Menu ready
>Parameters
>Sample data
>System
>Print reports
>Prepare buret unit
```

2 Opening the print dialog

- Select the menu item **Print reports** and press **[OK]**.

The dialog window with the available reports opens:

```
Print reports ready
Results
Parameters
System
PC/LIMS
```

3 Selecting the report

- Select the desired report and press **[OK]**.

The report is printed out.

The following reports can be printed out manually:

Results	Result report with determination properties, sample data, calculated results, etc.
Parameters	Report with all method parameters of the loaded method.
System	System report with system settings, solution list, external devices, etc.



PC/LIMS

Machine-readable report with all of the data for a determination. This report can be saved as a TXT file to a connected USB flash drive or sent to a terminal program or a LIMS via an RS-232 interface. The definition is made in the system settings (see "*PC/LIMS report*", page 35).

5 System settings

5.1 Basic settings

Menu ► System ► Settings

This chapter contains a description of general instrument settings.

User name

A user name can be entered here for the report. This parameter will only be printed if a user has been defined.

Entry	max. 12 characters
Default value	empty

Instrument name

A instrument name can be entered here for the report. This parameter will only be printed if a designation has been defined.

Entry	max. 10 characters
Default value	empty

Serial number

Serial number of the instrument. This is printed as a part of the instrument identification in the report header.

Program version

Version number of the instrument software. This is printed as a part of the instrument identification in the report header.

Time

Current time. Only valid numbers can be entered.

Format: hh:mm:ss

Date

Current date. Only valid numbers can be entered.

Format: YYYY:MM:DD

Language

Setting the dialog language. An additional language can be selected besides English.

**NOTE**

In order to ensure that a second language can be selected, it must first be installed. This installation must be carried out by specialist personnel. In chapter *Language files, page 38*, you will find details regarding the installation of a second language.

Dialog type

The user dialog can be limited for routine operations. One can operate normally with methods in the limited dialog. However, no settings can be made or methods deleted.

The resetting of the dialog will take effect as soon as you exit the main menu.

The limitation of the dialog results in the following:

- The menu items **System** and **Parameters** are not shown in the main menu.
- Methods can only be loaded, but not deleted, exported or created.

**NOTE**

If the limited dialog for routine operation is activated, then the expert dialog cannot be activated during ongoing operation. To change the dialog type, the 876 Dosimat plus must be switched off and then back on again. The expert dialog can be forced as soon as the instrument is started up again. Then it is possible to enter whatever settings one wishes, e.g. the changing of the dialog type. If the instrument is switched off again without changing the dialog type, then the routine dialog will remain activated.

Forcing the expert dialog:

- Switch on the instrument.
- Wait for the display of the instrument logo with the lettering **easy, safe, precise**.
- Press the **[STOP]** key once again and hold it down while also briefly pressing the **[BACK]** key.
- Release both keys once again.

Selection	Expert Routine
Default value	Expert

Expert

Complete dialog.

Routine

Limited dialog for routine operations.

Contrast

The contrast of the display can be adjusted with the arrow keys [**←**] and [**→**].

- [**←**]: the contrast will be decreased by one step each time the key is pressed.
- [**→**]: the contrast will be increased by one step each time the key is pressed.

Input range	150 - 240
Default value	212

**NOTE**

Alternatively, the contrast can also be modified in the following manner:

Keep the red [**STOP**] key pressed down. As soon as the progress bar appears, also press the arrow key [**↓**] or [**↑**] repeatedly.

This method will, however, cause the contrast to be modified by several steps.

Beep

If this parameter is activated, then a short beep will sound in the following cases:

- When a key is pressed.
- At the end of the determination.

Selection	on off
Default value	on

PREP warning

If this parameter is activated, then the recommendation will be made to carry out the function **PREP** (Preparing):

- After the instrument is switched on.
- Each time a buret unit is attached.

All tubing and the cylinder are rinsed with this function (*see Chapter 8.1.2, page 52*).

Selection	on off
Default value	on

5.2 Managing solutions

5.2.1 General

Menu ► System ► Solutions

Solutions can be used in intelligent buret units or in non-intelligent buret units. Intelligent buret units have a built-in data chip on which the data for the reagent is stored. This data is automatically read out during attachment and entered in the solution list.

Solution list	ready
Reagent 1	*IEU
Reagent 2	EU

Edit New Delete

The name and the type are specified for each solution in the solution list. The asterisk (*) on the right-hand side indicates that this buret unit is attached (only for intelligent buret units). An unlimited number of solutions in buret units with data chip can be added to the solution list. The number of solutions in buret units without data chip is limited to 10 items.

Meaning of the type:

- **EU**: exchange unit without data chip
- **IEU**: exchange unit with integrated data chip

Edit

Edit the data of the selected solution, see following chapter.

New

Add a new solution to the list, see following chapter.

Delete

Delete the selected solution from the list.

5.2.2 Editing the solution data

Name

The designation of the solution is used for unambiguous identification.

Entry	max. 24 characters
Default value	empty

Type

The model of the buret unit is displayed.

Cylinder volume

Cylinder volume of the buret unit in mL. The cylinder volume is automatically read out with intelligent buret units.

Selection	1 5 10 20 50
Default value	20

Concentration

Concentration of the solution.

Input range	-999999999 - 9999999999
Default value	1.000

Concentration unit

Unit of the concentration.

Selection	μmol/mL mmol/L mol/L g/L mg/L mg/mL μg/L ppm % mEq/L User-defined
Default value	mol/L

User-defined

A user-defined unit can be created. This will be added to the selection list. The previous entry will be overwritten as soon as the new unit has been defined. A blank entry can be generated this way as well.

Titer

Titer of the solution.

Input range	-999999999 - 9999999999
Default value	1.000

Titer unit

Unit of the titer.

Selection	μmol/mL mmol/L mol/L g/L mg/L mg/mL μg/L ppm % mEq/L empty User-defined
Default value	empty

User-defined

A user-defined unit can be created. This will be added to the selection list. The previous entry will be overwritten as soon as the new unit has been defined. A blank entry can be generated this way as well.

Date titer det.

Date of the last titer determination.

Monitoring

Activating and deactivating the titer monitoring.

Selection	on off
Default value	off

Time interval

This parameter is visible only when **Monitoring = on**.

You will be notified that this time interval (in days) has elapsed when starting a method. You can then select whether or not you would still like to start the method.

Input range	1 - 999 d
Default value	999 d

5.3 File management

Menu ► System ► File management



NOTE

This menu item is visible only if a USB flash drive has been connected as an external storage medium.

Methods can be imported and deleted from a USB flash drive in this dialog. Only methods located in the **Files** directory are displayed in the list (see *"Directory structure on the USB flash drive", page 35*).

A backup of the system can be created (all data and settings). Similarly, an existing backup can be reloaded.

Import

Import the selected method.

Delete

Delete the selected method.

Backup

Create a backup of all data and settings on the USB flash drive.



NOTE

Only **one** backup can be created on the same USB flash drive.

If a backup is already stored on the flash drive, then this will be overwritten as soon as the function is performed once again.

Restore

Load the backup from a connected USB flash drive.

Directory structure on the USB flash drive

A directory with the instrument number will be created on the USB flash drive. The structure within this directory appears as follows:



Figure 16 Directory structure on the USB flash drive

Backup All of the files of the backup are stored in this directory. The directory is created as soon as a backup is created for the first time.

Files Exported methods are stored in this directory. The directory is created as soon as a backup is exported for the first time.

Only methods located in this directory can be imported.

5.4 Configuring external devices

Menu ► System ► External devices

PC/LIMS report

Specification of the storage location for the PC/LIMS report. The PC/LIMS report is a machine-readable report with all of the important data for a determination. It can be saved as follows:

- as a TXT file on a USB flash drive.
- to a LIMS via an RS-232 interface. The 6.2148.030 RS-232/USB Box is required for this purpose.

Selection	COM2 USB Stick
Default value	USB Stick

COM2

The report is sent via the serial COM2 interface. The interface parameters set in the dialog **COM2 settings** are used (see "Editing the COM2 settings", page 37).

USB Stick

The report will be saved as a TXT file on the USB flash drive in the folder **pc_lims_report**.

Printer

If a printer is connected, then the printer type needs to be defined here in order for the reports to be printed out correctly.



The printers that have the designation **ESC-POS** are so-called POS printers (point-of-sale printers), i.e. they print on continuous paper.

Selection	Citizen (ESC-POS) Custom (ESC-POS) Epson Epson (ESC-POS) HP DeskJet HP LaserJet Seiko (ESC-POS)
Default value	HP DeskJet

Keyboard layout

A commercially available USB keyboard can be connected to make it easier to enter text and numbers. Specify the country-specific keyboard layout.

Selection	English US French FR German CH German DE Spanish ES
Default value	English US

Balance

If you have connected a balance, then you must define the balance type here.

Selection	AND Mettler Mettler AT Mettler AX Ohaus Precisa Sartorius Shimadzu
Default value	Sartorius

The following table indicates the balance type that needs to be selected for the balance model:

Balance	Balance type
AND	AND
Mettler AB, AE, AG, AM, AJ, PE, PM, PJ, PR, XP, XS	Mettler
Mettler AT	Mettler AT
Mettler AX, MX, UMX, PG, AB-S, PB-S	Mettler AX
Ohaus Voyager, Explorer, Analytical Plus	Ohaus
Precisa	Precisa
Sartorius	Sartorius
Shimadzu BX, BW	Shimadzu

Editing the COM1 settings

Menu ► System ► External devices ► COM1 settings

The interface parameters for the connected balance are set under **COM1 settings**.

Baud rate

Transfer rate in characters per second.

Selection	1200 2400 4800 9600 19200 38400 57600 115200
Default value	9600

Data bits

Number of data bits.

Selection	7 8
Default value	8

Stop bits

Number of stop bits.

Selection	1 2
Default value	1

Parity

Type of parity testing.

Selection	even none odd
Default value	none

Handshake

Type of the data transfer protocol.

Selection	hardware software none
Default value	hardware



NOTE

If communications problems occur, set the parameter **Handshake** to **software**, and make another attempt.

Editing the COM2 settings

Menu ► System ► External devices ► COM2 settings

The interface parameters for instruments connected to the **RS-232/2** connector of the RS-232/USB Box (e.g. PC) are set under **COM2 settings**. The parameters and input ranges are identical to those for the COM1 interface.

5.5 Instrument diagnosis

5.5.1 Loading program versions and language files

Menu ► System ► Diagnosis

New program versions or language files can be loaded from a USB flash drive. The corresponding file must be saved on the USB flash drive in a directory with the instrument number (e.g. 848 or 863).

You can distinguish between language files and program files by noting how the file name is constructed.

Program files

They are instrument-specific. The file name has the following structure:

5XXXyyyy.bin where

XXX = Instrument type (e.g. 848 for the 848 Titrino plus)

yyyy = Program version

Language files

They can be recognized by means of the two-digit language code in the file name. A language file contains the dialog texts for various instrument types. It is not instrument-specific. The file name has the following structure:

5848xxxxYY.bin where

xxxx = Version number

YY = Language, e.g. DE (German), FR (French), ES (Spanish)

Loading a file

Proceed as follows:

1 Connecting the USB flash drive

- Plug in the USB flash drive with the 6.2151.100 adapter (USB MINI (OTG) - USB A) at the instrument's USB port.
- Switch on the instrument.

2 Opening the update dialog

- Under **Menu ► System ► Diagnosis**, select the menu item **Software update**.
- Press **[OK]**.

```
Software update ready
Program version 58480011

Press [START] key to continue
```

3 Opening the file selection

- Press **[OK]**.

The selection list with the program and language files present on the USB flash drive opens.

4 Selecting the file

- Use the arrow keys to select the required file.
- Press **[OK]**.

5 Starting the update

- Press **[START]**.

The update process is started, it runs automatically. At the end of the process, the instrument will be switched off automatically and switched back on again. No user intervention is required.

5.5.2 Diagnosis functions

Electronic and mechanical functional groups in Metrohm instruments can and should be checked as part of regular maintenance by specialist personnel from Metrohm. Please ask your local Metrohm representative regarding the precise terms and conditions involved in concluding a corresponding maintenance agreement.

6 Parameters and dosing modes

6.1 Manual dosing (DOS)

6.1.1 General description

Use

The dosing mode **DOS** is particularly suited for carrying out manual titrations with an indicator. A result can be calculated and a result report can be printed automatically from the dosed volume. Various variables of the calculation can be defined as parameters in advance. The parameters in their entirety can be saved as methods and then used if needed. We recommend creating various methods based on the type of titration or sample.

Solutions and buret units

For dosing, buret units with or without integrated data chip can be used. The solution data (e.g. the concentration and the titer) is managed by the 876 Dosimat plus and can be used for the result calculation. This requires the solution name to be specified under **Menu ► Parameters**.

Entering sample data

The sample data Sample size and Unit can be entered before and during a determination in **Menu ► Sample data**.

If a balance is connected, a sample size and unit can be taken directly from the balance before or during the determination. Usually, this is done by pressing the **[Print]** key on the balance. Note that this requires that the configuration of the balance's data transmission matches the settings in the 876 Dosimat plus, see (see page 36). Details on configuring and sending the sample size can be found in the operating instructions of your balance.

Performing a determination

Dosing is carried out in steps in dosing mode **DOS** by pressing the **[GO]** key on the device or on the dosing handle. The parameter **Dosing ramp** can be used to define whether dosing is to be carried out with uniform dosing rates or whether a dosing step is to begin with a slowly increasing dosing rate. The **Volume** parameter allows you define a fixed volume per dosing step.



At the end of a determination, you can use the **[FILL]** key to re-fill the dosing cylinder. This automatically calculates the result and prints a result

report if the corresponding settings have been carried out, see the following Chapter.



The result of the calculation is shown under the volume display. The result and the dosing volume can be deleted by pressing the **[FILL]** key once more.

6.1.2 Selecting a solution

Menu ► Parameters

Solution

Selection of the solution from the solution list. We recommend always selecting the solution. Solutions are defined under **System ► Solutions**.

For exchange units with integrated data chip, a check is made in the method run to verify whether the correct solution has been attached. For exchange units without integrated data chip, only the cylinder volume is checked. The validity of the titer is checked for the selected solution at the start of the determination.

Selection	Selection of configured solutions not defined
Default value	not defined

not defined

No check takes place.

6.1.3 Dosing parameters

Menu ► Parameters ► Dosing parameters

Dosing rate

The rate at which dosing takes place. The maximum dosing rate depends on the cylinder volume (*see Chapter 8.1.1, page 52*).

Input range	0.01 - 150.00 mL/min
Selection	max.
Default value	max.

Filling rate

Rate at which the dosing cylinder is to be refilled. The maximum filling rate depends on the cylinder volume (*see Chapter 8.1.1, page 52*).

Input range	0.01 - 150.00 mL/min
Selection	max.
Default value	max.

Mode

Method of dosing.

Calculation formula

$$\frac{(Volume - Blank) \times Titer \times Conc. \times Factor}{Sample\ size \times Divisor}$$

where:

<i>Volume</i>	Dosed volume
<i>Blank</i>	Blank value
<i>Titer</i>	Titer of the solution used
<i>Conc.</i>	Concentration of the solution used
<i>Factor</i>	Factor
<i>Sample size</i>	Sample size. The sample size and associated unit can be specified under Menu ► Sample data . If a balance is connected, the sample size (with unit) can also be applied directly from the balance.
<i>Divisor</i>	Divisor

**NOTE**

If a solution is selected in **Parameters**, the corresponding titer and the concentration from the solution data in **System ► Solutions** is read out and used for the calculation. If this is not the case, **Default value 1** is used for the calculation.

Calculation status

Activating the calculation.

Selection	on off
Default value	off

on

The settings for the calculation can be entered as soon as the calculation has been activated.

Result name

The result name will be shown in the result view and in the report.

Entry	12 characters
-------	----------------------

Decimal places

Number of decimal places used to display the result.

Input range	0 - 5
Default value	2



Result unit

The result unit is displayed and saved along with the result.

Proceed as follows if you wish to delete a selected unit:

Delete the unit entered under **User-defined**. A blank entry will be generated in the selection list.

Selection	% /pc L g g/L mL mg mg/mL mol mol/L ppm User-defined
Default value	%

User-defined

A user-defined unit can be created. This will be added to the selection list. The previous entry will be overwritten as soon as the new unit has been defined.

Factor

Factor for the calculation formula.

Entry	10 digits
Default value	1.0

Divisor

Divisor for the calculation formula.

Entry	10 digits
Default value	1.0

Blank

The blank value is subtracted from the dosing volume.

Input range	0.0000 - 1,000,000 mL
Default value	0.0000 mL

6.1.5 Reports

Menu ► Parameters ► Reports

The reports that will be printed out automatically in connection with a determination are defined under **Reports**.

Results

The result report contains the calculated result and additional specifications.

Selection	off on
Default value	off

PC/LIMS

The PC/LIMS report is a machine-readable report with all of the data important for a determination. The PC/LIMS report can be saved as a TXT file on a USB storage medium or sent via an RS-232 interface to a LIMS. The output location is defined in the system settings (see "PC/LIMS report", page 35).

The file name of the TXT file is constructed as follows: *PC_LIMS_Report-ID1-YYYYMMDD-hhmmss.txt*.

Selection	on off
Default value	off

6.1.6 Pulse control

Menu ► Parameters ► Pulse control

Pulse control

Activates/deactivates the pulse control. For details about the pulse control, see *chapter Pulse control, page 60*.

Selection	off on
Default value	off

on

If the pulse control is activated, dosing is controlled via the remote interface. The **[GO]** key starts the pulse control and is deactivated afterwards.

Autostart at power-on

If this setting is activated, the pulse control is activated upon switching on the device or loading the method. Thus, it is not required to start the corresponding method manually.

Selection	off on
Default value	off

Reset volume

If this setting is activated, the volume display is reset to 0.0000 mL after filling the dosing cylinder. This setting does not apply to automatic intermediate filling.

Selection	off on
Default value	off

6.2 Extended dosing (XDOS)

6.2.1 General description

Usage

The **XDOS** dosing mode can be used for a variety of purposes.

Fixed volume dosing The volume and the dosing rate are specified.

Time-controlled dosing The volume and the time are specified.

Dosing according to dosing rate The dosing rate and the time are specified.

If continuous dosing without interruption is required, then the 876 Dosimat plus can be operated together with an 805 Dosimat in tandem mode.

The parameters as a whole can be saved as a method and then later used where required.

Solutions and buret units

Buret units with or without an integrated data chip can be used for dosing. The solution data, such as the concentration and the titer of the solution, are managed by the 876 Dosimat plus and are documented at the time of the output of the report. This requires that the name of the solution be specified under **Menu ► Parameters**.

Performing a dosing



Pressing the **[GO]** key causes the dosing to run automatically. Three dosing criteria are applied for this process. The specified dosing criteria are observed in all cases. The dosing criterion that is not defined in a specific case (volume, time or dosing rate) is calculated by the instrument and shown on the display. The dosing is optimized according to the specifications. Continuous dosing is ensured in tandem operation, if the dosing and filling rates have been set accordingly.



The dosing can be canceled with the **[FILL]** key. If the **Auto fill** parameter is switched on, then the dosing cylinder will be filled.

The dosing criteria are shown on the display. They can be deleted by pressing the **[FILL]** key once again.

6.2.2 Selecting a solution

Menu ► Parameters

Solution

Selection of the solution from the solution list. We recommend always selecting the solution. Solutions are defined under **System ► Solutions**.

For exchange units with integrated data chip, a check is made in the method run to verify whether the correct solution has been attached. For exchange units without integrated data chip, only the cylinder volume is checked. The validity of the titer is checked for the selected solution at the start of the determination.

Selection	Selection of configured solutions not defined
Default value	not defined

not defined

No check takes place.

6.2.3 Selecting the operating mode

Menu ► Parameters

Buret setup

If continuous dosing without interruption is required, then the tandem mode can be selected. An additional 805 Dosimat is required for this purpose.

Selection	Single Tandem
Default value	Single

Single

Dosing with one instrument.

Tandem

Dosing with two Dosimats.

Tandem operation

An 805 Dosimat is connected to the MSB connector of the 876 Dosimat plus for tandem operation.



NOTE

Two exchange units with the same cylinder size must be used for tandem operation.

The principle of tandem dosing:

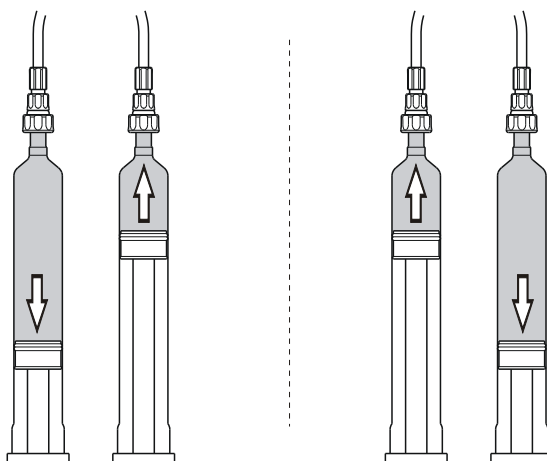


Figure 18 Tandem operation

The two Dosimats operate alternately during dosing. If the dosing cylinder of one Dosimat needs to be filled, then the second Dosimat will take over the control of the dosing. The same dosing and filling speeds apply respectively for both Dosimats.

Because it takes the flat stopcock approximately 2 seconds to switch over, the filling rate must be greater than the dosing rate. Continuous dosing cannot be ensured otherwise.



NOTE

Maximum applicable dosing rate = 0.85 x filling rate

6.2.4 Dosing parameters

Menu ► Parameters ► Dosing parameters

Dosing criteria

Selection of the preset dosing criteria.

Selection	Rate/Time Volume/Rate Volume/Time
Default value	Volume/Rate

Rate/Time

Dosing is carried out at the selected dosing rate for the amount of time specified. The time is also running while the cylinder is being filled.

Volume/Rate

The volume specified is dosed at the selected dosing rate.

Volume/Time

The volume specified is dosed for the time period selected. The dosing rate necessary for this, is calculated according to these specifications. The time needed for filling the dosing cylinder and for switching over the flat stopcock is taken into account thereby.

Volume

The volume to be dosed.

Input range	0.0000 - 99999.9 mL
Default value	10.0000 mL

Dosing rate

The rate at which dosing takes place. The maximum dosing rate depends on the cylinder volume (see Chapter 8.1.1, page 52).

Input range	0.01 - 150.00 mL/min
Selection	max.
Default value	max.

Filling rate

Rate at which the dosing cylinder is to be refilled. The maximum filling rate depends on the cylinder volume (see Chapter 8.1.1, page 52).

Input range	0.01 - 150.00 mL/min
Selection	max.
Default value	max.

Volume limit

Safety limit for limiting the maximum volume to be dosed.

Input range	0.01 - 99999.9 mL
Selection	off
Default value	off

off

No safety limit.

Auto fill

Automatic filling of the cylinder after the dosing.

Selection	off on
Default value	on

6.2.5 Reports**Menu ► Parameters ► Reports**

The reports that will be printed out automatically in connection with a determination are defined under **Reports**.

Results

The result report contains the calculated result and additional specifications.



Selection	off on
Default value	off

PC/LIMS

The PC/LIMS report is a machine-readable report with all of the data important for a determination. The PC/LIMS report can be saved as a TXT file on a USB storage medium or sent via an RS-232 interface to a LIMS. The output location is defined in the system settings (*see "PC/LIMS report", page 35*).

The file name of the TXT file is constructed as follows: *PC_LIMS_Report-ID1-YYYYMMDD-hhmmss.txt*.

Selection	on off
Default value	off

7 Operation and maintenance

7.1 General

The 876 Dosimat plus requires appropriate care. Excess contamination of the instrument may result in functional disruptions and a reduction in the service life of the sturdy mechanics and electronics of the instrument.

Severe contamination can also have an influence on the measured results. Regular cleaning of exposed parts can prevent this to a large extent.

Spilled chemicals and solvents must be removed immediately. In particular, the plug connections (particularly the power plug) have to be protected from contamination.

Check all tubing connections regularly for leaks.

7.2 Quality management and qualification with Metrohm

Quality management

Metrohm offers you comprehensive support in implementing quality management measures for instruments and software.

Qualification

Please contact your local Metrohm representative for support in qualification of instruments and software. The **Installation Qualification** (IQ) and **Operational Qualification** (OQ) are offered by Metrohm representatives as a service. They are carried out by trained employees using standardized qualification documents and in accordance with the currently applicable requirements of the regulated industry.

Maintenance

The electronic and mechanical functional groups of Metrohm instruments can and should be checked by specialist personnel from Metrohm as part of a regular preventive maintenance schedule. Please ask your local Metrohm representative regarding the precise terms and conditions involved in concluding a corresponding maintenance agreement.

For detailed information on this topic, please visit www.metrohm.com.



8 Appendix

8.1 Exchange unit

8.1.1 Maximum dosing and filling rate

The maximum dosing rate and maximum filling rate for the exchange unit depend on the cylinder volume:

Cylinder volume	Maximum rate
1 mL	3.00 mL/min
5 mL	15.00 mL/min
10 mL	30.00 mL/min
20 mL	60.00 mL/min
50 mL	150.00 mL/min

Independent of the cylinder volume, values ranging from 0.01 to 150.00 mL/min can always be entered. When the function is carried out the rate will be, if necessary, decreased automatically to the highest possible value.

8.1.2 Parameters for the preparing (PREP)

The **PREP** function (Preparing) is used to rinse the cylinder and tubings of the exchange unit and fill them air bubble-free. You should carry out this function before the first determination or once per day.

Preparing is carried out with the following, non-alterable settings:

- The entire cylinder volume is dosed twice with the maximum dosing rate.

8.2 Stirring rate

The stirring rate can be adjusted in steps of -15 to $+15$.

The approximate rotational speed can be calculated with the following formula:

$$\text{Rotational speed/min (r/min)} = 125 \cdot \text{stirring rate}$$

Example:

Stirring rate set: 8

Rotational speed in rpm = $125 \cdot 8 = 1000$

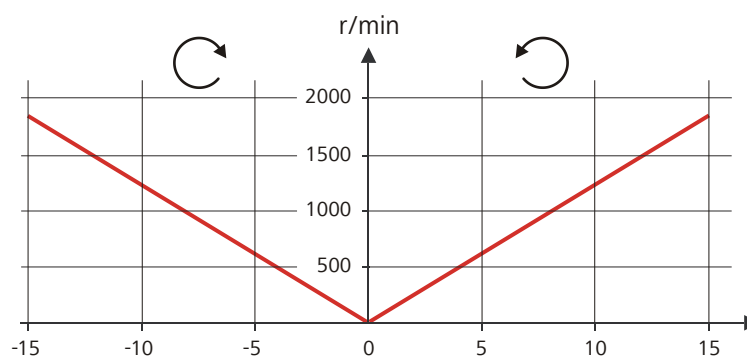


Figure 19 Rotational speed depending on stirring rate

8.3 Balance

The sample size and the associated unit can be sent from a connected balance. The sample size is transmitted as a number with up to ten characters (including algebraic sign and decimal point).

Sample size and unit are sent as a single character string. They are separated by a space character. The string is terminated with the ASCII characters **CR** and **LF**.

If the balance sends a negative sample size (e.g. when you are reweighing a sample), then the algebraic sign is adopted. The algebraic sign is, however, ignored for the calculations.



NOTE

With some balances, the sample identification and the method can be sent in addition to the sample size.

Make sure that the balance does not send the sample size until the end.

8.4.2 Key assignment of a USB keyboard

A commercially available USB keyboard can be connected to make it easier to enter text and numbers.

The respective editing dialog must be opened for the text input and numerical input.

Table 2 Key assignment

Key of the 876 Dosimat plus or function in the editing dialog	Key on the USB keyboard
[BACK]	[Esc]
[↑] [↓]	[↑] [↓]
[←] [→]	[←] [→]
[OK]	[↵] (enter key) or [Enter] on the numerical keypad
[STOP]	[Ctrl] + [S]
[START]	[Ctrl] + [G]
[+-]	[←] (backspace)
Clear	[Delete]
Cancel	[Ctrl] + [Q]
Accept	[Esc]



NOTE

The lettering of the USB keyboard may differ from above lettering, depending on the country-specific keyboard used.

8.4.3 Printer

The range of USB printers available is extremely varied and constantly changing. The following points must be taken into account when selecting a printer:

- USB interface necessary
- Printer language: HP-PCL, Canon BJI Commands, Epson ESC P/2 or ESC/POS

**NOTE**

Inexpensive printers are often designed solely for use with a PC and may not be equipped with one of the printer languages listed above. Such models are not suitable for this reason.

8.5 System initialization

In very rare instances, a faulty file system (e.g. because of a program crash) may lead to an impairment of program functioning. The internal file system must be initialized in such cases.

**CAUTION**

All user data (methods, solutions, etc.) are deleted if a system initialization is carried out. Afterwards, the instrument will have the factory settings again.

We recommend creating a backup of the system at regular intervals in order to avoid data losses.

After a system initialization the program versions and language files do not have to be reloaded. Only the selection of the dialog language may have to be reset in the system settings.

Proceed as follows for the system initialization:

1 Switching off the instrument

- Keep the red **[FILL]** key pressed down for at least 3 s.

A progress bar is displayed. If the key is released during this time, then the instrument will not be switched off.

2 Switching on the instrument

- Keep the red **[FILL]** key pressed down for approx. 10 s.

The dialog for confirmation of the initialization is displayed for 8 s. The initialization must be confirmed during this time.


```

System reset request detected.
>> Press [BACK] key twice
to confirm !
>> Time remaining: 8 sec

```

3 Confirming the initialization



NOTE

If the request is not confirmed within 8 s, then the procedure will be canceled.

- Press **[BACK]** twice.

Initialization is started. The process takes approximately 80 s. The instrument will be automatically restarted after successful initialization.

8.6 Remote interface

8.6.1 Pin assignment of the remote interface

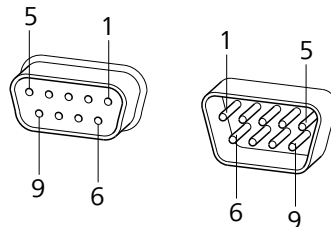


Figure 20 Pin assignment of remote socket and remote plug

The above figure of the pin assignment applies for all Metrohm instruments with 9-pin D-Sub remote connector.

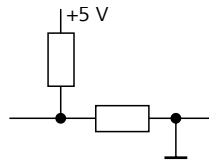
Table 3 Inputs and outputs of the remote interface

Pin No.	Assignment	Function
1	Output 0	Ready/EOD
2	Output 1	-
3	Output 2	-
4	Output 3	Pulse
5	Output 4	Error



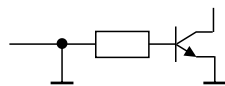
Pin No.	Assignment	Function
6	0 volt (GND)	
7	+5 volts	
8	Input 0	Start/Go
9	Input 1	Stop/Fill

Inputs



approx. 5 kΩ Pull-up
 $t_p > 100 \text{ ms}$
 active = low, inactive = high

Outputs



Open Collector
 $t_p > 200 \text{ ms}$
 active = low, inactive = high
 $I_C = 20 \text{ mA}$, $V_{CE0} = 40 \text{ V}$
 +5 V: maximum load = 20 mA

8.6.2 Status diagram of the remote interface

Dosing mode DOS

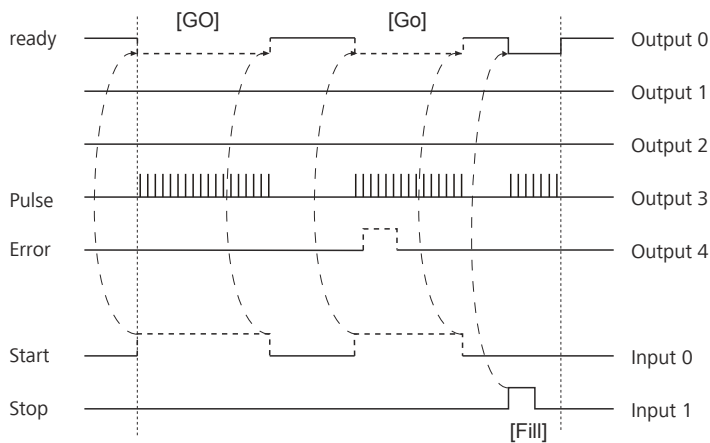


Figure 21 Remote status diagram DOS

Dosing mode DOS with pulse control

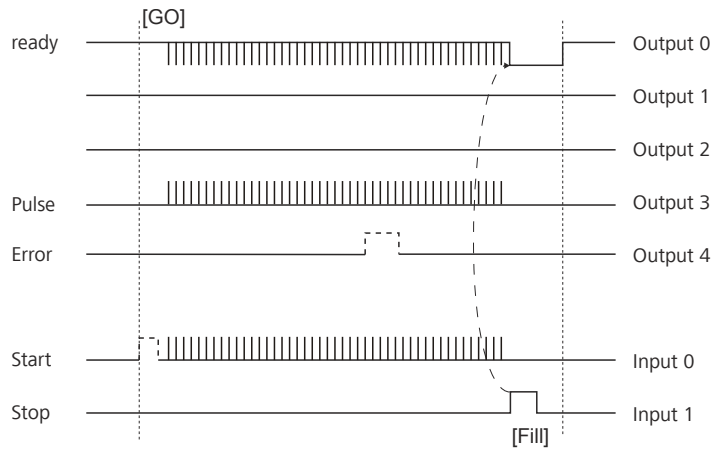


Figure 22 Remote status diagram DOS with pulse control

Dosing mode XDOS

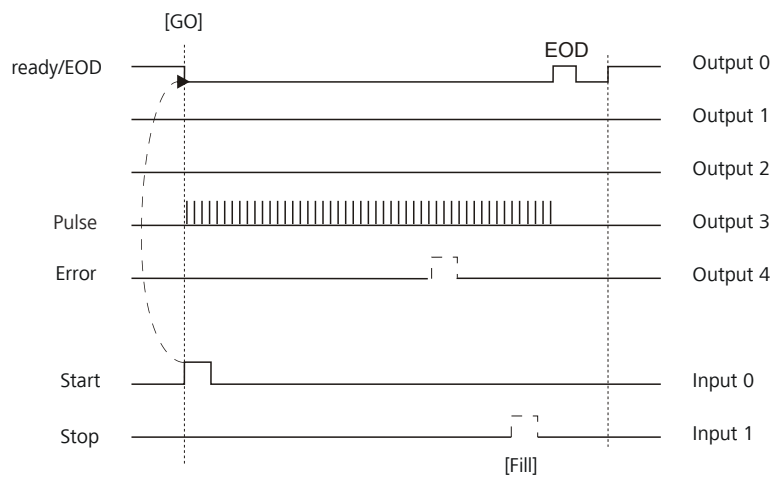


Figure 23 Remote status diagram XDOS

EOD = End of Determination

During a method run, modifying certain parameters is possible as it is in manual dosing.

The instrument shows the **"Hold" status** during pulse control.

Deactivated parameters

Parameters which directly affect the dosing are inactive during pulse control operation. This includes:

- Dosing rate
- Dosing ramp

8.8 Remote control via an RS-232 connection

The 876 Dosimat plus can be remote controlled via an RS-232 connection. For this, a **6.2148.030 RS-232/USB Box** is necessary. Connect the RS-232/USB Box to the USB interface of the instrument.

The RS-232/USB Box has two connectors for RS-232 instruments. The RS-232 remote control functions only through the connector **RS-232/2**. The connector RS-232/1 is designed for connection with a balance. Connect the **RS-232/2** connector of the RS-232/USB Box to a serial interface (COM interface marked with the symbol **IOIOI**) of a PC. Use a **6.2134.040 connection cable**.

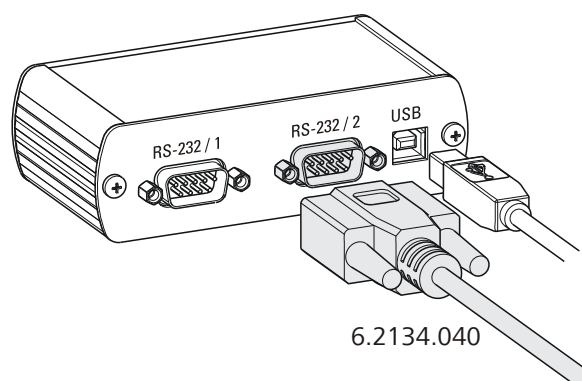


Figure 24 Connecting the RS-232/USB Box to the PC

Interface parameters

We recommend the following parameters for the RS-232 interface **COM2**:

- Baud rate: **19200**
- Data bits: **8**
- Stop bits: **1**
- Parity: **none**
- Handshake: **software**

Command	Function	Comment
\$Q(variable)	Request variable value	List of variables, see below.

Variable	Comment
VOLUME	Dosed volume
TITER	Titer of selected solution
CONC	Concentration of selected solution
C00	Sample size (DOS only)
RESULT	Result (DOS only)
RATE	Dosing rate (XDOS only)
TIME	Dosing time (XDOS only)

The values of the variables are only available after the end of a determination (in the status 'ready').

Acknowledgement of the instrument	Comment
OK	Command executed
E1	Method not found
E2	Invalid variable
E3	Invalid command



9 Technical specifications

9.1 Dosing drive

Resolution 10,000 steps per cylinder volume

Exchange unit

- Cylinder volume*
- 1 mL
 - 5 mL
 - 10 mL
 - 20 mL
 - 50 mL

Accuracy Fulfills ISO/DIN standard 8655-3

9.2 Interfaces

USB (OTG) connector For connecting USB devices.

MSB connector For connecting a stirrer or an 805 Dosimat.

Remote connector For connecting instruments with a remote interface.

9.3 Power connection

Supply voltage 100 - 240 V ($\pm 10\%$)

Frequency 50 - 60 Hz

Power consumption 45 W

Fuse 2 × 2.0 ATH, electronic overload protection

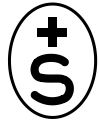
9.4 Safety specifications



This instrument fulfills the following electrical safety requirements:

CE marking in accordance with the EU directives:

- 2006/95/EC (Low Voltage Directive, LVD)
- 2004/108/EC (EMC Directive, EMC)



Federal Inspectorate for Heavy Current Installations ESTI (Accreditation Number SCESp 033)

- Safety mark for certification type 2 in accordance with NEV (type testing with market monitoring, EMC conformity)



ETL Listed Mark:

- Control number 3144965
- UL 61010-1
- CSA-C22.2 No. 61010-1

Intertek

Design and testing

According to EN/IEC/UL 61010-1, CSA-C22.2 No. 61010-1, protection class I, EN/IEC 60529, degree of protection IP40.

Safety instructions

This document contains safety instructions which have to be followed by the user in order to ensure safe operation of the instrument.

9.5 Electromagnetic compatibility (EMC)

Emission

Standards fulfilled

- EN/IEC 61326-1
- EN/IEC 61000-6-3
- EN 55022 / CISPR 22

Immunity

Standards fulfilled

- EN/IEC 61326-1
- EN/IEC 61000-6-2
- EN/IEC 61000-4-2
- EN/IEC 61000-4-3
- EN/IEC 61000-4-4
- EN/IEC 61000-4-5
- EN/IEC 61000-4-6
- EN/IEC 61000-4-11
- EN/IEC 61000-4-14



9.6 Ambient temperature

<i>Nominal function range</i>	+5 - +45 °C (at a maximum of 85% humidity)
<i>Storage</i>	-20 - +60 °C
<i>Transport</i>	-40 - +60 °C

9.7 Reference conditions

<i>Ambient temperature</i>	+25 °C (± 3 °C)
<i>Relative humidity</i>	$\leq 60\%$
<i>Operating temperature status</i>	Instrument in operation at least 30 min
<i>Validity of the data</i>	After adjustment

9.8 Dimensions

<i>Material of housing</i>	Poly(butylene terephthalate) (PBT)
<i>Material of display cover</i>	Glass
<i>Width</i>	142 mm
<i>Height</i>	164 mm
<i>Depth</i>	310 mm
<i>Weight</i>	2,850 g

10 Accessories

Up-to-date information on the scope of delivery and optional accessories for your instrument can be found on the Internet.





NOTE

When you receive your new instrument, we recommend downloading the accessories list from the Internet, printing it out and keeping it together with the manual for reference purposes.

Instruments currently sold

If you do not know the article number of your instrument, proceed as follows:

Downloading the accessories list

- 1 Go to the Metrohm website <http://www.metrohm.com/com>.
- 2 Click on .
The **Search** webpage will be displayed.
- 3 Enter a search term relating to the instrument into the search field and click on **Find**.
The search results will be displayed.
- 4 In the search results, select the **Devices** tab (if it is not already selected) and then click on the Metrohm article number of the required instrument (e.g. 2.852.0050).
The page with information pertaining to the searched article is displayed.
- 5 Select the **Parts** tab.
The complete list of accessories with the scope of delivery and the optional accessories will be displayed.
- 6 Click on .



The **Partslists** webpage will be displayed.

7 Select the desired output language.

8 With the article number entered, click on the command **Generate PDF**.

The PDF file with the accessories data will be created in the language selected.

Direct access for all instruments

If you are unable to find your instrument using the search as described above, this may be due to the instrument not being sold anymore. Using the article number, you can download accessories lists for all instruments as follows:

Downloading the accessories list

1 Type <http://partslists.metrohm.com> into your Internet browser.

The **Partslists** webpage will be displayed.

2 Select the desired output language.

3 Enter the article number and click on the **Generate PDF** command.

The PDF file with the accessories data will be created in the language selected.

Index

Numbers/Symbols

805 Dosimat
Connect 14

A

Adapter
Connect 11

B

Backup 34
Balance 40, 53
Connect 10
Interface parameters 36
Balance type 36
Blank value 44
Buret unit
Prepare (PREP) 26

C

Calculation 42
Calculation formula 43
Contact pins 6
Contrast 31

D

Data chip 6
Delay 42
Diagnosis 39
Dialog language 29
Load 38
Dialog type 30
Directory structure 35
Divisor 44
DOS 40
Dosing criteria 48
Dosing key 8
Dosing mode 1
Dosing modes 40
Dosing parameters 41, 48
Dosing ramp 42
Dosing rate 46
Maximum 52

E

Electrostatic charge 4
End of Determination EOD 59
Exchange unit
Attach 15
Expert dialog 30

F

Factor 43, 44
Filling rate
Maximum 52
Fixed volume 46
Formula 43

I

Initialization 56
Installation qualification 51
Instrument
Switch off 17
Switch on 16
Instrument diagnosis 38

K

Keyboard
Connect 11
Key assignment 54, 55
Keyboard layout 36

L

Language 29
Language file
Load 38

M

Mains connection 7
Mains voltage 4
Maintenance 51
Maintenance agreement 51
Manual dosing 40
Manual Dosing Controller 8
Connect 10
Method 20
Create 20
Delete 34
Export 23
Import 34
Load 22
Save 21
Method templates 20

MSB

Connector 7
MSB 1 14

N

Navigate 18
Numerical input 19

O

Operation
General 17
Stirring 24
Operational qualification 51

P

Parameters 40
PC/LIMS report 35
Pin assignment 57
Piston rod 6
PREP
Parameters 52
Preparing
Parameters 52
Print 27
Printer 35, 55
Connect 11
Program crash 56
Program version
Update 38

Q

Quality management 51

R

Remote
Connector 7
Interface 57
Pin assignment 57
Status diagram 58
Remote cable
Connect 13
Remote control 61
Report 44, 49
Print manually 27
Result 43
Routine dialog 31
RS-232
Interface parameters 37
RS-232 connection 61

S

Safety instructions 3
Sample data
Enter 25, 40
Sample size 25
Send from a balance 53
Serial number 7
Service 3

Index

Solution	32
Add	32
Delete	32
Edit solution	32
Select	41, 47
Status LED	8
Stirrer	
Connect	9
Operate	24
Stirring rate	24, 53
Stop key	8
Switch off	17
Switch on	16
System initialization	56

T	
Tandem operation	14, 47
Text input	19
Time-controlled dosing	46
Titration	40
Type plate	7

U	
Uninterrupted	47
Unit	44
Update	
Dialog language	38
Program version	38
USB	54
Numerical keypad	54

PC keyboard	55
Printer	55
USB (OTG)	
Connector	7
USB device	
Adapter	11
Connect	11
USB flash drive	
Directory structure	35
User name	29

X	
XDOS	46