

Not to be cited without prior reference to Marine Scotland, Marine Laboratory, Aberdeen

MRV Scotia

Survey 1716S

PROGRAMME

17 November - 7 December 2016

Loading: Aberdeen, 14 November 2016

Departure: Aberdeen, 17 November 2016

Half Landing: Greenock, 29 November 2016 (Provisional)

Unloading: Aberdeen, 7 December 2016

In setting the survey programme and specific objectives, etc the Scientist-in-Charge needs to be aware of the restrictions on working hours and the need to build in adequate rest days and rest breaks as set out in Marine Scotland's Working Time Policy (Lab Notice 34/03). In addition, the Scientist-in-Charge must formally review the risk assessments for the survey with staff on-board before work is commenced.

In the interest of efficient data management it is now mandatory to return the Survey Report, to I Gibb and the Survey Summary Report (old ROSCOP form) to M Geldart, within four weeks of a survey ending. In the case of the Survey Summary Report a nil return is required, if appropriate.

Personnel

R J Kynoch	(Part 1) (SIC - Part1)
M Kinghorn	(SIC – Part2)
R G-Mules	
N Ensor	
K Summerbell	
E B-Cerezo	
E Barreto	(Part 1)
J Mills	(Part 2)
A Javorski	(Part 2)
M Cobain	(Visitor – Southampton University)

Estimated days by project: 21 days – RV1617 (20392)

Fishing Gear

GOV Trawl (BT137) and ground gear D (hoppers).

Objectives

1. To participate in the ICES co-ordinated western division demersal trawling survey.
2. To obtain temperature and salinity data profiles at each trawling position.
3. To collect additional biological data in connection with the EU data collection framework (DCF)

Procedures

Some fishing gear for 1716S will be loaded at the start of the preceding survey, but the majority will be loaded on 14 November. Loading of all other scientific equipment will take place on 15 November with all equipment being set up and tested on that day. *Scotia* will then sail on 17 November and (after all safety drills and shakedown trawl shoot) commence fishing operations the following morning on the stations to the west of the Orkneys. Weather conditions at the time will determine the exact start area. Survey schedule and operations will be decided by SIC after daily consultation with Fishing Master and Captain. A half landing will be made around 29 November into Greenock to exchange staff, but the date and port are to be confirmed once the vessel has commenced the survey. The survey will end in Aberdeen on 7 December with all staff and equipment and fishing gear returning to the Marine Laboratory.

Trawling

One trawl haul of thirty minutes duration will be made at the positions (approximate) shown on the attached chart. Final trawl locations will be decided after SIC consultations with Fishing Master and Captain. For each haul, the Scanmar monitoring system and NOAA bottom contact sensor will be used to observe and record the performance and geometry of the trawl and trawl doors.

Fish Sampling

All fish will be treated according to current standard research vessel procedures and additional biological data will be collected as determined by EU data regulation 1639/2001 and 1581/2004.

Hydrography Sampling

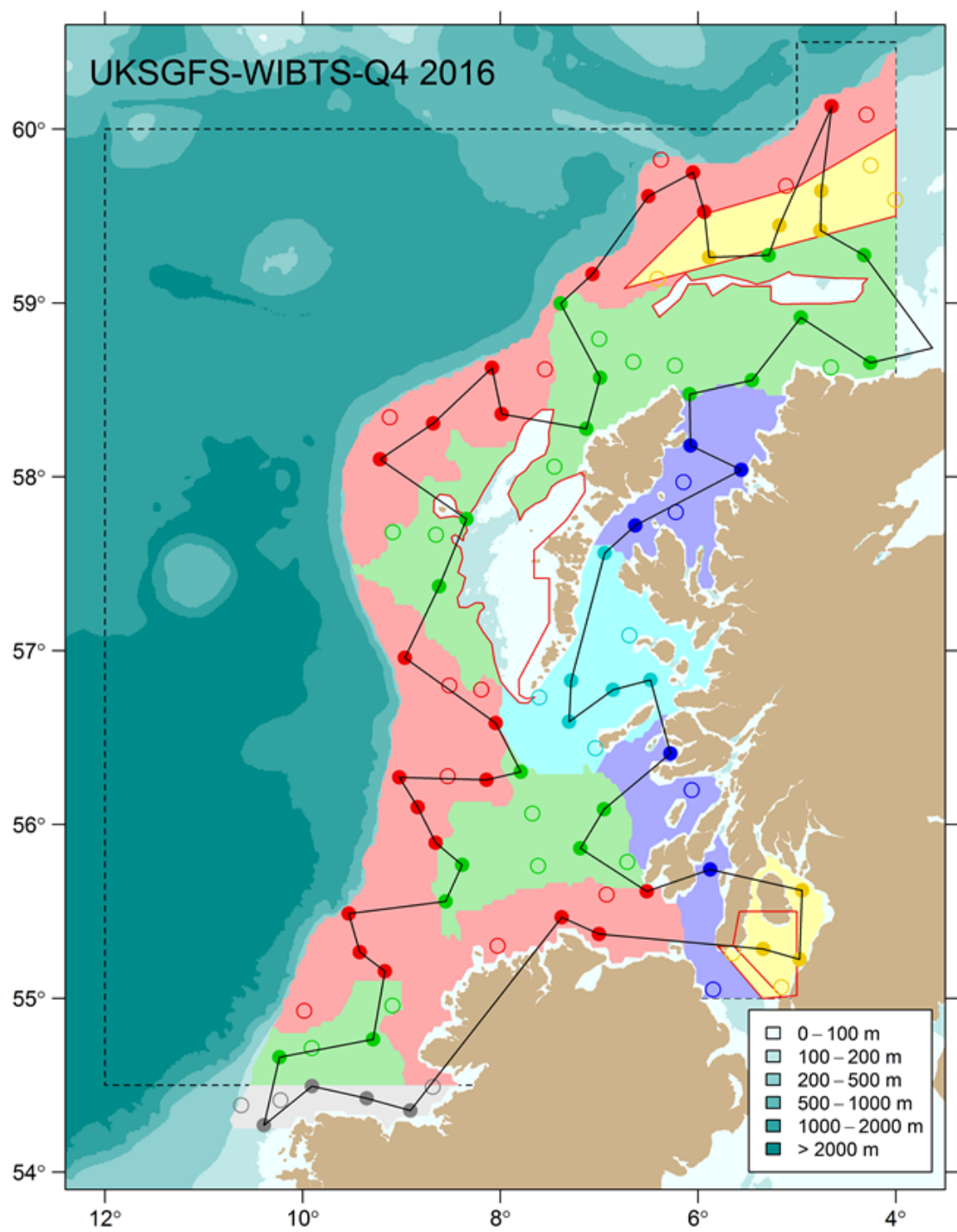
CTD casts will be taken at each trawl station. Please note the thermosalinograph will not be run continuously during this survey due to lack of staff resources in the hydrographic group.

Normal contacts will be maintained with MSS.

Submitted:
R J Kynoch
24 August 2016

Approved:
I Gibb
8 November 2016

1716S: Trawl locations



Plot showing lat and longs for each core station (solid circle). Please note alternative/additional stations (open circles) will be added as time allows.