

**CENTRE FOR ENVIRONMENT, FISHERIES AND AQUACULTURE SCIENCE
LOWESTOFT LABORATORY, SUFFOLK, NR33 0HT**

2016 RESEARCH VESSEL PROGRAMME

PROGRAMME: RV Cefas Endeavour: Survey CEND1016

STAFF:

SIC	Paul Whomersley
DM	Briony Silburn
DM trainee	Gemma Kiff
Shift lead	Rebecca Faulkner
Shift lead	Dan Wood
MIST	Bill Meadows
MIST	Ken May
JNCC	Ana Jesus
Cefas	James Pettigrew
Cefas	Clement Garcia
Cefas	Chris Martin
Cefas	Matt Loar
Cefas	Anna Huk
Cefas	Pete Mitchell
NIFCA?	TBC

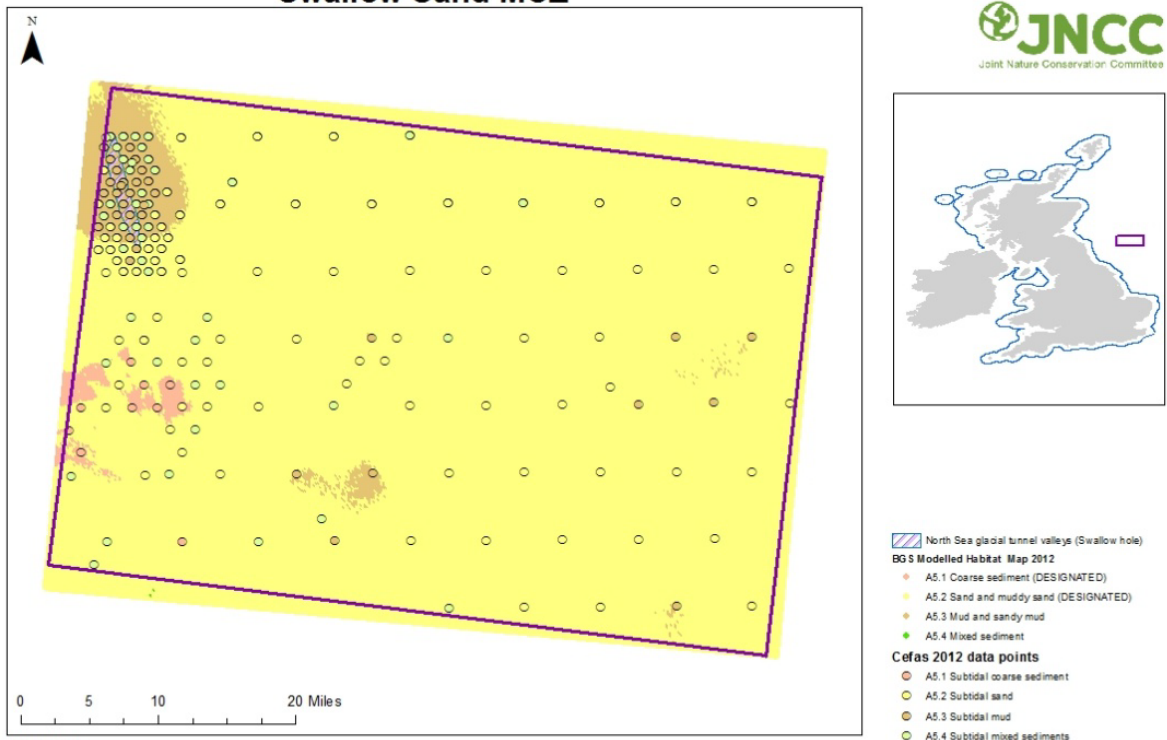
DURATION: 13 days (17th - 29th May).

LOCATION: *Please provide a detailed map and state longitudes and latitudes*

The aims of this survey are to visit the Swallows Sand and / or NE Farnes MCZ to fulfil monitoring objectives. Potential survey plans include MBES within the Swallow sand MCZ and subsequent ground truthing; seabed imagery and mini hamon grabs. See current PoA for more specific details (in draft, Joey O'Connor).

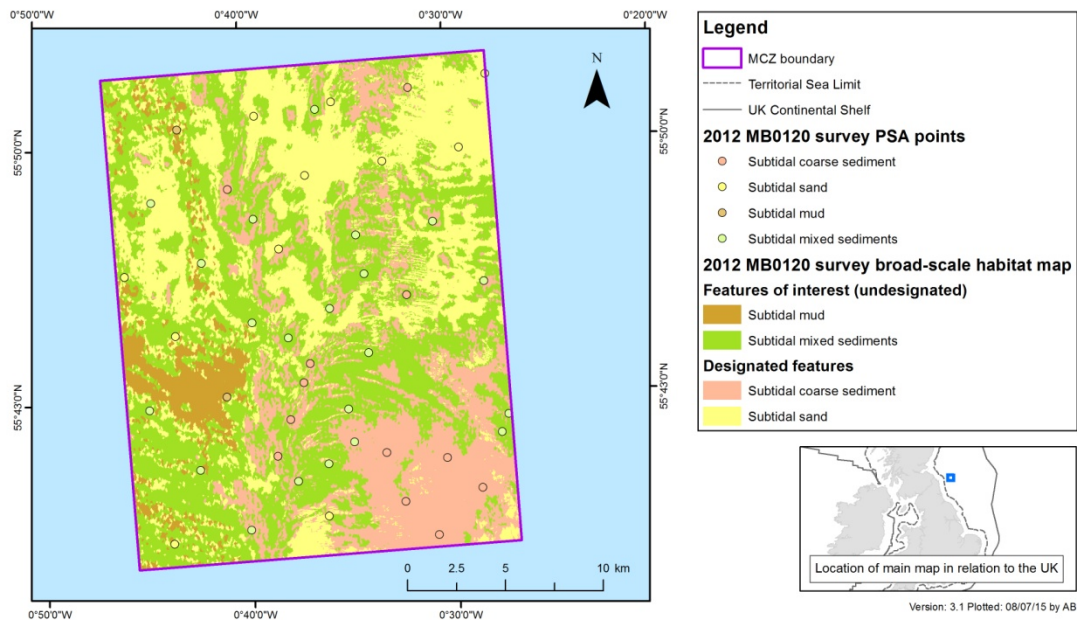
Approximate survey area: 56.116N -1.506E, 56.116N 1.42E, 55.4N 1.42E, 55.4N - 1.506E.

Swallow Sand MCZ



© JNCC DATE
UK Territorial Sea Limit. Contains UKHO data © Crown copyright. All rights reserved. The exact limits of the UK Continental shelf are set out in orders made under section 1 (7) of the Continental Shelf Act 1964 and Continental Shelf (Designation of Areas) Order 2013. Combining source layers from UKHO. © Crown copyright © JNCC.
UK Exclusive Economic Zone © Crown copyright. The exact limits of the EEZ are set out in The Exclusive Economic Zone Order 2013.
World Vector Shoreline © US Defence Mapping Agency. Not to be used for navigation.

North East of Farnes Deep MCZ



2012 MB0120 survey data © JNCC/Cefas. UK Territorial Sea Limit © Crown copyright and UKHO. All rights reserved. The exact limits of the UK Continental shelf are set out in orders made under section 1 (7) of the Continental Shelf Act 1964 (© Crown Copyright). Continental Shelf (Designation of Areas) Order 2013. Combining source layers from UKHO. © UKHO © JNCC.
Not to be used for navigation. © JNCC 07/2015

AIMS:

PLAN:

Vessel inductions are at 14:00 (BST) on the 17th May 2016.

All staff are to be on board for 13:00.

The vessel will sail from Lowestoft on the 17th May at HW 19:30 (BST) and sail approximately 200 nautical miles to commence survey objectives at the survey site. Inductions required for X staff, discuss at pre cruise.

GEAR:

MBES, Mini Hamon, NIOZ, Large Hamon, Camera sledge, Drop camera, 2 m Beam trawl

Paul Whomersley
Scientist In Charge
Date

INITIALLED:

DISTRIBUTION: