

**CENTRE FOR ENVIRONMENT, FISHERIES AND AQUACULTURE SCIENCE
LOWESTOFT LABORATORY, SUFFOLK, NR33 0HT**

2014 RESEARCH VESSEL PROGRAMME

PROGRAMME: Cefas Endeavour: Survey CEND 13/14

STAFF:

Paul Whomersley (Cefas SIC)	SIC
Olga Andres Malago (Cefas Data Manager)	C8

Day Shift (12:00-24:00)

Rob Bush (Cefas Shift Lead)	B1
Ken May (Cefas MIST)	C1
Lee Warford (Cefas)	C2
Sophie Pitois (Cefas)	D2
Dave Limpenny (Cefas)	C3
Ben Green (NE)	C4
(IFCA)	D3

Night Shift (24:00-12:00)

Alex Callaway (Cefas Shift Lead)	B2
James Cook (Cefas MIST)	D4
Daniel Wood (Cefas)	C5
Rachael Beckett (Cefas)	C6
Denise Doran (Cefas)	D5
Joseph Turner (NE)	C7
(IFCA)	D6

DURATION:

18th June-25th June 2014

LOCATION:

Folkestone Pomerania MCZ, Eastern English Channel

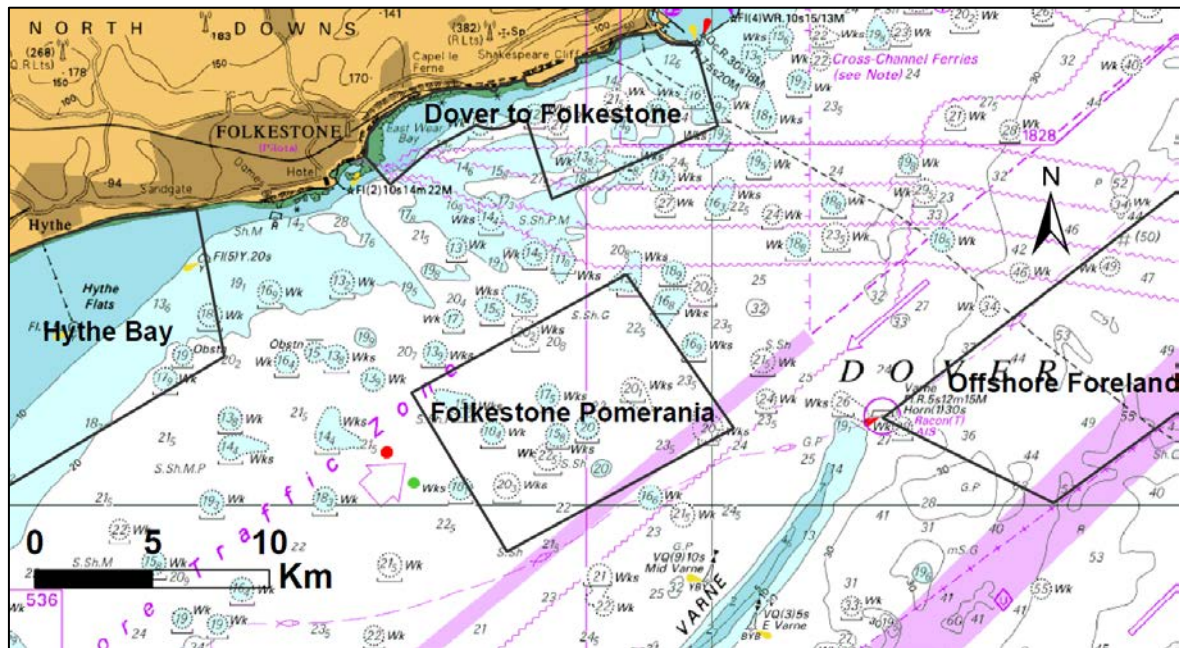


Figure 1. Location of Folkestone Pomerania survey area

AIMS:

- (1) To acquire high quality biological data of suitable resolution to characterise and work towards the establishment of a baseline for future monitoring of the sediment and rock broadscale habitats, and Habitat Features of Conservation Interest (FOCI) which include fragile sponge and anthozoan communities and *Sabellaria* sp reefs found inside the MCZ.
- (2) To acquire high quality biological data of suitable resolution to establish a baseline for future monitoring of sediment and rock broadscale habitats, and where possible, Habitat FOCI, from adjacent un-designated areas outside of the MCZ. Collect both Hamon grab samples and seabed video/stills data.

PLAN:

Depart Lowestoft on 18th June and transit to Folkestone Pomerania MCZ. Proceed with survey to meet aims and objectives (as detailed above). The order with which survey stations are sampled will be guided by more detailed prioritisation of aims and objectives currently being drafted by NE.

To achieve aims 1 and 2, the survey will comprise of a characterisation study of the sediment and rock broadscale habitats, and Habitat FOCI which include fragile sponge and anthozoan communities and *Sabellaria* sp reefs. Samples will be collected from both inside and outside of the designated Folkestone Pomerania MCZ. Hamon grab samples will be collected for piratical size and infaunal community analysis and seabed video/still imagery for epifaunal community characterisation (Figure 2).

A final decision on the suitability of any sample stations that are in close proximity to the TSS will be made in discussion with the captain.

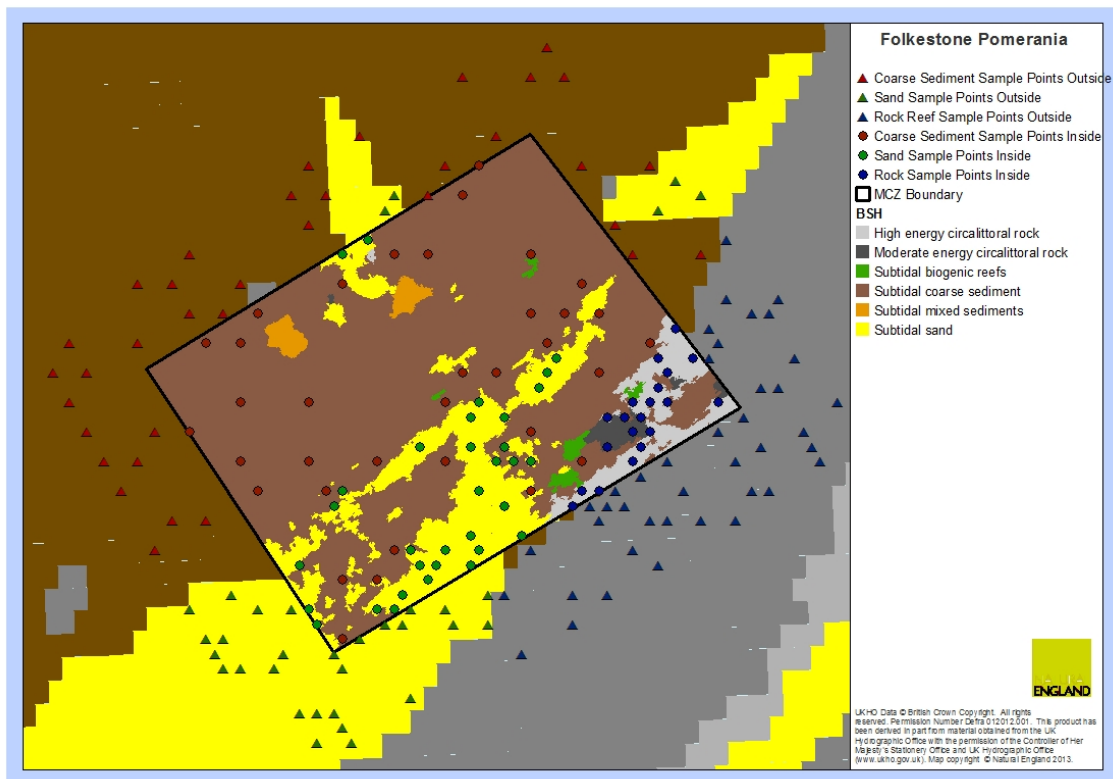


Figure 2. Sampling points for sediment and rock broadscale habitats (using a 0.1 m² Hamon grab and drop camera with video and stills system).

GEAR:

- 0.1m² Hamon grab (HamCam)
- Camera Sledge with video and stills system
- Drop Camera with Video and still system
- Shipek grab

Paul Whomersley
 Scientist in Charge
 04/06/14

INITIALLED:

DISTRIBUTION: