

**CENTRE FOR ENVIRONMENT, FISHERIES AND AQUACULTURE SCIENCE
LOWESTOFT LABORATORY, SUFFOLK, NR33 0HT**

2014 RESEARCH VESSEL PROGRAMME

PROGRAMME: Cefas Endeavour: Survey CEND2314

STAFF:

SIC: Paul McIlwaine

Shift leader: Ken May

Shift leader: Jackie Eggleton –Induction @11:00 31st Oct

Acoustic lead: Alison Pettafor –Induction @11:00 31st Oct

Survey staff: Bill Meadows

Survey staff: Dan Wood

Survey staff: Boby Thomas–Induction @11:00 31st Oct

Survey staff: Buster Rook-Bishop

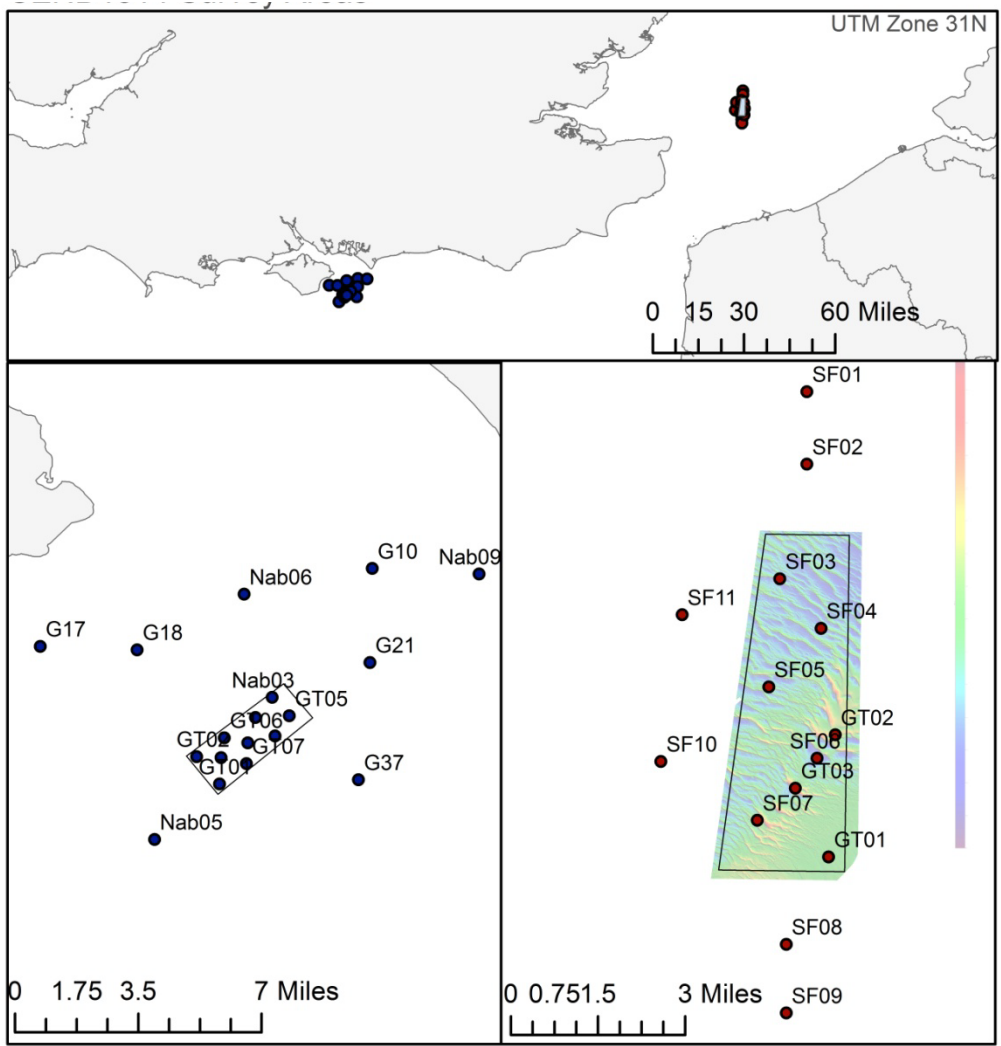
Survey staff: James Cook

DURATION: 31st Oct to 5th Nov 2014 (5 days)

Confirm times:

LOCATION: Nab tower and South Falls licensed dredge disposal areas (Figure 1).

AIMS: 100% coverage MBES at two sites plus ground truthing and infaunal surveys.



- S_Falls_and_Nab_Tower_disposal_sites
- NAB2014TargetStations
- South_Falls_grab



© Crown Copyright 2014

Figure 1 Survey areas

PLAN: Inductions at 11:00. Scientists on board for lunch. Depart Lowestoft on the 31st Oct 2014 (HW 14:59 GMT) following equipment mob. 2 hrs of calibrations at a location on route TBC. Transit to the first survey area (South Falls) to conduct a 50 hour MBES and sediment sampling survey. MBES lines orientated in line with TSS as per CEND2314. Transit to Nab Tower to conduct a 40 hour acoustic and grab survey. Returning to Lowestoft on the evening tide of the 5th March 2014 (HW 20:16 GMT).

Approximate distances/timings:

Calibration: 2 hrs

Low to SF: 60 miles (5.5 hrs)

SF to Nab: 130 miles (12 hrs)

Nab to Low: 190 miles (17.5 hrs)

GEAR: Calibrated MBES, mini Hamon grab, Day grab, Shipek grab plus spares for each grab type, benthic ecology survey equipment and formalin. Hexane.

NOTES: 24 hours working. Request the ships track as '.cvt' file from Transas navigation system. Sediment sampling locations and the location of the MBES calibration site are to be provided to the vessel prior to sailing.

Paul McIlwaine
Scientist in Charge
16/09/2014

INITIALLED: Paul McIlwaine

DISTRIBUTION: P&O, MIST, SIC, Shift leads.