

BERICHTE

aus dem MARUM und dem Fachbereich
Geowissenschaften der Universität Bremen

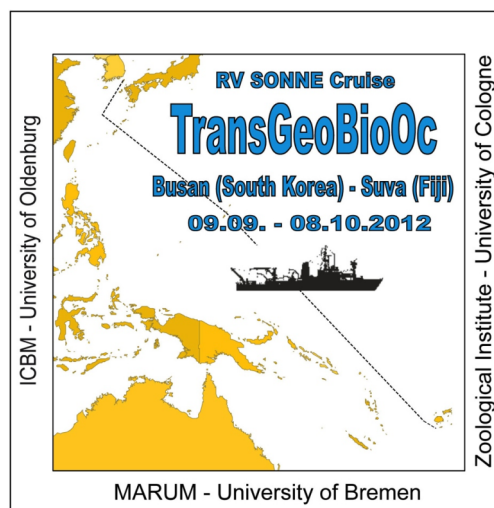
No. 289

Mohtadi, M., Arndt, H., Behrens, M., Klann, M., Marschall, J.,
Meiners, L., Nitsche, F., Pahnke, K., Schönle, A., Steinke, S.

REPORT AND PRELIMINARY RESULTS OF RV SONNE CRUISE SO 223T.

TransGeoBioOc.

Busan – Suva, 09.09.2012 – 08.10.2012.



Berichte, MARUM – Zentrum für Marine Umweltwissenschaften, Fachbereich
Geowissenschaften, Universität Bremen, No. 289, 47 pages, Bremen 2012

ISSN 0931-0800

The "Berichte aus dem MARUM und dem Fachbereich Geowissenschaften" are produced at irregular intervals by the Department of Geosciences, Bremen University and by MARUM – Center for Marine Environmental Sciences. They serve for the publication of cruise, project and technical reports.

Reports can be ordered from:

Monika Bachur

MARUM – Zentrum für Marine Umweltwissenschaften

Universität Bremen

Postfach 330 440

D 28334 BREMEN

Phone: (49) 421 218-65516

Fax: (49) 421 218-65515

e-mail: MBachur@uni-bremen.de

Reports can also be downloaded from:

<http://nbn-resolving.de/urn:nbn:de:gbv:46-MARUM9>

Citation:

Mohtadi, M. and cruise participants

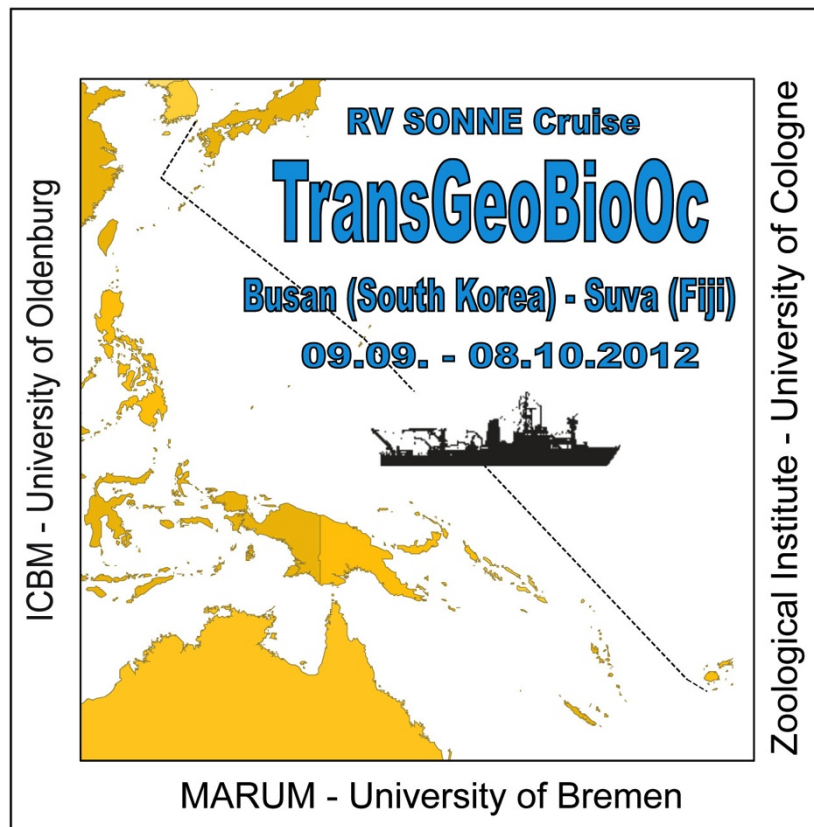
Report and preliminary results of RV SONNE Cruise SO 223T. TransGeoBiOc. Busan – Suva,
09.09.2012 – 08.10.2012.

Berichte, MARUM – Zentrum für Marine Umweltwissenschaften, Fachbereich Geowissenschaften, Universität Bremen, No. 289, 47 pages. Bremen, 2012. ISSN 0931-0800.

Cruise Report

TransGeoBioOc

RV SONNE Cruise SO-223T



Busan (09.09.2012) – Suva (08.10.2012)

Mohtadi, M., Arndt, H., Behrens, M., Klann, M., Marschall, J., Meiners, L., Nitsche, F., Pahnke, K., Schönle, A., Steinke, S.

Content

1	Participants.....	4
2	Research Program.....	8
	2.1 The contribution of submarine volcanic CO ₂ -sources to the glacial/interglacial variations in atmospheric CO ₂	8
	2.2 Deep-sea nanofauna diversity in the western Pacific.....	9
	2.3 Neodymium isotope and rare earth element distributions in the..... western tropical and North Pacific	10
	2.4 Oceanic shipboard precipitation validation.....	10
	2.5 Maritime aerosol network.....	11
	2.6 References.....	11
3	Narrative of the Cruise.....	14
4	CTD Profiling and Water Sampling.....	18
	4.1 Instrumentation.....	18
	4.2 Water sampling.....	19
	4.3 Suspended particle and porewater sampling.....	20
	4.4 Sample processing.....	21
5	Sub-bottom Profiler, Swath Bathymetry Sounder.....	23
6	Sediment Sampling.....	24
	6.1 Multi-Corer.....	24
	6.2 Sub-sampling of the Multi-Corer	25
	6.3 Sediment classification.....	25
7	Counting, Isolation and Cultivation of Protists from.....	25
	Water and Sediment Samples	
	7.1 Sediment samples.....	25
	7.2 Plankton samples.....	26
8	Collection and Cultivation of Rainwater.....	26
9	Experiments on Pressure Tolerance of Deep-sea Protists.....	27
10	Sunphotometer Microtops II.....	28
11	Optical Disdrometer.....	28
12	Shipboard Results	30
	12.1 Site survey.....	30
	12.2 Sediments.....	35
	12.3 Counting, Isolation and cultivation of protists.....	37
	12.4 Hydrography.....	40
	12.5 Aerosol optical depth of 500 nm.....	46
13	Station List SO-223T.....	47

Acknowledgements

The scientific party of the TransGeoBioOc expedition (SO-223T) gratefully acknowledges the friendly co-operation and efficient technical assistance of Captain Meyer and his crew, who all together contributed significantly to the success of this expedition. We thank also the German Ministry of Education and Research (BMBF) for funding the cruise.

1 Participants

Scientific Party SO-223T

September 9, 2012 – October 8, 2012

Busan (South Korea) – Suva (Fiji)

Name	Discipline	Institute
Mohtadi, Mahyar	Paleoceanography	MARUM (Chief Scientist)
Arndt, Hartmut	Zoology	UzK
Behrens, Melanie	Geochemistry	ICBM
Klann, Marco	Paleoceanography	MARUM
Marschall, Julia	Meteorology	MPI
Meiners, Lene	Geochemistry	ICBM
Nitsche, Frank	Zoology	UzK
Pahnke, Katharina	Geochemistry	ICBM
Schönle, Alexandra	Zoology	UzK
Steinke, Stephan	Paleoceanography	MARUM

Crew list SO-223T

SO-223T

September 9, 2012 – October 8, 2012

Busan (South Korea) – Suva (Fiji)

Name	Rank
Meyer, Oliver	Master
Aden, Nils-Arne	Chief Officer
Goebel, Jens	2. Officer
Hoffsommer, Lars	2. Officer
Raabe, Konrad	Ship's doctor
Rex, Andreas	Chief Engineer
Genschow, Steffen	2. Engineer
Hermesmeyer, Dieter	2. Engineer
Pieper, Carsten	2. Engineer
Beyer, Thomas	Electrician
Leppin, Jörg	Chief Electronic Engineer
Meinecke, Stefan	System Manager
Rosemeyer, Rainer	Fitter
Bolik, Torsten	MPC / Motorman
Ide, Steven	MPC / Motorman
Tiemann, Frank	Chief Cook
Garnitz, André	2. Cook
Pohl, Andreas	Chief Steward
Royo, Luis	2. Steward
Schrapel, Andreas	Boatswain
Altendorf, Denis	Multi-purpose Rating / A.B.
Barkow, Michael	Multi-purpose Rating / A.B.
Eidam, Oliver	Multi-purpose Rating / A.B.
Fricke, Ingo	Multi-purpose Rating / A.B.
Kraft, Jürgen	Multi-purpose Rating / A.B.
Mohrdiek, Finn	Multi-purpose Rating / A.B.
Hainke, Geert	Cadet
Schernick, Robert	Trainee
Schröder, Andreas	Trainee

Institutions

MARUM

Zentrum für Marine Umweltwissenschaften
Universität Bremen
Leobener Straße
28359 Bremen
Germany

MPI

Max-Planck-Institut für Meteorologie
Bundesstraße 52
20146 Hamburg
Germany

ICBM

Institut für Chemie und Biologie des
Meeres (ICBM)
Universität Oldenburg
Carl-von-Ossietzky-Str. 9-11
26129 Oldenburg
Germany

UzK

Zoologisches Institut
Biozentrum Köln
Universität zu Köln
Zülpicher Straße 47b
50674 Köln
Germany



Fig. 1.1 Scientific party of the expedition SO-223T

2 Research Program

2.1 The contribution of submarine volcanic CO₂-sources to the glacial/interglacial variations in atmospheric CO₂

To date, the causes of the glacial/interglacial variations in atmospheric CO₂ are still poorly understood. It has been proposed that atmospheric CO₂ was sequestered into an abyssal water mass located in the Pacific during glacials for thousands of years and then ventilated rapidly through intermediate waters that circulated through the Southern Ocean during the last glacial termination (e.g. Broecker and Barker, 2007). In the case of the so-called “deep-water reservoir hypothesis” however, there is no clear evidence that an isolated deep-water reservoir rich in CO₂ was released during the last glacial termination (Broecker, 2009). To date, evidence for a deglacial release of an “old” water mass through intermediate waters (400-600 m) has been found in the eastern tropical Pacific (Marchitto et al., 2007; Stott et al., 2009). However, studies based on sedimentary archives located closer to the Southern Ocean show that an isolated deep-water reservoir rich in CO₂ was not released through intermediate waters in the Southern Ocean (De Pol-Holz et al., 2010, Magana et al., 2010; Rose et al., 2010).

During the past decade submarine surveys conducted along the active volcanic arcs in the Pacific and at hydrothermal vents in the NE and tropical E Pacific have discovered CO₂-rich fluids venting at intermediate water depths (e.g. Inagaki et al., 2006; Lupton et al., 2006). Estimates of the CO₂ flux at these sites are sparse and the spatial extent of active vents from which there is a separate CO₂ gas or liquid phase venting has only recently come to light. The initial results from these surveys indicate that there are CO₂ fluxes from submarine arc volcanoes along the Pacific trench system in the western Pacific that far exceed that of Mid Ocean Ridge systems and hence, constitute a greater source of carbon to the global carbon budget than was previously thought. Most notably, liquid CO₂ is not only venting from these sites, liquid CO₂ is accumulating within the sediments on the margins of active volcanoes, kept in place by a hydrate caps that regulate the steady-state flux of neutrally buoyant liquid CO₂ from the sediments beneath. To date, liquid CO₂ accumulations have only been observed at sites in the western Pacific. The distribution of sites where liquid CO₂ is documented includes the Okinawa Trough, the volcanoes along the Mariana and the Tonga-Kermadec Arcs.

We are drawn to these recent observations as a means of explaining the enigmatic nature of the glacial/interglacial CO₂ changes. If indeed there is an additional source of CO₂ that contributes to the glacial/interglacial variability in addition to CO₂ dissolved in deep water reservoirs, a strategically important place to test this idea is near the source of that carbon. The back arc of the Mariana system near the Island of Rota is an ideal location to investigate the deglacial signature from intermediate water depths near one of the active volcanic systems. During the SO-223T cruise, it is intended to obtain a suite of cores from sites near the Island of Rota that can yield biogenic carbonate through the last glacial termination to investigate whether there were sources of CO₂ released from the North Pacific volcanic systems that contributed to the distinctive glacial/interglacial CO₂ cycles.

2.2 Deep-sea nanofauna diversity in the western Pacific

Although the abyssal seafloor (3000-6000 m depth) represents the most typical common benthic environment on this planet, covering 54 % of the Earth's solid surface, eukaryotic microbial life at abyssal depths is still uncharted territory in eukaryotic microbiology. This is in striking contrast to their importance regarding the material flux in other aquatic ecosystems of the biosphere. Understanding the role of microbial eukaryotic communities in the deep-sea should be essential for understanding global biogeochemical cycles (Azam & Malfatti 2007). Molecular environmental diversity studies have up to now focused on assumed 'hot spots' of activity (e.g., hydrothermal vents, methane seeps) mostly from the bathyal zone. Almost all of these studies were carried out on a local-scale (Edgcomb et al. 2002, 2009, Stoeck et al. 2003).

Abyssal plains have never been considered in a global comparison. Knowledge of diversity and spatial patterns of deep-sea community structure is thus lacking and originates primarily from morphology based studies of foraminiferans (e.g., Gooday 1999) and there are only anecdotal reports for other protists (Hausmann et al. 2002; Arndt et al. 2003; Scheckenbach et al. 2005). Environmental molecular surveys have revolutionized our understanding of microbial diversity, indicating how far we are from understanding microbial diversity in the depth (Lopez-Garcia et al. 2001, 2003, Alexander et al. 2008).

Abyssal plains are among the Earth's flattest and smoothest regions and are covered with muddy soft sediments. They had formerly been assumed to be vast, desert-like contiguous habitats with relatively constant physical and chemical parameters. Recent studies of prokaryotes have shown that even the deepest parts of our Earth are teemed with a large variety of life (Jørgensen & Boetius 2007). The perceived homogeneity of abyssal environments with little environmental variation has led to the assumption that species have broad distribution ranges. This is in fact supported by studies of foraminiferans which, to some extent, have geographic ranges encompassing entire abyssal plains (Gooday et al. 2007, Pawlowski et al. 2007, Pawlowski & Holzman 2008). However, environmental gradients do shape deep-sea community structure, especially those of in benthic environments (Levin et al. 2001). Except for studies by Countway et al. (2007), community driven molecular deep-sea studies of microbial eukaryotes communities in the deep-sea have all been carried out on a local scale. Local-scale studies of benthic deep-sea microbial communities reported differences in the community structures between adjacent sampling sites (Edgcomb et al. 2002, Huber et al. 2007). Knowledge of large-scale patterns of deep-sea community structures is thus missing but necessary to allow the assessment of the forces driving biodiversity and biogeography in the deep.

Recently, we reported on the high phylogenetic diversity of microbial eukaryotic communities of the deep-sea basins of the South-East and West Atlantic and the Mediterranean Sea (Scheckenbach et al. 2010, Shah Salani et al. 2012). An exceptionally high percentage of clones had no close representatives in genetic databases at all. Many clones were affiliated to parasitic species. Furthermore, we could show that environmental gradients clearly shape community structure at the landscape level as differences amongst the Cape Abyssal Plain and the other abyssal plains have revealed. Nevertheless, on a regional scale, local species diversity showed no geographic variation up to our present knowledge. During the SO-223T cruise, it was intended to obtain Multi-Core samples from the undisturbed and populated sediment surface layer from two deep-sea basins of the North-West Pacific. A second aim was to collect sediment surface samples near the Island of Rota to analyze changes in the

nanofauna community along a depth gradient down to the Mariana trench. In continuation of our studies on global distribution mechanisms and patterns of protists we would also like to collect rain samples to study airborne protists potentially reaching the deep sea by sedimentation. In addition, we would like to compare deep-sea nanofauna community structure to that of surface water communities by investigating surface and near bottom water communities.

2.3 Neodymium isotope and rare earth element distributions in the western tropical and North Pacific

Trace elements and their isotopes (TEIs) play important roles in biogeochemical processes in the ocean. Many are important micronutrients, contaminants, or tracers of biogeochemical processes, element fluxes or changes in the ocean today and in the past. Yet, few data exist that would allow for a detailed understanding of TEI distributions and the processes that control them. Neodymium isotope ratios ($^{143}\text{Nd}/^{144}\text{Nd}$; expressed in ϵ_{Nd} notation, the fractional deviation of the $^{143}\text{Nd}/^{144}\text{Nd}$ in a sample from the value of the bulk silicate Earth in parts per 10^4) and rare earth element (REE) concentrations are useful tracers for the origin and pathways of water masses, provenance of terrestrial material transported to the ocean (e.g., dust, river load), and element fluxes at continental margins and the seafloor (Frank, 2002; Lacan and Jeandel, 2005). They can therefore provide important information on trace element sources and processes in the ocean.

In the Atlantic, where ocean circulation is vigorous, Nd isotope ratios mirror the water mass structure and pathways well, and models that do not include margin exchange as major process controlling the seawater isotopic composition, reproduce the current Nd isotope distribution (Siddall et al., 2008). This suggests that ocean circulation is a dominant factor in setting the ϵ_{Nd} distribution in the Atlantic. In the Pacific, on the other hand, where full water-column ϵ_{Nd} profiles are scarce (<20; e.g., Lacan and Jeandel, 2001; Amakawa et al., 2004; 2009; Pahnke et al., 2012) and ocean circulation less vigorous, reversible scavenging and margin exchange may contribute to the vertical and spatial Nd isotope distribution (Siddall et al., 2008; Jones et al., 2008).

The TransGeoBioOc transect from Busan to Suva will more than double the available seawater ϵ_{Nd} profiles in the Pacific north of 15°S , and provide new insight into 1) the ϵ_{Nd} signature of the different water masses in the Pacific (Pacific Deep and Intermediate Water, Antarctic Bottom Water, Antarctic Intermediate Water), 2) the modification of these signatures along the transport pathways of water masses and in the Equatorial Undercurrent (EUC) (through water mass mixing and/or isotopic exchange along continental margins), and 3) the sources and distributions of REEs in the West Pacific.

2.4 Oceanic shipboard precipitation validation

State-of-the-art satellite-derived and reanalysis-based precipitation data still show remarkably large differences in frequency, amount, intensity, variability, and temporal behavior of precipitation over the oceans. The uncertainties are largest for light precipitation within the Intertropical Convergence Zone and for cold season high-latitude precipitation including mix-phase and snowfall. Hence, the International Precipitation Working Group (IPWG) under WMO (World Meteorological Organization) and GPM-GV (Global Precipitation Measurement – Ground Validation – the new satellite based generation of precipitation

measurement from space) is urging that more attention should be paid to the provision of high quality surface validation data in oceanic areas using innovative ship-based instruments. Precipitation studies would greatly benefit from systematic data collection and analysis.

To achieve this goal, the KlimaCampus and Max Planck Institute for Meteorology in Hamburg, Germany, initiated the project "OCEANIC SHIPBOARD PRECIPITATION VALIDATION" within the Excellence Cluster of the University of Hamburg that uses automated shipboard optical disdrometers, called Eigenbrodt ODM470, that are capable of measuring liquid and solid precipitation on moving ships with high accuracy even under high wind speeds and rough sea states. Since the start of the project in 2009, the statistical basis for a conclusive validation has significantly improved with comprehensive data collection of more than 200,000 minutes of precipitation onboard six ships.

Currently three optical disdrometers are permanently mounted onboard the research vessels Polarstern, Akademik Ioffe, and Maria S. Merian and another three instruments are used for individual cruises like the one onboard the RV SONNE during cruise SO-223T.

2.5 Maritime aerosol network

MAN (Maritime Aerosol Network) is a program that collects data, which are obtained from the sun photometer Microtops II on ships. The Microtops II measures the direct solar radiation and through the calculation of the aerosol optical depth (AOD) it is possible to draw conclusions about aerosols in the atmosphere. This is an alternative to measurements from islands and can be used as a control for aerosol transport models.

MAN is part of AERONET (Aerosol Robotic Network), a network for long-term continuous aerosol data and accessible through a public domain database of aerosol optical, microphysical and radiative properties for aerosol research and characterization and synergism with other databases. The network was established and is run by NASA and receives its data from many international institutes.

During cruise SO-223T, a sun photometer was used to obtain data for MAN. The data were submitted to the network and are publically accessible under: http://aeronet.gsfc.nasa.gov/new_web/cruises_new/Sonne_12_0.html

2.6 References

- Alexander, E. *et al.* (2008), Microbial eukaryotes in the hypersaline anoxic L'Atalante deep-sea basin. *Env. Microbiol.* **11**, 360-381.
- Amakawa, H., *et al.* (2004), Neodymium isotopic variations in Northwest Pacific waters. *Geochim. et Cosmochim. Acta* **68**, 715-727.
- Amakawa, H., *et al.* (2009), Nd isotopic composition in the central North Pacific. *Geochim. et Cosmochim. Acta* **73**, 4705-4719.
- Arndt, H., *et al.* (2003), Deep-sea heterotrophic nanoflagellates of the Eastern Mediterranean Sea: qualitative and quantitative aspects of their pelagic and benthic occurrence. *Marine Ecol. Prog. Ser.* **256**, 45-56
- Azam, F. and Malfatti, F. (2007), Microbial structuring of marine ecosystems. *Nature Rev. Microbiol.* **5**, 782-791.
- Broecker, W. and Barker, S. (2007), A 190‰ drop in atmosphere's D¹⁴C during the "Mystery Interval" (17.5 to 14.5 kyr). *Earth Planet. Sci. Lett.* **256**, 90-99.
- Broecker, W. S. (2009), Wally's Quest to Understand the Ocean's CaCO₃ Cycle. *Ann. Rev. Marine Sci.* **1**, doi:doi:10.1146/annurev.marine.010908.163936.

- Countway, P.D. *et al.* (2007), Distinct protistan assemblages characterize the euphotic zone and deep sea (2500 m) of the western North Atlantic (Sargasso Sea and Gulf Stream). *Env. Microbiol.* **9**, 1219–1232.
- De Pol-Holz, R. *et al.* (2010), No signature of abyssal carbon in intermediate waters off Chile during deglaciation. *Nature Geosci.* **3**, 192-195.
- Edgcomb, V.P. *et al.* (2002), Benthic eukaryotic diversity in the Guaymas Basin hydrothermal vent environment. *PNAS* **99**, 7658-7662.
- Edgcomb, V.P. *et al.* (2009), Protistan community patterns within the brine and halocline of deep hypersaline anoxic basins in the eastern Mediterranean Sea. *Extremophiles* **13**, 151-167.
- Frank, M. (2002), Radiogenic isotopes: Tracers of past ocean circulation and erosional input. *Rev. Geophys.* **40**, 1001, doi:10.1029/2000RG000094.
- Gooday, A.J. (1999), Biodiversity of foraminifera and other protists in the deep sea: Scales and patterns. *Belgian J. Zoology* **129**, 61-80.
- Gooday, A.J. *et al.* (2007), The biodiversity and biogeography of komokiaceans and other enigmatic foraminiferan-like protists in the deep Southern Ocean. *Deep-Sea Res. II* **54**, 1691-1719.
- Hausmann, K. *et al.* (2002), *Meteora sporadica* gen. nov. et sp. nov. (Protista *incertae sedis*) - an extraordinary free-living protist from the Mediterranean deep sea. *Europ. J. Protistol.* **38**, 171-177
- Huber, J.A. *et al.* (2007), Microbial population structures in the deep marine biosphere. *Science* **318**, 97-100.
- Inagaki, F. *et al.* (2006), Microbial community in a sediment-hosted CO₂ lake of the southern Okinawa Trough hydrothermal system. *PNAS* **103**, 14,164-14,169.
- Lacan, F., and C. Jeandel (2001), Tracing Papua New Guinea imprint on the central Equatorial Pacific Ocean using neodymium isotopic compositions and Rare Earth Element patterns. *Earth Planet. Sci. Lett.* **186**, 497-512.
- Lacan, F., and C. Jeandel (2005), Neodymium isotopes as a new tool for quantifying exchange fluxes at the continent-ocean interface. *Earth Planet. Sci. Lett.* **232**, 245-257.
- Levin, L.A. *et al.* (2001), Environmental influences on regional deep-sea species diversity. *Ann. Rev. Ecol. System.* **32**, 51-93.
- Jørgensen, B.B. and Boetius, A. (2007), Feast and famine - microbial life in the deep-sea bed. *Nature Rev. Microbiol.* **5**, 770-781.
- López-García, P. *et al.* (2001), Unexpected diversity of small eukaryotes in deep-sea Antarctic plankton. *Nature* **409**, 603-607.
- López-García, P. *et al.* (2003), Autochthonous eukaryotic diversity in hydrothermal sediment and experimental microcolonizers at the Mid-Atlantic Ridge. *PNAS* **100**, 697-702.
- López-García, P. *et al.* (2007), Eukaryotic diversity associated with carbonates and fluid-seawater interface in Lost City hydrothermal field. *Env. Microbiol.* **9**, 546-554.
- Lupton, J., *et al.* (2006), Submarine venting of liquid carbon dioxide on a Mariana Arc volcano. *Geochem. Geophys. Geosyst.* **7**, Q08007, doi:10.1029/2005GC001152.
- Magana, A.L. *et al.* (2010), Resolving the cause of large differences between deglacial benthic foraminifera radiocarbon measurements in Santa Barbara Basin. *Paleoceanography* **115**, doi:10.1029/2010pa002011.
- Marchitto, T. M. *et al.* (2007), Marine radiocarbon evidence for the mechanism of deglacial atmospheric CO₂ rise. *Science* **316**, 1456-1459.
- Pahnke, K., *et al.* (2012), GEOTRACES intercalibration of neodymium isotopes and rare earth element concentrations in seawater and suspended particles - Part 2: systematic tests and baseline profiles. *Limn. Oceanogr. Meth.* **10**, 252-269.
- Pawlowski, J. *et al.* (2007), Bipolar gene flow in deep-sea benthic foraminifera. *Molec. Ecol.* **16**, 4089-4096.
- Pawlowski, J. and Holzmann, M. (2008), Diversity and geographic distribution of benthic foraminifera: a molecular perspective. *Biodiv. Conserv.* **17**, 317-328.
- Rose, K.A. *et al.* (2010), Upper-ocean-to-atmosphere radiocarbon offsets imply fast deglacial carbon dioxide release. *Nature* **466**, 1093-1097.
- Scheckenbach, F. *et al.* (2005), Molecular identity of strains of heterotrophic flagellates isolated from surface waters and deep-sea sediments of the South Atlantic based on SSU rDNA. *Aquat. Microb. Ecol.* **38**, 239-247
- Scheckenbach, F. *et al.* (2010), Large-scale patterns in biodiversity of microbial eukaryotes from the abyssal sea floor. *PNAS* **107**, 115-120
- Shah Salani, F. *et al.* (2012), Analysis of the community structure of abyssal kinetoplastids revealed similar communities at larger spatial scales. *ISME Journal* **6**, 713-723.
- Siddall, M., *et al.* (2008), Towards explaining the Nd paradox using reversible scavenging in an ocean general circulation model. *Earth Planet. Sci. Lett.* **274**, 448-461.

Stoeck, T. *et al.* (2003), Novel eukaryotes from the permanently anoxic Cariaco Basin (Caribbean Sea). *Appl. Env. Microbiol.* **69**, 5656-5663.

Stott, L. *et al.* (2009), Radiocarbon age anomaly at intermediate water depth in the Pacific Ocean during the last deglaciation. *Paleoceanography* **24**, doi:10.1029/2008PA001690.

3 Narrative of the Cruise

09.09.2012, Sunday

In the morning, the scientific crew for the cruise SO-223T boarded the RV SONNE at the port of Busan, South Korea. The main target of this and the following day was to set up the scientific equipment and prepare the laboratories onboard RV SONNE.

10.09.2012, Monday

In the early afternoon, the container (reefer) arrived at the port of Busan and the discharge of the container loaded with scientific equipment started immediately. All the labs could be prepared during this day.

11.09.2012, Tuesday

RV SONNE left the port of Busan at 9 AM heading towards the first station of the cruise in the Northwest Pacific. The vessel reached the first station at 4 PM local time and the first CTD-Rosette water sampler was successfully deployed under perfect weather conditions.

12.09.2012, Wednesday

During this day, two CTD-Rosette water samplers were deployed down to 748 m and 3357 m water depth, respectively. After the successful deployment of the second CTD-Rosette water sampler, we started the sub-bottom profiling with Parasound in order to identify a suitable location for the first Multi-Corer deployment around 25°N, 134°E and at a water depth of about 5000 m.

13.09.-14.09.2012, Thursday-Friday

Station GeoB 17004 located between the Hikoku and the Philippine Basins started in the morning of Tuesday with the CTD-Rosette water sampler followed by a Multi-Corer. All casts were successful and the retrieved material was sampled, labeled and packed immediately after recovery. The retrieved material consisted of dark reddish brown homogenous deep-sea clay.

15.09.2012, Saturday

At station GeoB 17005, another CTD-Rosette water sampler was deployed. Overnight the wind increased significantly with wave heights of up to 4 m as a consequence of the typhoon „Sanba”, which passed close by on its way north to the Korean coast.

16.09.-17.09.2012, Sunday-Monday

The weather and sea conditions prevailed over the course of the day. Wind and sea conditions, however, became much better in the late afternoon of Sunday. We reached our

working area near Rota Island on Monday (17.09.2012). Site survey started immediately and the entire day and night were spent with site surveying.

18.09.-19.09.2012, Tuesday-Wednesday

The entire night of Monday to Tuesday were spent with site surveying. Evaluation of the site survey data revealed several promising sites at different water depths between 1200 and 3000 m for obtaining high-resolution sedimentary archives. Some disappointment arose from the fact that the first retrieved Multi-Corer was empty and the second Multi-Corer retrieved only 19 cm of sediment. The sediments were sandy (foraminiferal ooze with volcanic glass; see description below) at this site, which obviously allowed no deeper penetration of the Multi-Corer. Another Multi-Corer was deployed at a water depth of around 1800 m (station GeoB 17007-1). Similar to the previous station, only sandy sediments were recovered. Maximum recovery was 13 cm. We decided not to deploy a gravity corer due to the sandy nature of the sediment. Instead, we left for the next station (GeoB 17008-1). Although the recovery of the Multi-Corer was with 19 cm slightly higher, again only sandy sediments were cored. The nature of the sediments again prevented deployment of a gravity corer. After finishing this station, we left for station GeoB 17009-1 at 2686 m water depth. Here again a foraminiferal ooze of 17 cm thickness was retrieved. Another Multi-Corer at station (GeoB 17010) was empty. After finishing this station and without any gravity corer deployment, we left our working area near Rota Island rather disappointed and headed towards the Mariana Trench.

20.09.2012, Thursday

The entire day was spent with site surveying in order to identify an appropriate location for a Multi-Corer deployment in a water depth of around 7000 m. The intention was to obtain undisturbed sediment surfaces for biological studies from the Mariana Trench. However, no location for a Multi-Corer deployment was found due to steep morphology of the basin. We left the Mariana Trench for a next CTD-Rosette water sampler deployment.

21.09.2012, Friday

A CTD-Rosette water sampler was deployed in Micronesian waters (station GeoB 17011). Site survey started immediately after the CTD-Rosette water sampler deployment to identify an appropriate site for another Multi-Corer deployment.

22.09.2012, Saturday

The entire day was spent with site surveying in order to identify an appropriate location for a Multi-Corer deployment in a water depth between 5000-6000 m. In the evening, while the site survey was continued, the scientific party and the crew came together to celebrate four birthdays.

23.09.2012, Monday

The evaluation of the site survey data revealed two promising sites at a water depth around 5500 m, which were sampled with the Multi-Corer during the day. At station GeoB 17012, only 2 cm sediment was recovered but sufficient overlying water for biological and rare earth element studies. The sediment sampled at this station is a dark reddish brown (5YR3/3)

homogenous diatom-bearing mud with a minor sand content. The recovery at station GeoB 17013 was lower (~0.5 cm) but again sufficient overlying water was collected. The sediment is dark reddish brown (5YR3/3) homogenous diatom-bearing mud with numerous manganese crusts and nodules (up to 2 cm in diameter). After finishing this station, we left the working area for the next CTD-Rosette water sampler deployment.

24.09.-29.09.2012, Tuesday-Saturday

While steaming further southeast to Suva (Fiji), the water column sampling was continued at stations GeoB 17014, 17015, 17016, 17017 and 17018. All CTD-Rosette water sampler deployments were successful and water for biological, rare earth element and isotopic studies has been sampled.

30.09-01.10.2012, Sunday-Monday

The RV SONNE continued sailing further southeast towards Suva (Fiji).

02.10.-03.10.2102, Tuesday-Wednesday

Today we reached our last scientific station (GeoB 17019) and most of the first day was spent with site surveying in order to identify an appropriate location for a Multi-Corer deployment in a water depth of around 3000 m. After another CTD-Rosette water sampler deployment, sediment and overlying water were sampled with a Multi-Corer. At station GeoB 17019, 32 cm sediment was recovered and sufficient overlying water for biological studies. The sediment sampled at this station is in upper 0-0.04 m a dark brown (7.5YR3/3) foram-nannofossil bearing volcanic ash. Below the ash-layer, the sediment is a strong brown (7.5YR5/6) foram-diatom bearing nannofossil ooze. After finishing the last station of the cruise, the Multi-Corer was demobilized.

04.10.-05.10.2012, Thursday-Friday

During these two days, the reefer was loaded with the first scientific equipment (Multi-Corer, Gravity Corer). The scientific groups started to prepare their equipments for shipping and all the labs were cleaned.

06.10.2012, Saturday

In the afternoon, the RV SONNE reached the port of Suva (Fiji).

07.10.2012, Sunday

On Sunday, the second container could not arrive the pier as scheduled, and the scientific party continued with final preparations for disembarking.

08.10.2012, Monday

The final day of the cruise was spent for loading the second container. The cruise participants disembarked in the afternoon and the expedition SO-223T (TransGeoBioOc) came to an end.

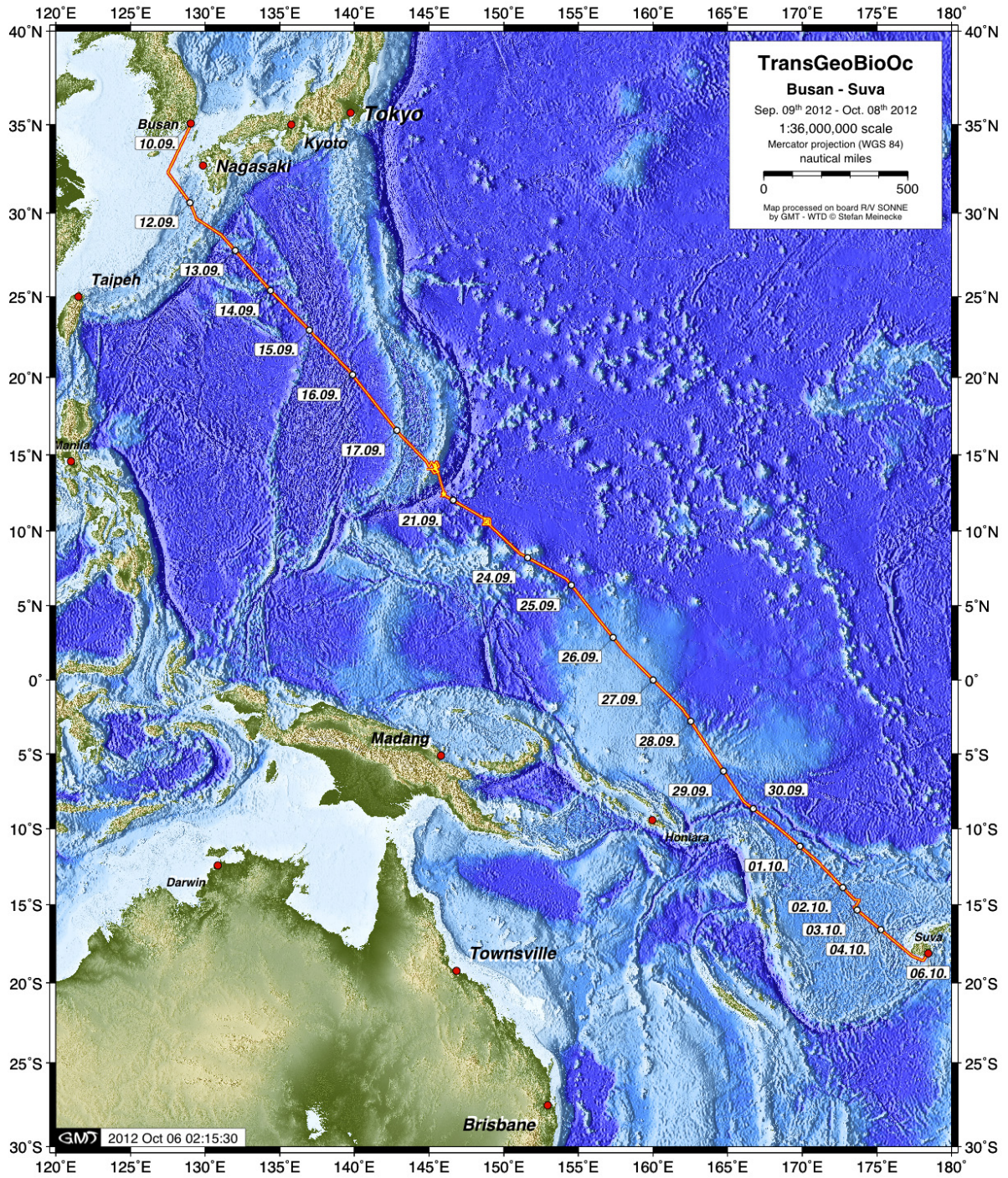


Fig. 3.1 Cruise plot of SO-223T.

4 CTD Profiling and Water Sampling

(Pahnke, Behrens, Meiners)

4.1 Instrumentation

A Seabird SBE 9plus CTD with sensors for the continuous measurement of conductivity, temperature, pressure and dissolved oxygen was used to obtain data on the physicochemical properties of the water columns (Fig. 4.1). This information was then used to define the sample depths using the CTD Niskin rosette.

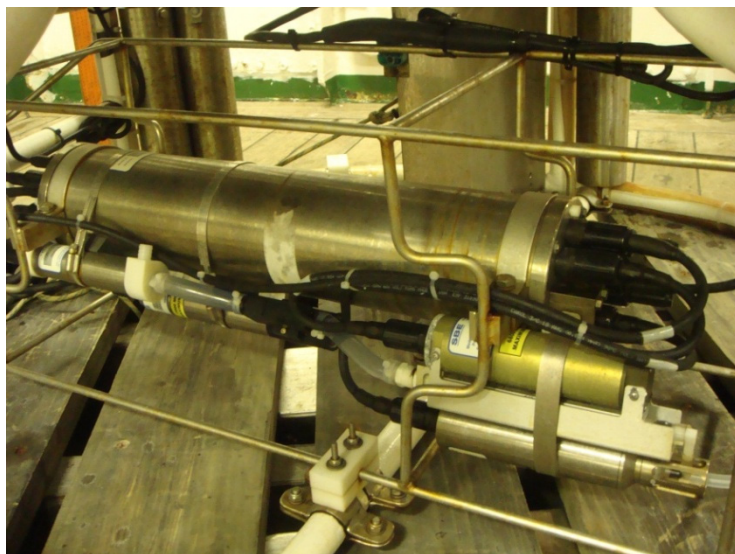


Fig. 4.1 Seabird SBE 9plus CTD with oxygen SBE 43 sensor.

The CTD was deployed with a SBE carousel water sampler (Fig. 4.2), which was equipped with 24 O.T.E. non-metallic free-flushing 10 Liter water sampling Niskin bottles with gray PVC sampler body, latex tubing spring closure, mounting blocks to attach to bottle stand adapter plates, release lanyards, Delrin drain valve and NBR70 (Acrylnitril-Butadien-Kautschuk) O-rings.

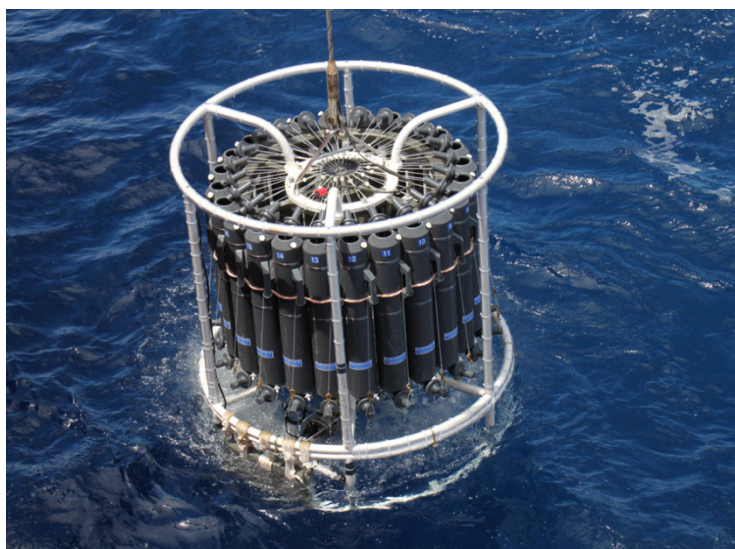


Fig. 4.2 Water sampling rosette with 24 x 10L Niskin bottles.

4.2 Water sampling

Depending on the water mass structure und bottom depth at the stations, up to 26 different water depths were sampled per CTD cast (Tab. 4.1). Additionally, surface water was collected using the ship's contamination-free seawater intake (~5 m water depth). Samples were collected for the analysis of Nd isotopes (5-15 L per sample), REE concentrations (250 ml per sample), trace elements (V, U, Tl, Re, Mo, Ba; 60 mL per sample), and nutrients (Si, nitrate, maybe phosphate; 20 mL per sample).

Tab. 4.1 CTD/Water sampling stations during cruise SO223T.

GeoB No.	Latitude [S]	Longitude [W]	Water Depth [m]	Instrument Depth [m]	Depth sampled [m]	Samples
17001-1	32°19,992'N	127°29,975'E	129	129	129-129-102-53-22	ICBM / UzK
17002-1	30°35,006'N	128°59,990'E	749	748,6	748,6-748,6-696-498-299-249-200-150-100-51-22	ICBM / UzK
17003-1	28°42,980'N	131°05,040'E	3357	3350	3350-3350-1988-1490-993-645-645-496-496-298-250-200-151-101-52-22-22	ICBM / UzK
17004-1	25°22,700'N	134°22,514'E	5339	5276	5276-5276-4977-4479-3980-3483-2985-2487-2000-1501-1004-800-651-303-101-62-22-22	ICBM / UzK
17005-1	20°26,004'N	139°36,977'E	6315	3000	3000-3000-2002-1500-998-751-500-300-201-101-101-61-61-22-22	ICBM / UzK
17011-1	10°37,800'N	148°53,998'E	5667	5574	5574-5574-5001-4502-4502-4002-3000-2502-2002-1500-1001-799-502-370-142-81-21-21	ICBM / UzK
17014-1	6°47,032'N	154°11,979'E	4583	4573	4573-4573-4500-4001-3800-3001-2501-2001-1501-1002-641-502-261-200-121-121-22-22	ICBM / UzK
17015-1	2°00,214'N	157°59,877'E	2695	893	893-602-320-241-200-180-130-130-101-80-80-60-50-40-40-20-20	ICBM / UzK
17016-1	0°0,002'N	160°0,001'E	2837	1003	1003-799-599-501-401-283-283-199-150-150-120-90-70-58-20-20	ICBM / UzK
17017-1	2°0,018'S	162°0,042'E	3162	3082	3082-3082-2998-2000-1004-840-701-701-550-300-200-149-149-119-100-80-41-41	ICBM / UzK
17018-1	8°11,927'S	166°5,016'E	4623	4500	4500-4500-4400-4002-3403-3100-2501-2000-1502-1002-800-720-320-200-150-41-21	ICBM / UzK
17019-1	15°13,021'S	173°31,122'E	2784	2772	2772-2772-2600-1802-1302-1002-800-700-550-410-200-120-41-20-20	ICBM / UzK

4.3 Suspended particle and porewater sampling

Suspended particles from 5m water depth were collected upon leaving each station using the ship's contamination-free seawater intake. A volume of 200-500 L of seawater was passed through a Millipore cellulose filter (0.4 μm pore size, 140 mm diameter, 2-3 L/min) that was placed on a Geotech all-PVC/PP filter holder (Fig. 4.3).

From 7 Multi-Corer (MUC) casts, one large tube (\varnothing 10 cm, 60 cm long) each was sampled for the overlying water (1-2.5 L) (Fig. 4.3), porewater (up to 40 ml from every 5 cm) and sediments (Tab. 4.2). The porewater samples were collected using 5 cm-long Rhizons that consist of a porous polymer tube with a typical pore diameter of 0.1 μm that is extended with an apolyvinyl chloride tube (Fig. 4.3). Samples were transferred to acid-cleaned HDPE sample tubes for future analysis of REE concentrations.



Fig. 4.3 Sampling of suspended particles (top left), sediments (top right), overlying MUC-water (bottom left), and porewater using Rhizons (bottom right).

Tab. 4.2 Multi-Corer sampling for porewater and overlying water during cruise SO223T.

GeoB No.	Latitude	Longitude	Water Depth [m]	Tubes		Overlying water		Pore-water	Sediment
				∅ 10cm	∅ 5cm	pH 2	C18 cartridge	pH 2	Total (cm)
17004-2	25°22,7'N	134°22,52'E	5339	1		1L		120ml	0-11
17006-2	14°3,7'N	144°3.2'E	1255	1	1	2.3L		120ml	0-15, 0-10
17008-1	14°5,6'N	145°23,16'E	1895	1					0-16
17009-1	13°58,6'N	145°30,72'E	2686	1		2.5L		120ml	0-14
17012-1	10°37,8'N	148°37,8'E	5719	1			2L		
17013-1	10°34,3'N	148°49,0'E	5497	1			2L		
17019-2	15°13,0'S	173°31,1'E	2776	1		1.5L		240ml	0-27

4.4 Sample processing

The water was filtered directly from the Niskin bottles (or the seawater tap in the lab) through AcroPak500 cartridges (0.8/0.2 µm pore size) into acid-cleaned LDPE containers using Teflon-lined Tygon tubing and PP fittings (Fig. 4.4). A laminar flow bench in the wet lab onboard R/V SONNE was extended with plastic sheets to create a semi-clean (low particle) environment for sample processing (acidification, pre-concentration). In order to pre-concentrate the REEs from seawater for Nd isotope analyses, all large-volume samples (5-15 L) were acidified to a pH of 3.5 and passed through Sep-Pak C18 cartridges (Waters Inc.) that were preloaded with a complexing agent (300 mg of phosphoric acid 2-ethylhexyl ester), using a peristaltic pump (20 ml/min) (Fig. 4.4).

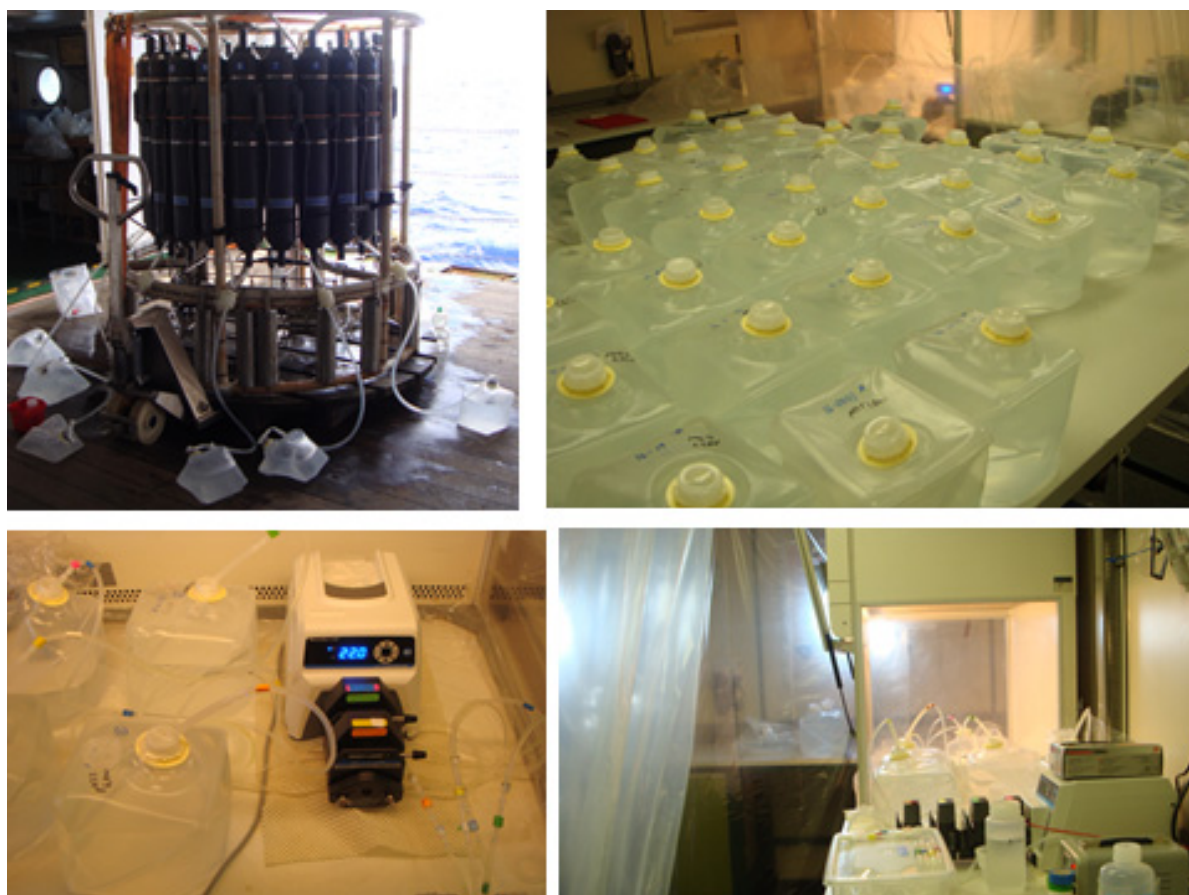


Fig. 4.4 Sampling and filtration of seawater from Niskin bottles (top left) and pre-concentration of REEs (bottom left). Top right and bottom right: 5 L samples and clean-room bubble with pumps.

The REE and trace metal samples were acidified to a pH of 2 and stored at room temperature. The nutrient samples were poisoned with 3.5% mercury chloride and stored at 4°C. All particle filters were folded, placed into plastic sample bags and stored at -32°C.

Porewater samples (≤ 40 ml) for REE analysis were acidified to a pH of 2 and stored in acid-cleaned HDPE tubes.

The MUC-overlying water samples were filtered through an AcroPak500 cartridge (0.8/0.2 μm pore size; GeoB 17004-2, GeoB 17006-2, GeoB 17009-1, GeoB 17019-2), or were passed through a Millipore cellulose filter (0.4 μm pore size, 140 mm diameter, gravity filtration) because of high particle concentrations in the water (GeoB 17012-1, GeoB 17013-1). The overlying water from Stations GeoB 17006-2 and GeoB 17009-1 was clear, while the water from GeoB 17004-2 had high suspended particle concentrations most likely due to disturbance of the sediment surface during recovery of the MUC. At Stations GeoB 17012-1 and GeoB 17013-1, high particle concentrations in the overlying water were most likely caused *in situ* through resuspension of sediment particles at the seafloor, because the cored sediment surface was undisturbed.

MUC sediments were sampled at 1cm intervals using plastic spatulas, placed into plastic sample bags, and stored at 4°C for future analysis of Nd isotopes and REE concentrations in the authigenic Fe-Mn oxide fraction, foraminifera, and/or fish teeth.

5 Sub-bottom Profiler, Swath Bathymetry Sounder

(Mohtadi, Arndt, Klann, Nitsche, Steinke)

During the SO-223T cruise, two different echosounders were operated to provide high resolution information on the uppermost 50-100 m of sediment and to gain detailed insight in the local bathymetry. The hull mounted parametric sub-bottom profiler Parasound DS3 (Atlas Hydrographic) works as a narrow beam sediment echosounder, providing primary frequencies of 18 (PHF) and adjustable 18.5 – 24 kHz, thus generating parametric secondary frequencies in the range of 0.5 – 6 kHz (SLF) and 36.5 – 42 kHz (SHF) respectively. The secondary frequencies develop through nonlinear acoustic interaction of the primary waves at high signal amplitudes emitted by a transducer array of 128 transducers on a rectangular plate of approximately 1 m² in size. The wave interaction takes place only in the emission cone of the high frequency primary signals which is limited to an aperture angle of only 4° for the Parasound DS3. Therefore the footprint size is only 7% of the water depth and vertical and lateral resolution is significantly improved compared to conventional 3.5 kHz echosounder systems. The Parasound DS3 is an improvement of the former Parasound DS2 (Atlas Elektronik) and is installed on RV SONNE since 2008. The fully digital system provides important features like recording of the 18 kHz primary signal and both secondary frequencies, continuous recording of the whole water column, beam steering, different types of source signals (continuous wave, chirp, barker coded) and signal shaping. However, many of the new features are still in an experimental state. Data is digitized at a sample frequency of 96 kHz to evade aliasing effects for the high secondary frequency. A downmixing algorithm in the frequency domain is used to reduce the amount of data and allow data distribution over Ethernet.

For the standard operation a parametric frequency of 4 kHz and a sinusoidal source wavelet of 1 period were chosen to provide a good relation between signal penetration and vertical resolution. The 18 kHz primary signal and the 40 kHz parametric signal were also recorded permanently. On most lines the system was operated in the quasi-equidistant mode. This mode provides an optimal lateral coverage of the sea floor, since the echosounder calculates an intertwined trigger sequence using the 'unused' travel time of the signal in the water to emit additional pulses in a matter, which generates an equally spaced transmit/receive sequence with at least twice the rate of a standard send-receive-send-sequence. In this mode, usually a depth window of 200-600 m was recorded in all signal frequencies. On selected profiles, for instance in vicinity of coring sites and water sampling sites the system was operated in the single pulse mode, which allow recording of the full water column and therefore provides insight in the particle concentration in the water column, especially for the higher signal frequencies.

The system worked with exceptional stability for the whole cruise period. This stability in conjunction with the automated watch keeping mode allowed a significant reduction of watch keeping times. The data quality is very high.

As the seismic data the Parasound data was loaded into the commercial seismic interpretation system Kingdom Suite (Seismic Micro) and therefore provided a very fast and valuable means to quickly get a first impression of the uppermost 50–80 m of sediments.

Swath bathymetry was carried out along all profiles with the hull mounted Simrad EM120 (Kongsberg). The EM120 operates at a frequency of 12 kHz and provides 191 beams and a maximum swath angle of 128. To calibrate the depth determination algorithms in each survey area a deep CTD station was performed to provide a regional water sound velocity profile. The EM120 worked absolutely reliably throughout the cruise and provided a very high data quality.

6 Sediment Sampling

(Mohtadi, Klann, Steinke)

6.1 Multi-Corer

The main tool for the sampling of undisturbed surface sediments and overlaying water for biodiversity studies (working group Arndt) was the Multi-Corer (MUC) equipped with six large (diameter of 10 cm) and four smaller (diameter of 6 cm) plastic tubes of 60 cm length. During the SO-223T cruise, 10 Multi-Corers have been deployed (Tab. 6.1). The maximum recovery was 43 cm of undisturbed surface sediment. Different from being outlined in the working plan of the cruise proposal, no gravity corer has been deployed during cruise SO-223T. The composition of sediments around the Island of Rota allowed no gravity coring (see 12.2).



Fig. 6.1 Undisturbed sediment surface in Multi-Corer tubes taken during SO-223T cruise

Table 6.1 Multi-Corer sampling and sub-sampling during R/V SONNE Cruise SO-223T

GeoB No.	Latitude	Longitude	Water Depth [m]	Large tubes (10 cm diameter)						Small tubes (6 cm)				Core length [cm]	
				#1	#2	#3	#4	#5	#6	#1	#2	#3	#4		
17004-2	25°22,700'N	134°22,519'E	5339	Gc	PF	PF	AR	AR	AR	AR	AR	AR	AR	AR	43
17006-1	14°03,717'N	144°58,779'E	1253	-/-	-/-	-/-	-/-	-/-	-/-	-/-	-/-	-/-	-/-	-/-	empty
17006-2	14°03,699'N	144°03,699'E	1259	Gc	PF	PF	AR	AR	AR	AR	AR	AR	Gc	19	
17007-1	14°04,320'N	145°20,592'E	1829	PF	PF	-/-	-/-	-/-	-/-	AR	AR	-/-	-/-	19	
17008-1	14°05,613'N	145°23,191'E	1895	PF	PF	AR	-/-	-/-	-/-	Gc	AR	-/-	-/-	19	
17009-1	13°58,640'N	145°30,719'E	2687	Gc	PF	PF	AR	-/-	-/-	AR	AR	AR	AR	17	
17010-1	14°24,252'N	145°25,420'E	1745	-/-	-/-	-/-	-/-	-/-	-/-	-/-	-/-	-/-	-/-	empty	
17012-1	10°37,799'N	148°37,800'E	5719	AR	AR	-/-	-/-	-/-	-/-	AR	-/-	-/-	-/-	2	
17013-1	10°34,313'N	148°49,032'E	5497	AR	AR	AR	AR	AR	AR	-/-	-/-	-/-	-/-	0.5	
17019-2	15°13,023'S	173°31,129'E	2776	Gc	PF	PF	AR	AR	-/-	AR	AR	-/-	-/-	32	

PF	Planktic foraminifera	MARUM
Gc	Geochemistry	ICBM
AR	Archive	MARUM

6.2 Sub-sampling of the Multi-Corer

Depending on the availability of filled tubes and overlaying water, the following sampling scheme for the Multi-Corer tubes was applied:

- 3 large tubes cut into 1 cm thick slices for planktic foraminiferal investigations (MARUM)
- 2 small tubes cut into 1 cm thick slices for sedimentological analysis (MARUM)
- 1 large tube with small openings for pore water analysis (ICBM)
- 4 small tubes cut into 1 cm thick slices for the archive (MARUM)
- 10 tubes: “fluffy” surface layer for biological studies (UzK)
- 10 tubes: overlaying water for biological studies (UzK)

6.3 Sediment classification

The sediment classification largely follows ODP/IODP convention. Lithological names consist of a principal name based on composition, degree of lithification, and/or texture as determined from visual description and microscopic observations. The color of the sediments was determined by comparison with the Munsell soil color chart. Smear slide analyses were applied to evaluate the mineralogy, components (form, size) and the presence of microfossils.

7 Counting, Isolation and Cultivation of Protists from Water and Sediment Samples

(Arndt, Nitsche, Schoenle)

7.1 Sediment samples

Quantitative benthos samples were collected using the Multi-Corer system (diameter of an individual core either 100 mm or 60 mm). Nearly undisturbed sediment and overlaying water were used for the analysis. With this sampling method, contamination by organisms or cysts from other water layers could be reduced to a minimum. Once on deck, corers were immediately investigated. Samples were taken from the overlaying water as well as from the upper 2 mm sediment layer by means of a sterile syringe. In addition, hard substrates (about 0.2-0.5 cm³) were incubated for cultivation. Immediately after sampling, one set of sediment subsamples was filtered on 0.8 µm filters which were transferred to 50% ethanol and stored at 4°C for later molecular biological studies of nanoprotists. Another set of sediment subsamples was fixed with formaldehyde, stained with DAPI (fluorescent dye) and filtered on 0.8 µm membrane filters for later epifluorescence counts of nanofauna.

For additional quantitative estimates, two methods were used: live-counting of untreated samples and cultivation of defined aliquots of the sample (liquid aliquot method = LAM). The direct counts served as an estimate of deep-sea protistan abundance and were carried out within a few minutes after sampling in a miniaturized version of a Sedgewick-Rafter chamber (area about 10 mm x 25 mm, height 0.2 mm) filled by a calibrated micropipette. Inspections and counting of 5-20 µL subsamples of the sediment suspension were done using upright microscopes (Zeiss Axiostar, Zeiss Axioskop 50). The liquid aliquot method served as an estimate of the abundance of cultivable nanoprotists. Subsamples of a few milliliters of the sediment suspension were added into 50 ml tissue culture flasks. In addition, 500 ml aliquots of the overlaying water were incubated in tissue-culture flasks. All cultures were supplied with sterilized quinoa grains. Culture flasks and plates were incubated at 20°C; inspections were carried out using inverted microscopes (Motic, 200-400x magnification) every 3-4 days. The number of culture vessels containing a certain species allowed an estimate of the abundance of cultivable active organisms/cysts. Additional subsamples were fixed for later electron-microscopical preparations or molecular studies.

7.2 Plankton samples

For the analysis of molecular diversity of protists in surface waters, water samples from the station GeoB 17004 and GeoB 17011 were filtered and preserved (see above) for later studies at the laboratory of UzK. In addition, water samples from surface and bottom waters were collected and investigated regarding the structure of cultivable protist communities and to isolate unknown species of protists. The procedures followed the protocol of benthic samples (see above). 10 μm net samples were used to enrich potentially occurring acanthoecid choanoflagellates. Subsamples were cultivated; another part was fixed and filtered for later electron-microscopic studies.



Fig. 7.1 Collection and preparation of samples from overlaying water and sediment surface of Multi-Core samples for the analysis of deep-sea nanofauna

8 Collection and Cultivation of Rainwater

(Arndt, Nitsche, Schoenle)

Rainwater was collected at four dates in the tropical West Pacific. Sterile Petri dishes were exposed in the rain until 10-15 ml per dish was collected. Organic substrate was added and subcultures were transferred to marine and freshwater medium and analyzed every 3 days under an inverted microscope.

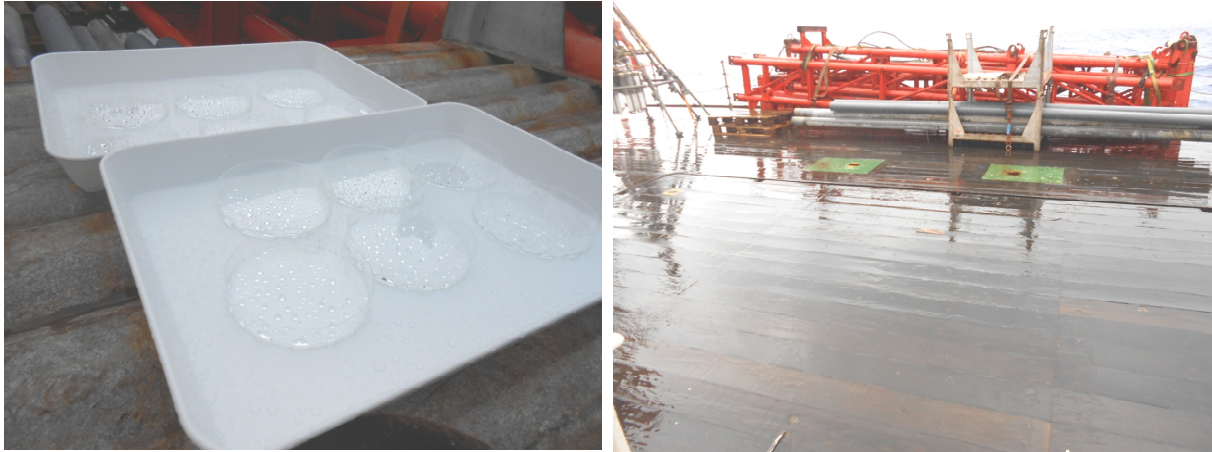


Fig. 8.1 Rainwater collection of protozoan cysts to analyze aeroplankton.

9 Experiments on Pressure Tolerance of Deep-sea Protists

(Arndt, Nitsche, Schoenle)

Experiments were carried out onboard to investigate survival and reproduction of nanofauna exposed to various hydrostatic pressures. A pressure generating system was established based on a pneumo-hydraulic pressure intensifier with a transfer of 1:400 atm (Fig. 9.1). Three different pressures were established 150bar, 300 bars and 500 bars. Incubations included either a) deep-sea sediment (GeoB 17004-2) exposed immediately after sampling or b) deep-sea nanofauna cultures isolated during the cruise. Isolates were pre-cultivated in 50 ml tissue culture flasks. Experiments were run for 7 or 4 days at 7°C. Aliquots of sediments or cultures were filled into 200 μ l PCR tubes. Either 6 or 5 replicates were exposed to the different pressures. Control samples were exposed at the same temperature at 1bar. Several 5-10 μ l subsamples of each tube were counted under a light microscope and the beginning and at the end of experiments.



Fig. 9.1 Pressure generating system to expose deep-sea nanofauna at different hydrostatic pressure.

10 Sunphotometer Microtops II

(Marschall)

With the handheld sun photometer Microtops II, the direct solar radiation of five different wavelengths was measured (440, 500, 675, 870 and 936 nm). With the data and the exact height of the sun, the aerosol optical depth (AOD) can be calculated.

A handheld GPS is connected to the Microtops II for simultaneous logging of location and time of the measurements. Absolutely clear blue sky in the direction of the sun is needed for the measurements. The photometer has to be orientated towards the sun and the radiation is scanned six to ten times in succession. This series builds one measurement.

The measurements took place on all sunny days when the sun stood at least 15 degrees above the horizon and if possible the measurements were taken every 15 minutes. Measuring days were September 11, 12, 13, 17, 19, 22, 23, 26, 29 and 30 and October 1, 2, 3.

All data was sent to the Maritime Aerosol Network (MAN).



Fig.10.1 Sun photometer and GPS

11 Optical Disdrometer

(Marschall)

The optical disdrometer from Eigenbrodt is an electronic instrument for measuring precipitation. An infrared diode illuminates the measurement cylinder. The receiver on the opposite side measures the incoming signal as voltage. With a drop in the measurement cylinder the voltage decreases, and with the difference between the reference voltage and the measured voltage the area of the cross-section of the drop is calculated.

Wind speed is measured with an anemometer and used to calculate the air-volume that streams through the measurement cylinder per unit of time. This information is required for the calculation of the quantity of precipitation.

The measured data was saved on a computer and will be processed in Germany.

The disdrometer was installed on deck in a standby mode and turned itself on automatically when precipitation occurred and recorded all rain events during the SO-223T cruise.

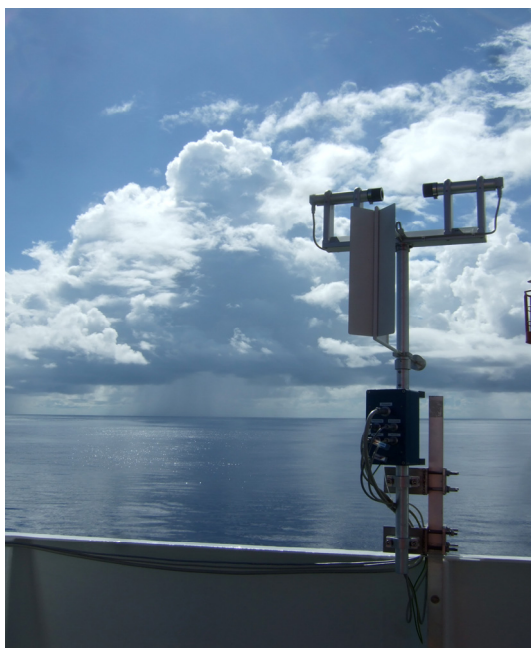


Fig.11.1 Optical disdrometer, anemometer and rain sensor installed on deck.

12 Shipboard Results

12.1 Site survey

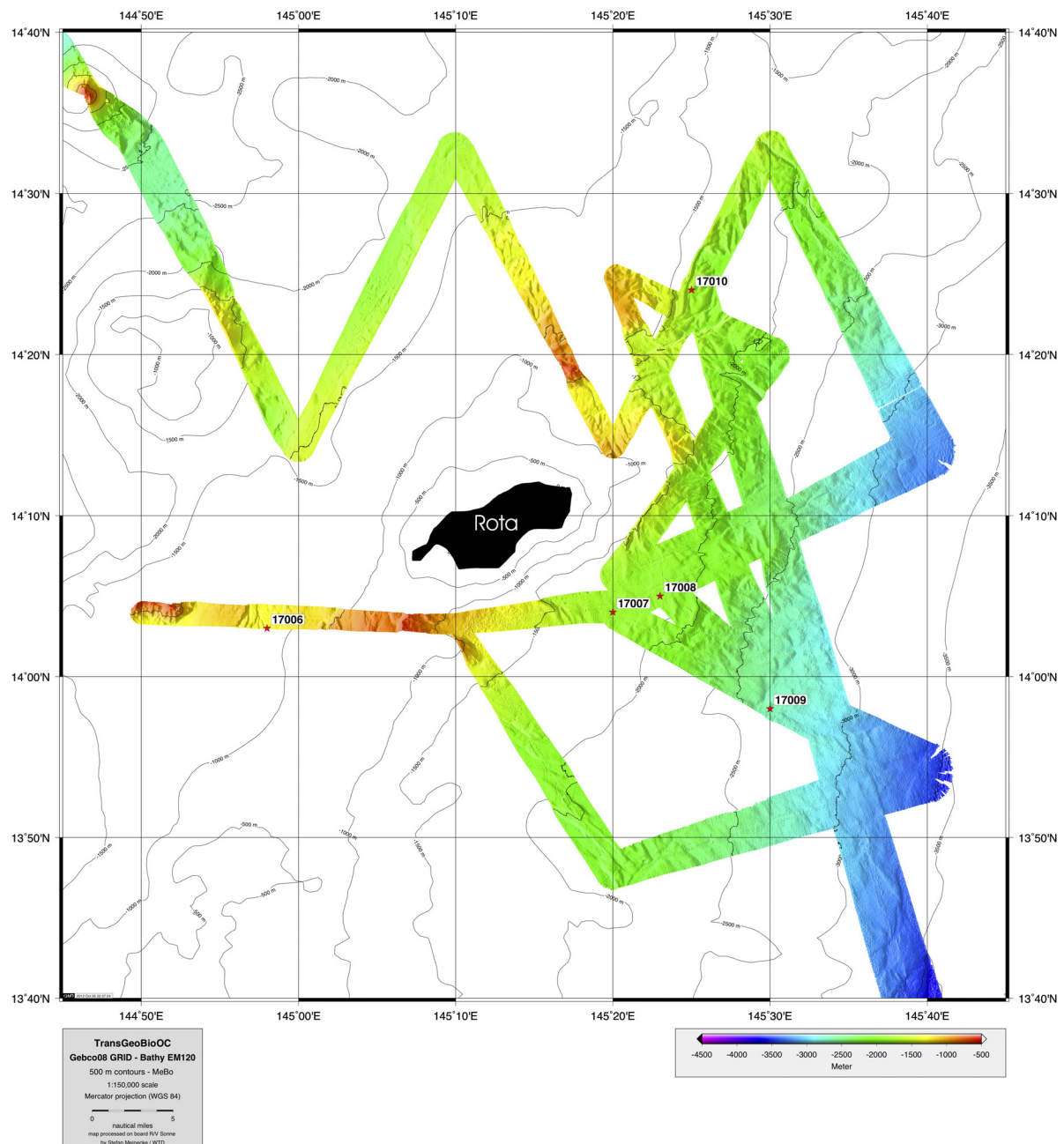


Fig. 12.1 Bathymetry map around Rota Island.

Figure 12.1 shows the stack of the site surveys around Rota Island between 14°40' N and 13°40' N, and 144°50' E and 145°50' E, thereby covering a depth range of approx. 550 to 3500 m. The bathymetry map together with Parasound records along different profiles show a more undulating morphology of the seafloor. Particularly the area north off Rota Island is characterized by the outcrop of steep, high amplitude, and reflection-free seafloor. The irregular rough surface with pinnacles of variable height from few to tens of meters indicated non-deposition or erosion of sediments in this area. In order to access undisturbed sediments at the highest sedimentation rate, GeoB sites 17006 to 17010 were selected from southwestern (GeoB 17006), southeastern (GeoB 17007-09), and northeastern (GeoB

17010) slopes. Parasound profiles indicated an upper well-stratified sedimentation environment around and at these sites (Figs. 12.2 – 12.4), with a signal penetration of up to 40 mbsf for the 4 kHz signal based on a sound velocity of 1500 m/s.

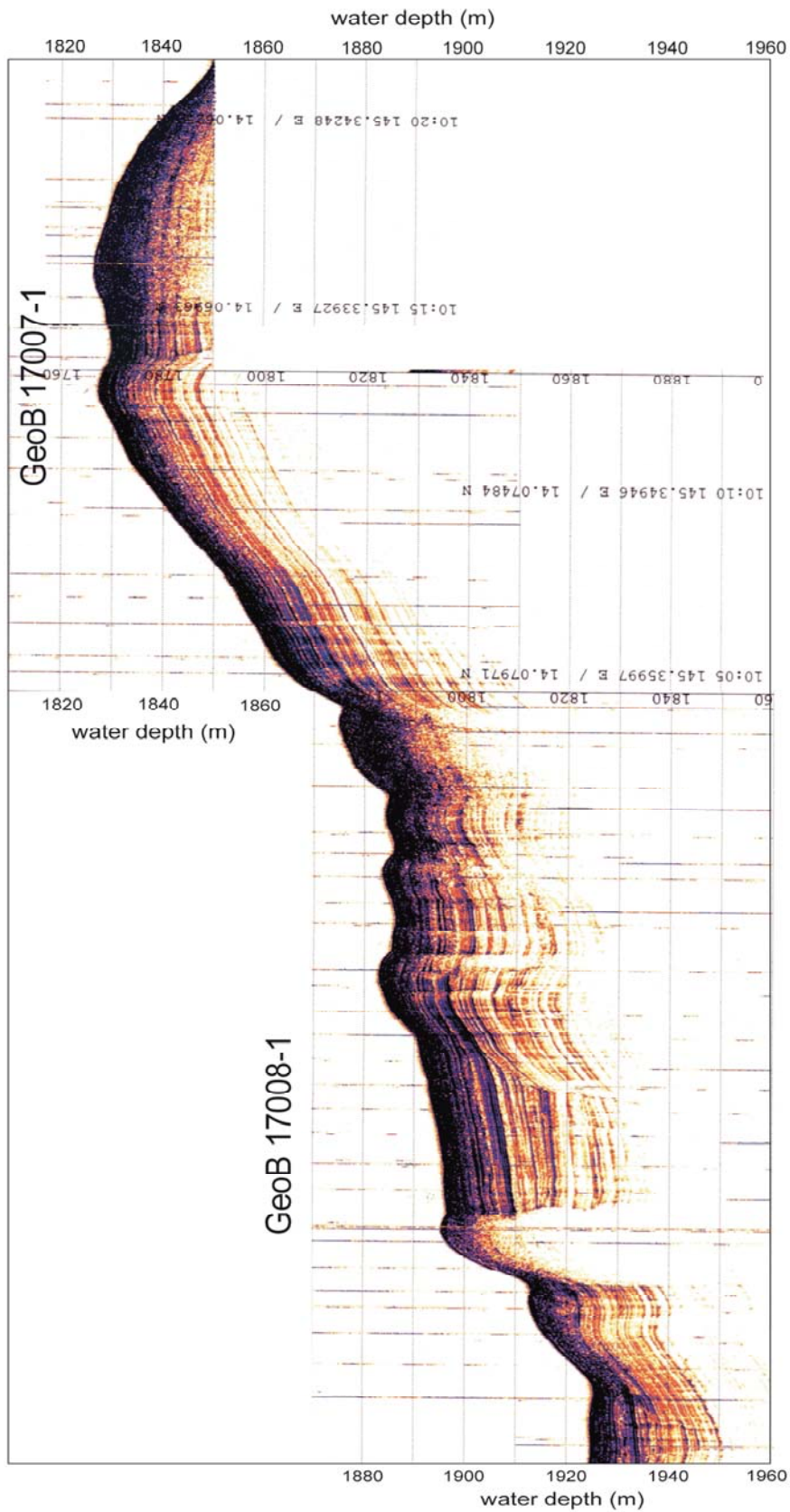


Fig. 12.2 Parasound record showing the GeoB sites 17007-1 and 17008-1 (over approx. 9 km).

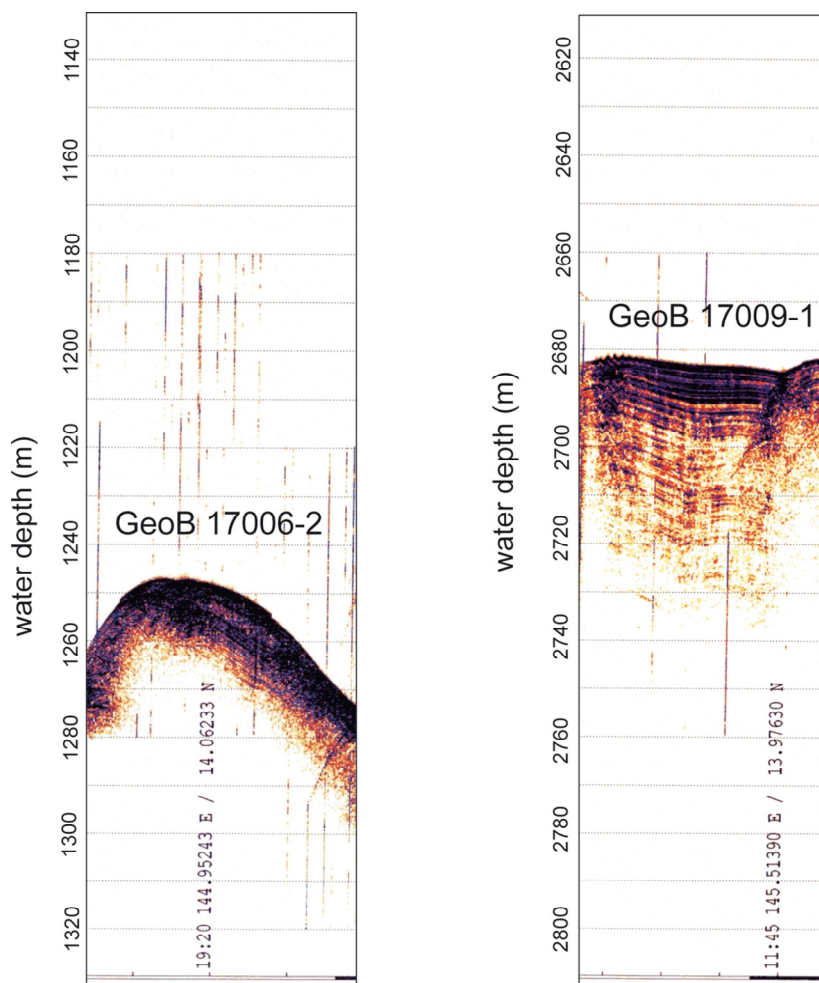


Fig. 12.3 Parasound record showing the GeoB sites 17006-2 and 17009-1 (over approx. 1.5 km).

The acoustic survey of the near surface sediments at all these stations showed a succession of finely laminated sediments onlap the acoustic basement. However, except for GeoB 17010, the near surface sediments were characterized by rather strong reflectors that turned out to consist of sandy constituents, mainly of planktic foraminifera and volcanic glass. Still, the sediment composition at GeoB site 17010 was nearly identical to the other sites thus indicating either very low sedimentation rates around Rota Island or, rather unlikely, sediment removal over 3000 m of water depth. To this end, we interpret the sedimentary setting in this area being controlled by various factors, among others negligible terrigenous input from the surrounding small Northern Marianna Islands (including Rota), low marine production and hence, low marine snow, and a steep morphology that facilitates the downslope transport of non-consolidated sediments into the trench.

South of the Marianna Trench between 12°55' N and 12°15' N, and 145°45' E and 146°15' E, sediment and bathymetric surveys showed a very steep seafloor ranging between 4500 and 10,300 m (Fig. 12.5). Wherever possible, Parasound records showed a rugged and almost sediment-free basement, again indicating either a non-deposition environment or a complete removal of the sediment cover towards abyssal depths.

Parasound and bathymetric surveys of the other two study areas north of the Okinawa Trench (not shown) and on the Fiji Plateau (Fig. 12.6) revealed nearly identical characteristics of a rugged and undulated seafloor. However, a less steep morphology compared to those around Rota Island and the Southern Marianna Trench allows here for lateral variations in depot centers besides sections of non-deposition or erosion.

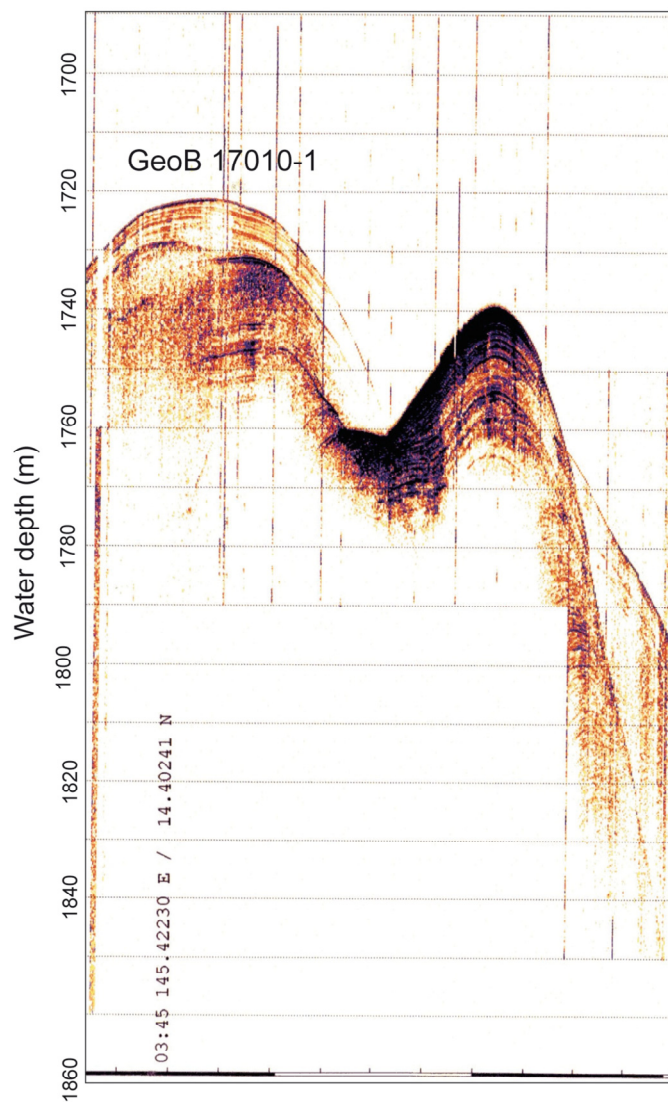


Fig. 12.4 Parasound record showing the GeoB site 17010-1 (over approx. 3 km).

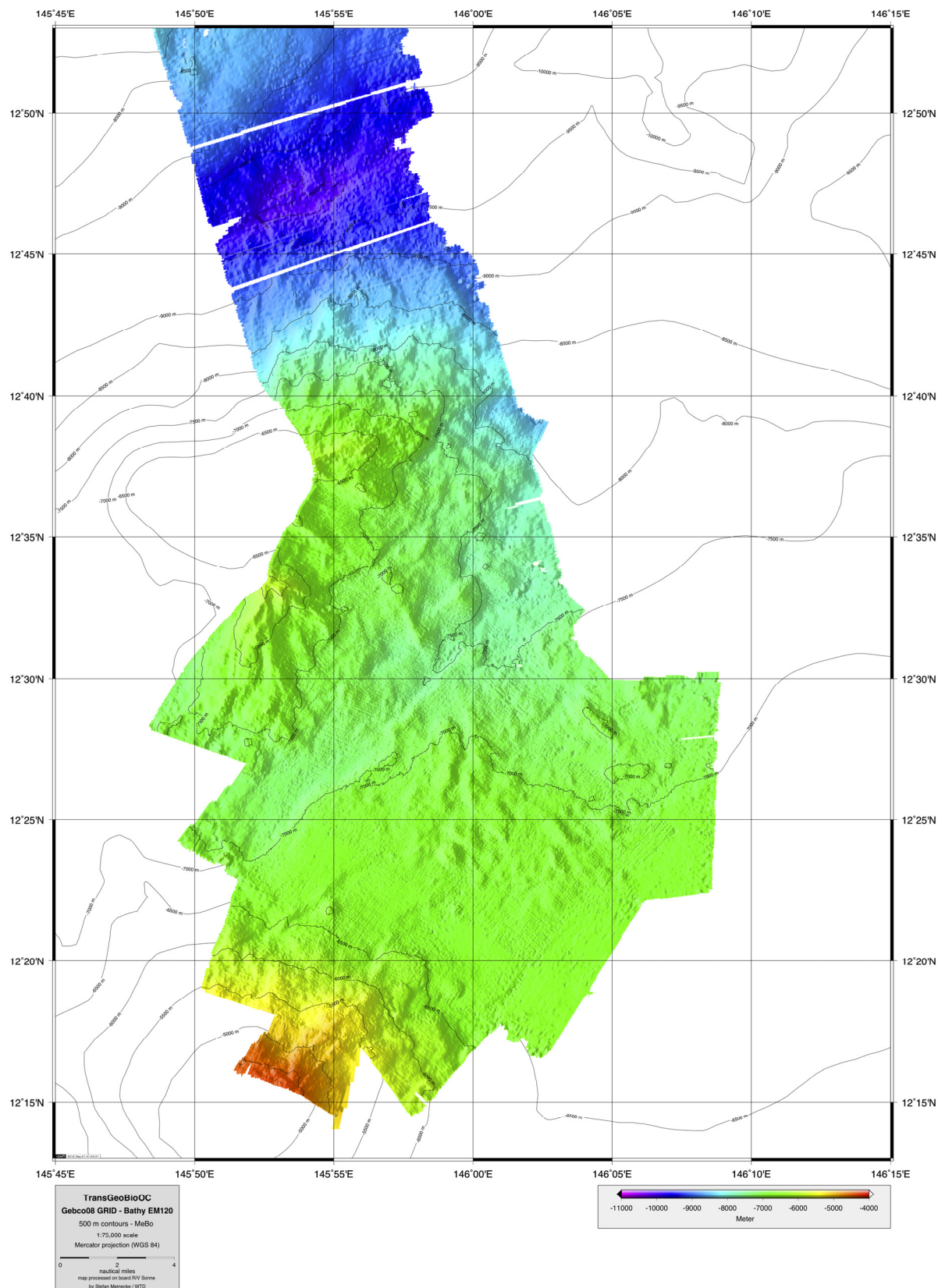


Fig. 12.5 Bathymetry map of the southern Marianna Trench.

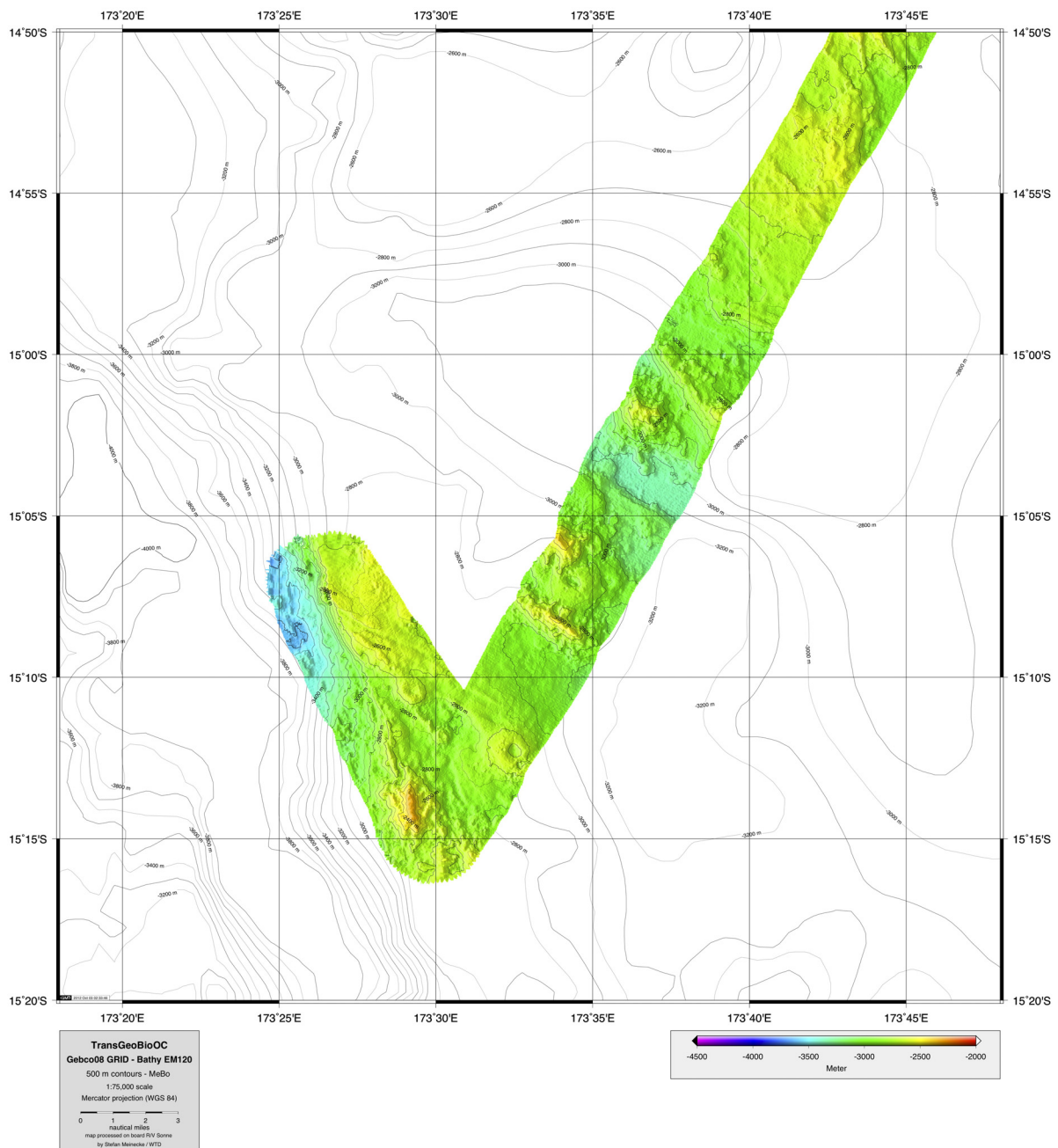


Fig. 12.6 Bathymetry map of the Fiji Plateau.

12.2 Sediments

Station GeoB 17004-2

The Multi-Corer consisted of ~0.06-0.43 m dark reddish brown (5YR3/3) homogenous clay with no planktonic and benthic foraminifera. Diatoms and radiolarians are abundant.

Stations GeoB 17006-2, 17007-1, 17008-1, 17009-1

The sediment recovered near the Island of Rota is a light yellowish brown (10YR6/4) foraminiferal ooze. The recovery varied between ~0.07-0.19 m. The planktonic foraminiferal assemblage mainly consists of *G. ruber*, *G. sacculifer*, *G. menardii*, *G. conglobatus*, *O.*

univera, *G. siphonifera* and *S. dehiscens*. Benthic foraminifera are abundant. Glass shards showing a range of shape from vesicular pumice to glass fragments containing abundant pipe vesicles are very common. Multi-Corers GeoB 17006-1 and GeoB 17010-1 were empty. Due to the composition of the sediments around the Island of Rota, no gravity corers were deployed.

Station GeoB 17012-1

At station GeoB 17012-1, only 0.02 m sediment was recovered. The sediment collected at this station is a dark reddish brown (5YR3/3) homogenous diatom-bearing mud with a minor sand content. The sand-sized fraction is composed of manganese nodules. Dark reddish brown clayey clasts have been found at the sediment surface.

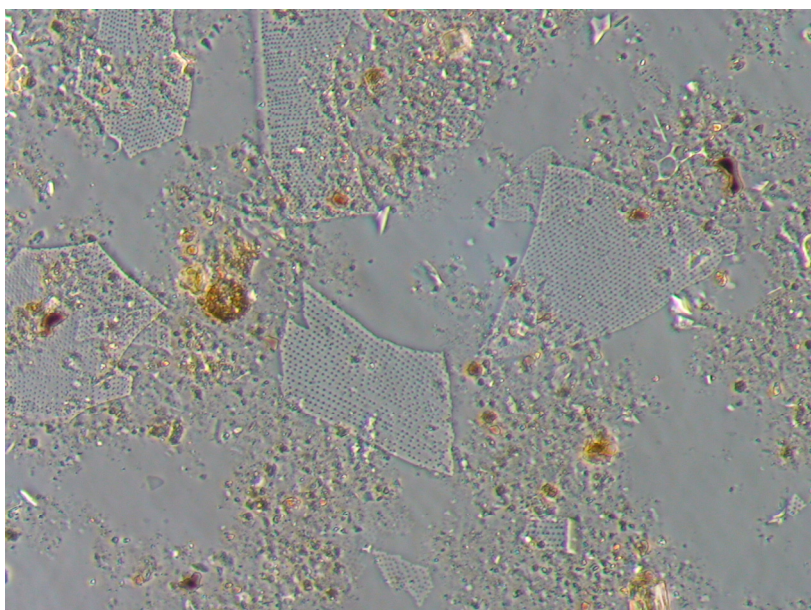


Fig. 12.7 Diatom-bearing mud recovered at station GeoB 17012-1 (magnification 20)

Station GeoB 17013-1

The Multi-Corer (GeoB 17013-1) deployed at this station consisted of ~0.05 m dark reddish brown (5YR3/3) homogenous diatom-bearing mud with numerous manganese crusts and nodules (up to 2 cm in diameter). Other abundant microfossils are radiolarians.

Station GeoB 17019-2

At station GeoB 17019-1, 0.32 m sediment was recovered. The upper 0-0.04 m of Multi-Corer (GeoB 17019-1) is a dark brown (7.5YR3/3) foram-nannofossil bearing volcanic ash (0-0.04 m). Below the ash-layer, (0.04-0.32 m), the sediment is a strong brown (7.5YR5/6) foram-diatom bearing nannofossil ooze.

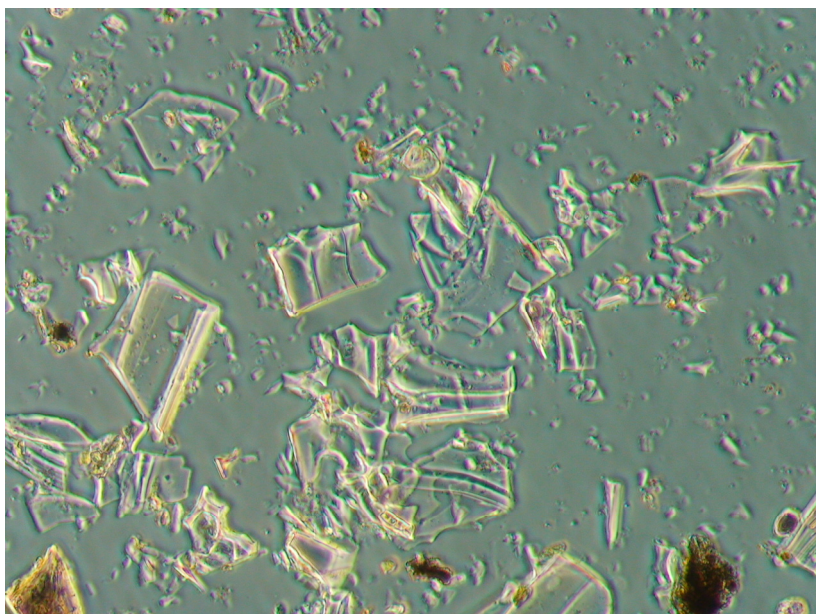


Fig. 12.8 Foram-nannofossil bearing volcanic ash recovered at station GeoB 17019-2 (magnification 20).

12.3 Counting, isolation and cultivation of protists

As a preliminary result, the following genera of cultivable heterotrophic flagellate taxa have been recorded from the North-West Pacific deep-sea basins ($\geq 5,000$ m depth): *Ancyromonas*, *Bodo*, *Caecitellus*, *Cafeteria*, *Cercomonas*, *Neobodo*, *Percolomonas*, *Pseudobodo*, *Rhynchomonas*, *Salpingoeca* and *Spumella*. We found several species which have to be further studied in detail including some potentially new species. In addition, ciliates could be recorded from different depths.

Preliminary direct counts revealed 1-2 nanoprotists per cm^2 . The qualitative and quantitative studies complemented to our earlier cultivation based studies of deep-sea sediments in the Southern Atlantic and Mediterranean. Abundance estimates were in the same range as those obtained from the South-Atlantic abyssal plains and they were significantly lower than estimates from Mediterranean deep-sea basins.

Preliminary results of our study may be summarized as follows: A) Abundances determined by direct counts were very low, though comparable with earlier studies of the ultra-oligotrophic Southern Atlantic deep-sea basins. B) Abundance estimates of cultivable species in the two Pacific deep-sea basins were relatively similar to those obtained for the deep-sea basins of the Southern Atlantic (Me 63/2, Me 79/1). C) Even among the cultivable protists new species were recorded indicating that we just begin to understand the nanofauna diversity of the deep sea. D) There seems to exist an enrichment of nanofauna on hard substrates compared to the surrounding soft bottom. The importance of these substrates (during the present cruise, substrates were of volcanic origin) has largely been ignored in the past. Hard substrates seem to form distinct habitats and seem to form some kind of “hot spots” of microbial life in the oligotrophic deep sea. This deserves much more detailed studies in the future. Previous studies showed that morphotypes of protist taxa which we also found during the present cruise consist of a large number of hidden genotypes. To test this hypothesis, clonal cultures of different nanoprotist species from the Pacific deep sea were established onboard and will be transported to Cologne to be characterized by molecular techniques.

In addition to life counts and liquid aliquot cultivation techniques, sediment samples were collected for subsequent molecular biological studies in Cologne (fixed with ethanol). Our aim is to establish a clone library of heterotrophic flagellates from the deep-sea sediments to analyze the genotype diversity independent from the cultivation approach in comparison to our records of cultivable nanoprotists and life counts from the deep sea. We expect new

genotypes that do not appear in surface waters and will probably never appear in cultures. The cultivated strains will serve as a valuable qualitative test for the established clone library. The combination of different methods offers a unique possibility to receive detailed information on nanofauna life in the abyssal plains of the Pacific. In addition, we exposed sediment subsamples to deep-sea pressure conditions immediately after sampling, to check whether specifically deep-sea adapted strains might grow under high pressure. The exposed sediment did not contain enough protists so that quantification of potential growth was not possible. However, we were able to investigate the influence of pressure on single isolates of nanofauna. We tested the effects of pressure incubations on the bicosoecids *Cafeteria*, and *Caecitellus* as well as on *Neobodo* and a small ciliate. Preliminary studies revealed a survival of some of the isolates from different depths up to a pressure of 550 bars.

The sample collected from rain water revealed cysts of marine as well as freshwater protists. The number of cysts was very high and ranged between 0.1 and 0.4 cysts per ml rainwater. The taxonomic diversity of organisms hatching from cysts was very. We observed bicosoecids, chryomonads, bodonids, cercomonads and other Rhizaria groups, vahlkampfiid amoebae and lobose amoebae, as well as ciliates.

There seems to exist a worldwide exchange between nanoprotozoan populations that includes also deep-sea ecosystems. This feature of nanofauna seems to be extraordinary compared to other deep-sea animals and is connected with their small size, their ability to survive unpleasant conditions (e.g. scarcity of food) in cysts (diameter 2-8 μm) which can be distributed by water and air, and with their ability to grow as fast as bacteria, when food conditions are temporally or locally enriched (e.g. by sedimented organic debris). Our comparative study of clone libraries from the Atlantic and Pacific will help us to address ideas of global distribution patterns of deep-sea nanofauna.

Our recent molecular findings challenge the idea that abyssal sea floor biodiversity is lower than that of other marine environments (Scheckenbach et al. 2010, op. cit.). The high percentage of novel lineages with no close representatives in genetic databases pointed to unique and rich communities of microbial eukaryotes at the abyssal seafloor, with a potentially high percentage of parasites. According to our cultivations during this cruise, the abyssal seafloor seems to be a contiguous habitat for microbial eukaryotes at least on regional scales. Nevertheless, we found significant differences between different deep-sea basins of the Atlantic demonstrating that ecological parameters should be the decisive factors shaping microbial eukaryote distribution patterns and zonation on large spatial scales at abyssal depths. We have to wait for the result of our molecular studies in our home laboratory in Cologne to check whether this idea is supported by the deep-sea data from the present cruise in the Pacific. The abyssal seafloor may be a mosaic of semi-isolated habitats, shaped and maintained on larger scales by diverse environmental gradients. Investigating the diversity and distribution of natural microbial communities in this largest habitat on Earth's surface is critical to our understanding of global biogeochemical cycles.

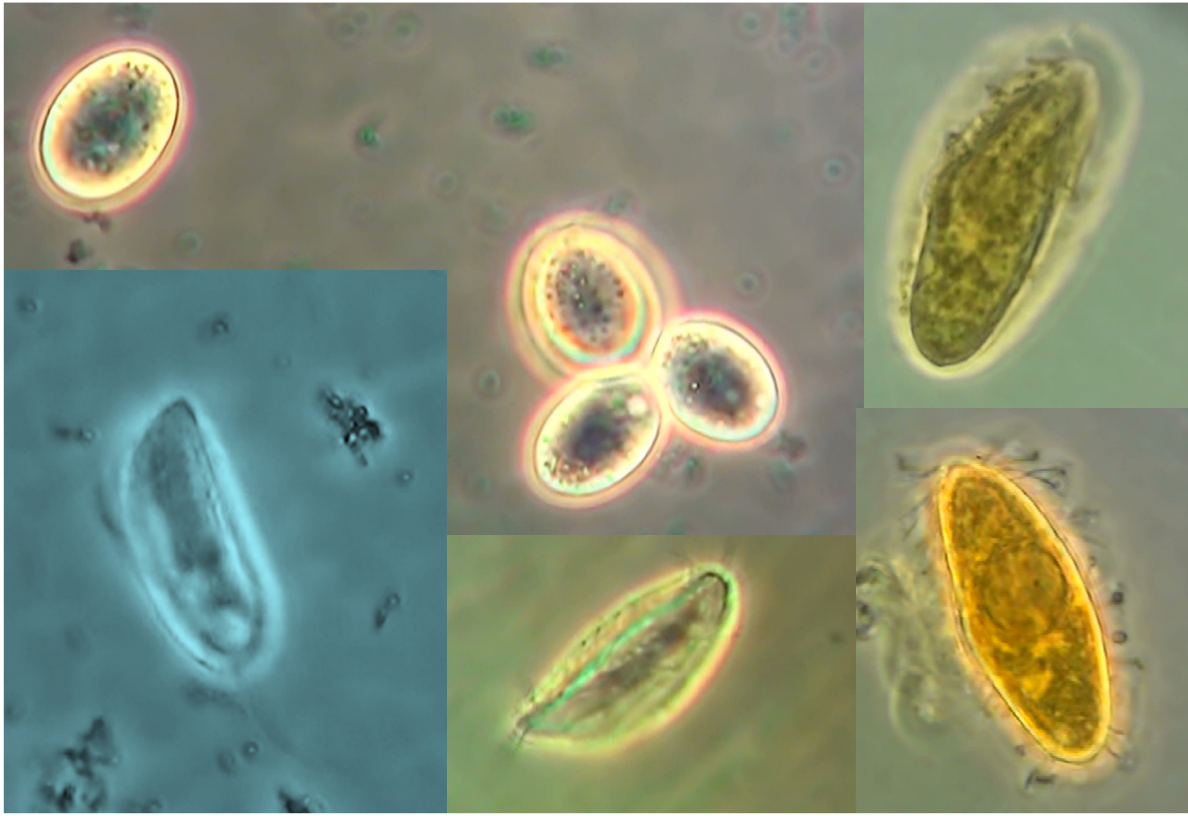


Fig. 12.9 Ciliates (probably scuticociliate) from a depth of 2500 m near Rota during the SO-223T cruise (upper left: cyst; others are trophonts; right: macronucleus stained).

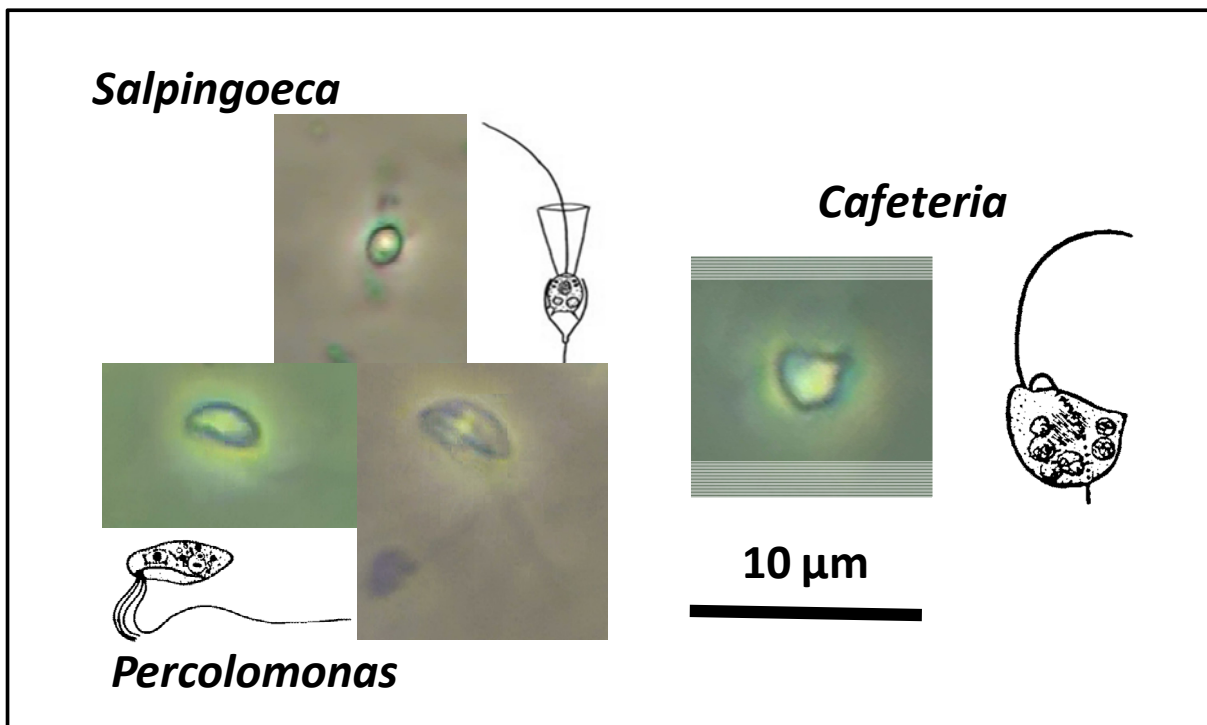


Fig. 12.10 Heterotrophic nanoflagellates of different genera isolated from depths of 1200, 2500 and 5400 m during the SO-223T cruise.

12.4 Hydrography

Water masses in the North and South Pacific can be distinguished by different physicochemical properties especially the salinity and oxygen contents (Figs. 12.11-12.13). At the northern end of our transect in the North Pacific, the upper water column (~200 m) shows salinities of ~34.5 psu and a higher oxygen content (4-4.5 ml/L) than the deeper layers. The intermediate water column in the North Pacific (400-1500 m) has a salinity and oxygen minimum layer (34.1-34.4 psu and 1.2-1.35 ml/L) that shoals towards the equator and carries the characteristics of North Pacific Intermediate Water (NPIW; Talley, 1993; You, 2003). At stations GeoB 17003 to GeoB 17005 in the North Pacific, a salinity minimum is located between 400 and 800 m water depth (Figs. 12.12, 12.13). It reaches its lowest value of 34 psu at stations GeoB 17004 and -5 and is shallowest at station GeoB 17005 (centered at 500 m).

All stations in the North Pacific except stations GeoB 17001 and -2 show an oxygen distribution with a minimum of 1-1.35 ml/L at mid-depth and an increase towards the deeper layers. The oxygen minimum is deepest at the northern stations GeoB 17003 to -5 (centered at 700 to 1000 m water depth) and shallowest at station GeoB 17015 (centered at 200 m water depth). It is absent from the equatorial and South Pacific profiles. The bottom water in the South Pacific is enriched in oxygen relative to overlying deep water and the bottom water in the North Pacific. It reaches highest concentrations of 3.64 ml/L at station GeoB 17011 at 5574 m water depth. The upper boundary of the high-oxygen bottom water shoals from 4000 m at station GeoB 17011 to 3500 m at station GeoB 17018. This high oxygen content as well as the temperature-salinity-density characteristics of this bottom water (Fig. 12.14) are characteristic of Antarctic Bottom Water (AABW) that is formed in the Southern Ocean and transported northward into the Pacific.

The South Pacific stations GeoB 17017 and -18 show a small increase in oxygen concentrations and a decrease in salinity at intermediate water depth (700-900 m). At the southernmost station GeoB 17019 (15°S), the oxygen maximum and salinity minimum at mid-depth become clear features with values of 3.98 ml/L and 34.38 psu, respectively. These properties are characteristic of Antarctic Intermediate Water (AAIW) that is formed in the Southern Ocean and transported within the subtropical South Pacific gyre northward and northwestward into the study area (Reid, 1997).

The equatorial water column is marked in the upper ~200 m by strong salinity variations (Fig. 12.15). A strong salinity maximum of up to 35.9 psu extends from 80 m to ~200 m water depth and marks the depth location of the eastward flowing Equatorial Undercurrent (EUC) that is supplied to a large extent by the New Guinea Coastal Undercurrent (e.g., Tsuchiya et al., 1989).

References

- Reid, J. L. (1997), On the total geostrophic circulation of the Pacific Ocean: flow patterns, tracers, and transports. *Prog. Oceanogr.* **39**, 263-352.
- Talley, L. D. (1993), Distribution and formation of North Pacific intermediate water. *J. Phys. Oceanogr.* **23**, 517-537.
- Tsuchiya, M., et al. (1989), Source waters of the Pacific Equatorial Undercurrent. *Prog. Oceanogr.* **23**, 101-147.
- You, Y. (2003), The pathway and circulation of North Pacific Intermediate Water. *Geophys. Res. Lett.* **30**, 2291.

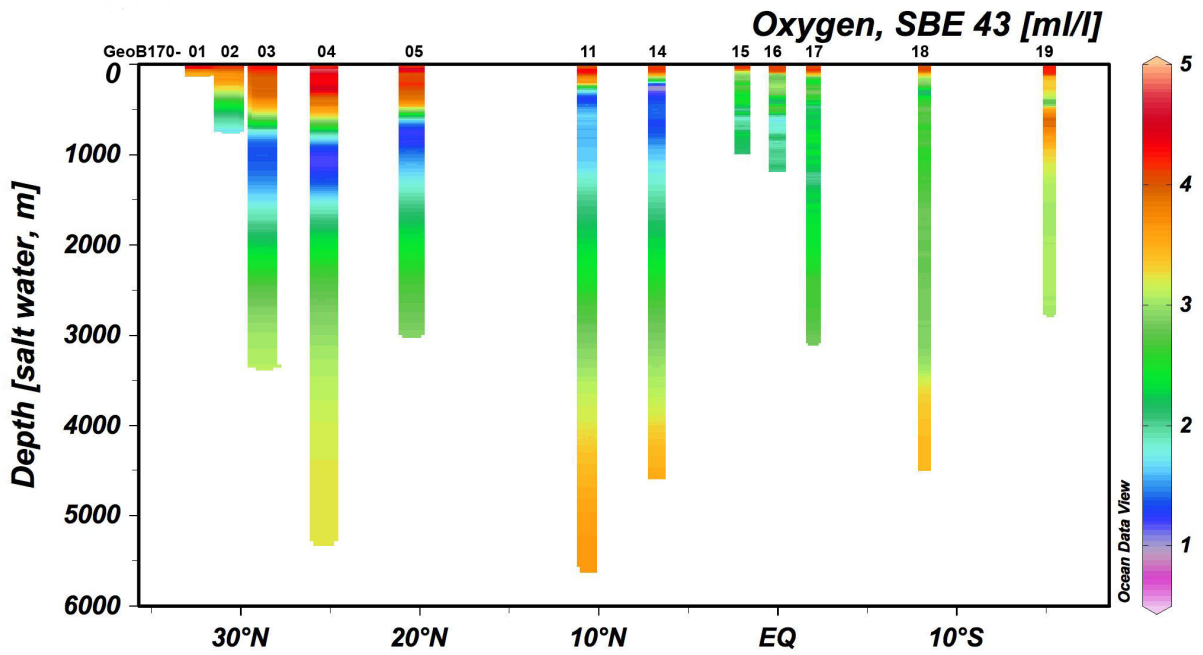


Fig. 12.11 Oxygen concentrations along the cruise track of cruise SO-223T.

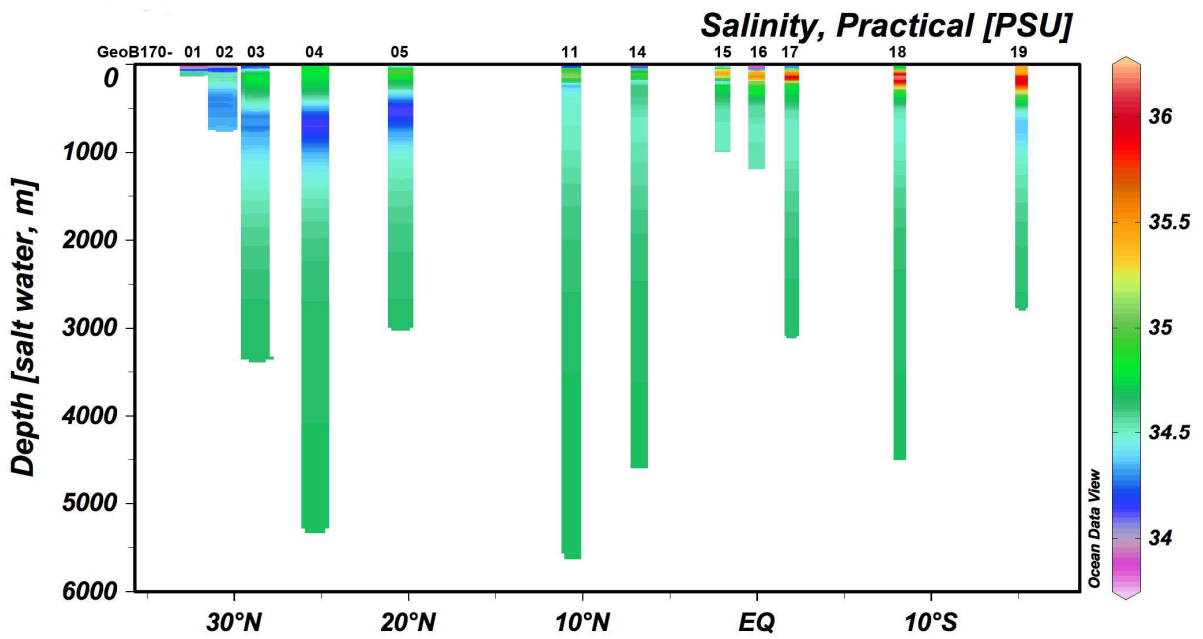


Fig. 12.12 Salinity along the cruise track of cruise SO-223T.

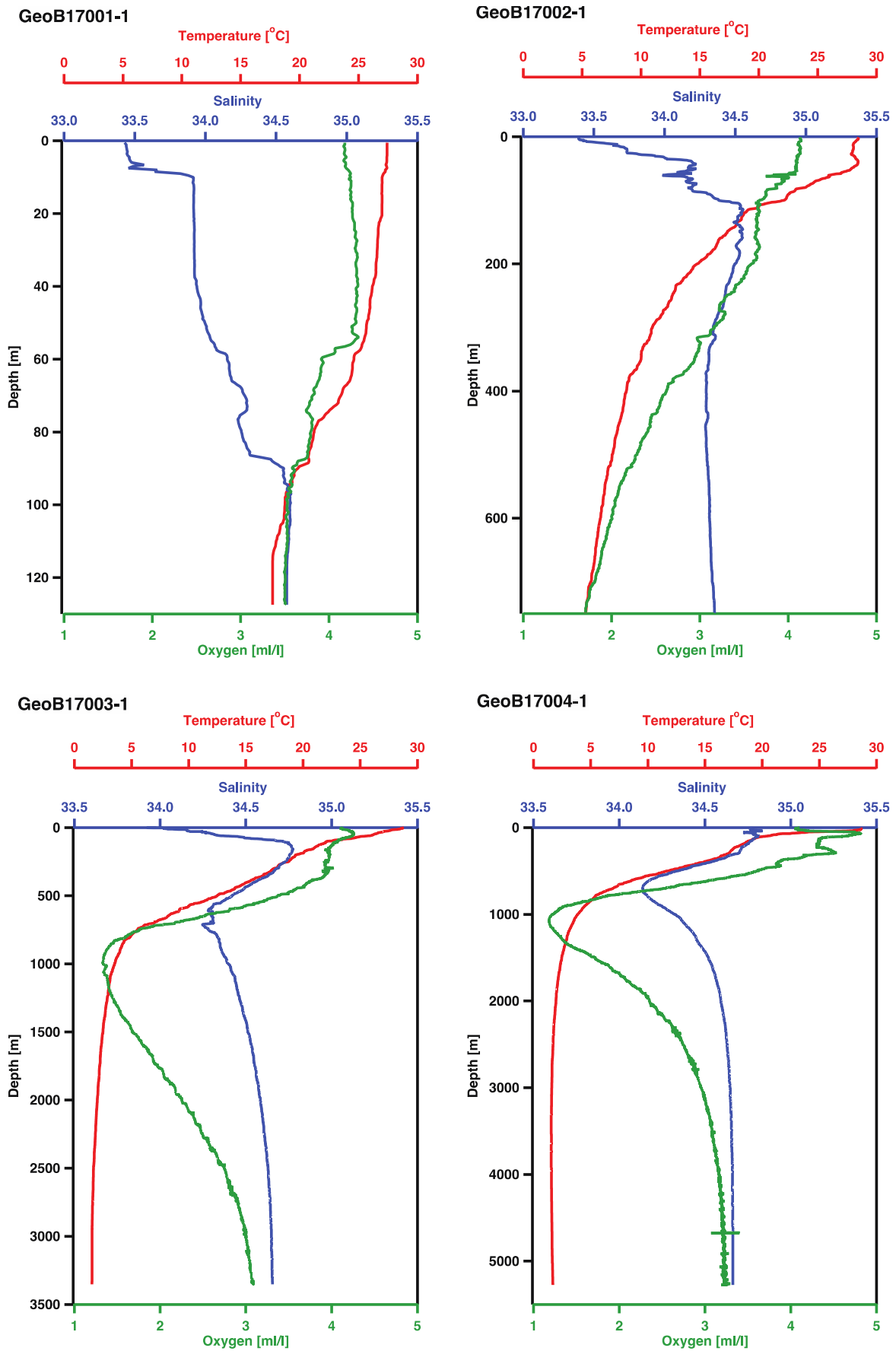


Fig. 12.13 Temperature, salinity, oxygen profiles of CTD stations of cruise SO-223T.

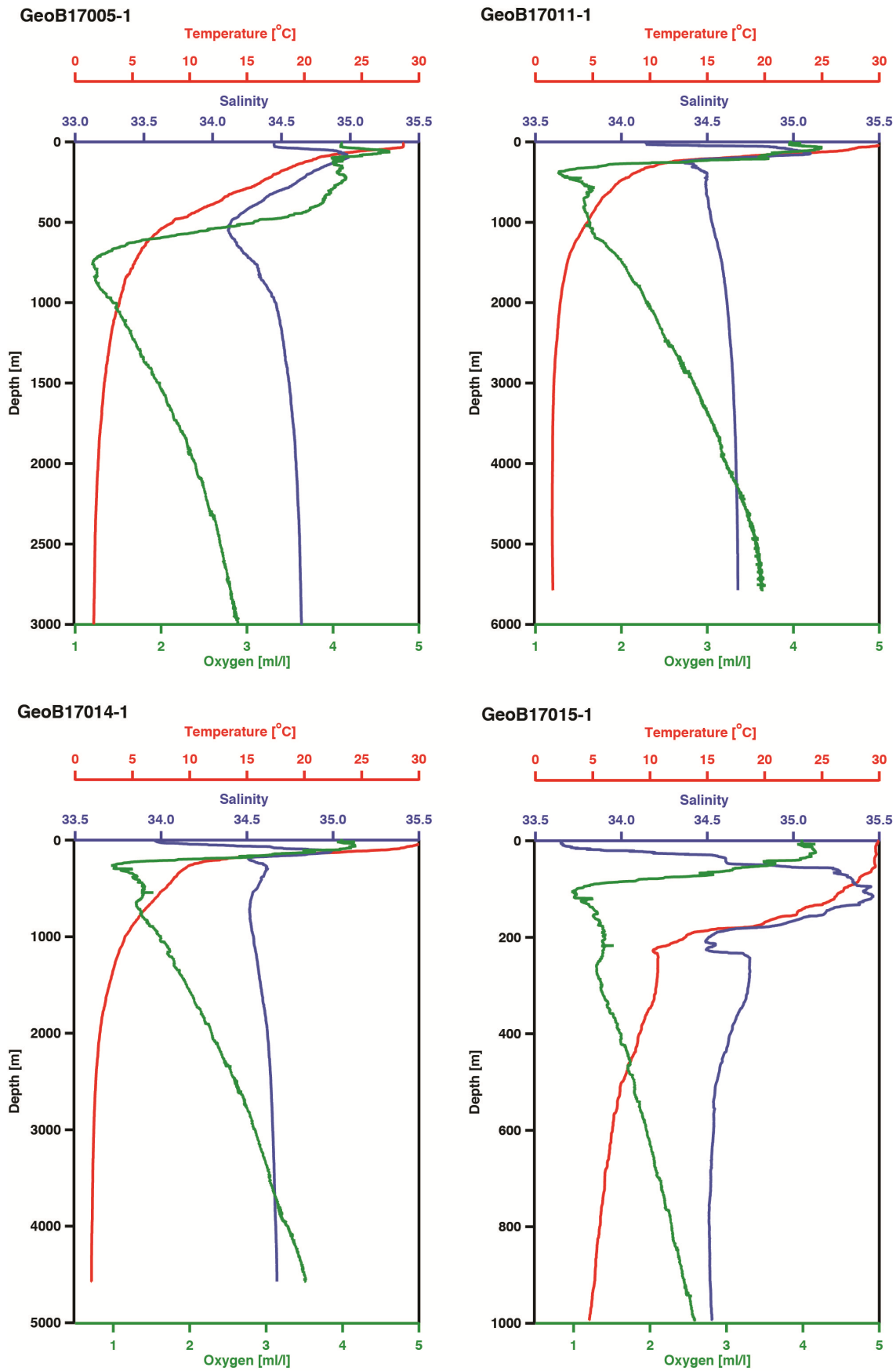


Fig. 12.13 (continued)

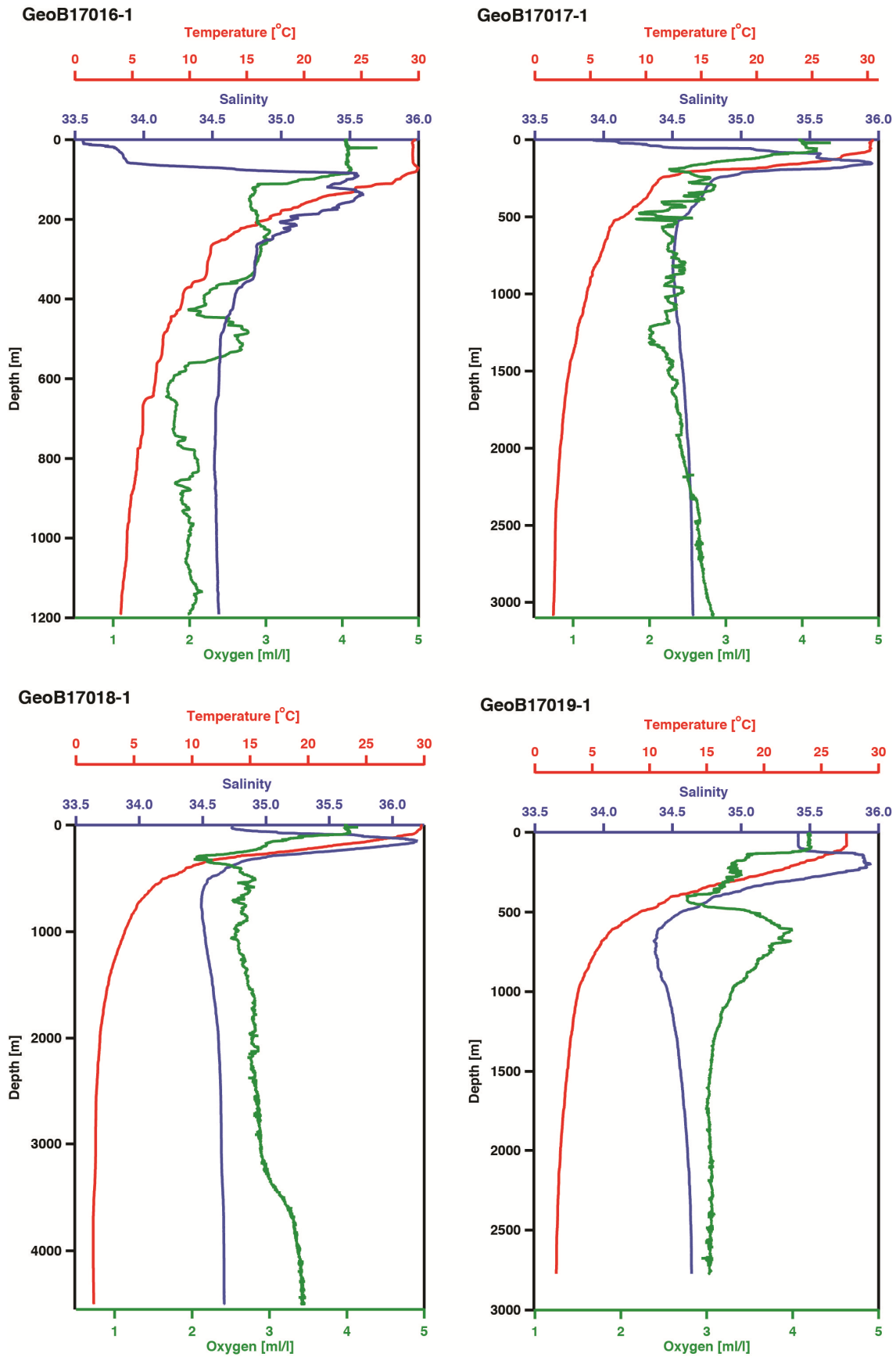


Fig. 12.13 (continued)

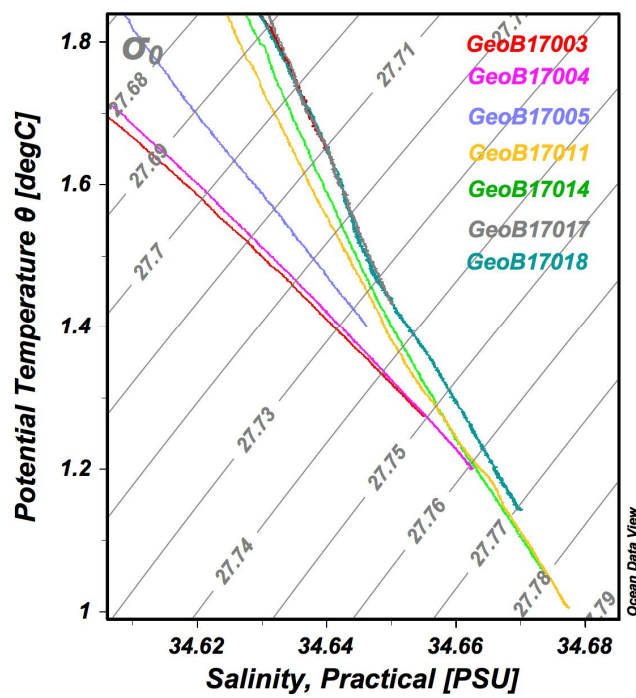


Fig. 12.14 Temperature-salinity diagram showing deep and bottom waters along the cruise track of cruise SO-223T. Stations GeoB 17011, -14, and -18 reach the densest water with $\sigma_0 > 27.76$, that coincide with high oxygen concentrations of ≥ 3.44 ml/L (see Fig. 12.3).

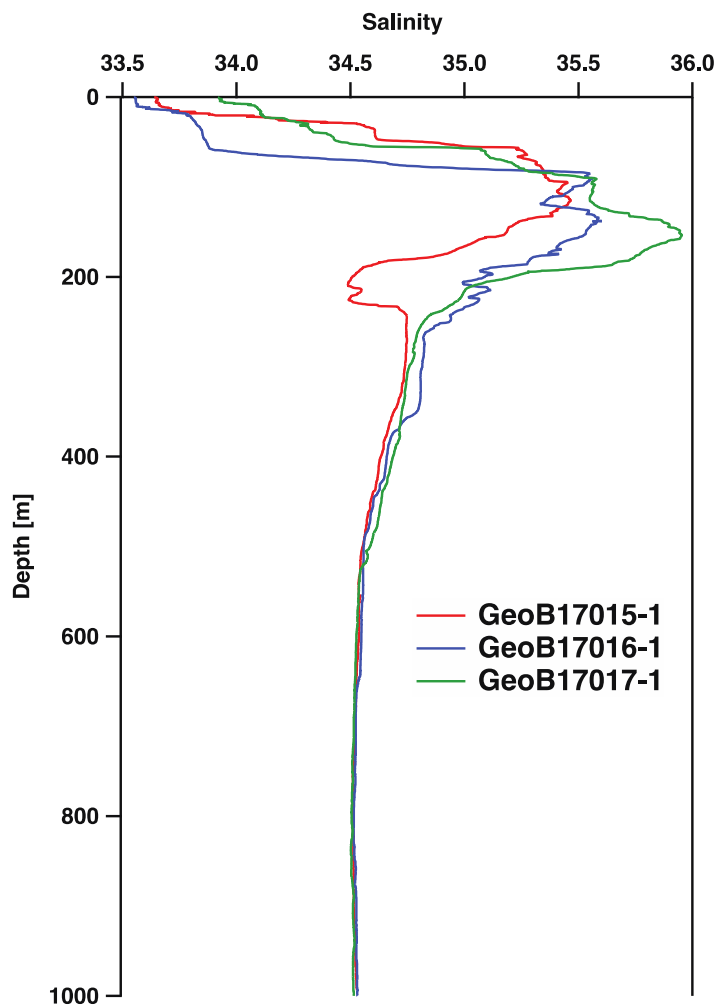


Fig. 12.15 Salinity profiles (psu) near the equator at GeoB 17015 (2°N), GeoB 17016 (0°) and GeoB 17017 (2°S).

12.5 Aerosol optical depth of 500 nm

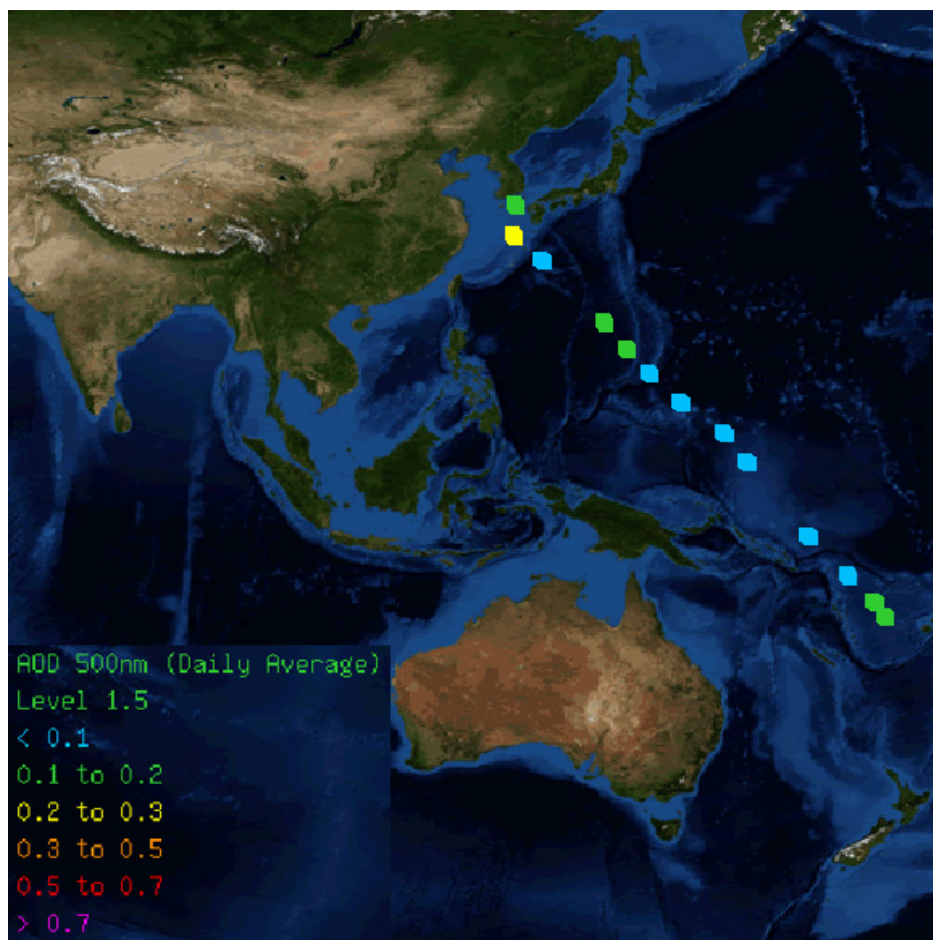


Fig. 12.16 Daily averages of the Aerosol optical depth (AOD) of 500 nm wavelength during the SO-223T cruise

13 Station List SO-223T

CTD CTD and rosette water sampler

MUC Multi-Corer

Station (GeoB)	Gear	Date	UTC	Latitude	Longitude	Water depth (m)	Instrument depth (m)	Remarks
17001-1	CTD	11.09.2012	16:17	32°19,992'N	127°29,975'E	129	129	
17002-1	CTD	12.09.2012	04:16	30°35,006'N	128°59,990'E	749	748,6	
17003-1	CTD	12.09.2012	18:50	28°42,980'N	131°05,040'E	3357	3350	
17004-1	CTD	13.09.2012	21:06	25°22,700'N	134°22,514'E	5339	5276	
17004-2	MUC	14.09.2012	03:00	25°22,700'N	134°22,519'E	5339	bottom	10/10
17005-1	CTD	15.09.2012	22:54	20°26,004'N	139°36,977'E	6315	3000	
17006-1	MUC	18.09.2012	22:28	14°03,717'N	144°58,779'E	1253	bottom	not released
17006-2	MUC	18.09.2012	23:55	14°03,699'N	144°03,699'E	1259	bottom	10/10
17007-1	MUC	19.09.2012	03:54	14°04,320'N	145°20,592'E	1829	bottom	8/10
17008-1	MUC	19.09.2012	06:10	14°05,613'N	145°23,191'E	1895	bottom	5/10
17009-1	MUC	19.09.2012	09:21	13°58,640'N	145°30,719'E	2687	bottom	9/10
17010-1	MUC	19.09.2012	22:38	14°24,252'N	145°25,420'E	1745	bottom	0/10
17011-1	CTD	21.09.2012	20:20	10°37,800'N	148°53,998'E	5667	5574	
17012-1	MUC	23.09.2012	00:29	10°37,799'N	148°37,800'E	5719	bottom	7/10
17013-1	MUC	23.09.2012	06:12	10°34,313'N	148°49,032'E	5497	bottom	6/10
17014-1	CTD	24.09.2012	22:29	6°47,032'N	154°11,979'E	4583	4573	
17015-1	CTD	26.09.2012	09:52	2°00,214'N	157°59,877'E	2695	893	
17016-1	CTD	27.09.2012	01:35	0°0,002'N	160°0,001'E	2837	1003	
17017-1	CTD	27.09.2012	19:20	2°0,018'S	162°0,042'E	3162	3082	
17018-1	CTD	29.09.2012	19:02	8°11,927'S	166°5,016'E	4623	4500	
17019-1	CTD	02.10.2012	21:25	15°13,021'S	173°31,125'E	2784	2772	
17019-2	MUC	03.10.2012	00:12	15°13,023'S	173°31,129'E	2776	bottom	7/10

Publications of this series:

- No. 1** **Wefer, G., E. Suess and cruise participants**
Bericht über die POLARSTERN-Fahrt ANT IV/2, Rio de Janeiro - Punta Arenas, 6.11. - 1.12.1985.
60 pages, Bremen, 1986.
- No. 2** **Hoffmann, G.**
Holozänstratigraphie und Küstenlinienverlagerung an der andalusischen Mittelmeerküste.
173 pages, Bremen, 1988. (out of print)
- No. 3** **Wefer, G. and cruise participants**
Bericht über die METEOR-Fahrt M 6/6, Libreville - Las Palmas, 18.2. - 23.3.1988.
97 pages, Bremen, 1988.
- No. 4** **Wefer, G., G.F. Lutze, T.J. Müller, O. Pfannkuche, W. Schenke, G. Siedler, W. Zenk**
Kurzbericht über die METEOR-Expedition No. 6, Hamburg - Hamburg, 28.10.1987 - 19.5.1988.
29 pages, Bremen, 1988. (out of print)
- No. 5** **Fischer, G.**
Stabile Kohlenstoff-Isotope in partikulärer organischer Substanz aus dem Südpolarmeer
(Atlantischer Sektor). 161 pages, Bremen, 1989.
- No. 6** **Berger, W.H. and G. Wefer**
Partikelfluß und Kohlenstoffkreislauf im Ozean.
Bericht und Kurzfassungen über den Workshop vom 3.-4. Juli 1989 in Bremen.
57 pages, Bremen, 1989.
- No. 7** **Wefer, G. and cruise participants**
Bericht über die METEOR - Fahrt M 9/4, Dakar - Santa Cruz, 19.2. - 16.3.1989.
103 pages, Bremen, 1989.
- No. 8** **Kölling, M.**
Modellierung geochemischer Prozesse im Sickerwasser und Grundwasser.
135 pages, Bremen, 1990.
- No. 9** **Heinze, P.-M.**
Das Auftriebsgeschehen vor Peru im Spätquartär. 204 pages, Bremen, 1990. (out of print)
- No. 10** **Willems, H., G. Wefer, M. Rinski, B. Donner, H.-J. Bellmann, L. Eißmann, A. Müller,
B.W. Flemming, H.-C. Höfle, J. Merkt, H. Streif, G. Hertweck, H. Kuntze, J. Schwaar,
W. Schäfer, M.-G. Schulz, F. Grube, B. Menke**
Beiträge zur Geologie und Paläontologie Norddeutschlands: Exkursionsführer.
202 pages, Bremen, 1990.
- No. 11** **Wefer, G. and cruise participants**
Bericht über die METEOR-Fahrt M 12/1, Kapstadt - Funchal, 13.3.1990 - 14.4.1990.
66 pages, Bremen, 1990.
- No. 12** **Dahmke, A., H.D. Schulz, A. Kölling, F. Kracht, A. Lücke**
Schwermetallspuren und geochemische Gleichgewichte zwischen Porenlösung und Sediment
im Wesermündungsgebiet. BMFT-Projekt MFU 0562, Abschlußbericht. 121 pages, Bremen, 1991.
- No. 13** **Rostek, F.**
Physikalische Strukturen von Tiefseesedimenten des Südatlantiks und ihre Erfassung in
Echolotregistrierungen. 209 pages, Bremen, 1991.
- No. 14** **Baumann, M.**
Die Ablagerung von Tschernobyl-Radiocäsium in der Norwegischen See und in der Nordsee.
133 pages, Bremen, 1991. (out of print)
- No. 15** **Kölling, A.**
Frühdiaagenetische Prozesse und Stoff-Flüsse in marinen und ästuarinen Sedimenten.
140 pages, Bremen, 1991.
- No. 16** **SFB 261 (ed.)**
1. Kolloquium des Sonderforschungsbereichs 261 der Universität Bremen (14.Juni 1991):
Der Südatlantik im Spätquartär: Rekonstruktion von Stoffhaushalt und Stromsystemen.
Kurzfassungen der Vorträge und Poster. 66 pages, Bremen, 1991.
- No. 17** **Pätzold, J. and cruise participants**
Bericht und erste Ergebnisse über die METEOR-Fahrt M 15/2, Rio de Janeiro - Vitoria,
18.1. - 7.2.1991. 46 pages, Bremen, 1993.
- No. 18** **Wefer, G. and cruise participants**
Bericht und erste Ergebnisse über die METEOR-Fahrt M 16/1, Pointe Noire - Recife,
27.3. - 25.4.1991. 120 pages, Bremen, 1991.
- No. 19** **Schulz, H.D. and cruise participants**
Bericht und erste Ergebnisse über die METEOR-Fahrt M 16/2, Recife - Belem, 28.4. - 20.5.1991.
149 pages, Bremen, 1991.

- No. 20 Berner, H.**
Mechanismen der Sedimentbildung in der Fram-Straße, im Arktischen Ozean und in der Norwegischen See. 167 pages, Bremen, 1991.
- No. 21 Schneider, R.**
Spätquartäre Produktivitätsänderungen im östlichen Angola-Becken: Reaktion auf Variationen im Passat-Monsun-Windsystem und in der Advektion des Benguela-Küstenstroms. 198 pages, Bremen, 1991. (out of print)
- No. 22 Hebbeln, D.**
Spätquartäre Stratigraphie und Paläozeanographie in der Fram-Straße. 174 pages, Bremen, 1991.
- No. 23 Lücke, A.**
Umsetzungsprozesse organischer Substanz während der Frühdiagenese in ästuarinen Sedimenten. 137 pages, Bremen, 1991.
- No. 24 Wefer, G. and cruise participants**
Bericht und erste Ergebnisse der METEOR-Fahrt M 20/1, Bremen - Abidjan, 18.11.- 22.12.1991. 74 pages, Bremen, 1992.
- No. 25 Schulz, H.D. and cruise participants**
Bericht und erste Ergebnisse der METEOR-Fahrt M 20/2, Abidjan - Dakar, 27.12.1991 - 3.2.1992. 173 pages, Bremen, 1992.
- No. 26 Gingele, F.**
Zur klimaabhängigen Bildung biogener und terrigener Sedimente und ihrer Veränderung durch die Frühdiagenese im zentralen und östlichen Südatlantik. 202 pages, Bremen, 1992.
- No. 27 Bickert, T.**
Rekonstruktion der spätquartären Bodenwasserzirkulation im östlichen Südatlantik über stabile Isotope benthischer Foraminiferen. 205 pages, Bremen, 1992. (out of print)
- No. 28 Schmidt, H.**
Der Benguela-Strom im Bereich des Walfisch-Rückens im Spätquartär. 172 pages, Bremen, 1992.
- No. 29 Meinecke, G.**
Spätquartäre Oberflächenwassertemperaturen im östlichen äquatorialen Atlantik. 181 pages, Bremen, 1992.
- No. 30 Bathmann, U., U. Bleil, A. Dahmke, P. Müller, A. Nehr Korn, E.-M. Nöthig, M. Olesch, J. Pätzold, H.D. Schulz, V. Smetacek, V. Spieß, G. Wefer, H. Willems**
Bericht des Graduierten Kollegs. Stoff-Flüsse in marinen Geosystemen. Berichtszeitraum Oktober 1990 - Dezember 1992. 396 pages, Bremen, 1992.
- No. 31 Damm, E.**
Frühdiagenetische Verteilung von Schwermetallen in Schlicksedimenten der westlichen Ostsee. 115 pages, Bremen, 1992.
- No. 32 Antia, E.E.**
Sedimentology, Morphodynamics and Facies Association of a mesotidal Barrier Island Shoreface (Spiekeroog, Southern North Sea). 370 pages, Bremen, 1993.
- No. 33 Duinker, J. and G. Wefer (ed.)**
Bericht über den 1. JGOFS-Workshop. 1./2. Dezember 1992 in Bremen. 83 pages, Bremen, 1993.
- No. 34 Kasten, S.**
Die Verteilung von Schwermetallen in den Sedimenten eines stadtbremischen Hafenbeckens. 103 pages, Bremen, 1993.
- No. 35 Spieß, V.**
Digitale Sedimentographie. Neue Wege zu einer hochauflösenden Akustostratigraphie. 199 pages, Bremen, 1993.
- No. 36 Schinzel, U.**
Laborversuche zu frühdiagenetischen Reaktionen von Eisen (III) - Oxidhydraten in marinen Sedimenten. 189 pages, Bremen, 1993.
- No. 37 Sieger, R.**
CoTAM - ein Modell zur Modellierung des Schwermetalltransports in Grundwasserleitern. 56 pages, Bremen, 1993. (out of print)
- No. 38 Willems, H. (ed.)**
Geoscientific Investigations in the Tethyan Himalayas. 183 pages, Bremen, 1993.
- No. 39 Hamer, K.**
Entwicklung von Laborversuchen als Grundlage für die Modellierung des Transportverhaltens von Arsenat, Blei, Cadmium und Kupfer in wassergesättigten Säulen. 147 pages, Bremen, 1993.
- No. 40 Sieger, R.**
Modellierung des Stofftransports in porösen Medien unter Ankopplung kinetisch gesteuerter Sorptions- und Redoxprozesse sowie thermischer Gleichgewichte. 158 pages, Bremen, 1993.

- No. 41** **Thießen, W.**
Magnetische Eigenschaften von Sedimenten des östlichen Südatlantiks und ihre paläozeanographische Relevanz. 170 pages, Bremen, 1993.
- No. 42** **Spieß, V. and cruise participants**
Report and preliminary results of METEOR-Cruise M 23/1, Kapstadt - Rio de Janeiro, 4.-25.2.1993. 139 pages, Bremen, 1994.
- No. 43** **Bleil, U. and cruise participants**
Report and preliminary results of METEOR-Cruise M 23/2, Rio de Janeiro - Recife, 27.2.-19.3.1993. 133 pages, Bremen, 1994.
- No. 44** **Wefer, G. and cruise participants**
Report and preliminary results of METEOR-Cruise M 23/3, Recife - Las Palmas, 21.3. - 12.4.1993. 71 pages, Bremen, 1994.
- No. 45** **Giese, M. and G. Wefer (ed.)**
Bericht über den 2. JGOFS-Workshop. 18./19. November 1993 in Bremen. 93 pages, Bremen, 1994.
- No. 46** **Balzer, W. and cruise participants**
Report and preliminary results of METEOR-Cruise M 22/1, Hamburg - Recife, 22.9. - 21.10.1992. 24 pages, Bremen, 1994.
- No. 47** **Stax, R.**
Zyklische Sedimentation von organischem Kohlenstoff in der Japan See: Anzeiger für Änderungen von Paläozeanographie und Paläoklima im Spätkänozoikum. 150 pages, Bremen, 1994.
- No. 48** **Skowronek, F.**
Frühdigenetische Stoff-Flüsse gelöster Schwermetalle an der Oberfläche von Sedimenten des Weser Ästuares. 107 pages, Bremen, 1994.
- No. 49** **Dersch-Hansmann, M.**
Zur Klimaentwicklung in Ostasien während der letzten 5 Millionen Jahre: Terrigener Sedimenteintrag in die Japan See (ODP Ausfahrt 128). 149 pages, Bremen, 1994.
- No. 50** **Zabel, M.**
Frühdigenetische Stoff-Flüsse in Oberflächen-Sedimenten des äquatorialen und östlichen Südatlantik. 129 pages, Bremen, 1994.
- No. 51** **Bleil, U. and cruise participants**
Report and preliminary results of SONNE-Cruise SO 86, Buenos Aires - Capetown, 22.4. - 31.5.93. 116 pages, Bremen, 1994.
- No. 52** **Symposium: The South Atlantic: Present and Past Circulation.**
Bremen, Germany, 15 - 19 August 1994. Abstracts. 167 pages, Bremen, 1994.
- No. 53** **Kretzmann, U.B.**
57Fe-Mössbauer-Spektroskopie an Sedimenten - Möglichkeiten und Grenzen. 183 pages, Bremen, 1994.
- No. 54** **Bachmann, M.**
Die Karbonatrampe von Organyà im oberen Oberapt und unteren Unteralt (NE-Spanien, Prov. Lerida): Fazies, Zylo- und Sequenzstratigraphie. 147 pages, Bremen, 1994. (out of print)
- No. 55** **Kemle-von Mücke, S.**
Oberflächenwasserstruktur und -zirkulation des Südostatlantiks im Spätquartär. 151 pages, Bremen, 1994.
- No. 56** **Petermann, H.**
Magnetotaktische Bakterien und ihre Magnetosome in Oberflächensedimenten des Südatlantiks. 134 pages, Bremen, 1994.
- No. 57** **Mulitza, S.**
Spätquartäre Variationen der oberflächennahen Hydrographie im westlichen äquatorialen Atlantik. 97 pages, Bremen, 1994.
- No. 58** **Segl, M. and cruise participants**
Report and preliminary results of METEOR-Cruise M 29/1, Buenos-Aires - Montevideo, 17.6. - 13.7.1994. 94 pages, Bremen, 1994.
- No. 59** **Bleil, U. and cruise participants**
Report and preliminary results of METEOR-Cruise M 29/2, Montevideo - Rio de Janeiro 15.7. - 8.8.1994. 153 pages, Bremen, 1994.
- No. 60** **Henrich, R. and cruise participants**
Report and preliminary results of METEOR-Cruise M 29/3, Rio de Janeiro - Las Palmas 11.8. - 5.9.1994. Bremen, 1994. (out of print)

- No. 61 Sagemann, J.**
Saisonale Variationen von Porenwasserprofilen, Nährstoff-Flüssen und Reaktionen in intertidalen Sedimenten des Weser-Ästuars. 110 pages, Bremen, 1994. (out of print)
- No. 62 Giese, M. and G. Wefer**
Bericht über den 3. JGOFS-Workshop. 5./6. Dezember 1994 in Bremen. 84 pages, Bremen, 1995.
- No. 63 Mann, U.**
Genese kretazischer Schwarzschiefer in Kolumbien: Globale vs. regionale/lokale Prozesse. 153 pages, Bremen, 1995. (out of print)
- No. 64 Willems, H., Wan X., Yin J., Dongdui L., Liu G., S. Dürr, K.-U. Gräfe**
The Mesozoic development of the N-Indian passive margin and of the Xigaze Forearc Basin in southern Tibet, China. – Excursion Guide to IGCP 362 Working-Group Meeting "Integrated Stratigraphy". 113 pages, Bremen, 1995. (out of print)
- No. 65 Hünken, U.**
Liefergebiets - Charakterisierung proterozoischer Goldseifen in Ghana anhand von Fluideinschluß - Untersuchungen. 270 pages, Bremen, 1995.
- No. 66 Nyandwi, N.**
The Nature of the Sediment Distribution Patterns in ther Spiekeroog Backbarrier Area, the East Frisian Islands. 162 pages, Bremen, 1995.
- No. 67 Isenbeck-Schröter, M.**
Transportverhalten von Schwermetallkationen und Oxoanionen in wassergesättigten Sanden. - Laborversuche in Säulen und ihre Modellierung -. 182 pages, Bremen, 1995.
- No. 68 Hebbeln, D. and cruise participants**
Report and preliminary results of SONNE-Cruise SO 102, Valparaiso - Valparaiso, 95. 134 pages, Bremen, 1995.
- No. 69 Willems, H. (Sprecher), U. Bathmann, U. Bleil, T. v. Dobeneck, K. Herterich, B.B. Jorgensen, E.-M. Nöthig, M. Olesch, J. Pätzold, H.D. Schulz, V. Smetacek, V. Speiß, G. Wefer**
Bericht des Graduierten-Kollegs Stoff-Flüsse in marine Geosystemen. Berichtszeitraum Januar 1993 - Dezember 1995. 45 & 468 pages, Bremen, 1995.
- No. 70 Giese, M. and G. Wefer**
Bericht über den 4. JGOFS-Workshop. 20./21. November 1995 in Bremen. 60 pages, Bremen, 1996. (out of print)
- No. 71 Meggers, H.**
Pliozän-quartäre Karbonatsedimentation und Paläozeanographie des Nordatlantiks und des Europäischen Nordmeeres - Hinweise aus planktischen Foraminiferengemeinschaften. 143 pages, Bremen, 1996. (out of print)
- No. 72 Teske, A.**
Phylogenetische und ökologische Untersuchungen an Bakterien des oxidativen und reduktiven marinen Schwefelkreislaufs mittels ribosomaler RNA. 220 pages, Bremen, 1996. (out of print)
- No. 73 Andersen, N.**
Biogeochemische Charakterisierung von Sinkstoffen und Sedimenten aus ostantlantischen Produktions-Systemen mit Hilfe von Biomarkern. 215 pages, Bremen, 1996.
- No. 74 Treppke, U.**
Saisonalität im Diatomeen- und Silikoflagellatenfluß im östlichen tropischen und subtropischen Atlantik. 200 pages, Bremen, 1996.
- No. 75 Schüring, J.**
Die Verwendung von Steinkohlebergematerialien im Deponiebau im Hinblick auf die Pyritverwitterung und die Eignung als geochemische Barriere. 110 pages, Bremen, 1996.
- No. 76 Pätzold, J. and cruise participants**
Report and preliminary results of VICTOR HENSEN cruise JOPS II, Leg 6, Fortaleza - Recife, 10.3. - 26.3. 1995 and Leg 8, Vitoria - Vitoria, 10.4. - 23.4.1995. 87 pages, Bremen, 1996.
- No. 77 Bleil, U. and cruise participants**
Report and preliminary results of METEOR-Cruise M 34/1, Cape Town - Walvis Bay, 3.-26.1.1996. 129 pages, Bremen, 1996.
- No. 78 Schulz, H.D. and cruise participants**
Report and preliminary results of METEOR-Cruise M 34/2, Walvis Bay - Walvis Bay, 29.1.-18.2.96 133 pages, Bremen, 1996.
- No. 79 Wefer, G. and cruise participants**
Report and preliminary results of METEOR-Cruise M 34/3, Walvis Bay - Recife, 21.2.-17.3.1996. 168 pages, Bremen, 1996.

- No. 80** **Fischer, G. and cruise participants**
Report and preliminary results of METEOR-Cruise M 34/4, Recife - Bridgetown, 19.3.-15.4.1996. 105 pages, Bremen, 1996.
- No. 81** **Kulbrok, F.**
Biostratigraphie, Fazies und Sequenzstratigraphie einer Karbonatrampe in den Schichten der Oberkreide und des Alttertiärs Nordost-Ägyptens (Eastern Desert, N'Golf von Suez, Sinai). 153 pages, Bremen, 1996.
- No. 82** **Kasten, S.**
Early Diagenetic Metal Enrichments in Marine Sediments as Documents of Nonsteady-State Depositional Conditions. Bremen, 1996.
- No. 83** **Holmes, M.E.**
Reconstruction of Surface Ocean Nitrate Utilization in the Southeast Atlantic Ocean Based on Stable Nitrogen Isotopes. 113 pages, Bremen, 1996.
- No. 84** **Rühlemann, C.**
Akkumulation von Carbonat und organischem Kohlenstoff im tropischen Atlantik: Spätquartäre Produktivitäts-Variationen und ihre Steuerungsmechanismen. 139 pages, Bremen, 1996.
- No. 85** **Ratmeyer, V.**
Untersuchungen zum Eintrag und Transport lithogener und organischer partikulärer Substanz im östlichen subtropischen Nordatlantik. 154 pages, Bremen, 1996.
- No. 86** **Cepek, M.**
Zeitliche und räumliche Variationen von Coccolithophoriden-Gemeinschaften im subtropischen Ost-Atlantik: Untersuchungen an Plankton, Sinkstoffen und Sedimenten. 156 pages, Bremen, 1996.
- No. 87** **Otto, S.**
Die Bedeutung von gelöstem organischen Kohlenstoff (DOC) für den Kohlenstofffluß im Ozean. 150 pages, Bremen, 1996.
- No. 88** **Hensen, C.**
Frühdiaagenetische Prozesse und Quantifizierung benthischer Stoff-Flüsse in Oberflächensedimenten des Südatlantiks. 132 pages, Bremen, 1996.
- No. 89** **Giese, M. and G. Wefer**
Bericht über den 5. JGOFS-Workshop. 27./28. November 1996 in Bremen. 73 pages, Bremen, 1997.
- No. 90** **Wefer, G. and cruise participants**
Report and preliminary results of METEOR-Cruise M 37/1, Lisbon - Las Palmas, 4.-23.12.1996. 79 pages, Bremen, 1997.
- No. 91** **Isenbeck-Schröter, M., E. Bedbur, M. Kofod, B. König, T. Schramm & G. Mattheß**
Occurrence of Pesticide Residues in Water - Assessment of the Current Situation in Selected EU Countries. 65 pages, Bremen 1997.
- No. 92** **Kühn, M.**
Geochemische Folgereaktionen bei der hydrogeothermalen Energiegewinnung. 129 pages, Bremen 1997.
- No. 93** **Determann, S. & K. Herterich**
JGOFS-A6 "Daten und Modelle": Sammlung JGOFS-relevanter Modelle in Deutschland. 26 pages, Bremen, 1997.
- No. 94** **Fischer, G. and cruise participants**
Report and preliminary results of METEOR-Cruise M 38/1, Las Palmas - Recife, 25.1.-1.3.1997, with Appendix: Core Descriptions from METEOR Cruise M 37/1. Bremen, 1997.
- No. 95** **Bleil, U. and cruise participants**
Report and preliminary results of METEOR-Cruise M 38/2, Recife - Las Palmas, 4.3.-14.4.1997. 126 pages, Bremen, 1997.
- No. 96** **Neuer, S. and cruise participants**
Report and preliminary results of VICTOR HENSEN-Cruise 96/1. Bremen, 1997.
- No. 97** **Villinger, H. and cruise participants**
Fahrtbericht SO 111, 20.8. - 16.9.1996. 115 pages, Bremen, 1997.
- No. 98** **Lüning, S.**
Late Cretaceous - Early Tertiary sequence stratigraphy, paleoecology and geodynamics of Eastern Sinai, Egypt. 218 pages, Bremen, 1997.
- No. 99** **Haese, R.R.**
Beschreibung und Quantifizierung frühdiaagenetischer Reaktionen des Eisens in Sedimenten des Südatlantiks. 118 pages, Bremen, 1997.

- No. 100** **Lührte, R. von**
Verwertung von Bremer Baggergut als Material zur Oberflächenabdichtung von Deponien - Geochemisches Langzeitverhalten und Schwermetall-Mobilität (Cd, Cu, Ni, Pb, Zn). Bremen, 1997.
- No. 101** **Ebert, M.**
Der Einfluß des Redoxmilieus auf die Mobilität von Chrom im durchströmten Aquifer. 135 pages, Bremen, 1997.
- No. 102** **Krögel, F.**
Einfluß von Viskosität und Dichte des Seewassers auf Transport und Ablagerung von Wattsedimenten (Langeooger Rückseitenwatt, südliche Nordsee). 168 pages, Bremen, 1997.
- No. 103** **Kerntopf, B.**
Dinoflagellate Distribution Patterns and Preservation in the Equatorial Atlantic and Offshore North-West Africa. 137 pages, Bremen, 1997.
- No. 104** **Breitzke, M.**
Elastische Wellenausbreitung in marinen Sedimenten - Neue Entwicklungen der Ultraschall Sedimentphysik und Sedimentechographie. 298 pages, Bremen, 1997.
- No. 105** **Marchant, M.**
Rezente und spätquartäre Sedimentation planktischer Foraminiferen im Peru-Chile Strom. 115 pages, Bremen, 1997.
- No. 106** **Habicht, K.S.**
Sulfur isotope fractionation in marine sediments and bacterial cultures. 125 pages, Bremen, 1997.
- No. 107** **Hamer, K., R.v. Lührte, G. Becker, T. Felis, S. Keffel, B. Strotmann, C. Waschowitz, M. Kölling, M. Isenbeck-Schröter, H.D. Schulz**
Endbericht zum Forschungsvorhaben 060 des Landes Bremen: Baggergut der Hafengruppe Bremen-Stadt: Modelluntersuchungen zur Schwermetallmobilität und Möglichkeiten der Verwertung von Hafenschlick aus Bremischen Häfen. 98 pages, Bremen, 1997.
- No. 108** **Greeff, O.W.**
Entwicklung und Erprobung eines benthischen Landersystemes zur in situ-Bestimmung von Sulfatreduktionsraten mariner Sedimente. 121 pages, Bremen, 1997.
- No. 109** **Pätzold, M. und G. Wefer**
Bericht über den 6. JGOFS-Workshop am 4./5.12.1997 in Bremen. Im Anhang: Publikationen zum deutschen Beitrag zur Joint Global Ocean Flux Study (JGOFS), Stand 1/1998. 122 pages, Bremen, 1998.
- No. 110** **Landenberger, H.**
CoTRem, ein Multi-Komponenten Transport- und Reaktions-Modell. 142 pages, Bremen, 1998.
- No. 111** **Villinger, H. und Fahrtteilnehmer**
Fahrtbericht SO 124, 4.10. - 16.10.199. 90 pages, Bremen, 1997.
- No. 112** **Gietl, R.**
Biostratigraphie und Sedimentationsmuster einer nordostägyptischen Karbonatrampe unter Berücksichtigung der Alveolinen-Faunen. 142 pages, Bremen, 1998.
- No. 113** **Ziebis, W.**
The Impact of the Thalassinidean Shrimp *Callinassa truncata* on the Geochemistry of permeable, coastal Sediments. 158 pages, Bremen 1998.
- No. 114** **Schulz, H.D. and cruise participants**
Report and preliminary results of METEOR-Cruise M 41/1, Málaga - Libreville, 13.2.-15.3.1998. Bremen, 1998.
- No. 115** **Völker, D.J.**
Untersuchungen an strömungsbeeinflussten Sedimentationsmustern im Südozean. Interpretation sedimentechographischer Daten und numerische Modellierung. 152 pages, Bremen, 1998.
- No. 116** **Schlünz, B.**
Riverine Organic Carbon Input into the Ocean in Relation to Late Quaternary Climate Change. 136 pages, Bremen, 1998.
- No. 117** **Kuhnert, H.**
Aufzeichnung des Klimas vor Westaustralien in stabilen Isotopen in Korallenskeletten. 109 pages, Bremen, 1998.
- No. 118** **Kirst, G.**
Rekonstruktion von Oberflächenwassertemperaturen im östlichen Südatlantik anhand von Alkenonen. 130 pages, Bremen, 1998.
- No. 119** **Dürkoop, A.**
Der Brasil-Strom im Spätquartär: Rekonstruktion der oberflächennahen Hydrographie während der letzten 400 000 Jahre. 121 pages, Bremen, 1998.

- No. 120** **Lamy, F.**
Spätquartäre Variationen des terrigenen Sedimenteintrags entlang des chilenischen Kontinentalhangs als Abbild von Klimavariabilität im Milanković- und Sub-Milanković-Zeitbereich. 141 pages, Bremen, 1998.
- No. 121** **Neuer, S. and cruise participants**
Report and preliminary results of POSEIDON-Cruise Pos 237/2, Vigo – Las Palmas, 18.3.-31.3.1998. 39 pages, Bremen, 1998
- No. 122** **Romero, O.E.**
Marine planktonic diatoms from the tropical and equatorial Atlantic: temporal flux patterns and the sediment record. 205 pages, Bremen, 1998.
- No. 123** **Spieß, V. und Fahrtteilnehmer**
Report and preliminary results of RV SONNE Cruise 125, Cochín – Chittagong, 17.10.-17.11.1997. 128 pages, Bremen, 1998.
- No. 124** **Arz, H.W.**
Dokumentation von kurzfristigen Klimaschwankungen des Spätquartärs in Sedimenten des westlichen äquatorialen Atlantiks. 96 pages, Bremen, 1998.
- No. 125** **Wolff, T.**
Mixed layer characteristics in the equatorial Atlantic during the late Quaternary as deduced from planktonic foraminifera. 132 pages, Bremen, 1998.
- No. 126** **Dittert, N.**
Late Quaternary Planktic Foraminifera Assemblages in the South Atlantic Ocean: Quantitative Determination and Preservational Aspects. 165 pages, Bremen, 1998.
- No. 127** **Höll, C.**
Kalkige und organisch-wandige Dinoflagellaten-Zysten in Spätquartären Sedimenten des tropischen Atlantiks und ihre palökologische Auswertbarkeit. 121 pages, Bremen, 1998.
- No. 128** **Hencke, J.**
Redoxreaktionen im Grundwasser: Etablierung und Verlagerung von Reaktionsfronten und ihre Bedeutung für die Spurenelement-Mobilität. 122 pages, Bremen 1998.
- No. 129** **Pätzold, J. and cruise participants**
Report and preliminary results of METEOR-Cruise M 41/3, Vitória, Brasil – Salvador de Bahia, Brasil, 18.4. - 15.5.1998. Bremen, 1999.
- No. 130** **Fischer, G. and cruise participants**
Report and preliminary results of METEOR-Cruise M 41/4, Salvador de Bahia, Brasil – Las Palmas, Spain, 18.5. – 13.6.1998. Bremen, 1999.
- No. 131** **Schlünz, B. and G. Wefer**
Bericht über den 7. JGOFS-Workshop am 3. und 4.12.1998 in Bremen. Im Anhang: Publikationen zum deutschen Beitrag zur Joint Global Ocean Flux Study (JGOFS), Stand 1/ 1999. 100 pages, Bremen, 1999.
- No. 132** **Wefer, G. and cruise participants**
Report and preliminary results of METEOR-Cruise M 42/4, Las Palmas - Las Palmas - Viena do Castelo; 26.09.1998 - 26.10.1998. 104 pages, Bremen, 1999.
- No. 133** **Felis, T.**
Climate and ocean variability reconstructed from stable isotope records of modern subtropical corals (Northern Red Sea). 111 pages, Bremen, 1999.
- No. 134** **Draschba, S.**
North Atlantic climate variability recorded in reef corals from Bermuda. 108 pages, Bremen, 1999.
- No. 135** **Schmieder, F.**
Magnetic Cyclostratigraphy of South Atlantic Sediments. 82 pages, Bremen, 1999.
- No. 136** **Rieß, W.**
In situ measurements of respiration and mineralisation processes – Interaction between fauna and geochemical fluxes at active interfaces. 68 pages, Bremen, 1999.
- No. 137** **Devey, C.W. and cruise participants**
Report and shipboard results from METEOR-cruise M 41/2, Libreville – Vitoria, 18.3. – 15.4.98. 59 pages, Bremen, 1999.
- No. 138** **Wenzhöfer, F.**
Biogeochemical processes at the sediment water interface and quantification of metabolically driven calcite dissolution in deep sea sediments. 103 pages, Bremen, 1999.
- No. 139** **Klump, J.**
Biogenic barite as a proxy of paleoproductivity variations in the Southern Peru-Chile Current. 107 pages, Bremen, 1999.

- No. 140** **Huber, R.**
Carbonate sedimentation in the northern Northatlantic since the late pliocene. 103 pages, Bremen, 1999.
- No. 141** **Schulz, H.**
Nitrate-storing sulfur bacteria in sediments of coastal upwelling. 94 pages, Bremen, 1999.
- No. 142** **Mai, S.**
Die Sedimentverteilung im Wattenmeer: ein Simulationsmodell. 114 pages, Bremen, 1999.
- No. 143** **Neuer, S. and cruise participants**
Report and preliminary results of Poseidon Cruise 248, Las Palmas - Las Palmas, 15.2.-26.2.1999. 45 pages, Bremen, 1999.
- No. 144** **Weber, A.**
Schwefelkreislauf in marinen Sedimenten und Messung von in situ Sulfatreduktionsraten. 122 pages, Bremen, 1999.
- No. 145** **Hadeler, A.**
Sorptionreaktionen im Grundwasser: Unterschiedliche Aspekte bei der Modellierung des Transportverhaltens von Zink. 122 pages, 1999.
- No. 146** **Dierßen, H.**
Zum Kreislauf ausgewählter Spurenmetalle im Südatlantik: Vertikaltransport und Wechselwirkung zwischen Partikeln und Lösung. 167 pages, Bremen, 1999.
- No. 147** **Zühlsdorff, L.**
High resolution multi-frequency seismic surveys at the Eastern Juan de Fuca Ridge Flank and the Cascadia Margin – Evidence for thermally and tectonically driven fluid upflow in marine sediments. 118 pages, Bremen 1999.
- No. 148** **Kinkel, H.**
Living and late Quaternary Coccolithophores in the equatorial Atlantic Ocean: response of distribution and productivity patterns to changing surface water circulation. 183 pages, Bremen, 2000.
- No. 149** **Pätzold, J. and cruise participants**
Report and preliminary results of METEOR Cruise M 44/3, Aqaba (Jordan) - Safaga (Egypt) – Dubá (Saudi Arabia) – Suez (Egypt) - Haifa (Israel), 12.3.-26.3.-2.4.-4.4.1999. 135 pages, Bremen, 2000.
- No. 150** **Schlünz, B. and G. Wefer**
Bericht über den 8. JGOFS-Workshop am 2. und 3.12.1999 in Bremen. Im Anhang: Publikationen zum deutschen Beitrag zur Joint Global Ocean Flux Study (JGOFS), Stand 1/ 2000. 95 pages, Bremen, 2000.
- No. 151** **Schnack, K.**
Biostratigraphie und fazielle Entwicklung in der Oberkreide und im Alttertiär im Bereich der Kharga Schwelle, Westliche Wüste, SW-Ägypten. 142 pages, Bremen, 2000.
- No. 152** **Karwath, B.**
Ecological studies on living and fossil calcareous dinoflagellates of the equatorial and tropical Atlantic Ocean. 175 pages, Bremen, 2000.
- No. 153** **Moustafa, Y.**
Paleoclimatic reconstructions of the Northern Red Sea during the Holocene inferred from stable isotope records of modern and fossil corals and molluscs. 102 pages, Bremen, 2000.
- No. 154** **Villinger, H. and cruise participants**
Report and preliminary results of SONNE-cruise 145-1 Balboa – Talcahuana, 21.12.1999 – 28.01.2000. 147 pages, Bremen, 2000.
- No. 155** **Rusch, A.**
Dynamik der Feinfraktion im Oberflächenhorizont permeabler Schelfsedimente. 102 pages, Bremen, 2000.
- No. 156** **Moos, C.**
Reconstruction of upwelling intensity and paleo-nutrient gradients in the northwest Arabian Sea derived from stable carbon and oxygen isotopes of planktic foraminifera. 103 pages, Bremen, 2000.
- No. 157** **Xu, W.**
Mass physical sediment properties and trends in a Wadden Sea tidal basin. 127 pages, Bremen, 2000.
- No. 158** **Meinecke, G. and cruise participants**
Report and preliminary results of METEOR Cruise M 45/1, Malaga (Spain) - Lissabon (Portugal), 19.05. - 08.06.1999. 39 pages, Bremen, 2000.
- No. 159** **Vink, A.**
Reconstruction of recent and late Quaternary surface water masses of the western subtropical Atlantic Ocean based on calcareous and organic-walled dinoflagellate cysts. 160 pages, Bremen, 2000.
- No. 160** **Willems, H. (Sprecher), U. Bleil, R. Henrich, K. Herterich, B.B. Jørgensen, H.-J. Kuß, M. Olesch, H.D. Schulz, V. Spieß, G. Wefer**
Abschlußbericht des Graduierten-Kollegs Stoff-Flüsse in marine Geosystemen. Zusammenfassung und Berichtszeitraum Januar 1996 - Dezember 2000. 340 pages, Bremen, 2000.

- No. 161** **Sprengel, C.**
 Untersuchungen zur Sedimentation und Ökologie von Coccolithophoriden im Bereich der Kanarischen Inseln: Saisonale Flussmuster und Karbonatexport. 165 pages, Bremen, 2000.
- No. 162** **Donner, B. and G. Wefer**
 Bericht über den JGOFS-Workshop am 18.-21.9.2000 in Bremen: Biogeochemical Cycles: German Contributions to the International Joint Global Ocean Flux Study. 87 pages, Bremen, 2000.
- No. 163** **Neuer, S. and cruise participants**
 Report and preliminary results of Meteor Cruise M 45/5, Bremen – Las Palmas, October 1 – November 3, 1999. 93 pages, Bremen, 2000.
- No. 164** **Devey, C. and cruise participants**
 Report and preliminary results of Sonne Cruise SO 145/2, Talcahuano (Chile) - Arica (Chile), February 4 – February 29, 2000. 63 pages, Bremen, 2000.
- No. 165** **Freudenthal, T.**
 Reconstruction of productivity gradients in the Canary Islands region off Morocco by means of sinking particles and sediments. 147 pages, Bremen, 2000.
- No. 166** **Adler, M.**
 Modeling of one-dimensional transport in porous media with respect to simultaneous geochemical reactions in CoTRem. 147 pages, Bremen, 2000.
- No. 167** **Santamarina Cuneo, P.**
 Fluxes of suspended particulate matter through a tidal inlet of the East Frisian Wadden Sea (southern North Sea). 91 pages, Bremen, 2000.
- No. 168** **Benthien, A.**
 Effects of CO₂ and nutrient concentration on the stable carbon isotope composition of C_{37:2} alkenones in sediments of the South Atlantic Ocean. 104 pages, Bremen, 2001.
- No. 169** **Lavik, G.**
 Nitrogen isotopes of sinking matter and sediments in the South Atlantic. 140 pages, Bremen, 2001.
- No. 170** **Budziak, D.**
 Late Quaternary monsoonal climate and related variations in paleoproductivity and alkenone-derived sea-surface temperatures in the western Arabian Sea. 114 pages, Bremen, 2001.
- No. 171** **Gerhardt, S.**
 Late Quaternary water mass variability derived from the pteropod preservation state in sediments of the western South Atlantic Ocean and the Caribbean Sea. 109 pages, Bremen, 2001.
- No. 172** **Bleil, U. and cruise participants**
 Report and preliminary results of Meteor Cruise M 46/3, Montevideo (Uruguay) – Mar del Plata (Argentina), January 4 – February 7, 2000. Bremen, 2001.
- No. 173** **Wefer, G. and cruise participants**
 Report and preliminary results of Meteor Cruise M 46/4, Mar del Plata (Argentina) – Salvador da Bahia (Brazil), February 10 – March 13, 2000. With partial results of METEOR cruise M 46/2. 136 pages, Bremen, 2001.
- No. 174** **Schulz, H.D. and cruise participants**
 Report and preliminary results of Meteor Cruise M 46/2, Recife (Brazil) – Montevideo (Uruguay), December 2 – December 29, 1999. 107 pages, Bremen, 2001.
- No. 175** **Schmidt, A.**
 Magnetic mineral fluxes in the Quaternary South Atlantic: Implications for the paleoenvironment. 97 pages, Bremen, 2001.
- No. 176** **Bruhns, P.**
 Crystal chemical characterization of heavy metal incorporation in brick burning processes. 93 pages, Bremen, 2001.
- No. 177** **Karius, V.**
 Baggergut der Hafengruppe Bremen-Stadt in der Ziegelherstellung. 131 pages, Bremen, 2001.
- No. 178** **Adegbie, A. T.**
 Reconstruction of paleoenvironmental conditions in Equatorial Atlantic and the Gulf of Guinea Basins for the last 245,000 years. 113 pages, Bremen, 2001.
- No. 179** **Spieß, V. and cruise participants**
 Report and preliminary results of R/V Sonne Cruise SO 149, Victoria - Victoria, 16.8. - 16.9.2000. 100 pages, Bremen, 2001.
- No. 180** **Kim, J.-H.**
 Reconstruction of past sea-surface temperatures in the eastern South Atlantic and the eastern South Pacific across Termination I based on the Alkenone Method. 114 pages, Bremen, 2001.

- No. 181** **von Lom-Keil, H.**
Sedimentary waves on the Namibian continental margin and in the Argentine Basin – Bottom flow reconstructions based on high resolution echosounder data. 126 pages, Bremen, 2001.
- No. 182** **Hebbeln, D. and cruise participants**
PUCK: Report and preliminary results of R/V Sonne Cruise SO 156, Valparaiso (Chile) - Talcahuano (Chile), March 29 - May 14, 2001. 195 pages, Bremen, 2001.
- No. 183** **Wendler, J.**
Reconstruction of astronomically-forced cyclic and abrupt paleoecological changes in the Upper Cretaceous Boreal Realm based on calcareous dinoflagellate cysts. 149 pages, Bremen, 2001.
- No. 184** **Volbers, A.**
Planktic foraminifera as paleoceanographic indicators: production, preservation, and reconstruction of upwelling intensity. Implications from late Quaternary South Atlantic sediments. 122 pages, Bremen, 2001.
- No. 185** **Bleil, U. and cruise participants**
Report and preliminary results of R/V METEOR Cruise M 49/3, Montevideo (Uruguay) - Salvador (Brasil), March 9 - April 1, 2001. 99 pages, Bremen, 2001.
- No. 186** **Scheibner, C.**
Architecture of a carbonate platform-to-basin transition on a structural high (Campanian-early Eocene, Eastern Desert, Egypt) – classical and modelling approaches combined. 173 pages, Bremen, 2001.
- No. 187** **Schneider, S.**
Quartäre Schwankungen in Strömungsintensität und Produktivität als Abbild der Wassermassen-Variabilität im äquatorialen Atlantik (ODP Sites 959 und 663): Ergebnisse aus Siltkorn-Analysen. 134 pages, Bremen, 2001.
- No. 188** **Uliana, E.**
Late Quaternary biogenic opal sedimentation in diatom assemblages in Kongo Fan sediments. 96 pages, Bremen, 2002.
- No. 189** **Esper, O.**
Reconstruction of Recent and Late Quaternary oceanographic conditions in the eastern South Atlantic Ocean based on calcareous- and organic-walled dinoflagellate cysts. 130 pages, Bremen, 2001.
- No. 190** **Wendler, I.**
Production and preservation of calcareous dinoflagellate cysts in the modern Arabian Sea. 117 pages, Bremen, 2002.
- No. 191** **Bauer, J.**
Late Cenomanian – Santonian carbonate platform evolution of Sinai (Egypt): stratigraphy, facies, and sequence architecture. 178 pages, Bremen, 2002.
- No. 192** **Hildebrand-Habel, T.**
Die Entwicklung kalkiger Dinoflagellaten im Südatlantik seit der höheren Oberkreide. 152 pages, Bremen, 2002.
- No. 193** **Hecht, H.**
Sauerstoff-Optopoden zur Quantifizierung von Pyritverwitterungsprozessen im Labor- und Langzeit-in-situ-Einsatz. Entwicklung - Anwendung – Modellierung. 130 pages, Bremen, 2002.
- No. 194** **Fischer, G. and cruise participants**
Report and Preliminary Results of RV METEOR-Cruise M49/4, Salvador da Bahia – Halifax, 4.4.-5.5.2001. 84 pages, Bremen, 2002.
- No. 195** **Gröger, M.**
Deep-water circulation in the western equatorial Atlantic: inferences from carbonate preservation studies and silt grain-size analysis. 95 pages, Bremen, 2002.
- No. 196** **Meinecke, G. and cruise participants**
Report of RV POSEIDON Cruise POS 271, Las Palmas - Las Palmas, 19.3.-29.3.2001. 19 pages, Bremen, 2002.
- No. 197** **Meggers, H. and cruise participants**
Report of RV POSEIDON Cruise POS 272, Las Palmas - Las Palmas, 1.4.-14.4.2001. 19 pages, Bremen, 2002. (out of print)
- No. 198** **Gräfe, K.-U.**
Stratigraphische Korrelation und Steuerungsfaktoren Sedimentärer Zyklen in ausgewählten Borealen und Tethyalen Becken des Cenoman/Turon (Oberkreide) Europas und Nordwestafrikas. 197 pages, Bremen, 2002.
- No. 199** **Jahn, B.**
Mid to Late Pleistocene Variations of Marine Productivity in and Terrigenous Input to the Southeast Atlantic. 97 pages, Bremen, 2002.
- No. 200** **Al-Rousan, S.**
Ocean and climate history recorded in stable isotopes of coral and foraminifers from the northern Gulf of Aqaba. 116 pages, Bremen, 2002.

- No. 201** **Azouzi, B.**
Regionalisierung hydraulischer und hydrogeochemischer Daten mit geostatistischen Methoden. 108 pages, Bremen, 2002.
- No. 202** **Spieß, V. and cruise participants**
Report and preliminary results of METEOR Cruise M 47/3, Libreville (Gabun) - Walvis Bay (Namibia), 01.06 - 03.07.2000. 70 pages, Bremen 2002.
- No. 203** **Spieß, V. and cruise participants**
Report and preliminary results of METEOR Cruise M 49/2, Montevideo (Uruguay) - Montevideo, 13.02 - 07.03.2001. 84 pages, Bremen 2002.
- No. 204** **Mollenhauer, G.**
Organic carbon accumulation in the South Atlantic Ocean: Sedimentary processes and glacial/interglacial Budgets. 139 pages, Bremen 2002.
- No. 205** **Spieß, V. and cruise participants**
Report and preliminary results of METEOR Cruise M49/1, Cape Town (South Africa) - Montevideo (Uruguay), 04.01.2001 - 10.02.2001. 57 pages, Bremen, 2003.
- No. 206** **Meier, K.J.S.**
Calcareous dinoflagellates from the Mediterranean Sea: taxonomy, ecology and palaeoenvironmental application. 126 pages, Bremen, 2003.
- No. 207** **Rakic, S.**
Untersuchungen zur Polymorphie und Kristallchemie von Silikaten der Zusammensetzung $Me_2Si_2O_5$ (Me:Na, K). 139 pages, Bremen, 2003.
- No. 208** **Pfeifer, K.**
Auswirkungen frühdiagenetischer Prozesse auf Calcit- und Barytgehalte in marinen Oberflächen-sedimenten. 110 pages, Bremen, 2003.
- No. 209** **Heuer, V.**
Spurenelemente in Sedimenten des Südatlantik. Primärer Eintrag und frühdiagenetische Überprägung. 136 pages, Bremen, 2003.
- No. 210** **Streng, M.**
Phylogenetic Aspects and Taxonomy of Calcareous Dinoflagellates. 157 pages, Bremen 2003.
- No. 211** **Boeckel, B.**
Present and past coccolith assemblages in the South Atlantic: implications for species ecology, carbonate contribution and palaeoceanographic applicability. 157 pages, Bremen, 2003.
- No. 212** **Precht, E.**
Advective interfacial exchange in permeable sediments driven by surface gravity waves and its ecological consequences. 131 pages, Bremen, 2003.
- No. 213** **Frenz, M.**
Grain-size composition of Quaternary South Atlantic sediments and its paleoceanographic significance. 123 pages, Bremen, 2003.
- No. 214** **Meggers, H. and cruise participants**
Report and preliminary results of METEOR Cruise M 53/1, Limassol - Las Palmas - Mindelo, 30.03.2002 - 03.05.2002. 81 pages, Bremen, 2003.
- No. 215** **Schulz, H.D. and cruise participants**
Report and preliminary results of METEOR Cruise M 58/1, Dakar - Las Palmas, 15.04..2003 - 12.05.2003. Bremen, 2003.
- No. 216** **Schneider, R. and cruise participants**
Report and preliminary results of METEOR Cruise M 57/1, Cape Town - Walvis Bay, 20.01. - 08.02.2003. 123 pages, Bremen, 2003.
- No. 217** **Kallmeyer, J.**
Sulfate reduction in the deep Biosphere. 157 pages, Bremen, 2003.
- No. 218** **Røy, H.**
Dynamic Structure and Function of the Diffusive Boundary Layer at the Seafloor. 149 pages, Bremen, 2003.
- No. 219** **Pätzold, J., C. Hübscher and cruise participants**
Report and preliminary results of METEOR Cruise M 52/2&3, Istanbul - Limassol - Limassol, 04.02. - 27.03.2002. Bremen, 2003.
- No. 220** **Zabel, M. and cruise participants**
Report and preliminary results of METEOR Cruise M 57/2, Walvis Bay - Walvis Bay, 11.02. - 12.03.2003. 136 pages, Bremen 2003.
- No. 221** **Salem, M.**
Geophysical investigations of submarine prolongations of alluvial fans on the western side of the Gulf of Aqaba-Red Sea. 100 pages, Bremen, 2003.

- No. 222** **Tilch, E.**
Oszillation von Wattflächen und deren fossiles Erhaltungspotential (Spiekerooger Rückseitenwatt, südliche Nordsee). 137 pages, Bremen, 2003.
- No. 223** **Frisch, U. and F. Kockel**
Der Bremen-Knoten im Strukturnetz Nordwest-Deutschlands. Stratigraphie, Paläogeographie, Strukturgeologie. 379 pages, Bremen, 2004.
- No. 224** **Kolonic, S.**
Mechanisms and biogeochemical implications of Cenomanian/Turonian black shale formation in North Africa: An integrated geochemical, millennial-scale study from the Tarfaya-LaAyoune Basin in SW Morocco. 174 pages, Bremen, 2004. Report online available only.
- No. 225** **Panteleit, B.**
Geochemische Prozesse in der Salz- Süßwasser Übergangszone. 106 pages, Bremen, 2004.
- No. 226** **Seiter, K.**
Regionalisierung und Quantifizierung benthischer Mineralisationsprozesse. 135 pages, Bremen, 2004.
- No. 227** **Bleil, U. and cruise participants**
Report and preliminary results of METEOR Cruise M 58/2, Las Palmas – Las Palmas (Canary Islands, Spain), 15.05. – 08.06.2003. 123 pages, Bremen, 2004.
- No. 228** **Kopf, A. and cruise participants**
Report and preliminary results of SONNE Cruise SO175, Miami - Bremerhaven, 12.11 - 30.12.2003. 218 pages, Bremen, 2004.
- No. 229** **Fabian, M.**
Near Surface Tilt and Pore Pressure Changes Induced by Pumping in Multi-Layered Poroelastic Half-Spaces. 121 pages, Bremen, 2004.
- No. 230** **Segl, M. , and cruise participants**
Report and preliminary results of POSEIDON cruise 304 Galway – Lisbon, 5. – 22. Oct. 2004. 27 pages, Bremen 2004
- No. 231** **Meinecke, G. and cruise participants**
Report and preliminary results of POSEIDON Cruise 296, Las Palmas – Las Palmas, 04.04 – 14.04.2003. 42 pages, Bremen 2005.
- No. 232** **Meinecke, G. and cruise participants**
Report and preliminary results of POSEIDON Cruise 310, Las Palmas – Las Palmas, 12.04 – 26.04.2004. 49 pages, Bremen 2005.
- No. 233** **Meinecke, G. and cruise participants**
Report and preliminary results of METEOR Cruise 58/3, Las Palmas - Ponta Delgada, 11.06 - 24.06.2003. 50 pages, Bremen 2005.
- No. 234** **Feseker, T.**
Numerical Studies on Groundwater Flow in Coastal Aquifers. 219 pages. Bremen 2004.
- No. 235** **Sahling, H. and cruise participants**
Report and preliminary results of R/V POSEIDON Cruise P317/4, Istanbul-Istanbul , 16 October - 4 November 2004. 92 pages, Bremen 2004.
- No. 236** **Meinecke, G. und Fahrtteilnehmer**
Report and preliminary results of POSEIDON Cruise 305, Las Palmas (Spain) - Lisbon (Portugal), October 28th – November 6th, 2004. 43 pages, Bremen 2005.
- No. 237** **Ruhland, G. and cruise participants**
Report and preliminary results of POSEIDON Cruise 319, Las Palmas (Spain) - Las Palmas (Spain), December 6th – December 17th, 2004. 50 pages, Bremen 2005.
- No. 238** **Chang, T.S.**
Dynamics of fine-grained sediments and stratigraphic evolution of a back-barrier tidal basin of the German Wadden Sea (southern North Sea). 102 pages, Bremen 2005.
- No. 239** **Lager, T.**
Predicting the source strength of recycling materials within the scope of a seepage water prognosis by means of standardized laboratory methods. 141 pages, Bremen 2005.
- No. 240** **Meinecke, G.**
DOLAN - Operationelle Datenübertragung im Ozean und Laterales Akustisches Netzwerk in der Tiefsee. Abschlußbericht. 42 pages, Bremen 2005.
- No. 241** **Guasti, E.**
Early Paleogene environmental turnover in the southern Tethys as recorded by foraminiferal and organic-walled dinoflagellate cysts assemblages. 203 pages, Bremen 2005.
- No. 242** **Riedinger, N.**
Preservation and diagenetic overprint of geochemical and geophysical signals in ocean margin sediments related to depositional dynamics. 91 pages, Bremen 2005.

- No. 243** **Ruhland, G. and cruise participants**
Report and preliminary results of POSEIDON cruise 320, Las Palmas (Spain) - Las Palmas (Spain), March 08th - March 18th, 2005. 57 pages, Bremen 2005.
- No. 244** **Inthorn, M.**
Lateral particle transport in nepheloid layers – a key factor for organic matter distribution and quality in the Benguela high-productivity area. 127 pages, Bremen, 2006.
- No. 245** **Aspetsberger, F.**
Benthic carbon turnover in continental slope and deep sea sediments: importance of organic matter quality at different time scales. 136 pages, Bremen, 2006.
- No. 246** **Hebbeln, D. and cruise participants**
Report and preliminary results of RV SONNE Cruise SO-184, PABESIA, Durban (South Africa) – Cilacap (Indonesia) – Darwin (Australia), July 08th - September 13th, 2005. 142 pages, Bremen 2006.
- No. 247** **Ratmeyer, V. and cruise participants**
Report and preliminary results of RV METEOR Cruise M61/3. Development of Carbonate Mounds on the Celtic Continental Margin, Northeast Atlantic. Cork (Ireland) – Ponta Delgada (Portugal), 04.06. – 21.06.2004. 64 pages, Bremen 2006.
- No. 248** **Wien, K.**
Element Stratigraphy and Age Models for Pelagites and Gravity Mass Flow Deposits based on Shipboard XRF Analysis. 100 pages, Bremen 2006.
- No. 249** **Krastel, S. and cruise participants**
Report and preliminary results of RV METEOR Cruise M65/2, Dakar - Las Palmas, 04.07. – 26.07.2005. 185 pages, Bremen 2006.
- No. 250** **Heil, G.M.N.**
Abrupt Climate Shifts in the Western Tropical to Subtropical Atlantic Region during the Last Glacial. 121 pages, Bremen 2006.
- No. 251** **Ruhland, G. and cruise participants**
Report and preliminary results of POSEIDON Cruise 330, Las Palmas – Las Palmas, November 21th – December 03rd, 2005. 48 pages, Bremen 2006.
- No. 252** **Mulitza, S. and cruise participants**
Report and preliminary results of METEOR Cruise M65/1, Dakar – Dakar, 11.06.- 1.07.2005. 149 pages, Bremen 2006.
- No. 253** **Kopf, A. and cruise participants**
Report and preliminary results of POSEIDON Cruise P336, Heraklion - Heraklion, 28.04. – 17.05.2006. 127 pages, Bremen, 2006.
- No. 254** **Wefer, G. and cruise participants**
Report and preliminary results of R/V METEOR Cruise M65/3, Las Palmas - Las Palmas (Spain), July 31st - August 10th, 2005. 24 pages, Bremen 2006.
- No. 255** **Hanebuth, T.J.J. and cruise participants**
Report and first results of the POSEIDON Cruise P342 GALIOMAR, Vigo – Lisboa (Portugal), August 19th – September 06th, 2006. Distribution Pattern, Residence Times and Export of Sediments on the Pleistocene/Holocene Galician Shelf (NW Iberian Peninsula). 203 pages, Bremen, 2007.
- No. 256** **Ahke, A.**
Composition of molecular organic matter pools, pigments and proteins, in Benguela upwelling and Arctic Sediments. 192 pages, Bremen 2007.
- No. 257** **Becker, V.**
Seeper - Ein Modell für die Praxis der Sickerwasserprognose. 170 pages, Bremen 2007.
- No. 258** **Ruhland, G. and cruise participants**
Report and preliminary results of Poseidon cruise 333, Las Palmas (Spain) – Las Palmas (Spain), March 1st – March 10th, 2006. 32 pages, Bremen 2007.
- No. 259** **Fischer, G., G. Ruhland and cruise participants**
Report and preliminary results of Poseidon cruise 344, leg 1 and leg 2, Las Palmas (Spain) – Las Palmas (Spain), Oct. 20th – Nov 2nd & Nov. 4th – Nov 13th, 2006. 46 pages, Bremen 2007.
- No. 260** **Westphal, H. and cruise participants**
Report and preliminary results of Poseidon cruise 346, MACUMA. Las Palmas (Spain) – Las Palmas (Spain), 28.12.2006 – 15.1.2007. 49 pages, Bremen 2007.
- No. 261** **Bohrmann, G., T. Pape, and cruise participants**
Report and preliminary results of R/V METEOR Cruise M72/3, Istanbul – Trabzon – Istanbul, March 17th – April 23rd, 2007. Marine gas hydrates of the Eastern Black Sea. 130 pages, Bremen 2007.
- No. 262** **Bohrmann, G., and cruise participants**
Report and preliminary results of R/V METEOR Cruise M70/3, Iraklion – Iraklion, 21 November – 8 December 2006. Cold Seeps of the Anaximander Mountains / Eastern Mediterranean. 75 pages, Bremen 2008.

- No. 263** **Bohrmann, G., Spiess, V., and cruise participants**
Report and preliminary results of R/V Meteor Cruise M67/2a and 2b, Balboa -- Tampico -- Bridgetown, 15 March -- 24 April, 2006. Fluid seepage in the Gulf of Mexico. Bremen 2008.
- No. 264** **Kopf, A., and cruise participants**
Report and preliminary results of Meteor Cruise M73/1: LIMA-LAMO (Ligurian Margin Landslide Measurements & Observatory), Cadiz, 22.07.2007 – Genoa, 11.08.2007. 170 pages, Bremen 2008.
- No. 265** **Hebbeln, D., and cruise participants**
Report and preliminary results of RV Pelagia Cruise 64PE284. Cold-water Corals in the Gulf of Cádiz and on Coral Patch Seamount (NE Atlantic). Portimão - Portimão, 18.02. - 09.03.2008. 90 pages, Bremen 2008.
- No. 266** **Bohrmann, G. and cruise participants**
Report and preliminary results of R/V Meteor Cruise M74/3, Fujairah – Male, 30 October - 28 November, 2007. Cold Seeps of the Makran subduction zone (Continental margin of Pakistan). 161 pages, Bremen 2008.
- No. 267** **Sachs, O.**
Benthic organic carbon fluxes in the Southern Ocean: Regional differences and links to surface primary production and carbon export. 143 pages, Bremen, 2008.
- No. 268** **Zonneveld, K. and cruise participants**
Report and preliminary results of R/V POSEIDON Cruise P339, Piräus - Messina, 16 June - 2 July 2006. CAPPUCCINO - Calabrian and Adriatic palaeoproductivity and climatic variability in the last two millenia. 61 pages, Bremen, 2008.
- No. 269** **Ruhland, G. and cruise participants**
Report and preliminary results of R/V POSEIDON Cruise P360, Las Palmas (Spain) - Las Palmas (Spain), Oct. 29th - Nov. 6th, 2007. 27 pages, Bremen, 2008.
- No. 270** **Ruhland, G., G. Fischer and cruise participants**
Report and preliminary results of R/V POSEIDON Cruise 365 (Leg 1+2). Leg 1: Las Palmas - Las Palmas, 13.4. - 16.4.2008. Leg 2: Las Palmas - Las Palmas, 18.4. - 29.4.2008. 40 pages, Bremen, 2009.
- No. 271** **Kopf, A. and cruise participants**
Report and preliminary results of R/V POSEIDON Cruise P386: NAIL (Nice Airport Landslide), La Seyne sur Mer, 20.06.2009 – La Seyne sur Mer, 06.07.2009. 161 pages, Bremen, 2009.
- No. 272** **Freudenthal, T., G. Fischer and cruise participants**
Report and preliminary results of Maria S. Merian Cruise MSM04/4 a & b, Las Palmas (Spain) – Las Palmas (Spain), Feb 27th – Mar 16th & Mar 19th – Apr 1st, 2007. 117 pages, Bremen 2009.
- No. 273** **Hebbeln, D., C. Wienberg, L. Beuck, A. Freiwald, P. Wintersteller and cruise participants**
Report and preliminary results of R/V POSEIDON Cruise POS 385 "Cold-Water Corals of the Alboran Sea (western Mediterranean Sea)", Faro - Toulon, May 29 - June 16, 2009. 79 pages, Bremen 2009.
- No. 274** **Zonneveld, K. and cruise participants**
Report and preliminary results of R/V Poseidon Cruises P 366-1 and P 366-2, Las Palmas - Las Palmas - Vigo, 03 -19 May 2008 and 22 -30 May 2008. PERGAMOM Proxy Education and Research cruise off Galicai, Morocco and Mauretania. 47 pages, Bremen 2010.
- No. 275** **Wienberg, C. and cruise participants**
Report and preliminary results of RV POSEIDON cruise POS400 "CORICON - Cold-water corals along the Irish continental margin", Vigo - Cork, June 29 - July 15 2010. 46 pages, Bremen 2010.
- No. 276** **Villinger, H. and cruise participants**
Report and preliminary results of R/V Sonne Cruise SO 207, Caldera-Caldera, 21 June -13 July, 2010. SeamountFlux: Efficient cooling in young oceanic crust caused by circulation of seawater through seamounts (Guatemala Basin, East Pacific Ocean). 161 pages, Bremen 2010.
- No. 277** **Fischer, G. and cruise participants**
Report and preliminary results of RV POSEIDON Cruise POS 396, Las Palmas - Las Palmas (Spain), 24 February - 8 March 2010. 22 pages, Bremen 2011.
- No. 278** **Bohrmann, G. and cruise participants**
Report and preliminary results of RV MARIA S. MERIAN Cruise MSM 15/2, Istanbul (Turkey) – Piraeus (Greece), 10 May - 2 June 2010. Origin and structure of methane, gas hydrates and fluid flows in the Black Sea. 130 pages, Bremen 2011.
- No. 279** **Hebbeln, D. and cruise participants**
Report and preliminary results of RV SONNE Cruise SO-211, Valparaíso - Valparaíso, 2 November – 29 November 2010. ChiMeBo. Bremen 2011.
- No. 280** **Bach, W. and cruise participants**
Report and preliminary results of RV SONNE Cruise SO 216, Townsville (Australia) - Makassar (Indonesia), June 14 – July 23, 2011. BAMBUS, Back-Arc Manus Basin Underwater Solfataras. 87 pages, Bremen 2011.

- No. 281** **Bohrmann, G. and cruise participants**
Report and preliminary results of RV METEOR Cruise M84/2, Istanbul – Istanbul, 26 February – 02 April, 2011. Origin and Distribution of Methane and Methane Hydrates in the Black Sea. 164 pages, Bremen 2011.
- No. 282** **Zonneveld, K. and cruise participants**
Report and preliminary results of R/V POSEIDON Cruise P398, Las Palmas – Lissabon, 1 – 16 April 2010. PAPOCA, Production and preservation of organic carbon in relationship to dust input and nepheloid layers in the upwelling area off NW Africa. 33 pages, Bremen 2011.
- No. 283** **Hanebuth, T. J. J. and cruise participants**
Report and preliminary results of RV METEOR Cruise M84/4, GALIOMAR III, Vigo – Vigo, 1st – 28th May, 2011. 139 pages, Bremen 2012.
- No. 284** **Kopf, A. and cruise participants**
Report and preliminary results of RV POSEIDON Cruise P410: MUDFLOW (Mud volcanism, Faulting and Fluid Flow on the Mediterranean Ridge Accretionary Complex), Heraklion / Greece, 12.03.2011 – Taranto / Italy, 01.04.2011. 128 pages, Bremen 2012.
- No. 285** **Krastel, S., G. Wefer and cruise participants**
Report and preliminary results of RV METEOR Cruise M78/3. Sediment transport off Uruguay and Argentina: From the shelf to the deep sea. 19.05.2009 – 06.07.2009, Montevideo (Uruguay) – Montevideo (Uruguay). 79 pages, Bremen 2012.
- No. 286** **Kopf, A. and cruise participants**
Report and preliminary results of RV POSEIDON Cruise P429. MEDFLUIDS: Slope Stability, Mud volcanism, Faulting and Fluid Flow in the Eastern Mediterranean Sea (Cretan Sea, Mediterranean Ridge) and Ligurian Margin (Nice slope), Heraklion / Greece, 22.03.2012 – La Seyne sur Mer / France, 06.04.2012. 80 pages, Bremen 2012.
- No. 287** **Fischer, G. and cruise participants**
Report and preliminary results of RV POSEIDON Cruise P425. Las Palmas – Las Palmas, 16.01.2012 – 30.01.2012. 32 pages, Bremen 2012.
- No. 288** **Mohtadi, M. and cruise participants**
Report and preliminary results of RV SONNE Cruise SO 221. INVERS. Hong Kong – Hong Kong, 17.05.2012 – 07.06.2012. 168 pages, Bremen 2012.
- No. 289** **Mohtadi, M. and cruise participants**
Report and preliminary results of RV SONNE Cruise SO 223T. TransGeoBiOc. Busan – Suva, 09.09.2012 – 08.10.2012. 47 pages, Bremen 2012.