

**Figure 1:** Proposed tows for sandeel larvae using the dual bongo net. Stations 1-5 will be visited during the outward leg of the trip.

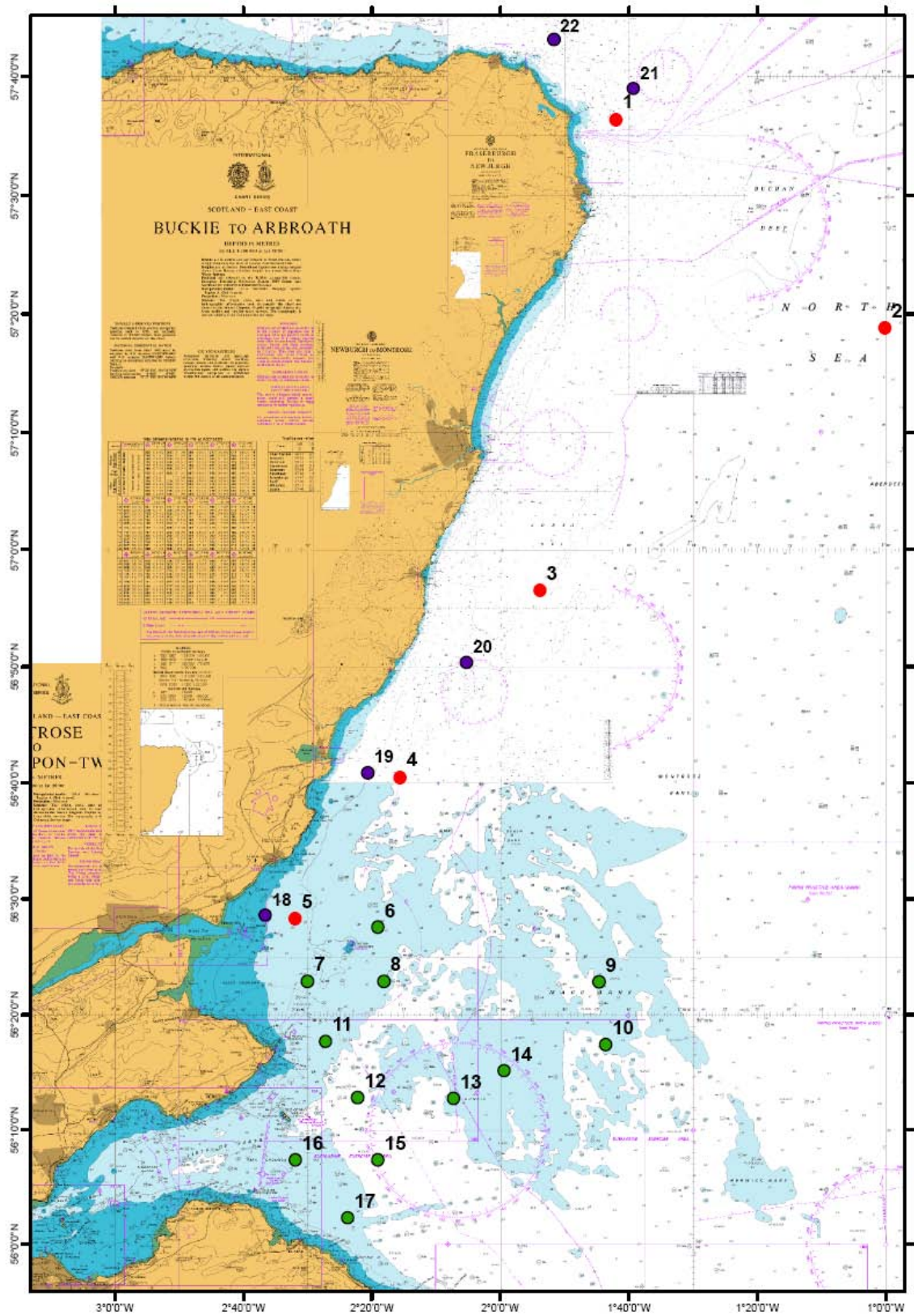


Figure 2: Sandeel dredge and grab stations (red boxes)

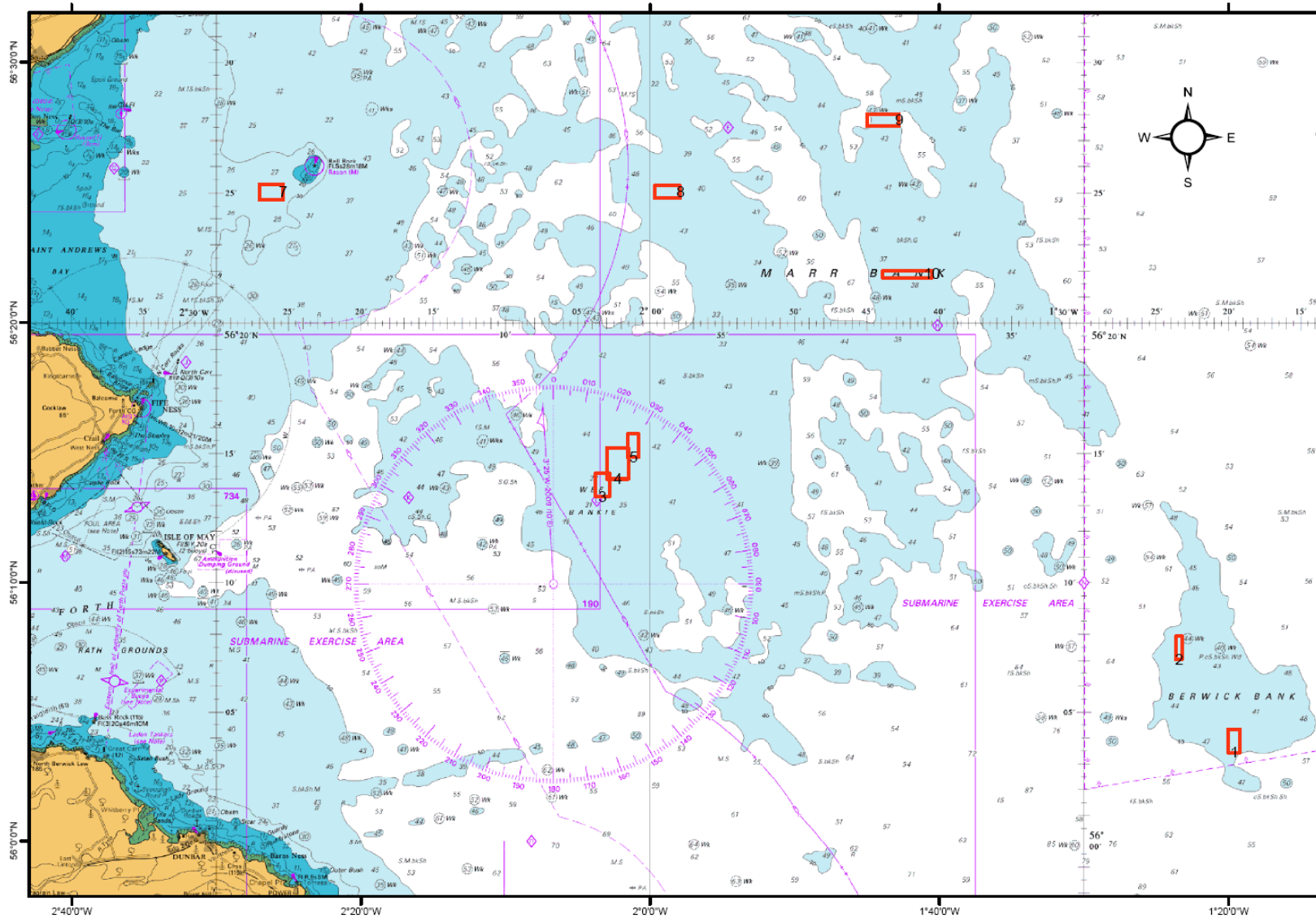


Figure 3: Wee Bankie / Marr Bank / Firth of Forth / St Andrews Bay acoustic track (red line)

