

Figure 1.1. Location map of the *CD167* work area in the central North Atlantic, on the Mid-Atlantic Ridge axis SW of the Azores archipelago. (*Etopo 2' W.H.F. Smith & D.T. Sandwell, 1997*)

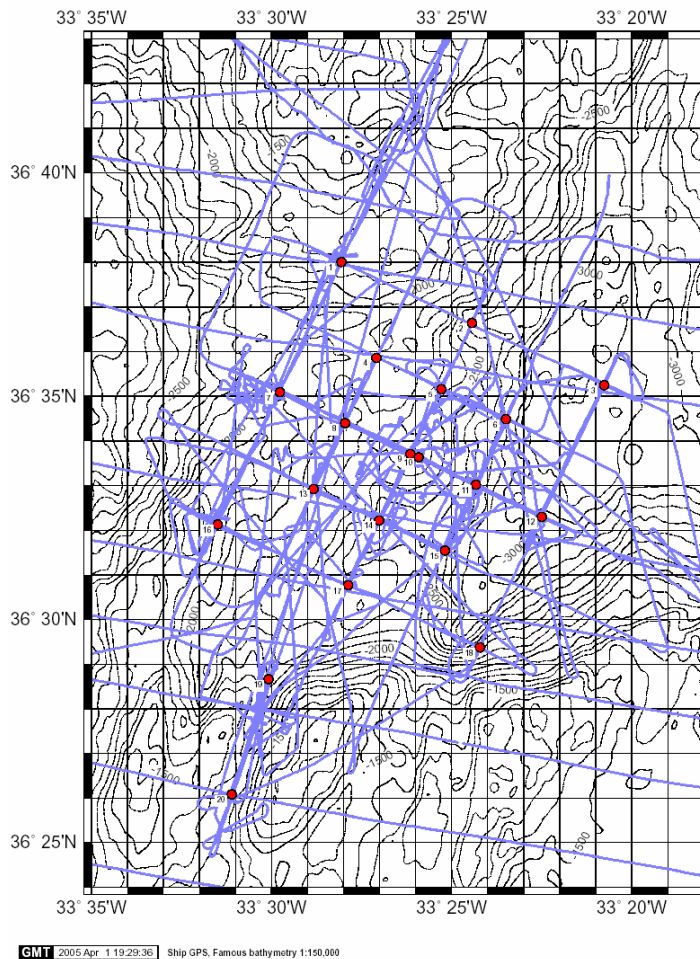


Fig. 4.3. GPS derived track chart for all CD-167 scientific operations, overlaid on swath bathymetric contours and planned receiver positions (red symbols).