

FIGURE 1: Map showing stations fished with GOV trawl with rockhopper ground gear (solid triangles) and standard ground gear (solid circles).

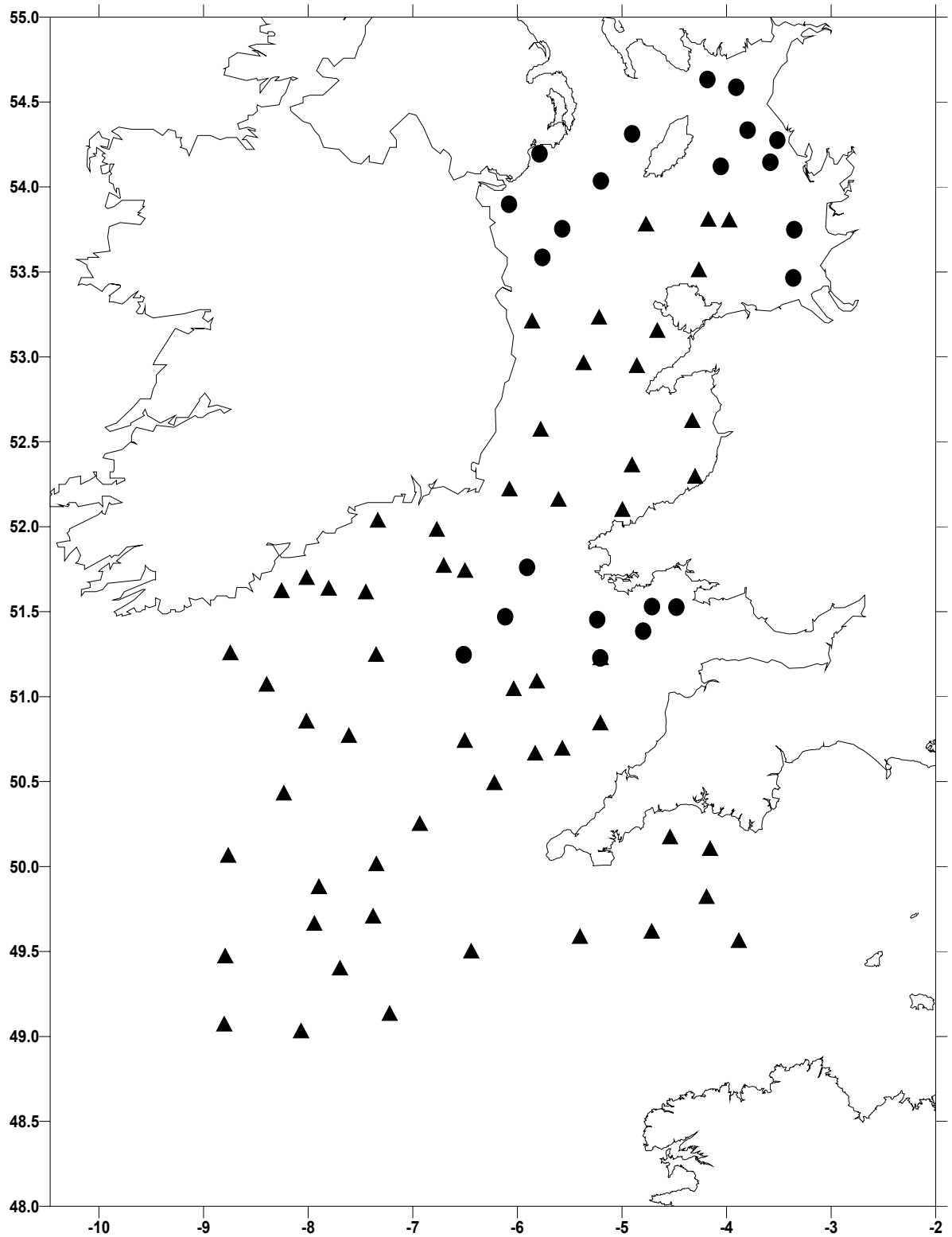


FIGURE 2: Study area indicating sites sampled with 2m-beam trawl (open circles), and shippek grab (solid triangles).

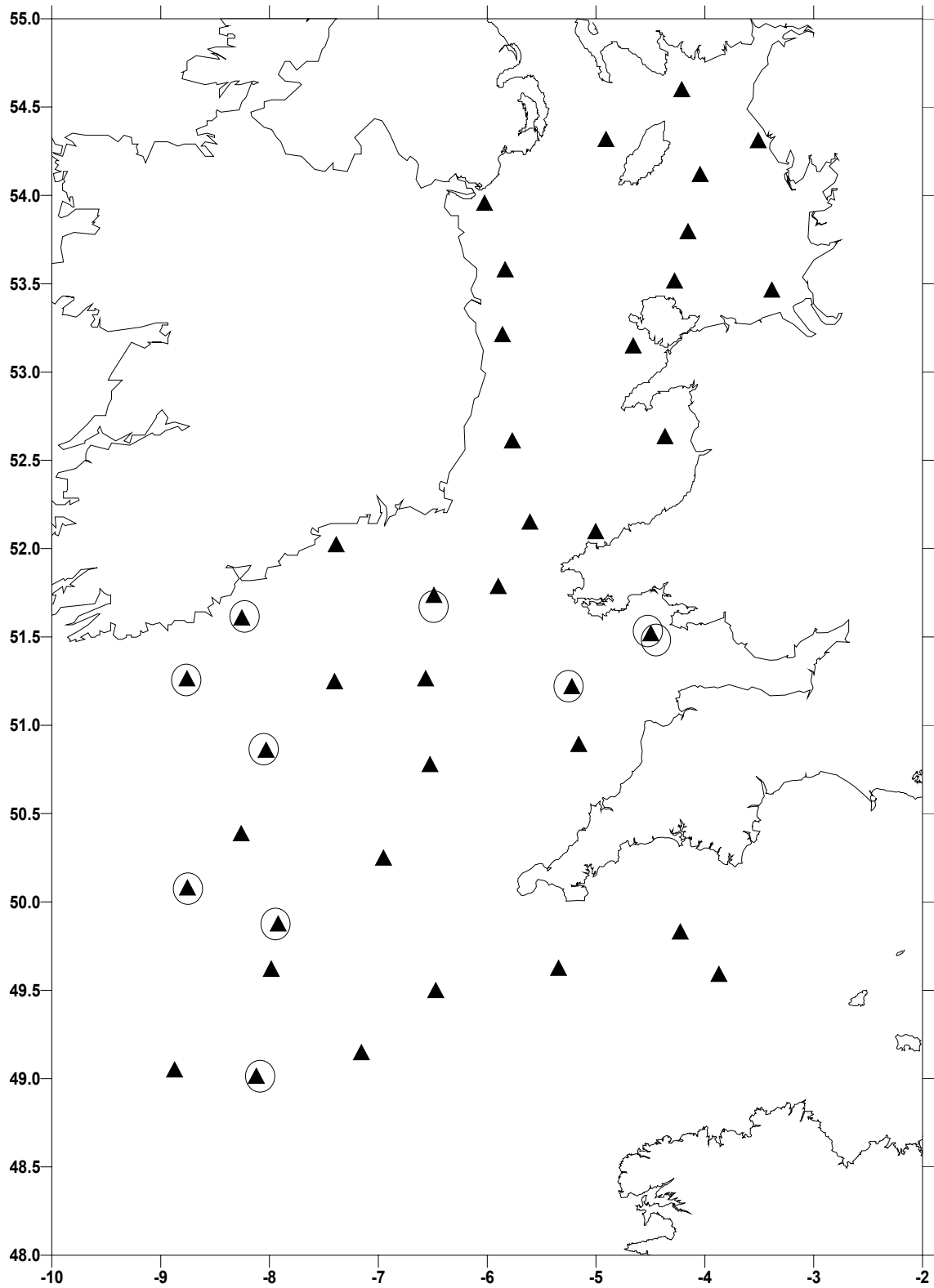


FIGURE 3: Distribution and relative abundance (kg per hour) of cod *Gadus morhua*, haddock *Melanogrammus aeglefinus*, whiting *Merlangius merlangus* and hake *Merluccius merluccius*.

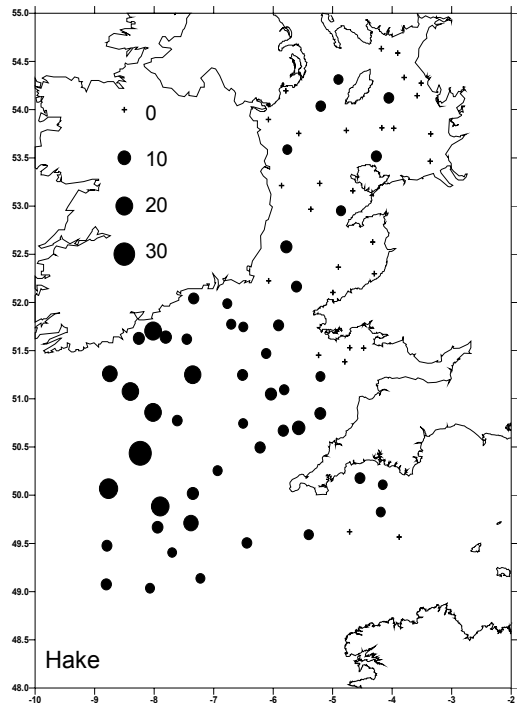
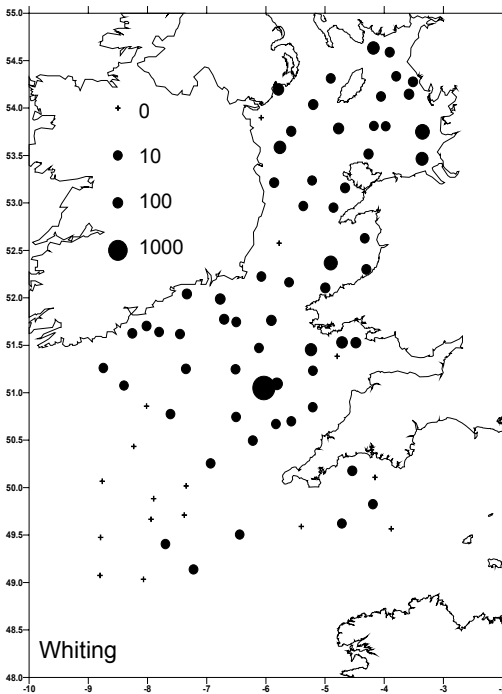
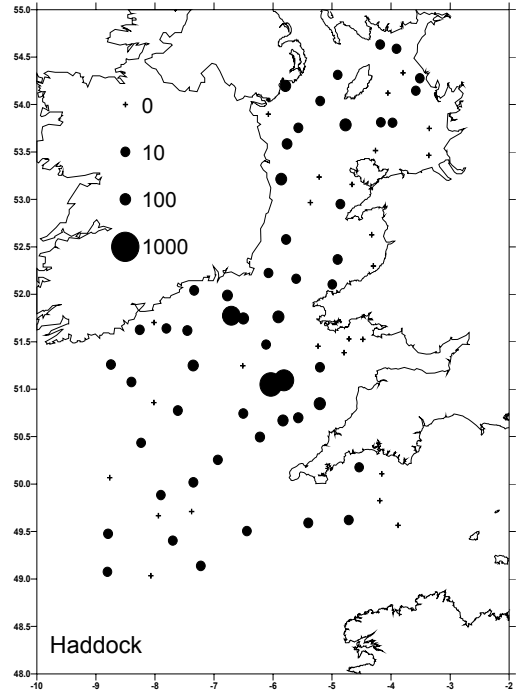
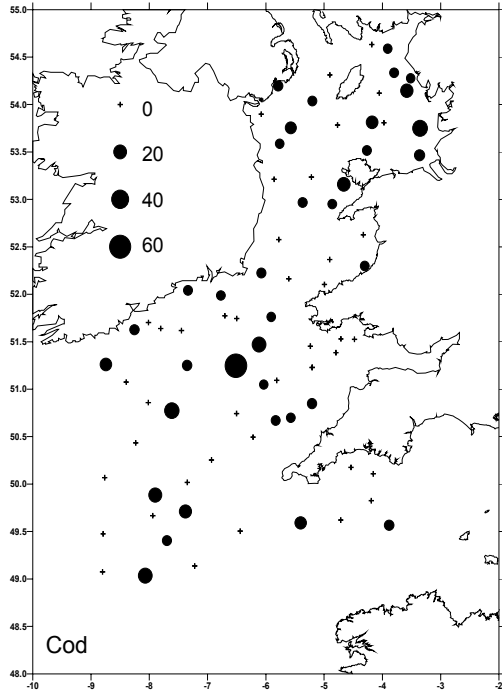


FIGURE 4: Distribution and relative abundance (kg per hour) of anglerfish *Lophius piscatorius*, lemon sole *Microstomus kitt*, megrim *Lepidorhombus whiffiagonis* and plaice *Pleuronectes platessa*

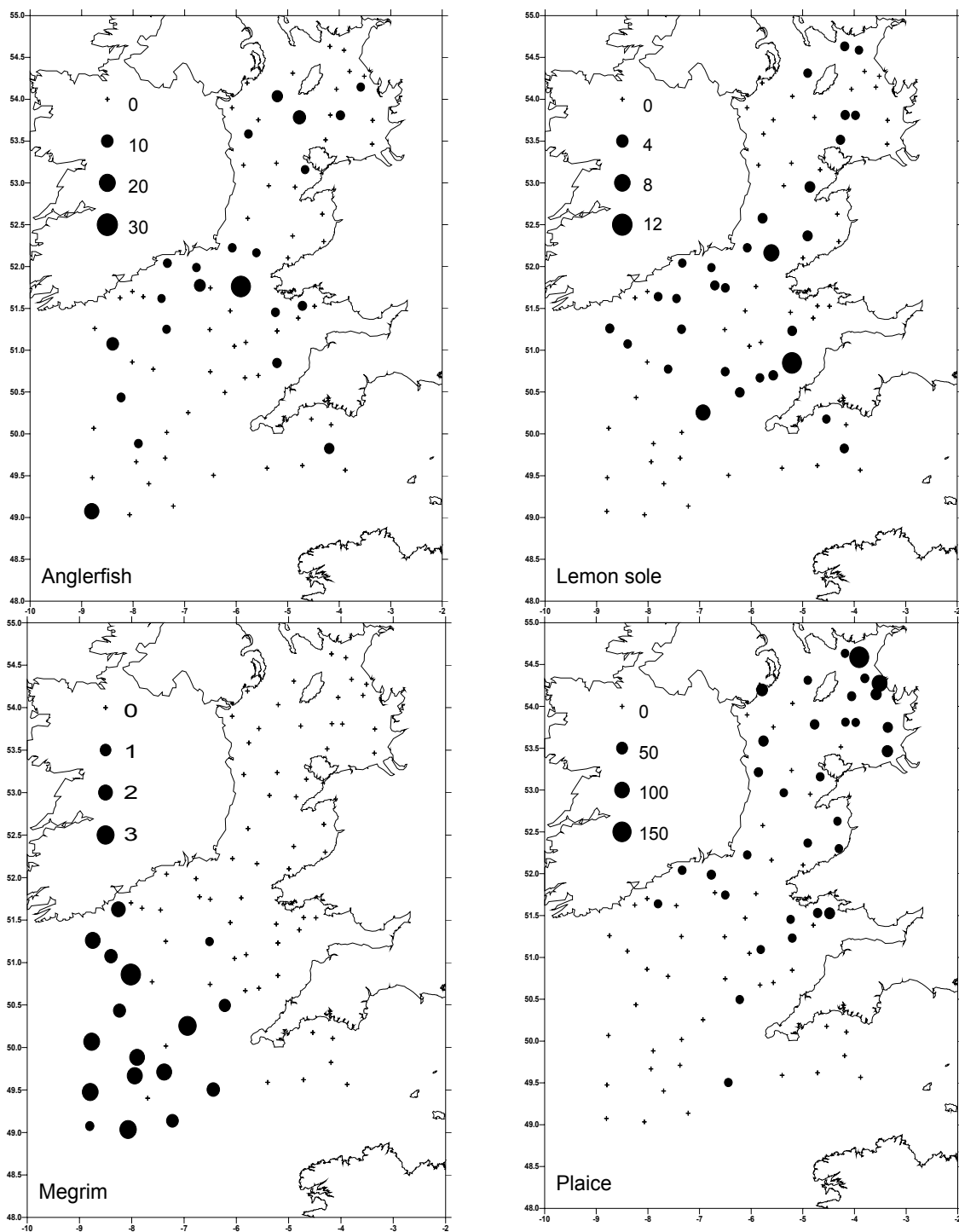


FIGURE 5: Relationship between fecundity and total length of spurdog *Squalus acanthias* in the Irish Sea

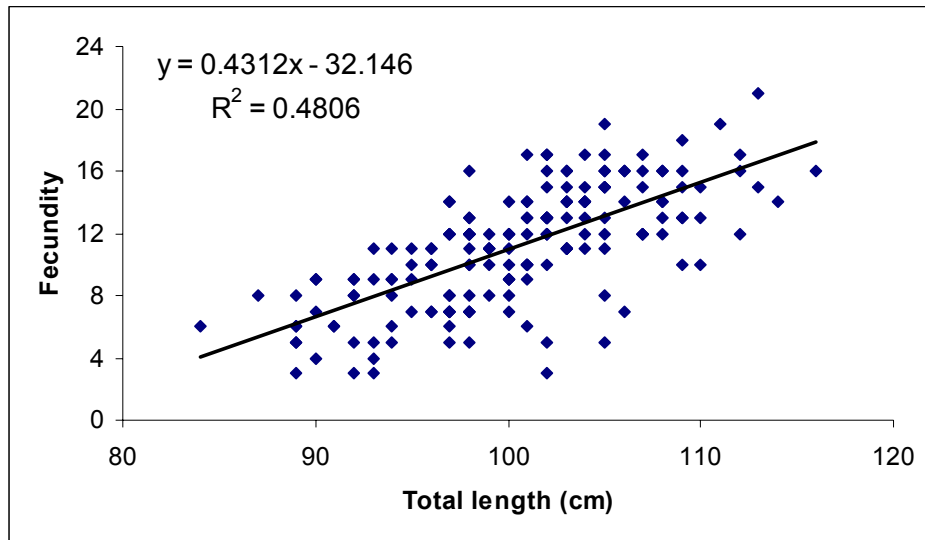


FIGURE 6: Study area and sites where elasmobranchs were tagged and released.

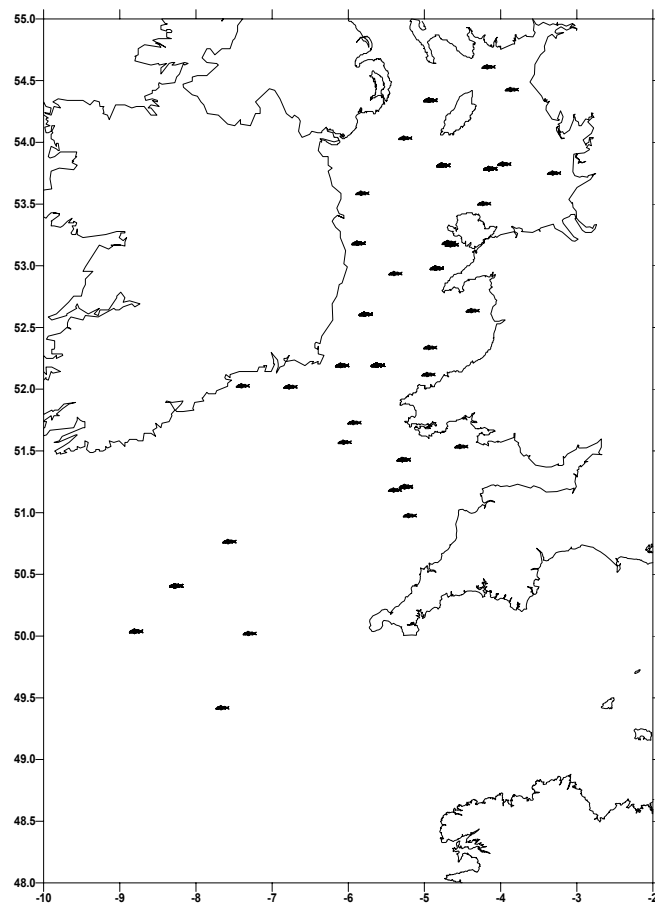


FIGURE 7: Relative abundance of scallop *Pecten maximus* in the eastern English Channel (maximum bubble size = 170 individuals)

