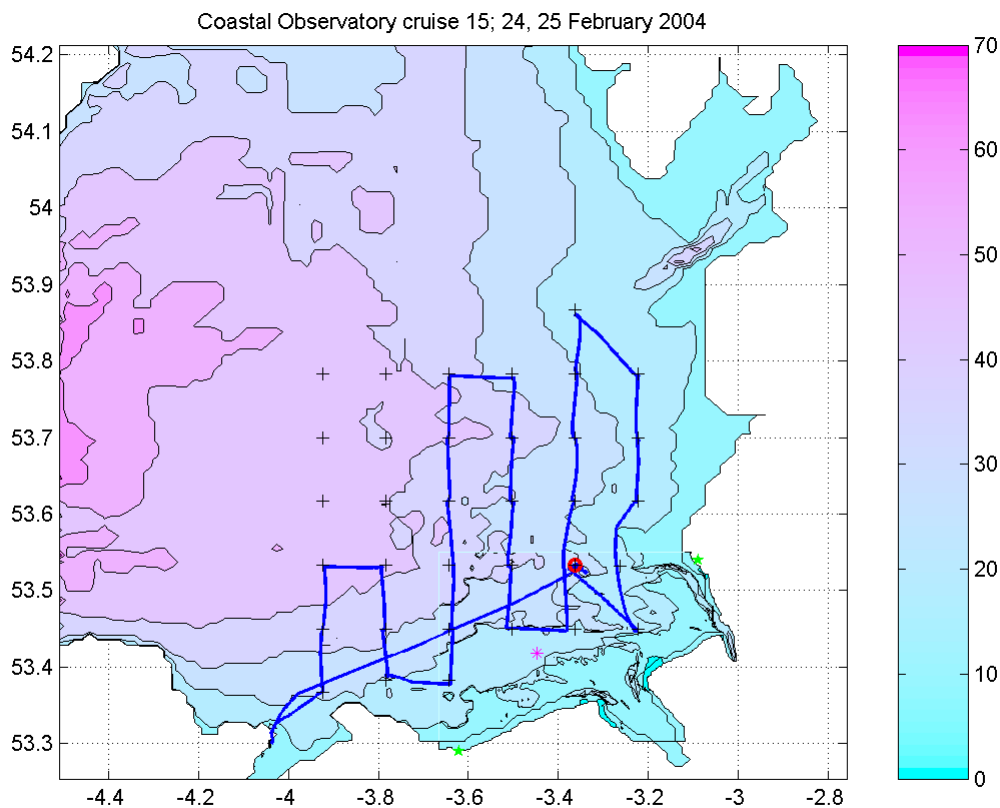


order, 2-9, 11-25, 32-34. Other stations were missed due to time constraints and rapidly deteriorating weather conditions (Winds from the North, force 7).

Temperatures varied between 5.5°C (inshore) and 7.4°C (offshore) and salinities between 30.0 and 33.8.

Surface sampling was switched off at 16:25, near Puffin Island. RV Prince Madog was alongside at Menai Bridge at 17:30. Most of the mooring objectives were accomplished and most of the CTD sites were visited. NNW winds ranged from force 5-7 (force 3 at the southern end of the survey) during the cruise with large waves.

Figure 1. Cruise track



4. Moorings (times in GMT)

4.2 The set up of the recovered instruments was as follows:

a) Mean ADCP 600 kHz RDI 3644; battery case 3070.

Mode 1: 100 pings every 10 minutes (velocity standard deviation 0.007 m s^{-1}).

35 x 1 m bins (2.65 – 36.65 m above the bed).

Beam co-ordinates - speeds, correlation, echo intensity, % good.

Sound velocity calculated from temperature, depth and salinity of 32.

Fitted with a pressure sensor and 1 Gbyte memory; hourly wave recording enabled.

Clock set at 14:08:00 on 16 December 2003, delayed start 07:00:00 on 17 December.

Stopped at 14:49 24 February 2004.