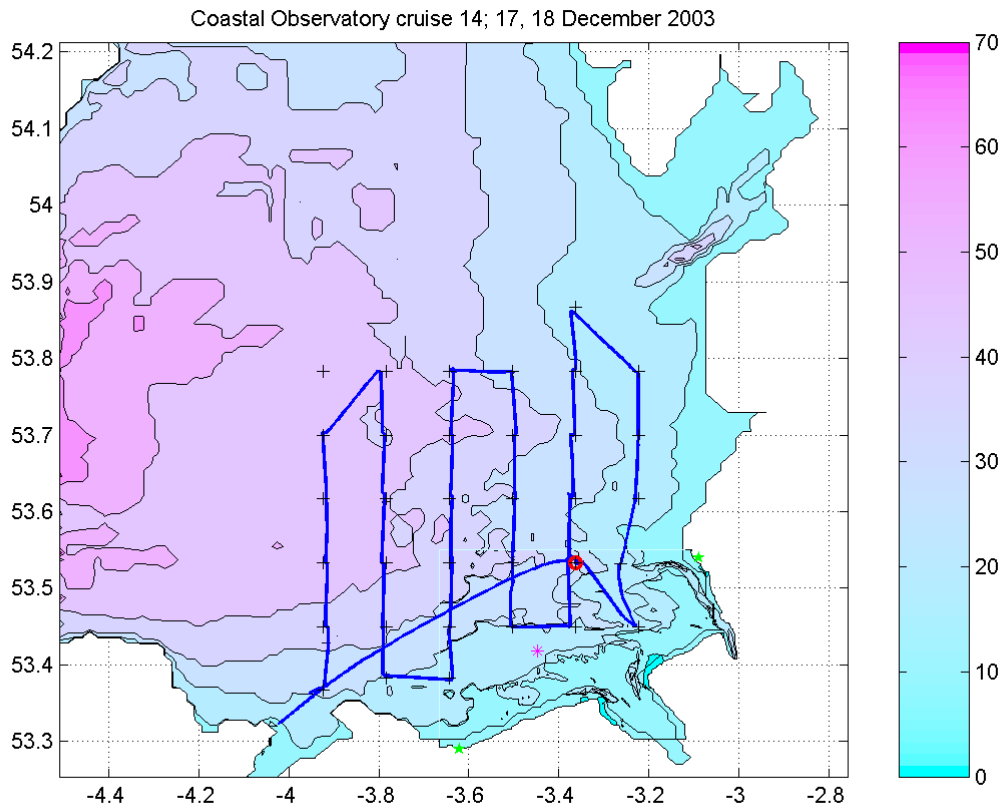


Figure 1. Cruise track



4. Moorings (times in GMT)

4.2 The set up of the recovered instruments was as follows:

a) Mean ADCP 600 kHz RDI 2391; battery case 0068.

Mode 1: 100 pings every 10 minutes (velocity standard deviation 0.007 m s^{-1}).

35 x 1 m bins (2.65 – 36.65 m above the bed).

Beam co-ordinates - speeds, correlation, echo intensity, % good.

Sound velocity calculated from temperature, depth and salinity of 32.

Fitted with a pressure sensor and 1 Gbyte memory; hourly wave recording enabled.

Clock set at 13:55:10 on 27 October 2003, delayed start 06:00:00 on 28 October; checked.

Stopped 17 December 2003, at 22:52, clock is 1 minute 38 seconds fast.

Aanderaa pressure recorder BPR 444, DSU 8123: 10 minute sampling, Clock set at 14:27:00 on 27 October 2003, started 14:30 on 27 October, 2003; first reading at 14:30:45.

Last reading at 00:10:50 (approx) on 18 December 2003, switched off at 00:12:10. Clock is 1 minute slow.

25 cm Sea-Tech Transmissometer, ST557, recording in Aanderaa logger (RCM7 11814 /DSU 8122) fitted with temperature and conductivity sensors. 10 minute sampling, clock set at 15:42:30 on 27 October, started at 15:50:00 on 27 October 2003.