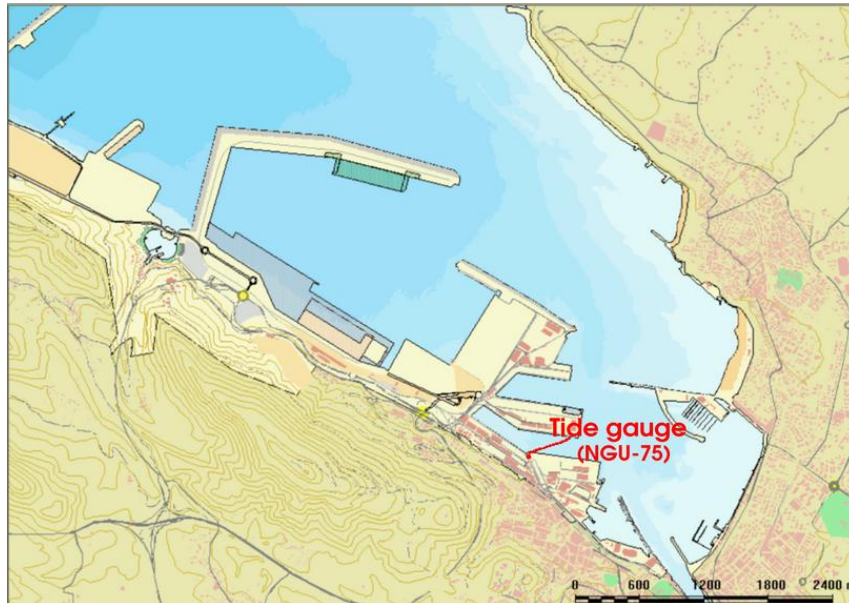


## Bilbao site history



## History summary

<b>Station name</b>	Bilbao
<b>Country</b>	Spain
<b>Latitude of measuring point</b>	43.3372
<b>Longitude of measuring point</b>	-3.0358
<b>Datum reference</b>	All data are to Bilbao Harbour Datum.
<b>Time reference</b>	Unknown
<b>Contributor</b>	Puertos del Estado
<b>Instrument type</b>	Miros radar

<b>Site of measuring point</b>	The tide gauge is located in the Santurce harbour, at the end of Reina Victoria Quay. The LPTM or data logger is located inside a hub close to the PVC tube with the transducer and data are transmitted by radio in real time to the Harbour Office.
<b>Observational periods</b>	1992 onwards

### Benchmark descriptions

<b>Benchmark</b>	<b>Grid reference</b>	<b>Height above TGZ (m)</b>	<b>Description</b>
TGBM	NGU-75	6.968	Rivet on the floor in the North front of the hub.
Aux1	NGU-70	8.364	Rivet North corner of train station building in Santurce.

TGZ = Harbour Datum

TGZ = 2.016m below NMMA (Alicante Mean Sea Level)

### Data quality

Sea level data have been quality controlled and processed according to Spanish Harbours procedures.

---