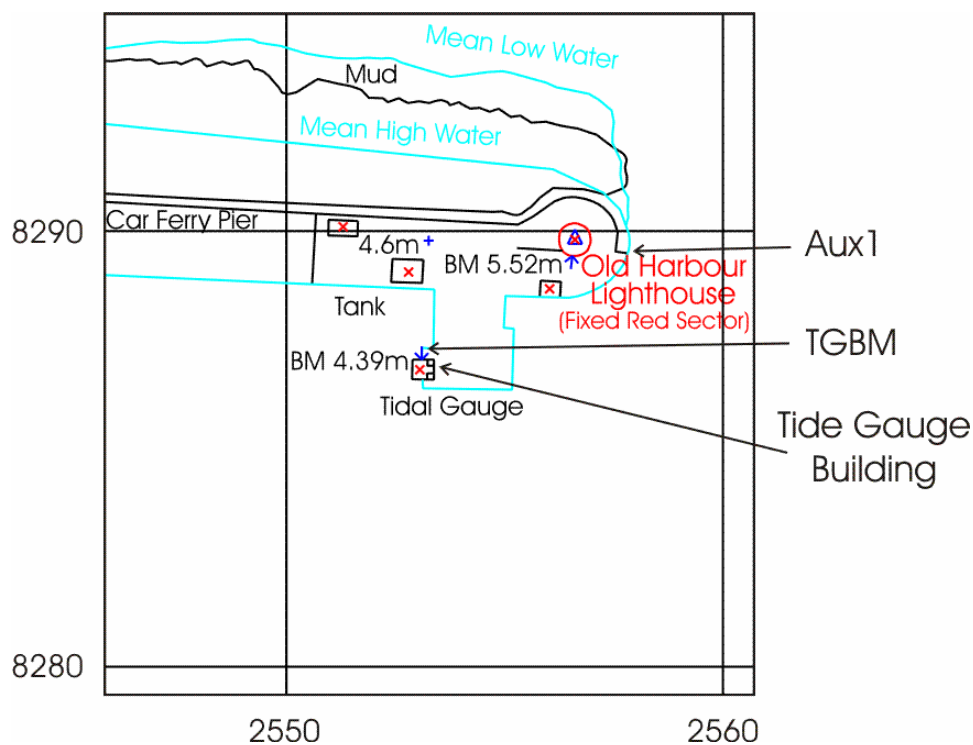


Holyhead site history



©Crown copyright. All rights reserved NERC 100017897 2007



History summary

Station name	Holyhead
Country	Wales, U.K.
Latitude of measuring point	1978 onwards: 53° 18' 50.2" N Prior to 1978: 53° 18' 28" N
Longitude of measuring point	1978 onwards: 04° 37' 13.5" W Prior to 1978: 04° 37' 52" W
OS grid ref. of measuring point	1978 onwards: SH 2553 8287 Prior to 1978: SH 2479 8221
Datum reference	All data refer to Admiralty Chart Datum

	(ACD) ACD = ODN -3.05m
Time reference	GMT (hours 00-23)
Contributor	Tide Gauge Inspectorate (TGI), Proudman Oceanographic Laboratory, Joseph Proudman Building, 6 Brownlow Street, Liverpool, L3 5DA, U.K.
Instrument type	1958 to 1977 - Lea gauge. 1978 to 1984 - Gauge relocated. Two stilling wells with Munro and Ott recorder. 1984 - DATARING system installed. The primary gauge is a bubbler gauge and the backup gauge is a Munro float gauge.
Site of measuring point	The tide gauge building and measuring points are attached to the jetty face directly below Tide Gauge building.
Position of tide gauge building	SH 2553 8287 - Brick Tide Gauge building S side Salt Island Jetty, adjacent to Lighthouse
Observational periods	1964-1969, 1981, 1983, 1985, 1988, 1990-1991, 1995-2011

Benchmark descriptions

Benchmark	OS grid ref.	Description	Height above ODN (m)
TGBM	SH 2553 8287	Bolt on concrete foundation, N side of tide gauge building.	4.386
Aux1	SH 2556 8289	Cut mark on harbour lighthouse S face	5.515
Aux2	N/A	DESTROYED	N/A
Aux3	SH 2510 8296	Bolt on N face Salt Island Bridge	4.564
BM	SH 2520 8296	Cut mark SW corner Customs House	5.286

TGZ = Admiralty Chart Datum (ACD)

TGZ = 3.05m below Ordnance Datum Newlyn (ODN)

TGZ = 7.436m below TGBM

Ordnance Datum Newlyn (ODN) is based on mean sea level at Newlyn between 1915 and 1921 (inclusive).

Data quality

The data have been screened and quality controlled using BODC procedures and standards.