

NOTIFICATION OF PROPOSED RESEARCH CRUISE

PART A: GENERAL

1. NAME OF RESEARCH SHIP: "JOHAN HJORT" CRUISE NO. 2007211
2. DATES OF CRUISE From: 27 September 2007 To: 10 October 2007
3. OPERATING AUTHORITY: Institute of Marine Research
P.O.Box 1870 Nordnes
N-5024 BERGEN NORWAY

TELEPHONE: 47-55238500
TELEFAX : 47-55238531
TELEX: 42297 OCEAN N
4. OWNER
(if different from
no. 3)
5. PARTICULARS OF SHIP: Name: "JOHAN HJORT"

Nationality: Norwegian

Overall length: 64.5 metres

Maximum draught: 6.4 metres

Net tonnage: 548 Gross: 1828

Propulsion: Diesel

Call sign: L D G J
Vessels communication:
Phone (Satcom): +47 55 90 64 00
Fax (Satcom): +47 55 90 64 01
Registration port and number
(if registered fishing vessel):
Bergen
6. CREW

Name of master:

Number of crew: 14

7. SCIENTIFIC PERSONNEL Name and adress of scientist in charge: Rolf J. Korneliussen
*Institute of Marine Research
P.O.box 1870 Nordnes
N-5024 BERGEN NORWAY*
- Tel/telex/fax no.: *(47)55 23 85 00/42297/(47)55 23 85 31*
- No. of scientists: *7(current estimate)*
8. GEOGRAPHICAL AREA IN WHICH SHIP WILL OPERATE (with reference to latitude and longitude)

59°N-62°N and 1°W-4°E (see attached map)
9. BRIEF DESCRIPTION OF PURPOSE OF CRUISE

*Acoustic investigations of abundance and distribution of Atlantic mackerel (*Scomber scombrus* L.)*
10. DATES AND NAMES OF INTENDED PORTS OF CALL

Lerwick 2007.10.04. (Call to Lerwick depends on weather).
11. ANY SPECIAL REQUIREMENTS AT PORTS OF CALL

None

NOTIFICATION OF PROPOSED RESEARCH CRUISE

PART B: DETAIL

1. NAME OF RESEARCH SHIP: "JOHAN HJORT" CRUISE NO. 2007211

2. DATES OF CRUISE From 2007.09.27 To: 2007.10.10

3. a) PURPOSE OF RESEARCH

Acoustic investigations of abundance and distribution of Atlantic mackerel (Scomber scombrus L.)

b) GENERAL OPERATIONAL METHODS (including full description of any fish gear, trawl type, mesh size, etc.)

WP2 and MOCNESS Plankton sampler

Pelagic trawl

Bottom trawl

CTD sonde

4. ATTACH CHART showing (on an appropriate scale) the geographical area of intended work, positions of intended stations, tracks of survey lines, positions of moored/seabed equipment, areas to be fished

5. a) TYPES OF SAMPLES REQUIRED (e.g., geological/water/plankton/fish/radionuclide.

Water, plankton, fish.

b) METHODS OF OBTAINING SAMPLES (e.g., dredging/coring/drilling/fishing, etc. When using fishing gear, indicate fish stocks being worked, quantity of each species required, and quantity of fish to be retained on board

Pelagic trawl and plankton net. Some bottom trawls.

6. DETAILS OF MOORED EQUIPMENT *None*

<u>Dates</u>		<u>Description</u>	<u>Depth</u>	<u>Latitude</u>	<u>Longitude</u>
<u>Laying</u>	<u>Recovery</u>				

7. ANY HAZARDOUS MATERIALS (chemicals/explosives/gases/radioactives, etc.

(Use separate sheet if necessary)

a) Type and trade name *NIL*

b) Chemical content (and formula) *NIL*

c) IMO IMDG code (reference and UN no.) *NIL*

d) Quantity and method of storage on board *NIL*

e) If explosives give date(s) of detonation *NIL*

- Method of detonation
- Position of detonation
- Frequency of detonation
- Depth of detonation
- Size of explosive charge in kg.

8. DETAIL AND REFERENCE OF

a) Any relevant previous/future cruises

Annual cruises every year since 1999, the last one in 2006. Some years together with FRV "Scotia" of UK.

b) Any previously published research data relating to the proposed cruise

Cruise reports. See e.g.:

Korneliussen, R., Skagen, D. W., and Slotte, A. 2005. Cruise summary report 2004113. Institute of Marine Research, Bergen, Norway. ISSN 1503-6294/Nr. 3 2005 mackerel. 18 pp.

(http://www.imr.no/produkter/publikasjoner/toktrapporter/toktrapporter_2005. Document: Nr. 3_CruiseSummaryReport_2004113_mackerel.pdf).

9. NAMED AND ADDRESSES OF SCIENTISTS OF THE COASTAL STATE(S) IN WHOSE WATERS THE PROPOSED CRUISE TAKES PLACE WITH WHOM PREVIOUS CONTACT HAS BEEN MADE

NIL

10. STATE

a) Whether visits to the ship in port by scientists of the coastal state concerned will be acceptable (Yes/No)

YES

b) Participation of an observer from the coastal state for any part of the cruise together with the dates and the ports for embarkation and disembarkation

For further details for embarkation and disembarkation, contact Rolf J Korneliussen

c) When research data from the intended cruise is likely to be made available to the coastal state and by what

means

The data will be reported to ICES in 2007.

PART C. SCIENTIFIC EQUIPMENT

Complete the following table
using a separate page for
each coastal state

Coastal state: UK


Port call: Lerwick (call to Lerwick depends on weather)

Dates: 04.10.2007

Indicate "YES" or "NO"

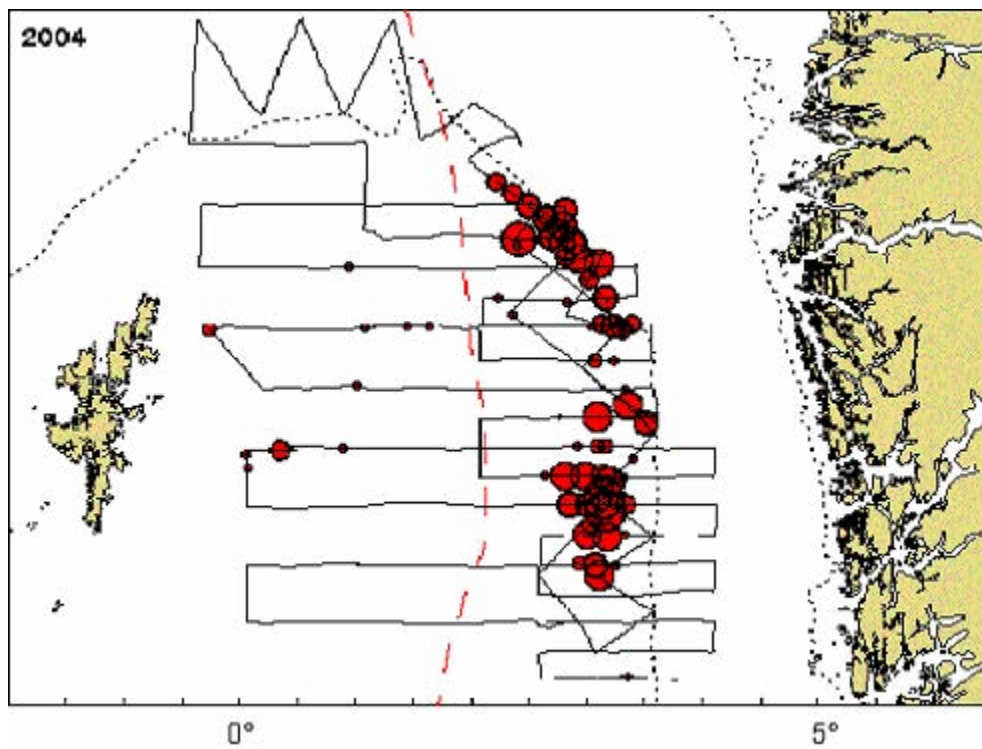
				Distance from coast		
<u>List scientific work by function</u>						
e.g. Magnetometry Gravity Diving Seismics Seabed sampling Bathymetry Trawling Echo sounding Water sampling U/W TV Moored instr. Towed instr.	Water column including sediment sampling of the seabed	Fisheries research within fishing limits	Research concerning the natural resources of the continental shelf or its physical characteristics	Within 4 nmi	Between 4-12 nmi	Between 12 and 200 nmi
Trawling						Yes
Echo sounding					Yes	Yes
Water sampling						Yes
Plankton net						Yes

Beate... E. ...
(On behalf of the Principal Scientist)

 HAVFORSKNINGSINSTITUTTET
INSTITUTE OF MARINE RESEARCH
Rederisksjøen / Research Vessel Division
P.O.Box 1870 Nordnes - N-5817 Bergen - Norway

Dated 23.05.2007

NB. IF ANY DETAILS ARE MATERIALLY CHANGED REGARDING DATES/AREA OF OPERATION AFTER THIS FORM HAS BEEN SUBMITTED, THE COASTAL STATE AUTHORITIES MUST BE NOTIFIED IMMEDIATELY.



Norway will work inside the area delineated by the red lines during the survey 27 September-10 October 2007.