

Not to be cited without prior reference to Marine Scotland, Marine Laboratory, Aberdeen

MRV *Scotia*

Survey 1012S

PROGRAMME

15 August – 3 September 2012

Loading: Aberdeen, 12 August 2012

Half Landing: Greenock, 24 August 2012

Unloading: Aberdeen, 3 September 2012

In setting the survey programme and specific objectives, etc the Scientist-in-Charge needs to be aware of the restrictions on working hours and the need to build in adequate rest days and rest breaks as set out in Marine Scotland's Working Time Policy (Lab Notice 34/03). In addition, the Scientist-in-Charge must formally review the risk assessments for the survey with staff on-board before work is commenced.

In the interest of efficient data management it is now mandatory to return the Survey Report, to I Gibb and the Survey Summary Report (old ROSCOP form) to M Geldart, within four weeks of a survey ending. In the case of the Survey Summary Report a nil return is required, if appropriate

Personnel

No. of Staff	Scientific Crew	First Half	Second Half	Cabin	Survey Participation
1	P Hayes	1	1	SIC	15 Aug 2012 to 3 Sept 2012
2	D Moore	1	1	G	15 Aug 2012 to 3 Sept 2012
3	M Robertson	1	1	F	15 Aug 2012 to 3 Sept 2012
4	J Hunter	1	1	D	15 Aug 2012 to 3 Sept 2012
5	M Rose	1		C	15 Aug 2012 to 24 Aug 2012
6	C Shand	1		H	15 Aug 2012 to 24 Aug 2012
7	P Copland	1		B	15 Aug 2012 to 24 Aug 2012
8	R Duncan	1		A	15 Aug 2012 to 24 Aug 2012
9	G Jones	1		J	15 Aug 2012 to 24 Aug 2012
10	J Heron		1	C	24 Aug 2012 to 3 Sept 2012
11	E Armstrong		1	B	24 Aug 2012 to 3 Sept 2012
12	P Stainer		1	H	24 Aug 2012 to 3 Sept 2012
13	R Watret		1	J	24 Aug 2012 to 3 Sept 2012
*14	D Wake				15 August only (Reson)

* RESON Representative D Wake - 15 August only (1/2 day not overnight)

Estimated Days per Project: 20 days - 20083

Equipment: Day grabs; TV drop frame with lasers and armoured cable; Agassiz trawls; Swathe multibeam echosounder system; RoxAnn system.

Objectives

1. To undertake bathymetric and groundtruthing survey work in connection with potential offshore wet renewable developments located to the southwest of Islay.

Procedure

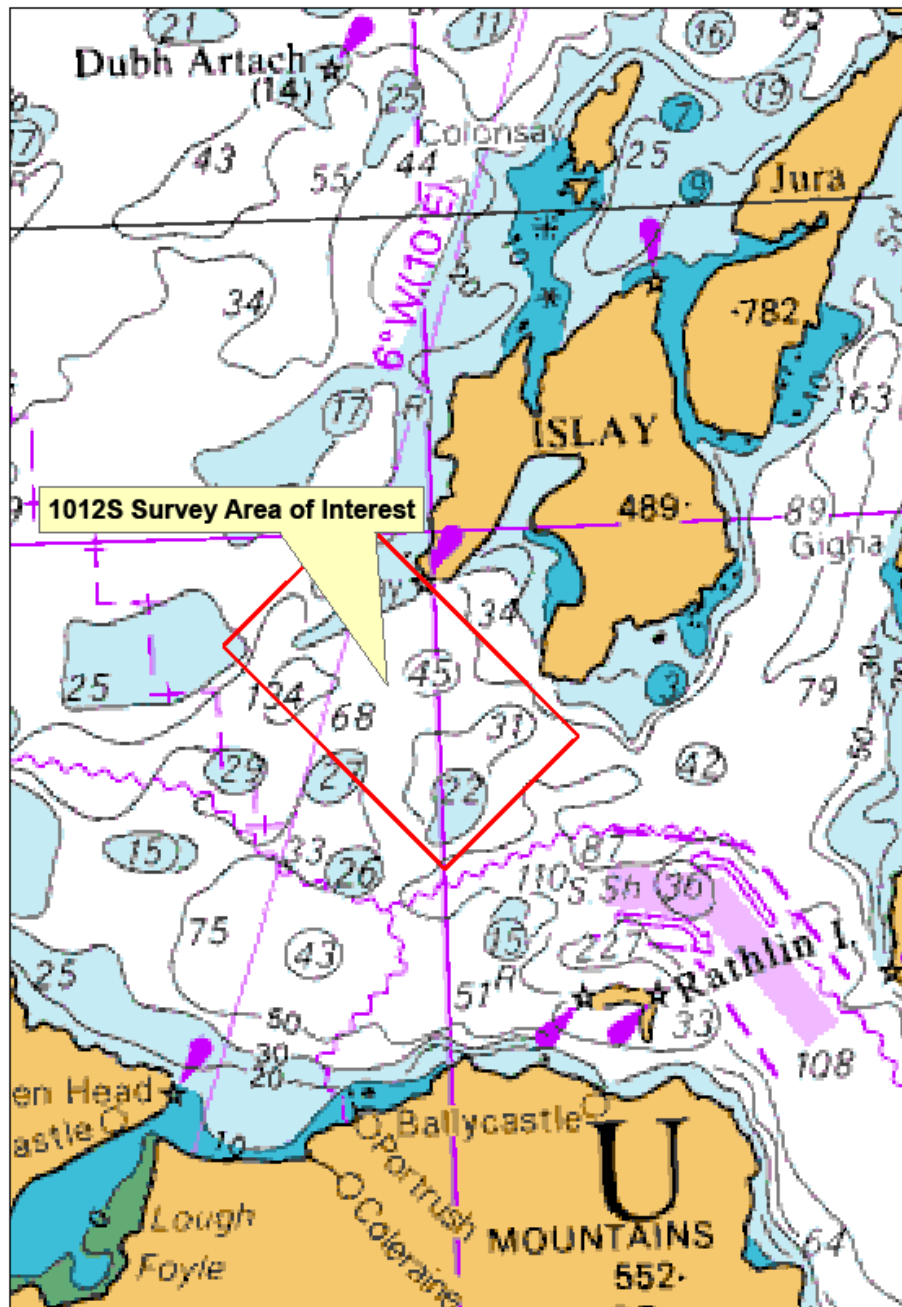
MRV Scotia will depart from Aberdeen Harbour at 09:00 (BST) on 15 August. Before making passage to SW Islay *MRV Scotia* will calibrate the multibeam system off Stonehaven. Once this is completed a small boat transfer will be necessary to return the RESON representative back to harbour. The nature of the work will be heavily dependant on the prevailing weather conditions encountered. The proposed survey work for southwest Islay is very similar to the work undertaken in the Pentland Firth (2009), west of Lewis and Fair Isle (2010) and north coast of Scotland (2011). The bathymetric survey work will involve a series of transects collecting swathe and RoxAnn data, the deployment of the TV drop frame and, where practical, the deployment of a day grab. On arrival at the survey site, two tide gauges will be deployed for the full duration of the survey. Sound velocity profiles will be recorded on a daily basis and deployment of the day grab will be considered after each TV tow.

MRV Scotia will complete a half landing at Greenock on 24 August to exchange scientific staff. On completion of the survey work *Scotia* will return to unload at Aberdeen Harbour on 3 September.

Normal contacts will be maintained with the Laboratory.

Submitted:
P Hayes
30 July 2012

Approved:
I Gibb
02 August 2012



Map showing an overview of the survey area off southwest Islay.