

Not to be cited without prior reference to Marine Scotland, Marine Laboratory, Aberdeen

MRV Scotia

Survey 1013S

PROGRAMME

23 August – 06 September 2013

Ports

Loading: Aberdeen, 21 August, 2013

Unloading: Aberdeen, 06 September, 2013

In setting the cruise programme and specific objectives, etc the Scientist-in-Charge needs to be aware of the restrictions on working hours and the need to build in adequate rest days and rest breaks as set out in Marine Scotland's Working Time Policy (Lab Notice 34/03). In addition, the Scientist-in-Charge must formally review the risk assessments for the cruise with staff on-board before work is commenced.

In the interest of efficient data management it is now mandatory to return the Cruise Report, to I Gibb and the Cruise Summary Report (old ROSCOP form) to M Geldart, within four weeks of a cruise ending. In the case of the Cruise Summary Report a nil return is required, if appropriate.

Personnel

M Robertson (SIC)
C. Hall
N. Collie
P Copland
JNCC
JNCC
JNCC
JNCC
Contractor (to be confirmed)

Estimated days by project: 15 days – SP02Q0 (20113)

Gear

TV Drop frame and VMUX controller, 1020m netsonde cable, Reson 7125 swath system, Edgetech sidescan sonar, mini-Hamon grab, Day grab, Rock dredge, ancillary equipment for benthic sample processing.

Objectives

The main areas of interest on Pobie Bank are presented in Figure 1. Pobie Bank Reef is located in the North Sea, approximately 20km east of Unst, Fetlar and Whalsey in Shetland and is separated from Shetland by the Unst Basin. The proposed SAC is approximately 70km long

(crest running NNE to SSW) and up to 21km wide. The depth within the proposed SAC ranges from 70m to over 100m; the average seabed depth within the site boundary is approximately 90m. Positions for all sampling will be provided later.

Procedure

General

Loading of all sampling gear will take place on 21 August. Scotia will then sail on the morning of 23 August and make passage to a position in the Southern Trench where, once safety drills have been completed, testing and trial deployments of all acoustic and camera gear will be carried out. On completion of this task, Scotia will sail for the areas of interest in the vicinity of Pobie Bank. A daily operational sampling plan will be agreed between the SIC, the Captain and the JNCC Team Leader. On 26 August, Scotia will depart from the survey area and sail for Unst to pick up Neil Collie from Baltasound. The time of departure from the work site and time of collection of Mr Collie from Unst will be decided on the day in liaison with the captain. Scotia will then return to Pobie Bank Reef and continue with the survey. The vessel will depart the survey grounds at a suitable time for unloading in Aberdeen, am on 6 September.

Normal contacts will be maintained with the Laboratory.

Submitted:
M R Robertson
8 August 2013

Approved:
I Gibb
8 August 2013

Offshore Special Area of Conservation Site Map: Pobie Bank Reef

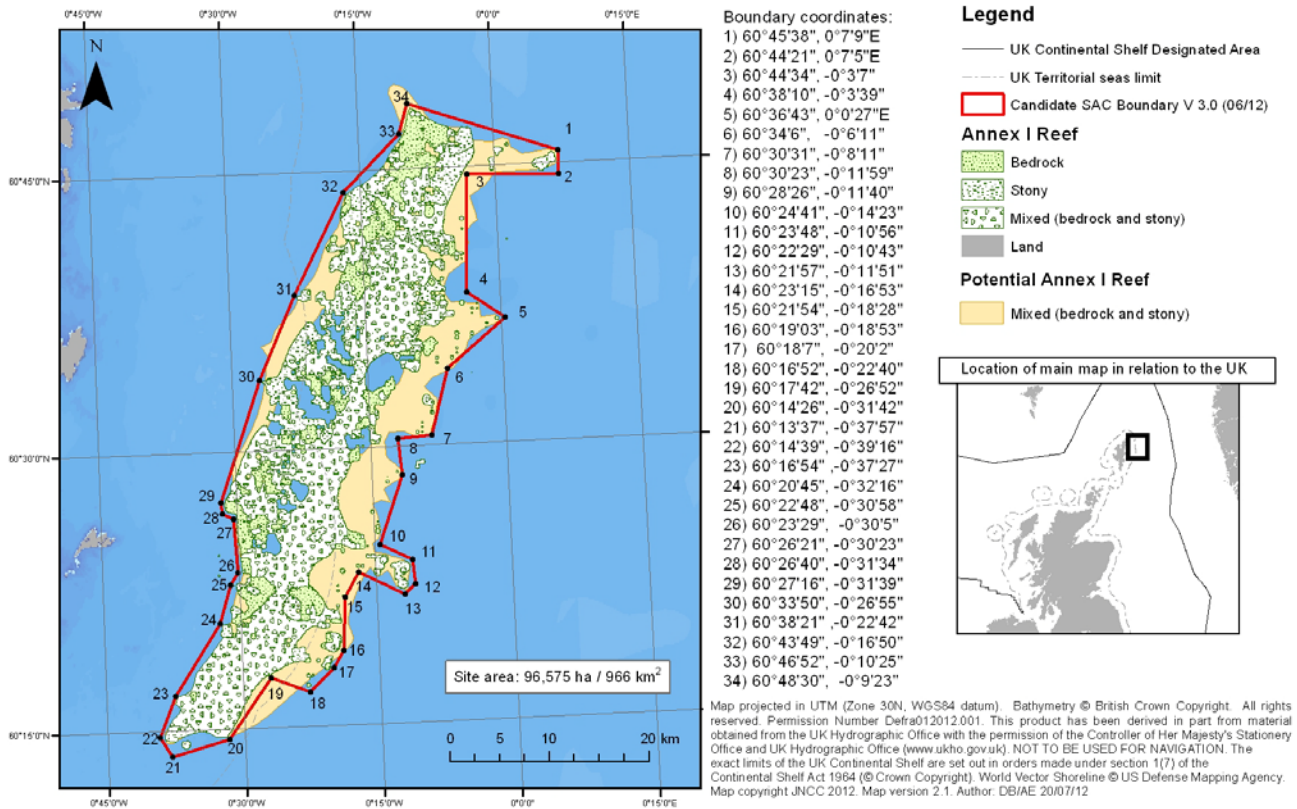


Figure 1: Pobie Bank SAC priority area for survey 1013S