

Not to be cited without prior reference to Marine Scotland, Marine Laboratory, Aberdeen

MFV *Genesis BF505*

Survey 1219H

PROGRAMME

28 April – 07 May 2019

Ports

Loading: Scrabster (TBC), 28 April 2019

Unloading: Scrabster (TBC), 7 May 2019

In setting the survey programme and specific objectives, etc the Scientist-in-Charge needs to be aware of the restrictions on working hours and the need to build in adequate rest days and rest breaks as set out in Marine Scotland's Working Time Policy (Lab Notice 34/03).

In addition, the Scientist-in-Charge must formally review the risk assessments for the survey with staff on-board before work is commenced.

In the interest of efficient data management it is now mandatory to return the Survey Report to Iain Gibb and the Survey Summary Report (old ROSCOP form) to Matt Geldart, within four weeks of a survey ending. In the case of the Survey Summary Report a nil return is required, if appropriate.

Estimated Days Per Project: 10 days, RV1909 (20534)

Fishing Gear: Anglerfish Trawl BT 195

Objectives

1. To undertake a nationally co-ordinated demersal trawling survey of Anglerfish (*Lophius piscatorius* and *Lophius budegassa*) at Rockall, ICES area IVb.
2. To record and map distributions of Megrin (*Lepidorhombus wiffiagonis*), Four-Spot Megrin (*Lepidorhombus boscii*) Cod (*Gadus morhua*), Blue Skate (*Dipturus batis*) and Flapper Skate (*Dipturus intermedius*).
3. To collect biological data on Anglerfish species, Cod, Megrin, Four-Spot Megrin, Blue Skate and Flapper Skate.

Procedures

This trawl survey follows a set of protocols drawn up by an industry science survey planning group made up of Marine Scotland scientists and fishing representatives. These protocols share much in common with the sampling regimes described in Marine Scotland standing instructions for demersal trawl surveys.

The survey track and sampling locations will be delivered to the skipper prior to departure.

Trawling

One haul of 60 minutes duration will be made at each sampling station; trawling operations will occur in waters up to a maximum of 1000 m. Daily starting times will be 06:00 hours and

all trawling should be complete by approximately 23:30 hours each night. The Scanmar system will be used to monitor wing spread, door spread and distance covered during each haul. A bottom contact sensor will be mounted on the footrope.

Catches will be worked up according to the protocols for Marine Scotland Anglerfish surveys which are similar in principle to Marine Scotland standing instructions.

Post Survey

All scientific staff will be unloaded on 7 May 2019, equipment will be retained onboard for the following 1119H West Coast charter.

Normal contacts will be maintained with the Laboratory.

Submitted:
R Gillespie-Mules
18 April 2019

Approved:
I Gibb
18 April 2019

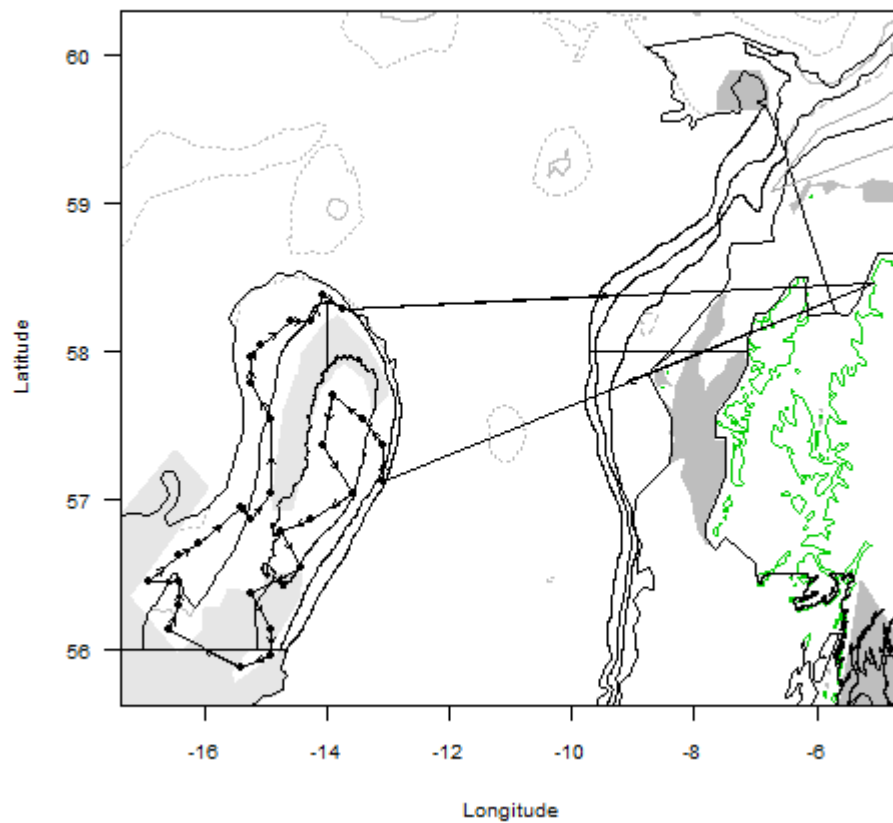


Figure 1: Map showing approximate survey track and trawl positions for 1219H.