

Not to be cited without prior reference to Marine Scotland, Marine Laboratory, Aberdeen

## **MRV Scotia**

Survey 1617S

### **PROGRAMME**

13 November - 3 December 2017

Loading: Aberdeen 9 November 2017

Departure: Aberdeen 13 November 2017

Half Landing: Greenock or Belfast 23 November 2017 (Provisional)

Unloading: Aberdeen 3 December 2017

In setting the survey programme and specific objectives, etc. the Scientist-in-Charge needs to be aware of the restrictions on working hours and the need to build in adequate rest days and rest breaks as set out in Marine Scotland's Working Time Policy (Lab Notice 34/03). In addition, the Scientist-in-Charge must formally review the risk assessments for the survey with staff on-board before work is commenced. In the interest of efficient data management it is now mandatory to return the Survey Report, to I Gibb and the Survey Summary Report (old ROSCOP form) to M Geldart, within four weeks of a Survey ending. In the case of the Survey Summary Report a nil return is required, if appropriate.

### **Personnel**

R J Kynoch	SIC
M Kinghorn	
R G-Mules	
N Ensor	
K Summerbell	
M Gault	(Part 1)
K Boyle	(Part 1)
J Mills	(Part 2)
D Copland	(Part 2)

**Estimated days by project:** 21 days – RV1714 (20443)

### **Fishing Gear**

GOV Trawl (BT137) and ground gear D (hoppers).

### **Objectives**

1. To participate in the ICES co-ordinated western division demersal trawling survey.
2. To obtain temperature and salinity data profiles at each trawling position.
3. To collect additional biological data in connection with the EU data collection framework (DCF)

## **Procedures**

All fishing gear and scientific equipment will be loaded aboard during the landing day of 1517S. *Scotia* will sail on 13 November and (after all safety drills and shakedown trawl shoot) commence fishing operations the following morning on the stations to the west of the Orkneys. Weather conditions at the time will determine the exact start area. Survey schedule and operations will be decided by SIC after daily consultation with Fishing Master and Captain. A half landing will be made around 23 or 24 November into Greenock or possibly Belfast to exchange staff, but the date and port are to be confirmed once the vessel has commenced the survey. The survey will finish in Aberdeen on 3 December with all staff and equipment/fishing gear returning to the Marine Laboratory.

## **Trawling**

This is a random-stratified survey design with trawl stations being distributed within twelve predefined strata covering the sampling area. One trawl haul of thirty minutes duration will be made within a radius of five nautical miles of each core positions shown on the attached chart. If trawling is not possible at the core location then the nearest appropriate secondary/alternative station will be used. Final trawl locations will be decided after SIC consultations with Fishing Master. For each haul, the Scanmar monitoring system and NOAA bottom contact sensor will be used to observe and record the performance and geometry of the trawl and trawl doors.

## **Fish Sampling**

All fish will be treated according to current standard research vessel procedures and additional biological data will be collected as determined by EU data regulation 1639/2001 and 1581/2004.

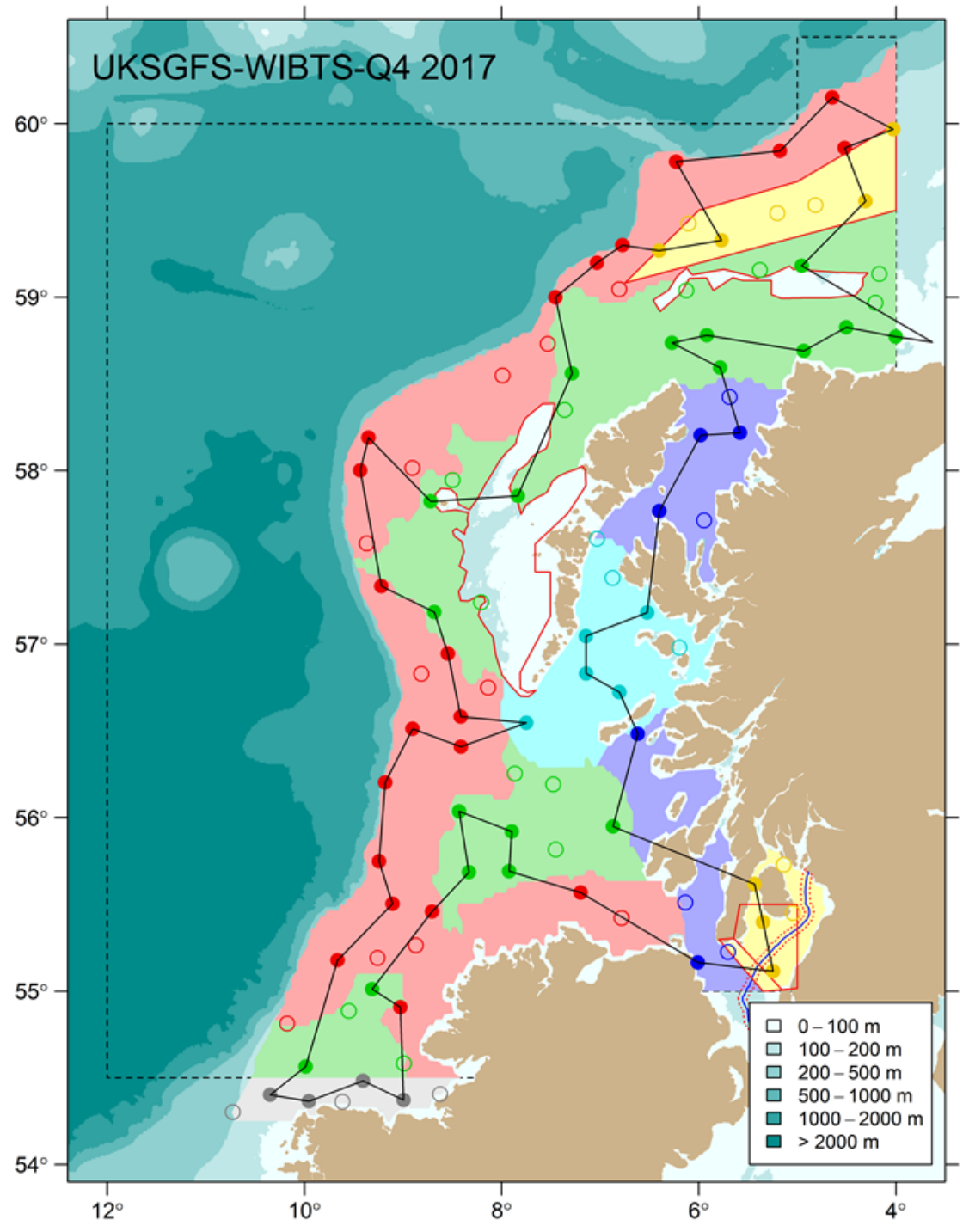
## **Hydrography Sampling**

CTD casts will be taken at each trawl station. Please note the thermosalinograph will not be run during this survey.

Normal contacts will be maintained with MSS.

Submitted:  
R J Kynoch  
6 October 2017

Approved:  
I Gibb  
09 October 2017



1617S Trawl positions for each core station (solid circle) and alternative/additional positions (empty circles) will be added as time allows.