

Not to be cited without prior reference to Marine Scotland, Marine Laboratory, Aberdeen

MRV *Alba na Mara*

Survey 1719A

PROGRAMME

04 - 18 October 2019

Ports

Loading: 30 September 2019, Troon

Unloading: 18 October 2019, Troon

In setting the survey programme and specific objectives, etc the Scientist-in-Charge needs to be aware of the restrictions on working hours and the need to build in adequate rest days and rest breaks as set out in Marine Scotland's Working Time Policy (Lab Notice 34/03). In addition, the Scientist-in-Charge must formally review the risk assessments for the survey with staff on-board before work is commenced.

In the interest of efficient data management it is now mandatory to return the survey report, to I Gibb and the survey Summary Report (old ROSCOP form) to M Geldart, within four weeks of a survey ending. In the case of the survey Summary Report a nil return is required, if appropriate.

Fishing Gear: Scallop dredges

Project: 15 days, SU02NS

Objectives

1. To carry out a dredge survey of king scallops in the Clyde.
2. To age, measure and assess shell damage for all king scallops caught.
3. To collect information on by-catch of other commercial fish and shellfish species.
4. To identify and quantify all starfish species in all dredge tows.
5. To collect data on king scallop ring measurements.
6. To collect king scallop meat weight and biological data.
7. To record and retain marine litter obtained during the dredging process.
8. To collect frozen whole scallops for heavy metal testing as part of the OSPAR assessment of hazardous substances in the marine environment.
9. To collect tissue samples for possible genetic testing.
10. To carry out camera trials if conditions and time allow.

Procedure

The survey will depart from Troon on 4 October with the aim of conducting a dredge survey of king scallops in the Clyde region. This is a preliminary survey to collect catch rate data in an area that has not been recently surveyed for king scallops. The survey will also collect biological information on this species. An industry representative will be invited on board to view the ship and fishing gear before the survey commences.

Once vessel drills have been undertaken, the vessel will steam to the first station, the order of which will be which will be decided by the SIC in consultation with the skipper. Scallop dredge hauls will be conducted at stations shown in Figure 1. These positions have been agreed in collaboration with fisherman, industry representatives and external stakeholders.

Hauls will be of 30 minutes duration. From each haul all king scallops will be measured to the

half centimeter below and aged. In addition, numbers and size distribution of commercial fish and shellfish species will be recorded along with scallop shell damage and starfish numbers and species. A sub sample of king scallops will be selected for ring measurements to enable growth studies. A separate sub sample will be dissected to collect biological data which will include examination of the gonad to try and ascertain spawning period. Scallops (10 individuals per station) will also be collected from selected sites and frozen for heavy metal analysis back at the laboratory. Any litter collected in the dredges will be recorded as set out in the standard operating procedure and placed in bags to be disposed of on return to port. Camera trials will be carried out if conditions and time allow – with the aim to collect footage of the fishing gear while in operation.

If time allows; additional stations may be added out with the Clyde. Areas of particular focus would be to the south of Islay and the area to the east side of the North Channel.

The survey will end on 18 October 2019 and the vessel will be berthed in Troon where all equipment and staff will then return to the laboratory.

Normal contacts will be maintained with the laboratory.

Submitted:
J. Turriff
26 September 2019

Approved:
I. Gibb
27 September 2019

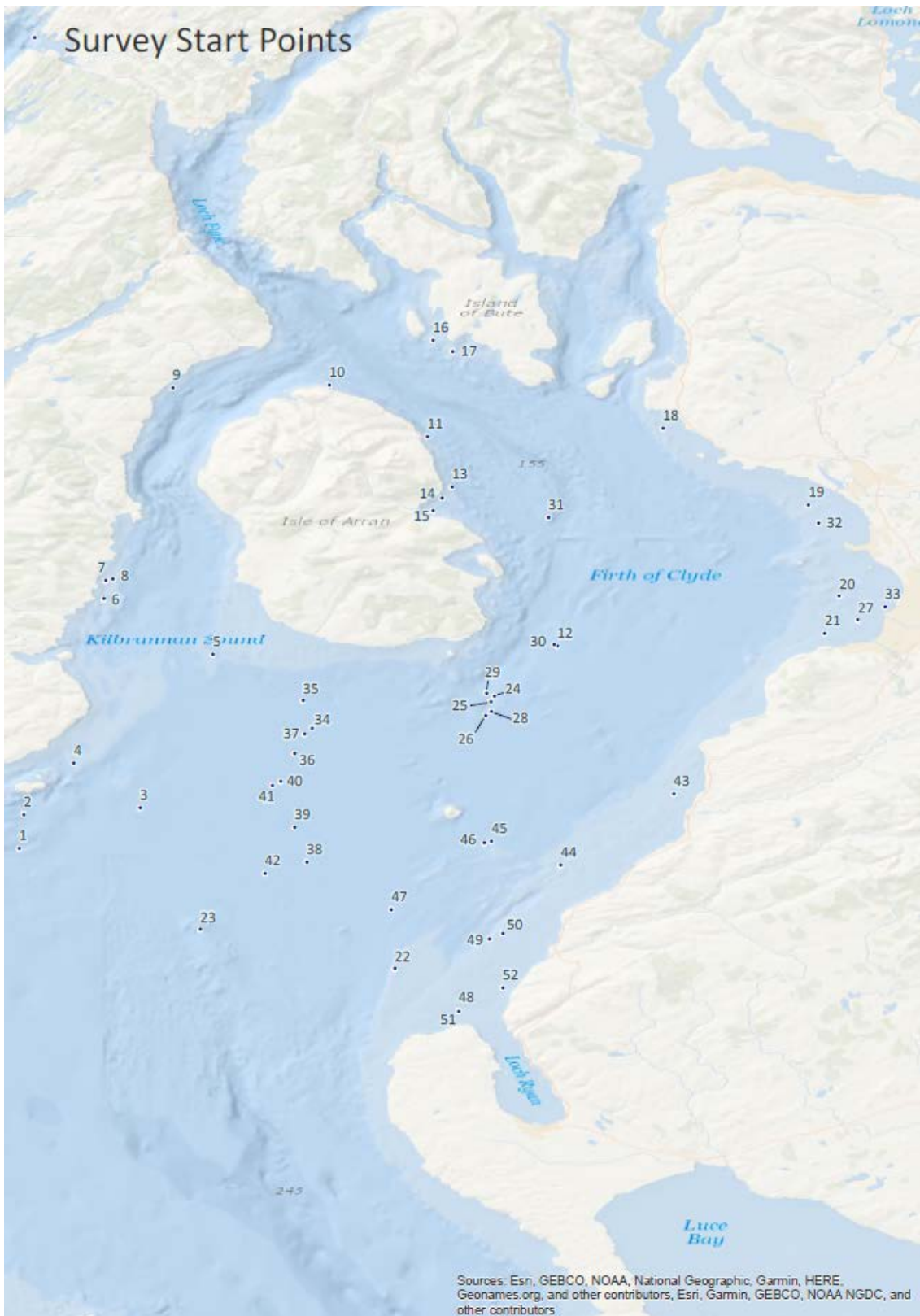


Figure 1: Station positions for scallop survey 1719A.

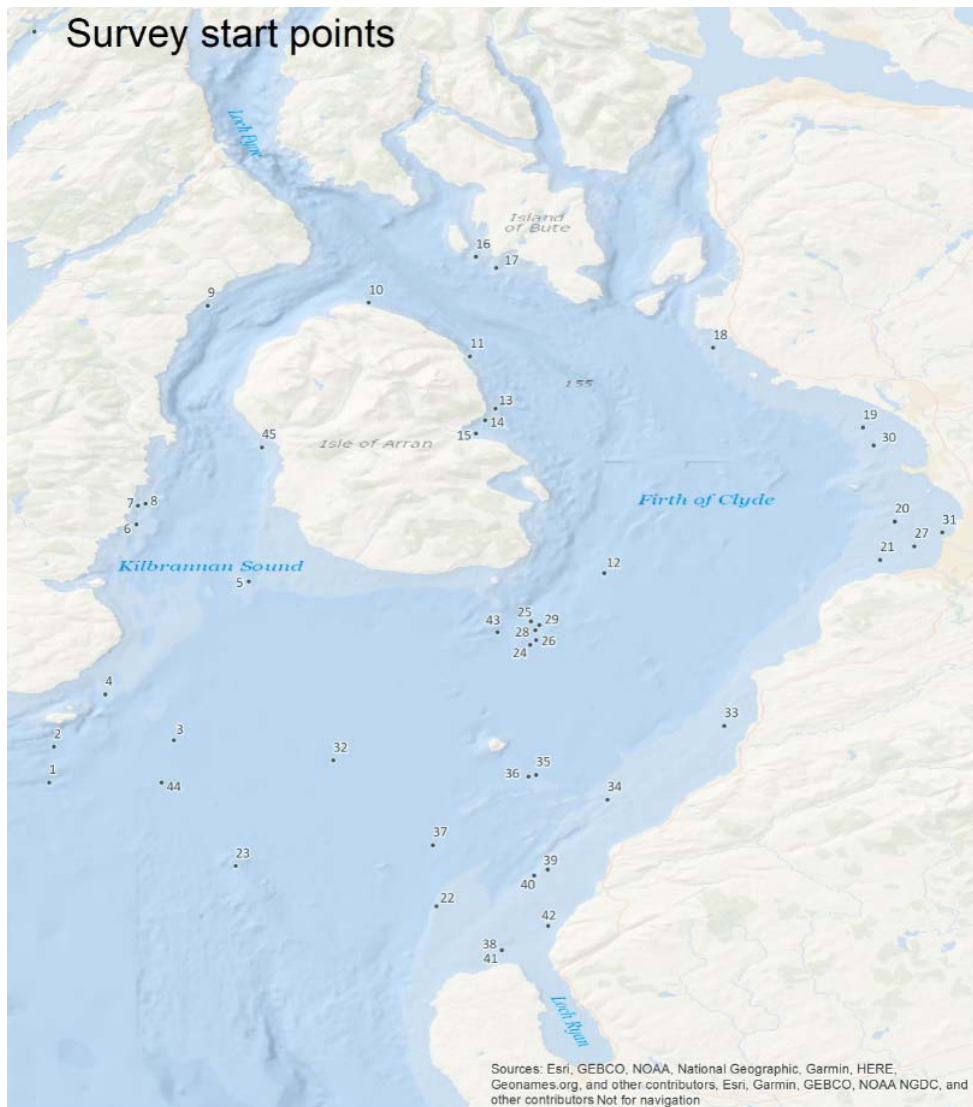
Not to be cited without prior reference to Marine Scotland, Marine Laboratory, Aberdeen

MRV Alba na Mara

Survey 1719A

PROGRAMME AMENDMENT

Please see below the revised start locations for sampling during survey 1719A.



I. Gibb
03/10/2019