

Not to be cited without prior reference to Marine Scotland Science, Aberdeen

MRV *Alba na Mara*

Survey 1722A

PROGRAMME

1-15 November 2022

Ports

Loading: 28 October 2022, Troon

Unloading: 15 November 2022, Fraserburgh

In setting the survey programme and specific objectives, etc the Scientist-in-Charge needs to be aware of the restrictions on working hours and the need to build in adequate rest days and rest breaks as set out in Marine Scotland's Working Time Policy (Lab Notice 34/03). In addition, the Scientist-in-Charge must formally review the risk assessments for the survey with staff on-board before work is commenced.

In the interest of efficient data management it is now mandatory to return the survey report, to I Gibb and the survey Summary Report (old ROSCOP form) to M Geldart, within four weeks of a survey ending. In the case of the survey Summary Report a nil return is required, if appropriate.

Fishing Gear: Scallop dredges

Project: 15 days, SCALOP

Objectives

1. To carry out a dredge survey of king scallops in the Clyde.
2. To age, measure and assess shell damage for all king scallops caught.
3. To collect information on by-catch of other commercial fish and shellfish species.
4. To identify and quantify all starfish species in all dredge tows.
5. To collect data on king scallop ring measurements.
6. To collect king scallop meat weight and biological data.
7. To record and retain marine litter obtained during the dredging process.
8. To collect frozen whole scallops for heavy metal testing as part of the OSPAR assessment of hazardous substances in the marine environment.
9. To collect tissue samples for genetic testing.
10. To collect scallop shells to form part of a reference set for Scotland

Procedure

The survey will depart from Troon on 1 November with the aim of conducting a dredge survey of king scallops in the Clyde region. A preliminary survey to collect King scallop catch rate data in this area was carried out in 2019. A further survey was partially carried out in 2021 but was limited due to Covid-19 regulations. A total of 47 stations have been selected (from the original 2019 survey) to repeat this year (Figure 1). The survey will also collect biological information on this species.

Vessel drills will be conducted as required and the vessel will head to the first station. Scallop dredge hauls will be conducted at stations shown in Figure 1. These positions have been agreed in collaboration with fisherman, industry representatives and external stakeholders.

The order by which the tows will be undertaken will be weather dependant and agreed in conjunction with the vessel master.

Hauls will be of 30 minutes duration and towed at a speed of ~2.5 knots. From each haul all of the scallops will be measured to the half centimetre below and aged. In addition, numbers and size distribution of commercial fish and shellfish species will be recorded along with scallop shell damage and starfish numbers and species. Scallops (ten individuals per station) will also be collected from selected sites and frozen for heavy metal analysis back at the laboratory.

Any litter collected in the dredges will be recorded as set out in the SOP and placed in bags to be disposed of on return to port.

The survey will end in Fraserburgh on 15th of November.

Normal contacts will be maintained with the laboratory.

Submitted:
J Turriff
10 October 2022

Approved:
I Gibb
20 October 2022

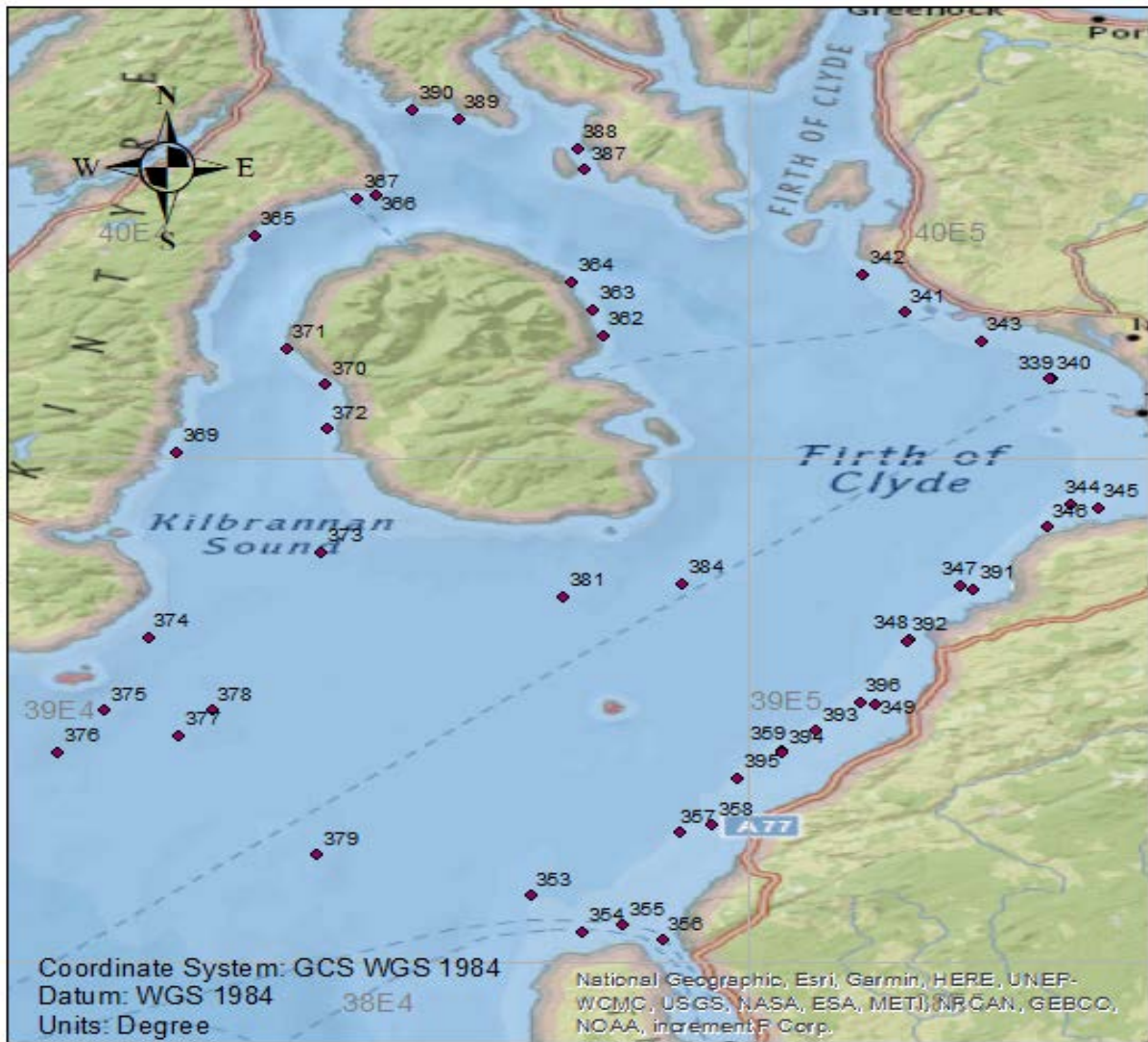


Figure 1: Clyde stations.