

**CENTRE FOR ENVIRONMENT, FISHERIES AND AQUACULTURE SCIENCE
LOWESTOFT LABORATORY, SUFFOLK, NR33 0HT**

2014 RESEARCH VESSEL PROGRAMME

PROGRAMME: C END 01-2014

STAFF:

Part 1 (03/01/14-10/01/14):

Staff to join vessel at Lowestoft Quay no later than 17:00 on 03/01/14.

Inductions: 18:00 on 03/01/14.

Toolbox Talk: 19:00 on 03/01/14

Part 2 (10/01/14-18/01/14)

NB Marc Whybrow and Trisha Breen will be 'land-based' points of contact for coordinating travel arrangements for survey staff meeting the ship for Part 3.

Part 3 (19/01/14-27/01/14)

DURATION:

3rd January 2014 (Lowestoft)-28th January 2014 (Lowestoft)

LOCATION: Southern North Sea, English Channel, SW Approaches

AIMS:

Evidence gathering in support of proposals for designation and management of recommended Marine Conservation Zones (rMCZs). Proposed survey areas:

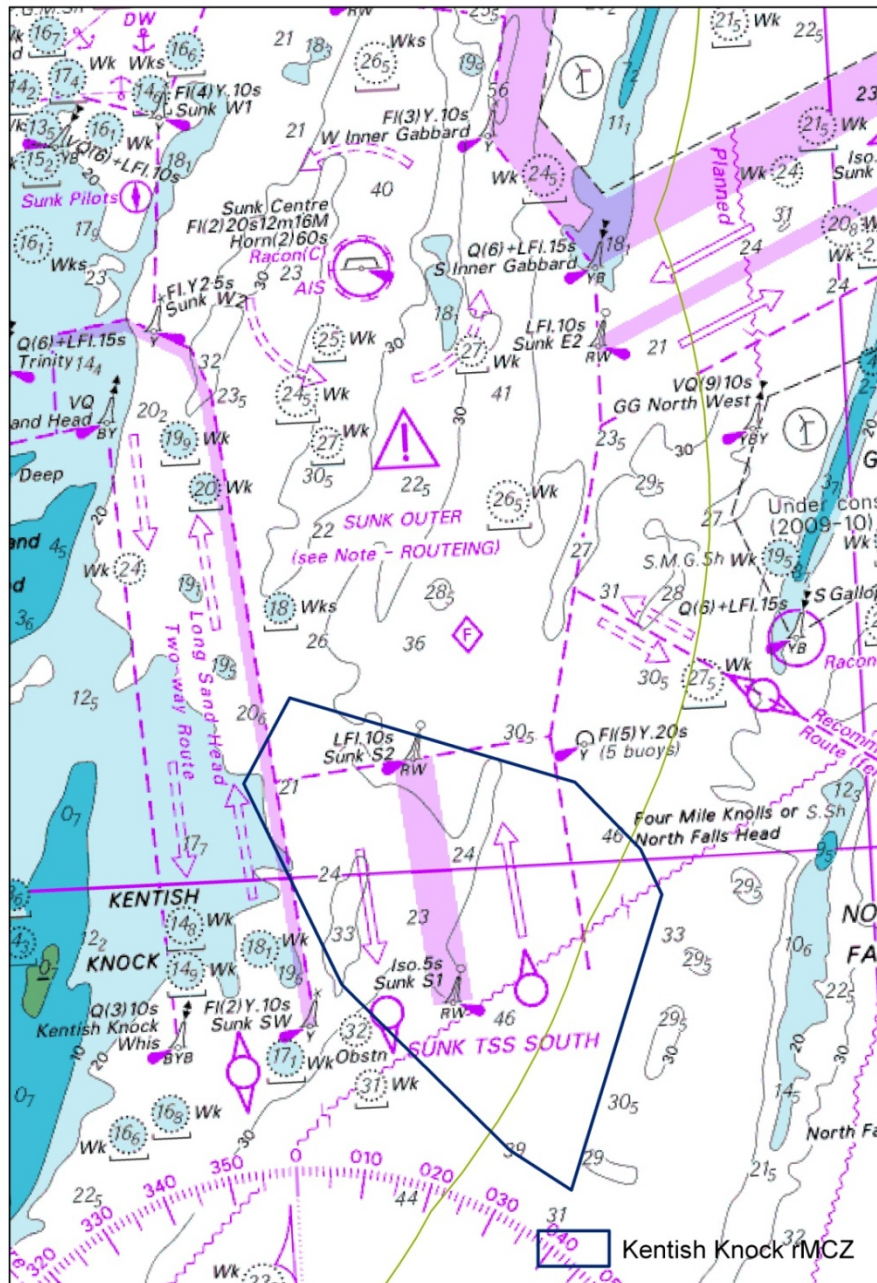
- **Kentish Knock East rMCZ (Priority 1)**
- **Inner Bank rMCZ (Priority 1)**
- **Skerries and Surrounds MCZ (Priority 1)**
- **Goodwin Sands rMCZ (Contingency)**
- **South of Portland rMCZ (Contingency)**

PLAN:

Depart Lowestoft: 3rd January 2014, 22:45

Transit to MBES calibration site on route to first survey area at Kentish Knock East (MBES calibration site TBC). Following MB Calibration transit on to Kentish Knock East rMCZ.

Kentish Knock East rMCZ (Priority 1)



Acoustic Survey

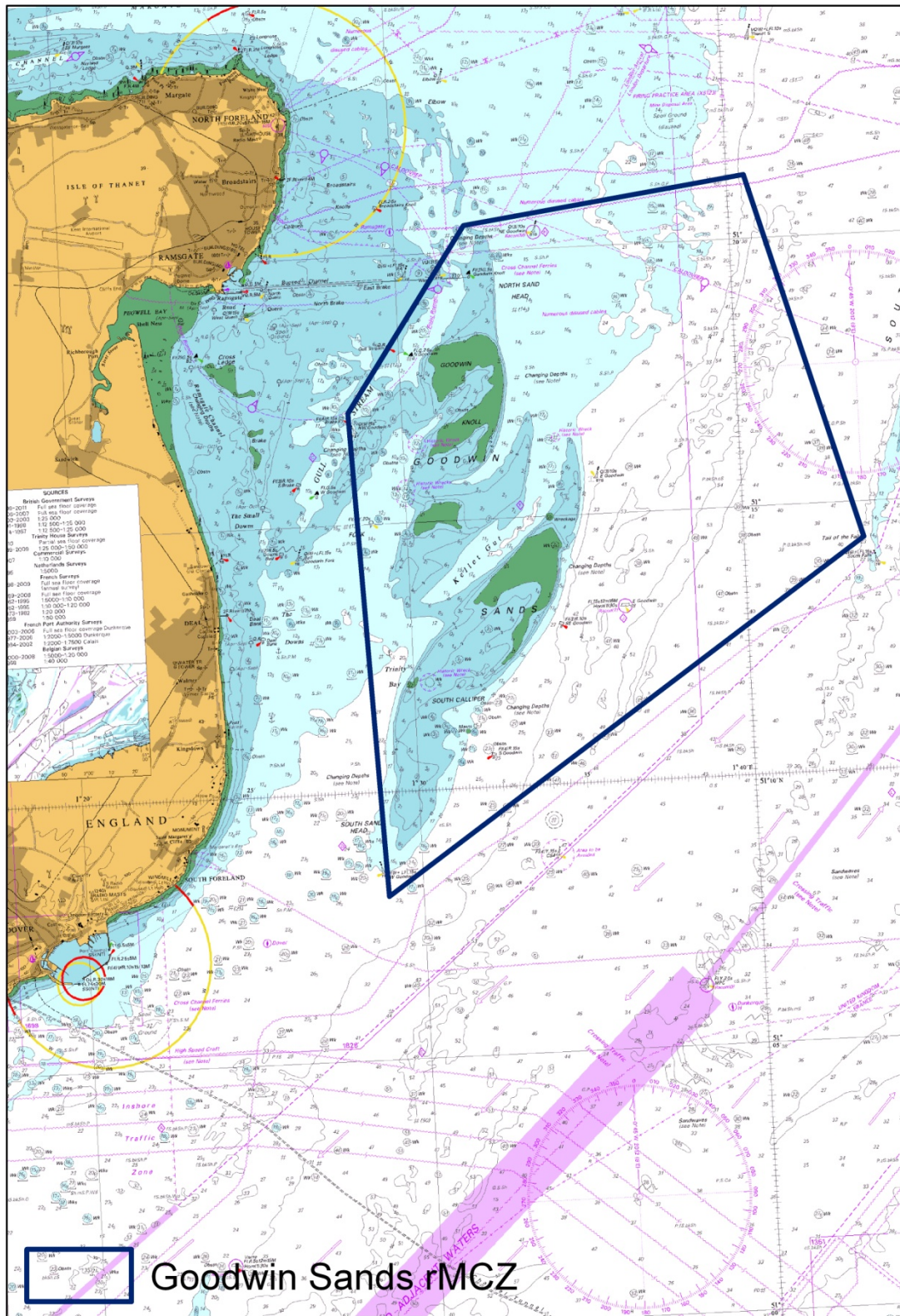
Full MBES coverage across entire site.

Groundtruthing survey

Underwater video and stills camera system (drop down) deployment and Hamon grab sampling for sediments at approximately 60-80 stations positioned adaptively following acquisition of MBES data.

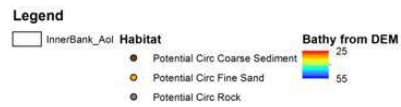
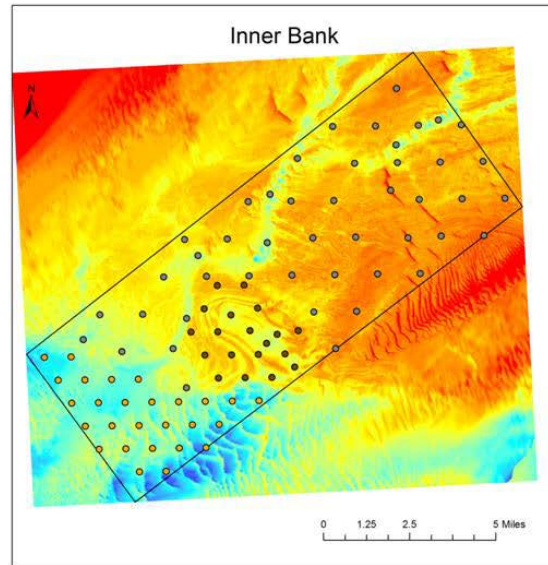
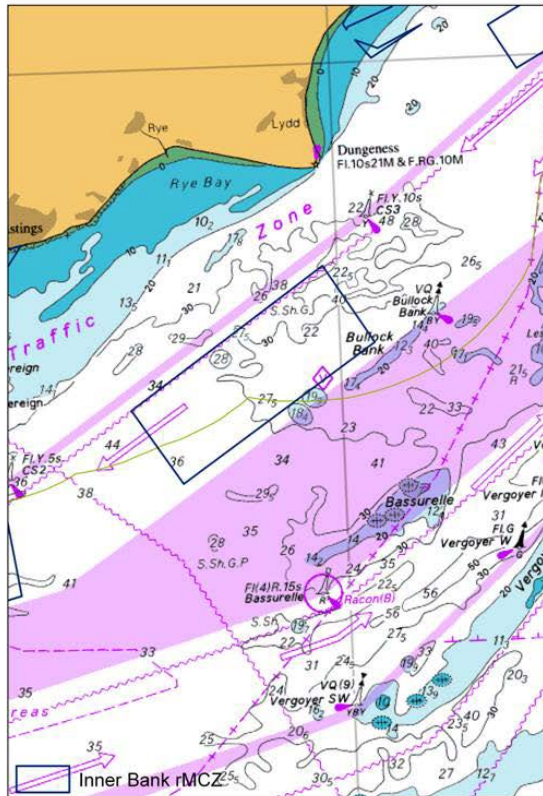
Goodwin Sands rMCZ (Priority 1)

Subset of groundtruth sampling stations (video and grabs) across offshore area of site accessible to Endeavour.



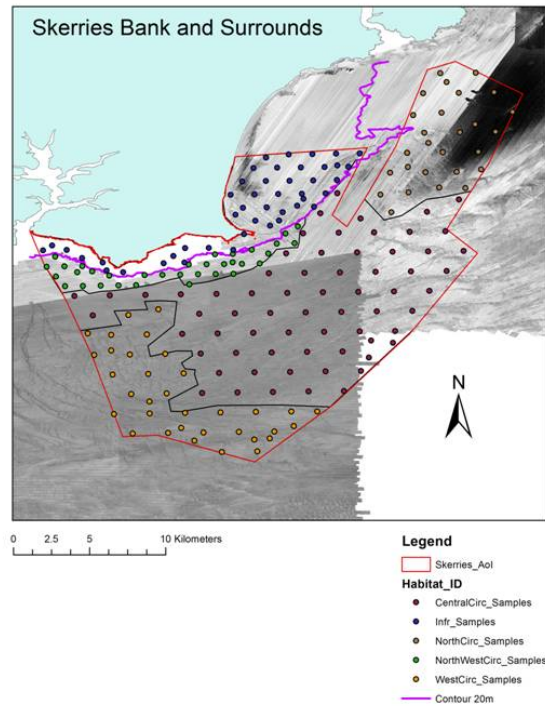
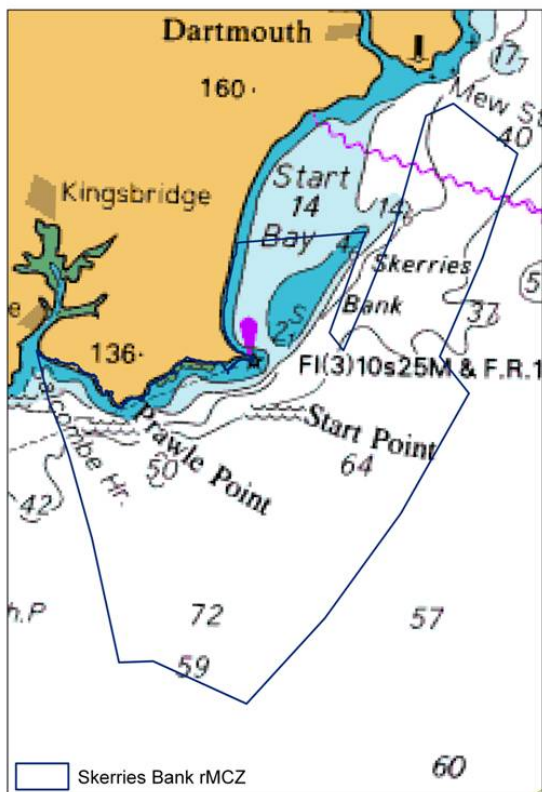
Inner Bank rMCZ (Priority 1)

Groundtruthing survey only (drop down video and stills camera system and Hamon grab sampling) across a pre-planned survey grid.



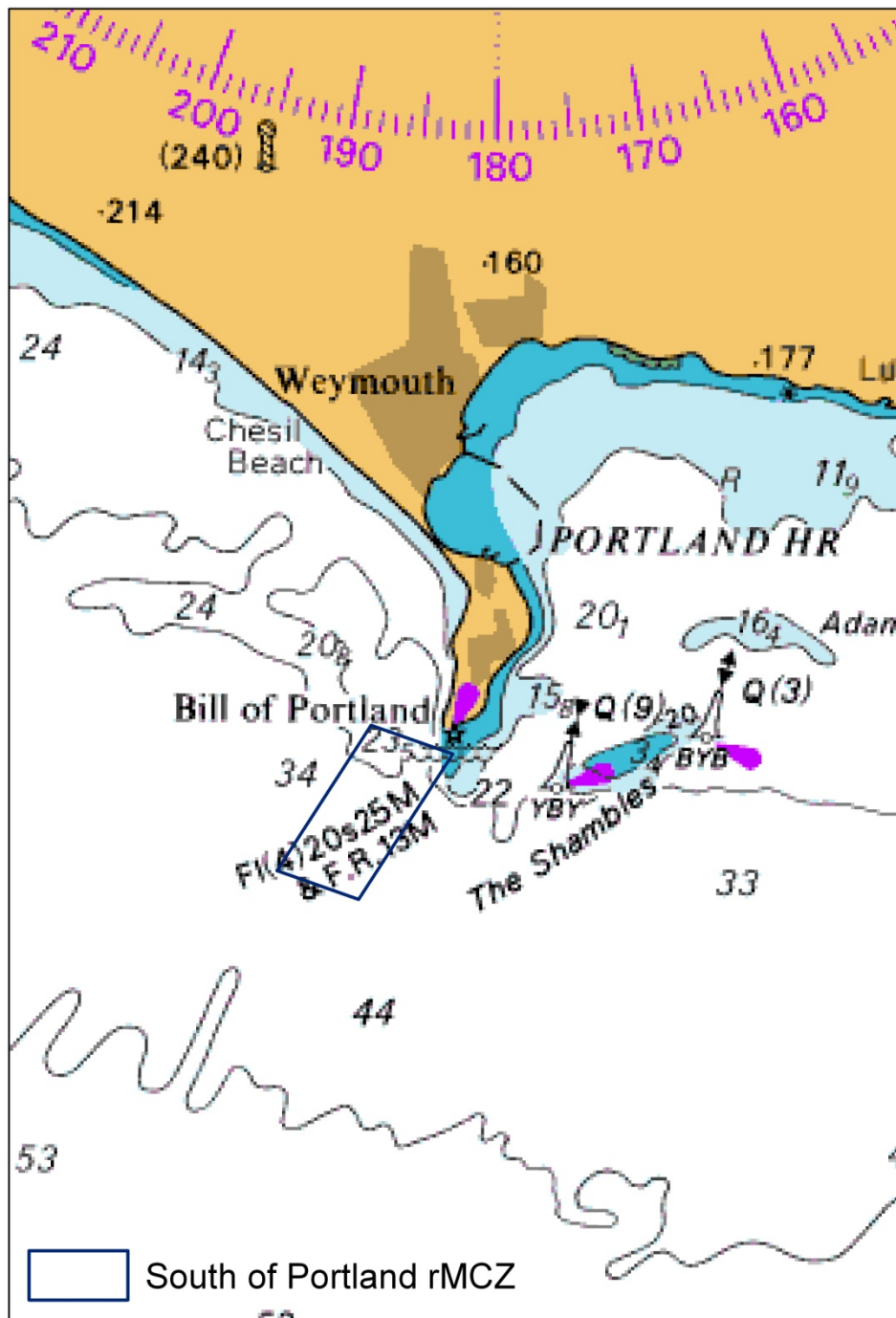
Skerries bank and Surrounds MCZ (Priority 1)

Groundtruthing survey only (drop down video and stills camera system and Hamon grab sampling) across the offshore region of a pre-planned survey grid.



South of Portland rMCZ (Contingency)

Groundtruthing survey only (drop down video and stills camera system and Hamon grab sampling) across the offshore region of a pre-planned survey grid.



Sue Ware/Alex Callaway
Scientist In Charge
12/12/13

DISTRIBUTION:
Alison Challis
Nigel Lyman
P&O