

Figure 1 proposed cruise track

AIMS:

1. To acquire 100% coverage of designated areas of the Prawle Point to Plymouth Sound SAC with Multibeam swath bathymetry in partnership with NE.
2. Acoustic and underwater camera survey at Haig Fras SAC in partnership with JNCC.

Cruise Plan

Part A 06/01/11 – 13/01/11

After departing Portland (23/03/11) Cefas Endeavour will transit to the Prawle Point to Plymouth Sound SAC and continue a multibeam swath bathymetry survey for 3 days (**Aim 1**) and, if time allows, 1 or 2 drop camera tows. There will then be a change of scientists in Plymouth (or any other suitable location dependant on weather) on the 26-27/03/11.

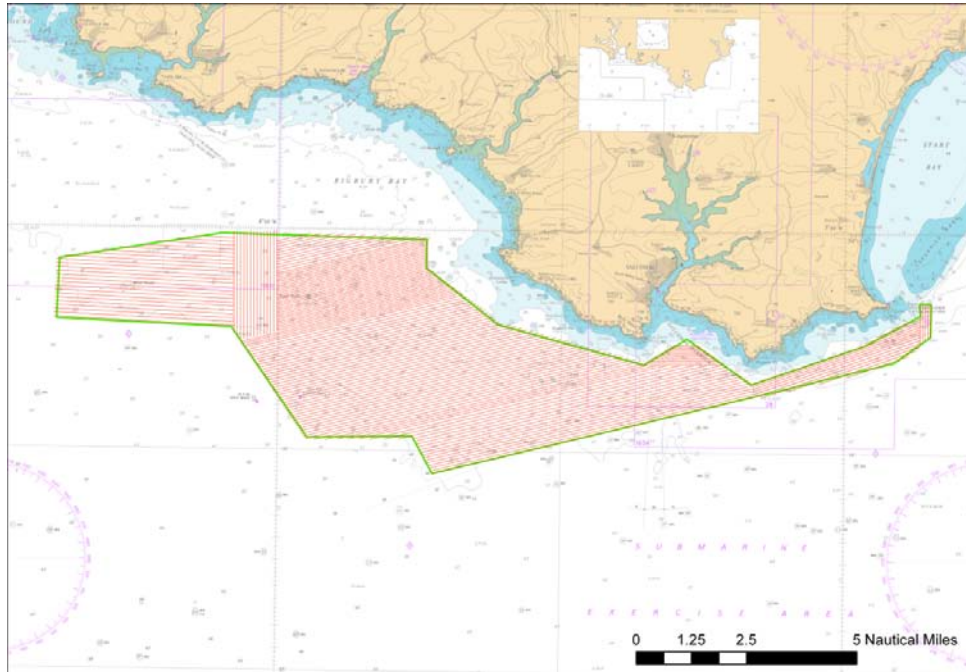


Figure 2 Planned MB survey

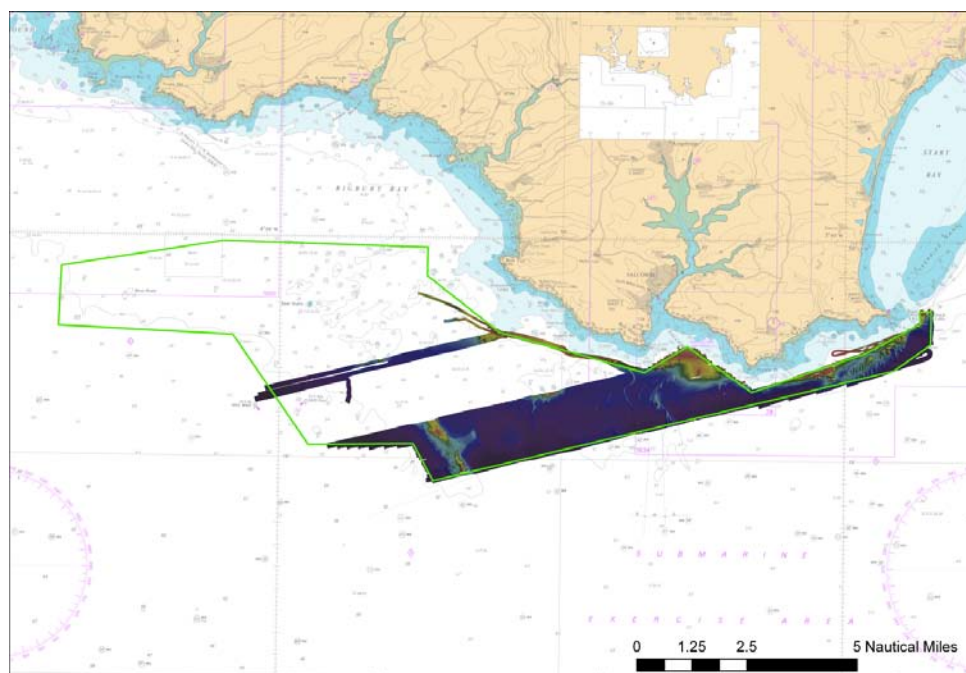


Figure 3 Completed proportion of planned MB survey (Aim1)

Part B 26-27/03/11 – 05/04/11

The Cefas Endeavour will then proceed to the Haig Fras SAC (Approx 140nm) and continue an acoustic and underwater video survey (**Aim 2**). On completion of this work the Cefas Endeavour will transit back to Lowestoft arriving no later than the morning of the 05/04/11.

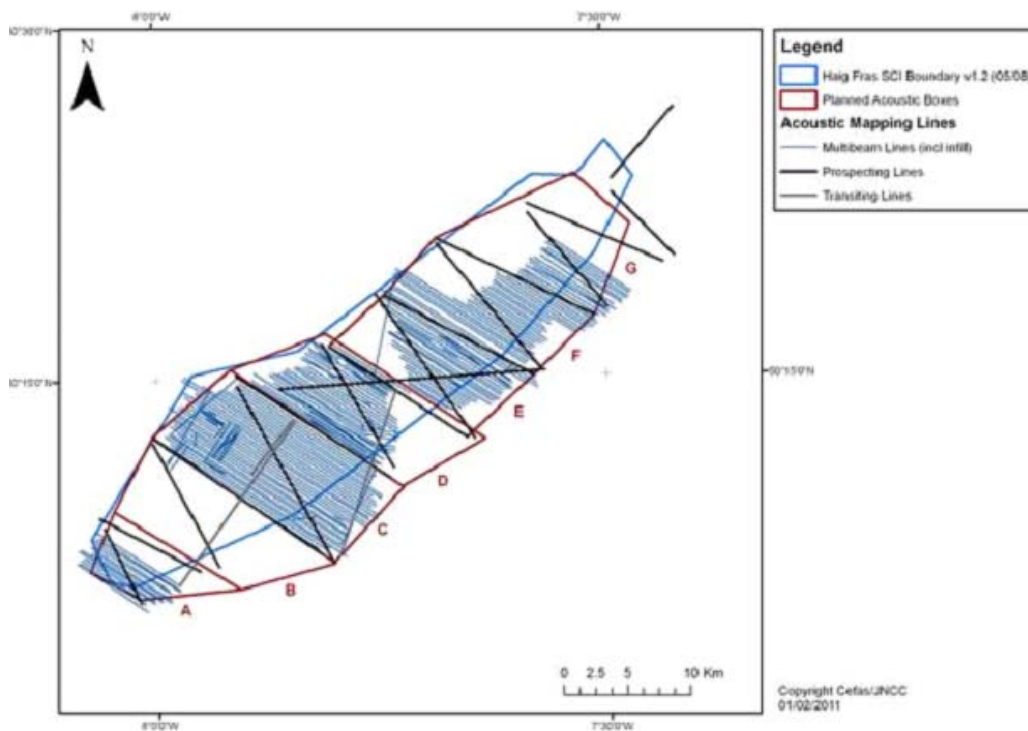
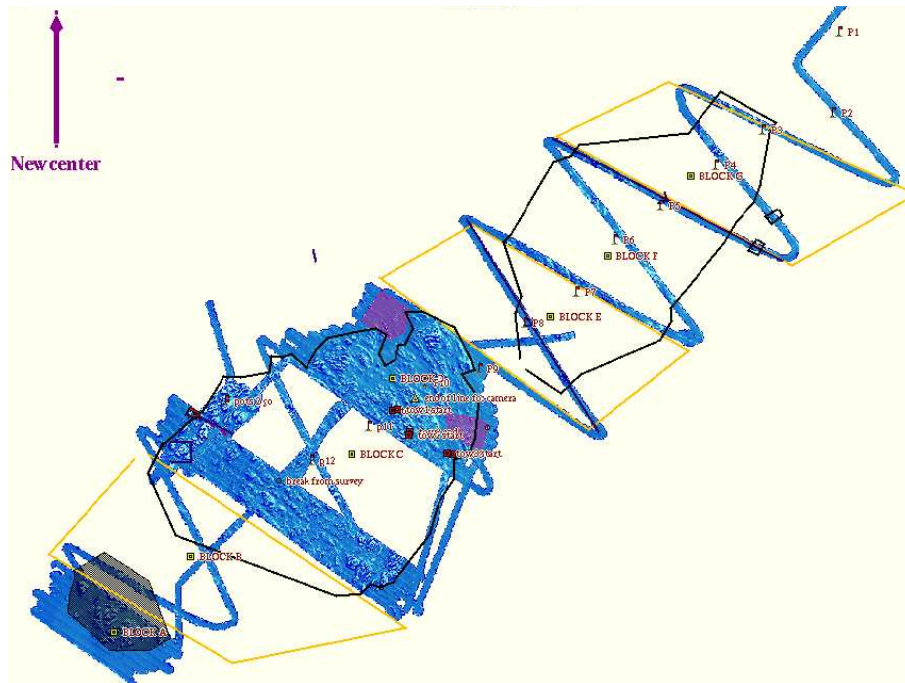


Figure 4 Completed proportion of planned MB survey (Aim 2)