

**CENTRE FOR ENVIRONMENT, FISHERIES AND AQUACULTURE SCIENCE
LOWESTOFT LABORATORY, SUFFOLK, NR33 0HT**

2016 RV Cefas Endeavour Programme: CEND06/16

TOTAL DURATION: 18th April-19th April 2016

Depart Monday 18th April: Lowestoft (~07:30)

Return Tuesday 19th April: Lowestoft (~08:15)

STAFF:

Sue Ware (SIC) SIC Cabin

Day Shift

Bill Meadows (SL) B2

Annie Brown C5

Night Shift

Marc Whybrow (SL) B1

James Cook C2

Neil Needham C3

GENERAL LOCATION: Gear Trials

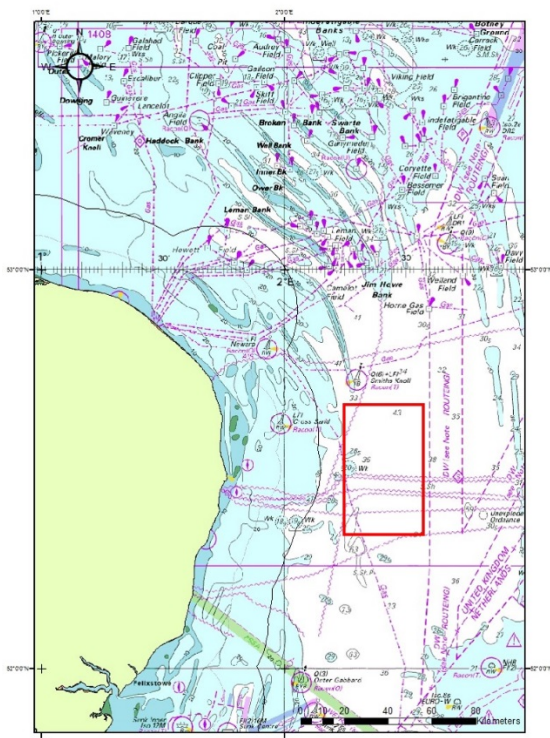


Figure 1. Gear trials survey location.

Survey Objectives

Cefas have taken delivery of a major capital item in January (Deep water camera system) and are required to prove it in the field before actual use on surveys planned in May/June. A replacement sidescan towfish is also being tested along with some new acoustic beacons obtained as a result of satisfactory trials using the HIPAP positioning system. The trials are detailed by Aim, Equipment, method and results/output.

High level aims can be categorised as:

- MPA survey capability–Verification/development of equipment critical to multidisciplinary survey work.
- Vessel capability–Verification/development of equipment critical for a range of multidisciplinary surveys.

The aims are listed in priority order. The completion of aims lower in priority will be subject to high priority aim completion. Specific aims and outputs are as follows:

1. Camera trials

- Proves vessel fibre optic infrastructure is working,
- New cameras able to be deployed routinely on drop and 2000m fibreoptic cable off starboard gantry. New cameras able to be deployed via 500m coax tow cable off aft gantry using camera sledge,
- Re- Assessment of camera system performance – specifically the HD camera.

2. Sidescan evaluation

- Proves Edgetech sidescan is able to be positioned using best available information (Cable out in real time, HIPAP in Transponder and Responder mode),
- Proves Benthos sidescan is/isn't viable as a backup system.