

**DEPARTMENT FOR ENVIRONMENT, FOOD AND RURAL AFFAIRS.**  
2007 RESEARCH VESSEL PROGRAMME: *RV CEFAS ENDEAVOUR*  
Survey Programme: C END 15/07

**STAFF**

**Part A:**

D Limpenny (SIC)  
P Whomersley  
Helen Bates  
Roger Coggan  
Markus Diesing  
Chris Barrio-Frojan  
Koen Vanstaen  
Bill Meadows  
Annie Brown  
Chris Harper (UKHO) (from 22<sup>nd</sup> July)

**Part B:**

D Limpenny (SIC)  
K Cooper  
Helen Bates  
Roger Coggan  
Markus Diesing  
Chris Barrio-Frojan  
Koen Vanstaen  
Annie Brown (Until 28<sup>th</sup> July)  
Nigel Lyman (From 28<sup>th</sup> July)  
Chris Harper (UKHO)

**DURATION:**

**Part A** : 21st July – 26<sup>th</sup> July  
**Part B** : 26<sup>th</sup> July - 3<sup>rd</sup> August

Changeovers at sea, at appropriate Cornish ports

**LOCALITY:**

Lizard and Cape Cornwall Bank/Lands End

**AIMS:**

1. To conduct multidisciplinary (acoustic and sampling) surveys within two predefined areas off the Lizard and Cape Cornwall Bank areas of the south-west peninsular of England (Fig 1). This work is in support of Natural England's requirement to designate SACs under the EU Annex I Habitats Directive.

**PLAN:**

Cefas Endeavour will sail from Portland on 21st July. After conducting a multibeam calibration exercise at a suitable location between Portland and the Lizard she will commence acoustic

(sidescan sonar, multibeam and AGDS) surveys within the predefined Lizard area. On completion of the acoustic work at this site, the vessel will sail to the Cape Cornwall Bank/Lands End area to conduct similar work. We will get Chris Harper (UKHO) on-board via small boat at a convenient port. A further crew change will take place via small boat on the 26<sup>th</sup> July at a suitable location on the Cornish coast. On completion of the acoustic work at both of the sites, a series of camera tows, grabs, 2m beam trawls and dredges will be conducted over the acoustic lines in both areas to provide groundtruthing and biological information. A further crew change will enable Nigel Lyman to join the vessel on 28<sup>th</sup> July, via small boat, at a suitable Cornish port. On completion of the work, we will put Chris Harper back ashore at a convenient SW port, and Cefas Endeavour will sail to Lowestoft, docking on 3<sup>rd</sup> August.

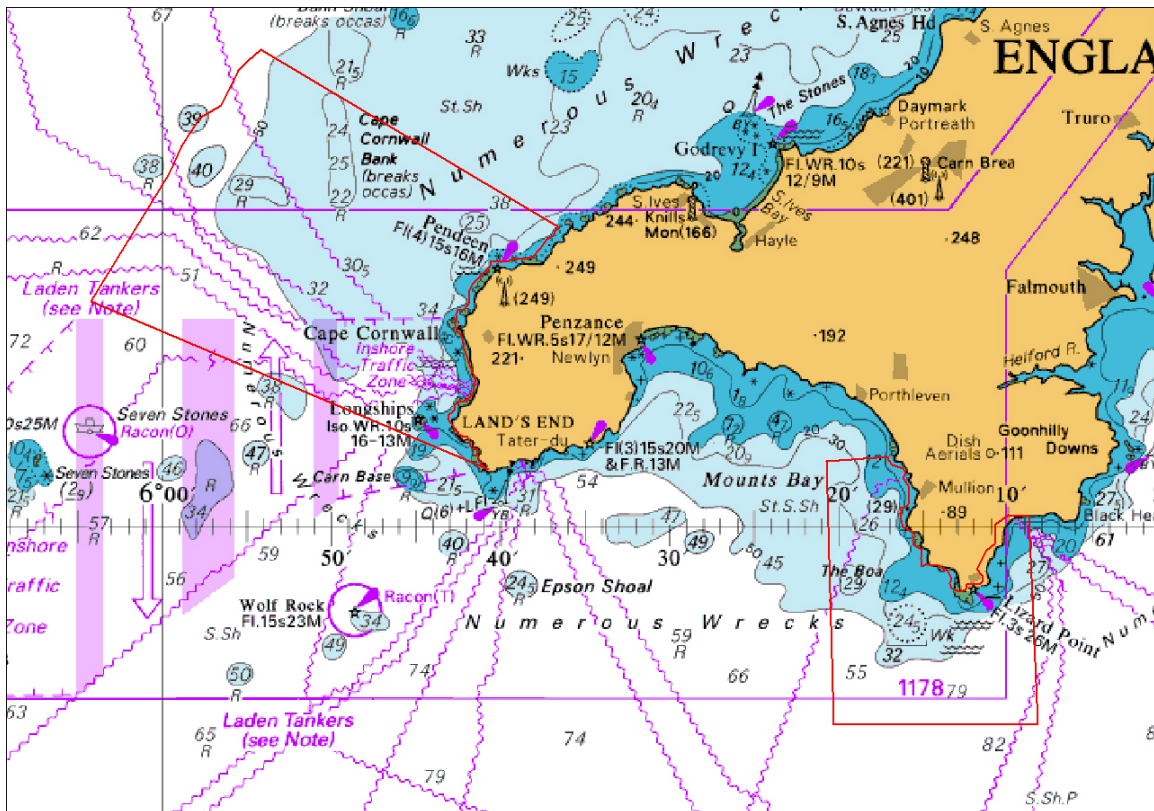


Figure 1. The two areas of interest are enclosed within the red polygons.

#### DISTRIBUTION:

All scientific cruise personnel +  
 Stefan Bolam  
 Jacqueline Eggleton  
 Suzanne Ware  
 M Waldock  
 S Malcolm  
 L Murray  
 H Rees  
 C Vivian  
 J Rees  
 W Camplin  
 S Boyd  
 S Kupschus  
 B Harley