

**CENTRE FOR ENVIRONMENT, FISHERIES & AQUACULTURE SCIENCE  
LOWESTOFT LABORATORY, LOWESTOFT, SUFFOLK, ENGLAND**

**2010 RESEARCH VESSEL PROGRAMME**

PROGRAMME: RV CEFAS ENDEAVOUR: CRUISE 15/10

PROJECT: MB001A

STAFF: J.M.ELSON  
A.M.LEOCADIO  
A.R.LAWLER  
D.EATON  
D.PALMER  
J. DOYLE (Marlab)  
K.R.VANSTAEN  
R.WILKINS  
M. WHYBROW (MIS)

DURATION: 4 - 14 October

LOCALITY: North Sea (English NE and E Coast)

**AIMS:**

1. To conduct a standard underwater TV survey of Nephrops burrow densities on the Farn Deeps grounds, 55° 35' - 54° 45' N and 1° 30' - 0° 40' W, and to evaluate Nephrops abundance.
2. To characterise sediment features at and between TV survey stations using swathe bathymetry.
3. To carry out a preliminary survey of the Botney Gut Silver Pit grounds 54° 15' - 53° 35' N and 1° 35' - 3° 10' E to evaluate Nephrops abundance.

**PLAN:**

CEFAS ENDEAVOUR will sail on 4 October and will return to Lowestoft on 14 October. Video data will be collected from cameras mounted on a towed sledge. On the Farn Deeps grounds, 110 stations will be visited (80 priority 1 stations; 8 priority 2 stations; 17 priority 3 stations and 5 additional stations) with the aim of recording a clear 10 minute continuous video transect of the sea bed at each (Figure 1).

If weather and logistics allow 36 stations on the Botney Gut Silver Pit grounds (21 priority 1 and 15 priority 2) will be visited and the same data collected (Figure 2).

All video will be analysed and the counts confirmed at sea.

JON ELSON  
(Scientist-in-Charge)  
27 August 2010

INITIALLED: JTA

**DISTRIBUTION:**

Basic list + A.M.LEOCADIO A.R.LAWLER D.EATON  
D.W.PALMER J. DOYLE (Marlab) K.R. VANSTAEN R.WILKINS M.  
WHYBROW (MIS)

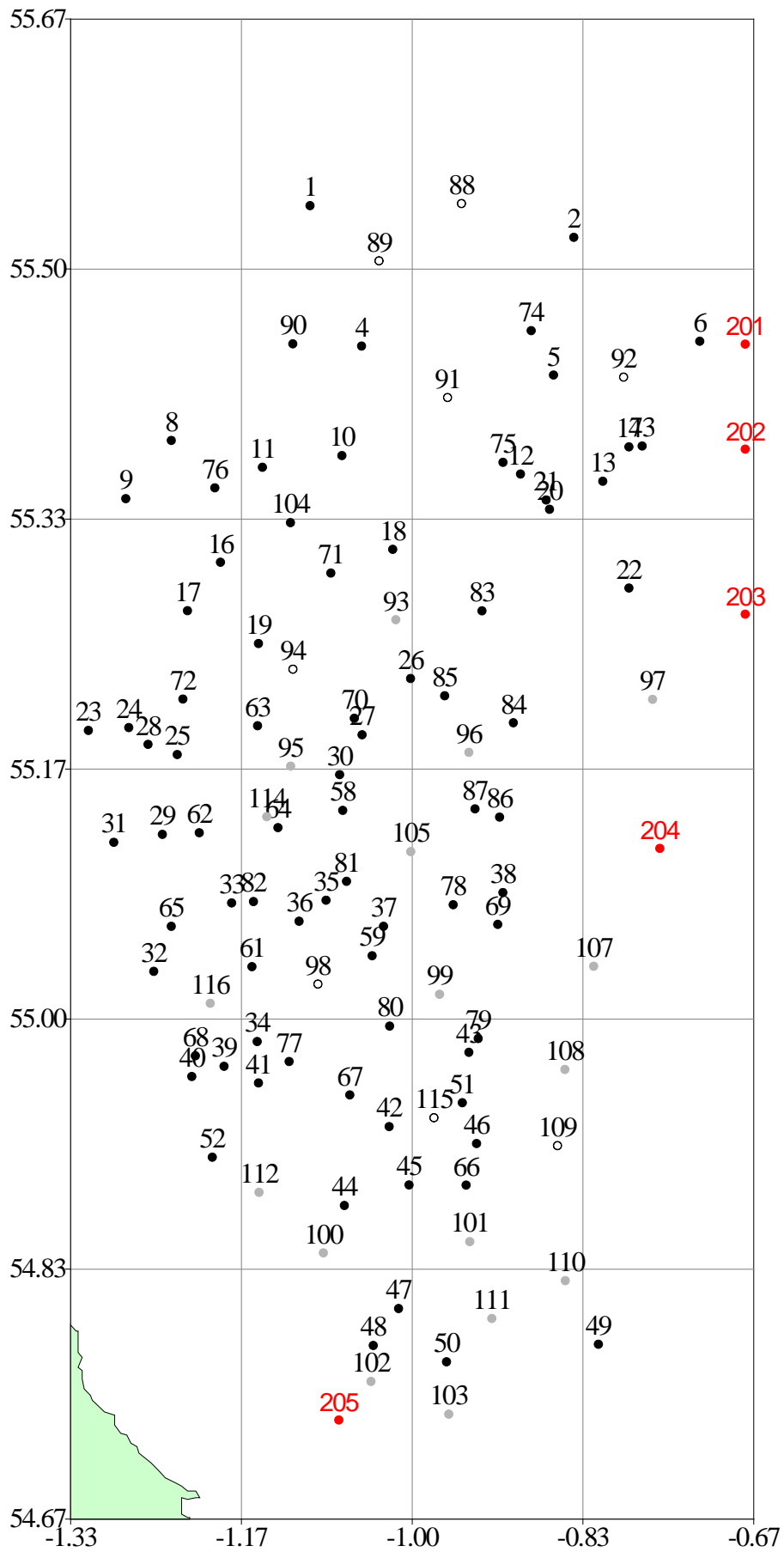


Figure 1. Farn Deep station positions

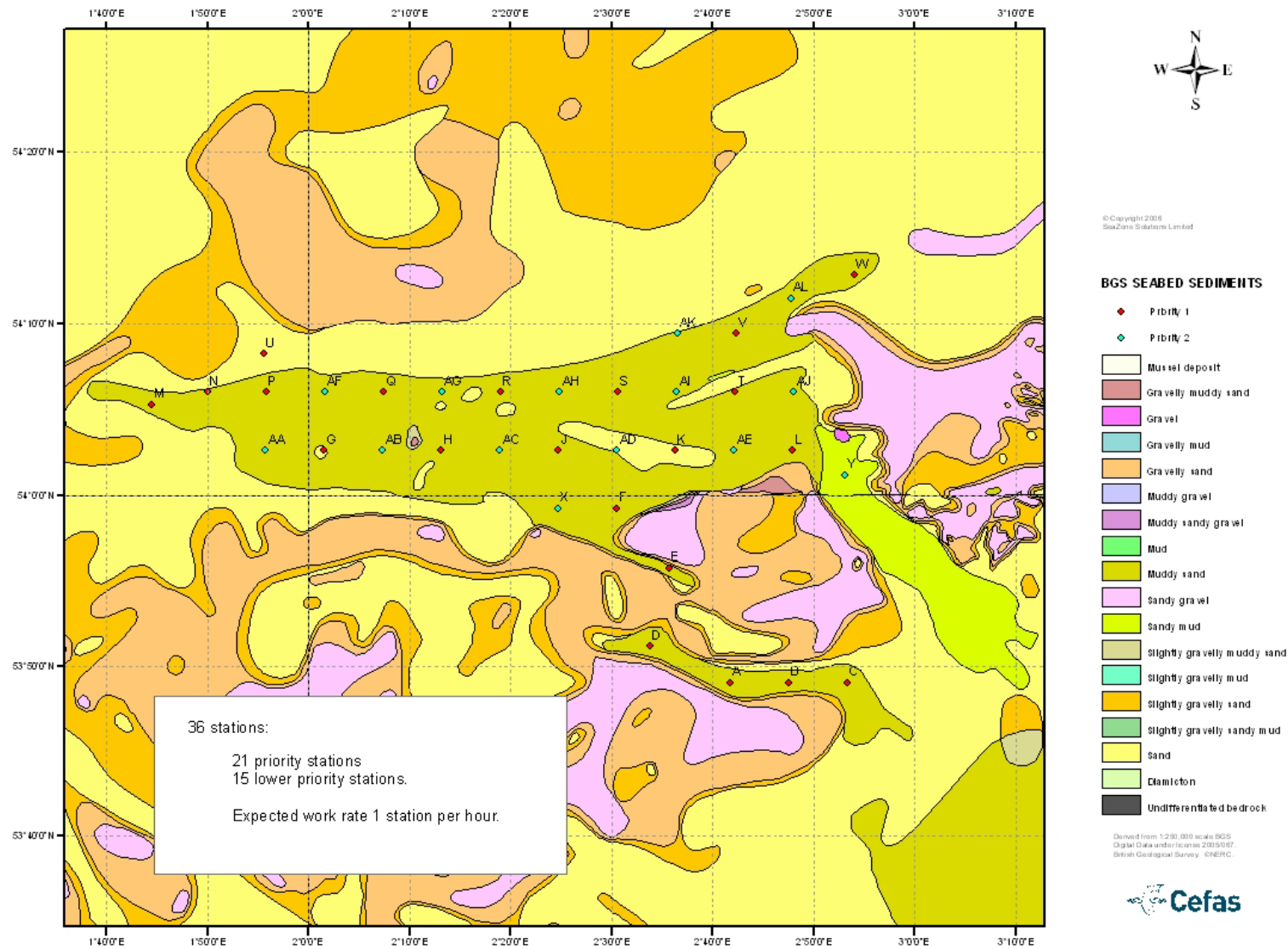


Figure 2 Silver Pit and Botney Gut station positions.