

Not to be cited without prior reference to the FRS Marine Laboratory, Aberdeen.

**Programmes: Sea loch fieldwork 2008 Part I**

1. SPIES Detox Auto-sampler tests(C77100)
2. Loch circulation model validation (FC11102)
3. CAPTOR buoy deployment (AE11100)

23-27 June 2008

**Locations:**

Loch Ewe, Ross-shire  
Loch Shieldaig & Loch Torridon, Ross-shire

**Personnel:**

D Lichtman  
M Geldart  
G Hermann

**Vessels and transport:**

*MV Glen Tarff*  
*MV FRAM*  
Ford Ranger  
Estate  
Pick-up truck

**Objectives:**

- Carry out auto-sampler tests in Loch Ewe;
  - Recover two Tide gauges from Loch Ewe;
  - Deploy Aanderaa Data Buoy in Loch Shieldaig;
  - Deploy Captor Buoy with Sontek current meter;
  - Carry out CTD dips in Loch Torridon / Shieldaig (if time allows).
- 1 Test SPIES Detox Auto-sampler.
  - 2 To collect data to verify loch circulation models. Two moored water level recorders were deployed at locations in Loch Ewe in February 2008. The aim is to recover these instruments from Loch Ewe and re-deploy the AADI data buoy in Loch Shieldaig.
  - 3 The CAPTOR buoy is to be re-deployed with the addition of a Sontek XR current meter set up to measure the surface flow close to the buoy.

Equipment for Water Framework Directive sampling will be delivered to the staff at the Shieldaig Field Station.

### **Procedure**

Staff and equipment will travel to Loch Ewe on Monday 23 June.

Staff will meet *MV Glen Tarff* and load the equipment on board. The Water Sampler will then be set up and deployed (at about 57° 50' 34" N, 5° 37' 27" W). The following day the Tide gauges, deployed in February, will be recovered. In addition, a bag change of the Water Sampler will occur. G Hermann will remain in Loch Ewe for the remainder of the week, carrying out bag changes as required. D Lichtman and M Geldart will travel to Shieldaig.

On Wednesday 25 June the telemetry receiving equipment for the Aanderaa Data Buoy will be set up at the FRS Shieldaig Field Station.

On Thursday 26 June, The Data buoy, CAPTOR buoy and anchor weights will arrive in the morning and all equipment will be loaded onto *MV FRAM*. The Aanderaa Data Buoy and CAPTOR buoy will be deployed. CTDs will be undertaken. D Lichtman and M Geldart will then return to Loch Ewe.

On Friday 27 June, following a briefing from G Hermann, any further work to the Water sampler will be carried out on the *MV Glen Tarff*. All equipment will be landed and loaded into the Ranger.

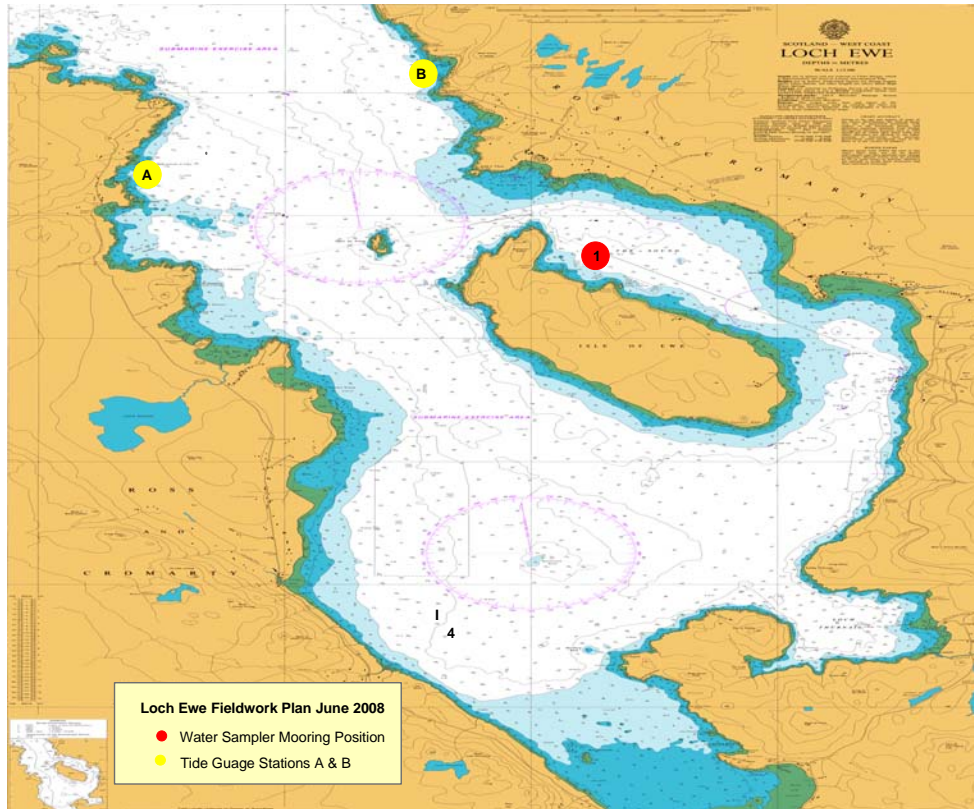
Laboratory staff will return to Aberdeen on 27 June.

### **Contacts:**

Dougal Lichtman	07931 584 192
Matt Geldart	0774 927 1199
Guillaume Hermann	0777 213 7784
FRS ML Fish Cultivation Unit	01445 731437
FRS Shieldaig Field Station	01520 755792
Jane & Willie Grant ( <i>MV Glen Tarff</i> )	01445 731477
Kenny Livingstone ( <i>MV Fram III</i> )	01520 755281

*J W Hepburn*  
20 June 2008

# Loch Ewe



# Loch Shieldaig & Loch Torridon

