

P17/8

Not to be cited without prior reference to the FRS Marine Laboratory, Aberdeen

PROGRAMME

Charter Fishing Vessel *Fram III*

3-6 November 2008

Location

Loch Shieldaig & Loch Torridon, Ross-shire

In setting the cruise programme and specific objectives, etc the Scientist-in-Charge needs to be aware of the restrictions on working hours and the need to build in adequate rest days and rest breaks as set out in FRS' Working Time Policy (Lab Notice 34/03). In addition, the Scientist-in-Charge must formally review the risk assessments for the cruise with staff on-board before work is commenced.

In the interest of efficient data management it is now mandatory to return the Cruise Report, to Iain Gibb and the Cruise Summary Report (old ROSCOP form) to Dougal Lichtman, within four weeks of a cruise ending. In the case of the Cruise Summary Report a nil return is required, if appropriate.

Personnel

D Lichtman
M Geldart

Project: Loch circulation model validation (FC11102) and CAPTOR buoy recovery (AE11100)

Vessels and Transport

MV Fram III
Ranger/estate car
Pick-up truck

Objectives

1. Service Aanderaa environmental data buoy;
2. Recover CAPTOR buoy;
3. Check Aanderaa data buoy base station computer.

Procedure

Staff will travel to Shieldaig on the 3 November.

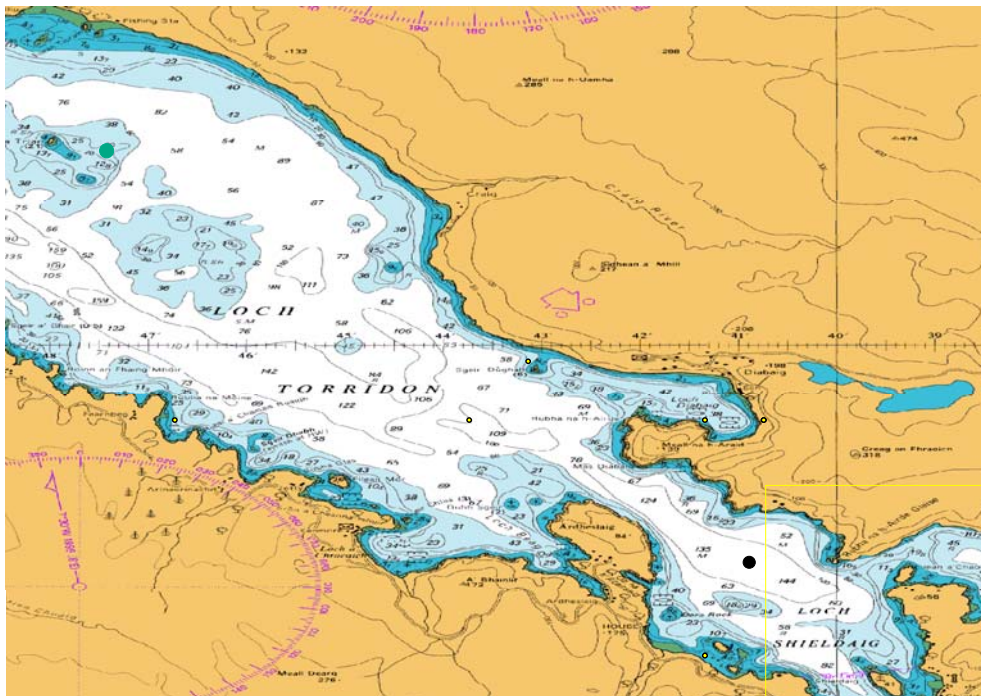
Most of the work on board the *Fram* will be carried out on both 4 and 5 November. The base station computer will be checked as time allows. The CAPTOR buoy will be collected, by pick-up truck, on 6 November.

Staff will return to Aberdeen on the afternoon of 6 November.

The fieldwork will only be carried out in good weather and may be postponed until the following week.

Contacts

D Lichtman	07931 584192
FRS FL Shieldaig Field Station	01520 755792



Submitted
D Lichtman
27 October 2008

Approved
I Gibb
28 October 2008