

R1/6

Not to be cited without prior reference to Marine Scotland, Marine Laboratory, Aberdeen

FRV *Alba na Mara*

Cruise 0310A

## **REPORT**

15-29 March 2010

## **PORTS**

**Loading:** 12 March, Fraserburgh

**Unloading:** 29 March, Fraserburgh

## **Personnel**

S Davis

SIC

J Turriff

**Fishing Gear:** Scallop Dredges

**Cost to project:** 15 days – MF01ta

## **Objectives**

1. To carry out a survey of scallop stocks around Shetland;
2. To collect information on by-catches of other commercial fish and shellfish species;
3. To collect biological data on scallop growth rates.

## **Narrative**

Scientific staff joined FRV *Alba na Mara* at 1000hrs on 15 March and the vessel left Fraserburgh at 1300hrs, arriving Scalloway Bay at 0500hrs the next day. Sampling began off Scalloway at 1200hrs on 16 March and continued circumnavigating the islands until all stations were completed at 1400hrs on 26 March. The vessel then made for port arriving in Fraserburgh at 0700hrs on 27 March. Scientific staff returned to the laboratory with all equipment and samples on the morning of 29 March.

## **Results**

During the trip 87 dredge hauls were made and a total of 12,870 scallops were caught. The position of each haul is shown on the map in Figure 1. Catch rates at each station varied from a minimum of 1 to a maximum of 111 scallops per metre dredge width, per hour. The aggregate catch rates for each area, also expressed in numbers of scallops per metre dredge width per hour, by age are shown in Figure 2. The individual graph headings in Figure 2 show the overall catch rate for each area. The length frequencies in numbers caught per half centimetre length category are shown in Figure 3. The numbers of each by-catch species caught is given in Table 1.

Submitted: *S Davis*, 31 March 2010

Approved: *I Gibb*, 12 April 2010.

**TABLE 1**

SPECIES	NUMBER CAUGHT
<i>Aequipecten opercularis</i>	1367
<i>Aritica Islandica</i>	5
<i>Buccinum undatum</i>	184
<i>Cancer pagurus B</i>	2
<i>Cancer pagurus F</i>	124
<i>Cancer pagurus M</i>	183
<i>Lithodes maja M</i>	1
<i>Lophius piscatorius</i>	162
<i>Lepidorhombus whiffiagonis</i>	5
<i>Microstomus kitt</i>	16
<i>Myoxocephalus scorpius</i>	4
<i>Neptunea antiqua</i>	724
<i>Pleuronectes platessa</i>	58
<i>Psetta maxima</i>	1
<i>Raja Batis M</i>	5
<i>Raja clavata F</i>	1
<i>Raja clavata M</i>	6
<i>Raja montaquii F</i>	2
<i>Raja montaquii M</i>	6
<i>Raja naevus F</i>	54
<i>Raja naevus M</i>	38
<i>Hippoglossoides platessoides</i>	7
<i>Scyliorhinus canicula M</i>	5
<i>Scyliorhinus canicula F</i>	4
<i>Solea solea</i>	1
<i>Glyptocephalus cynoglossus</i>	6
<i>Zeugopterus punctatus</i>	1

Figure 1

Shetland Scallop Survey 2010

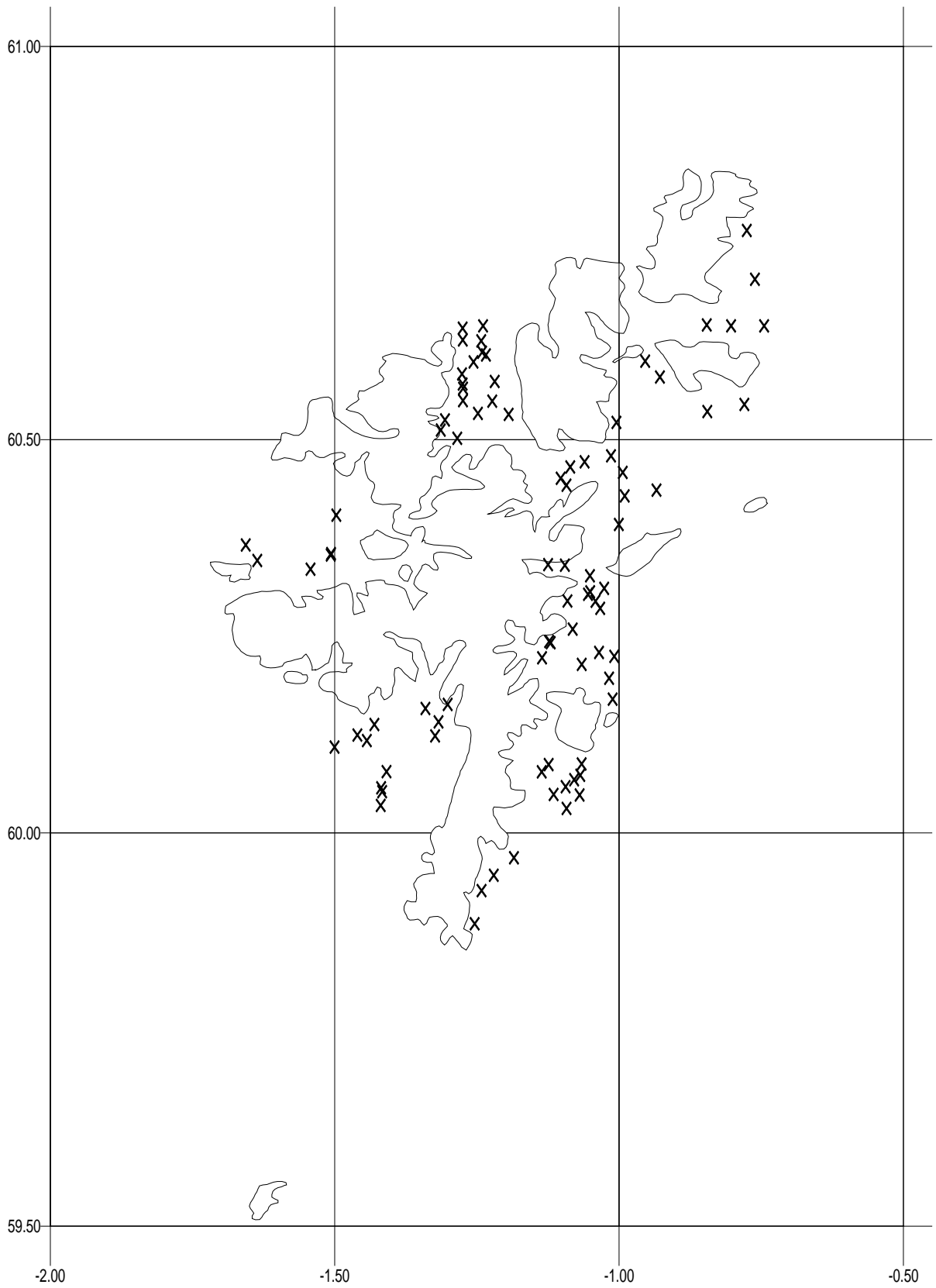


Figure 2.

# Shetland Scallop Survey 2010

## Catch Rate by Age in Area

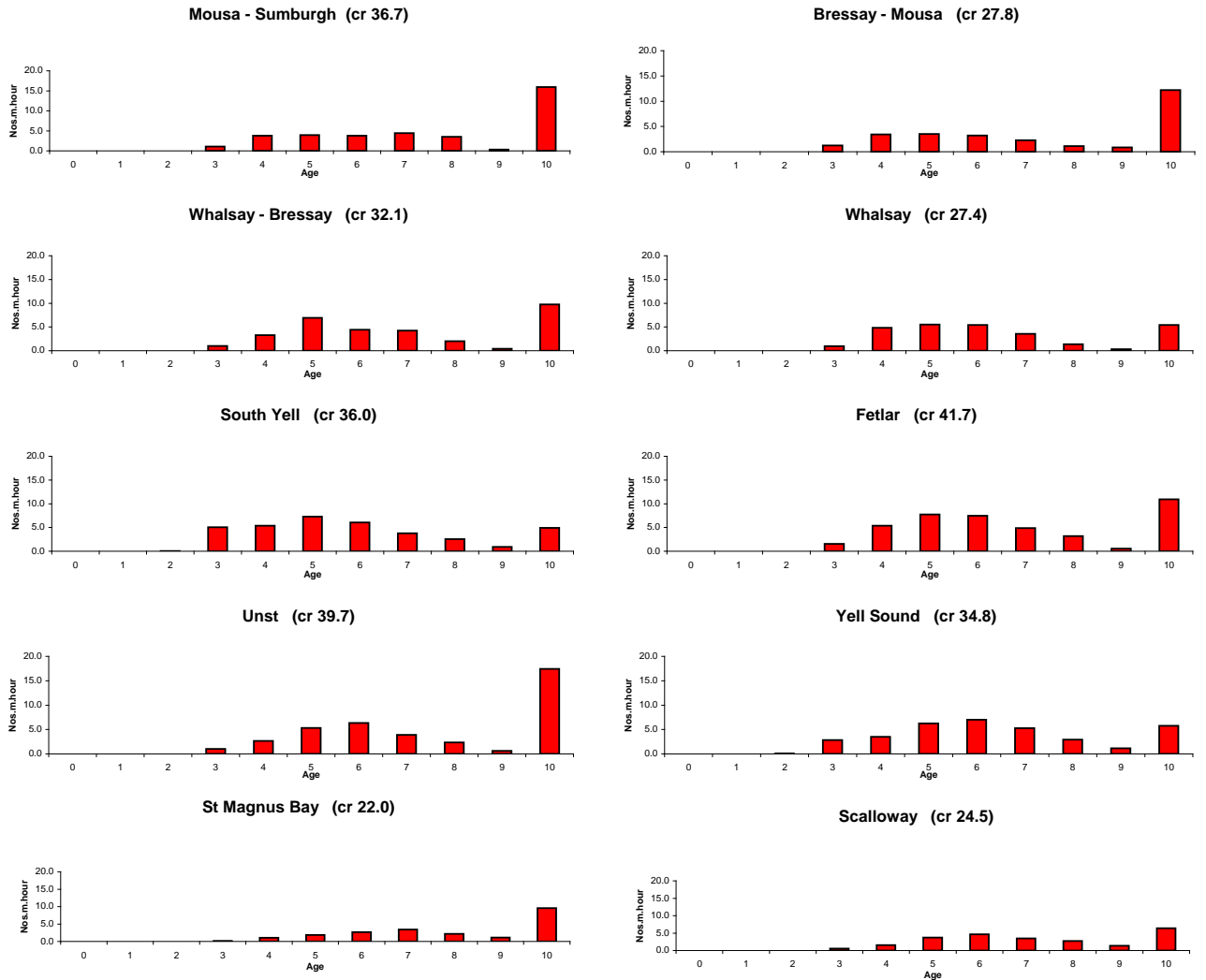


Figure 3.

# Shetland Scallop Survey 2010 Numbers at Size in Area

