

International Ocean Discovery Program Expedition 357 Preliminary Report

Atlantis Massif Serpentinization and Life

26 October–11 December 2015

**Onshore Science Party
20 January–5 February 2016**

Gretchen L. Früh-Green, Beth N. Orcutt, Sophie Green, Carol Cotterill,
and the Expedition 357 Scientists

Publisher's notes

Core samples and the wider set of data from the science program covered in this report are under moratorium and accessible only to Science Party members until 4 February 2017.

This publication was prepared by the European Consortium for Ocean Research Drilling (ECORD) Science Operator (ESO) and Texas A&M University as an account of work performed under the International Ocean Discovery Program (IODP). Funding for the program is provided by the following international partners:

National Science Foundation (NSF), United States
Ministry of Education, Culture, Sports, Science and Technology (MEXT), Japan
European Consortium for Ocean Research Drilling (ECORD)
Ministry of Science and Technology (MOST), People's Republic of China
Korea Institute of Geoscience and Mineral Resources (KIGAM)
Australia-New Zealand IODP Consortium (ANZIC)
Ministry of Earth Sciences (MoES), India
Coordination for Improvement of Higher Education Personnel, Brazil (CAPES)

Portions of this work may have been published in whole or in part in other International Ocean Discovery Program documents or publications.

Disclaimer

Any opinions, findings, and conclusions or recommendations expressed in this publication are those of the author(s) and do not necessarily reflect the views of the participating agencies, the ECORD Science Operator (ESO), or Texas A&M University.

Copyright

Except where otherwise noted, this work is licensed under a [Creative Commons Attribution License](#). Unrestricted use, distribution, and reproduction is permitted, provided the original author and source are credited.

Citation

Früh-Green, G.L., Orcutt, B.N., Green, S., Cotterill, C., and the Expedition 357 Scientists, 2016. *Expedition 357 Preliminary Report: Atlantis Massif Serpentinization and Life*. International Ocean Discovery Program.
<http://dx.doi.org/10.14379/iodp.pr.357.2016>

ISSN

World Wide Web: 2372-9562

Expedition 357 science party

Expedition 357 scientists

Gretchen L. Früh-Green

Co-Chief Scientist (Metamorphic Petrologist), offshore and onshore
 Institute of Geochemistry and Petrology
 ETH Zürich
 Clausiusstrasse 25, NW E 76.2
 CH-8092 Zürich
 Switzerland
frueh-green@erdw.ethz.ch

Beth N. Orcutt

Co-Chief Scientist (Microbiologist), offshore and onshore
 Bigelow Laboratory for Ocean Sciences
 60 Bigelow Drive
 PO Box 380
 East Boothbay ME 04544
 USA
borcutt@bigelow.org

Sophie Green

Expedition Project Manager, onshore
 ECORD Science Operator
 British Geological Survey
 The Lyell Centre
 Research Avenue South
 Edinburgh EH14 4AP
 United Kingdom
soph@bgs.ac.uk

Carol Cotterill

Expedition Project Manager, offshore and onshore
 ECORD Science Operator
 British Geological Survey
 The Lyell Centre
 Research Avenue South
 Edinburgh EH14 4AP
 United Kingdom
cjcott@bgs.ac.uk

Sally Morgan

Petrophysics Staff Scientist, offshore and onshore
 European Petrophysics Consortium
 Department of Geology
 University of Leicester
 University Road
 Leicester LE1 7RH
 United Kingdom
sm509@le.ac.uk

Norikatsu Akizawa

Igneous Petrologist, onshore
 Kanazawa University
 Department of Earth Sciences
 Kakuma
 Kanazawa, Ishikawa
 920-1192
 Japan
nori.plus.x@gmail.com

Gaye Bayrakci

Physical Properties Specialist/ Geophysicist, offshore and onshore
 University of Southampton
 Ocean and Earth Science
 National Oceanography Centre
 Southampton
 Southampton
 United Kingdom
G.Bayrakci@soton.ac.uk

Jan-Hinrich Behrmann

Physical Properties Specialist, onshore
 GEOMAR Helmholtz Centre for Ocean Research Kiel
 Wischhofstrasse 1-3
 24148 Kiel
 Germany
jbehrmann@geomar.de

Emilio Herrero-Bervera

Paleomagnetist, onshore
 University of Hawaii at Manoa
 SOEST-Hawaii Institute of Geophysics and Planetology (HIGP)
 1680 East West Road POST 716
 Honolulu HI 96822
 USA
herrero@soest.hawaii.edu

Chiara Boschi

Metamorphic Petrologist, onshore
 Institute of Geosciences and Earth Resources—CNR
 Via Moruzzi 1
 Pisa 56124
 Italy
c.boschi@igg.cnr.it

William Brazelton

Microbiologist, onshore
 University of Utah
 257 South 1400 East, Room 201
 Salt Lake City UT 84112-0840
 USA
william.brazelton@utah.edu

Mathilde Cannat

Igneous Petrologist/Structural Geologist, onshore
 Equipe de Géosciences Marines
 Institut de Physique du Globe de Paris
 Sorbonne Paris Cité
 Univ Paris Diderot
 UMR 7154 CNRS.1, rue Jussieu
 75238 Paris Cedex 05
 France
cannat@ipgp.fr

Kristina G. Dunkel

Physical Properties Specialist/ Metamorphic Petrologist, onshore
 Physics of Geological Processes
 University of Oslo
 Sem Sælands vei 24
 0371 Oslo
 Norway
kristina.dunkel@geo.uio.no

Javier Escartin

Structural Geologist/Physical Properties Specialist, onshore
 CNRS UMR 7154, IPGP
 1 rue Jussieu
 75005 Paris
 France
escartin@ipgp.fr

Michelle Harris

Metamorphic Petrologist, onshore
 109 Fitzroy Building
 Plymouth University
 Drake Circus
 Plymouth
 Devon PL4 8AA
 United Kingdom
michelle.harris@plymouth.ac.uk

Kirsten Hesse

Igneous Petrologist, onshore
 GeoZentrum Nordbayern, Lehrstuhl für Mineralogie
 Friedrich-Alexander-University
 Erlangen-Nuremberg
 Schlossgarten 5a
 91054 Erlangen
 Germany
kirsten.hesse@fau.de

Barbara John**Structural Geologist, onshore**

Department of Geology and Geophysics
University of Wyoming
Laramie WY 82071
USA
bjohn@uwyo.edu

Susan Q. Lang**Organic Geochemist, offshore and onshore**

Department of Earth and Ocean
Sciences
University of South Carolina
701 Sumter Street EWS 617
Columbia SC 29208
USA
slang@geol.sc.edu

Marvin Lilley**Fluid and Gas Geochemist, offshore and onshore**

University of Washington
Box 355351
Seattle WA 98195
USA
lilley@uw.edu

Hai-Quan Liu**Geochemist, onshore**

Key Laboratory of Marginal Sea
Geology
Guangzhou Institute of Geochemistry
Chinese Academy of Sciences
Guangzhou
China
liuhaiquan@gig.ac.cn

Lisa Mayhew**Geochemist, onshore**

Department of Geological Sciences
University of Colorado—Boulder
2200 Colorado Avenue
UCB 399
Boulder CO 80309
USA
lisa.mayhew@colorado.edu

Andrew McCaig**Structural Geologist, onshore**

University of Leeds
School of Earth and Environment
University of Leeds
Leeds LS2 9JT
UK
a.m.mccaig@leeds.ac.uk

Benedicte Menez**Geomicrobiologist, onshore**

Institut de Physique du Globe de Paris
1 rue Jussieu
75238 Paris Cedex 05
France
menez@ipgp.fr

Yuki Morono**Microbiologist, offshore and onshore**

Japan Agency for Marine-Earth Science
and Technology
Kochi Institute for Core Sample
Research
Monobe B200
Nankoku, Kochi
783-8502
Japan
morono@jamstec.go.jp

Marianne Quéménéur**Microbiologist, offshore and onshore**

Mediterranean Institute
of Oceanography (MIO), UM110
163 avenue de Luminy
13288 Marseille Cedex 9
France
marianne.quemeneur@ird.fr

Amila Sandaruwan Ratnayake**Organic Geochemist, onshore**

Shimane University
Faculty of Science and Engineering
1060 Nishikawatsu
Matsue
690-8504 Shimane
Japan
amilageopera@gmail.com

Stéphane Rouméjon**Metamorphic Petrologist, onshore**

ETH Zurich
Institute of Geochemistry and
Petrology
Sonneggstrasse 5
8092 Zurich
Switzerland
stephane.roumejon@erdw.ethz.ch

Matthew Schrenk**Microbiologist, offshore and onshore**

Michigan State University
288 Farm Lane, Room 144
East Lansing MI 48824
USA
schrenkm@msu.edu

Esther Schwarzenbach**Metamorphic Petrologist, onshore**

Institute of Geological Sciences
Freie Universität Berlin
Malteserstrasse 74-100
12249 Berlin
Germany
esther.schwarzenbach@fu-berlin.de

Katrina Twing**Microbiologist, offshore**

Department of Biology
University of Utah
257 South 1400 East, Room 201
Salt Lake City UT 84112-0840
katrina.twing@utah.edu

Dominique Weis**Geochemist, onshore**

University of British Columbia
Earth, Ocean and Atmospheric
Sciences
2020-2207 Main Mall
Vancouver BC V6T-1Z4
Canada
dweis@eos.ubc.ca

Scott Andrew Whattam**Igneous Petrologist, onshore**

Korea University
Department of Earth and
Environmental Sciences
Seoul 02-841
Republic of Korea
whattam@korea.ac.kr

Morgan Williams**Igneous Petrologist, onshore**

Research School of Earth Sciences
The Australian National University
Building 142
Mills Road
Acton ACT 2601
Australia
Morgan.williams@anu.edu.au

Rui Zhao**Microbiologist, onshore**

Centre for Geobiology, Department
of Biology
University of Bergen
Allegaten 41
5007 Bergen
Norway
rui.zhao@bio.uib.no

ECORD Science Operator personnel and technical representatives

David Smith*
Offshore Operations Manager

Ursula Röhl
Laboratory and Curation Manager/
Onshore Operations Manager

Gareth Carter
Expedition Project Manager in-training
(EPM in-training)

Walter Hale
Core Curator

Thomas Frederichs
ESO Paleomagnetist

Rhonda Kappler
Publications Specialist (USIO)

Brit Kockisch
LECO Operator

Holger Kuhlmann*
Core Curator/Assistant Laboratory
Manager

Erwan Le Ber
EPC Petrophysics Technician

Vera Lukies
ESO Petrophysics Technician

Mary Mowat
ESO Database Manager

Silvana Pape
Geochemistry Technician

Laurence Philpott
EPC Petrophysics Technician

Luzie Schnieders*
ESO Geochemist

Janet Sherwin
EPC Petrophysics Technician

Christoph Vogt
XRD Specialist

Hans-Joachim Wallrabe-Adams*
ESO Data Manager

Alex Wülbers*
Core Curator/Logistics

BCR/MARUM, University of Bremen (temporary student assistants)

Roles included core handling, core splitting, sampling, data entry, and catering

Tobias Beck

Robert Büssing

Lars Feddeck

Lara Gebhard

Lara Jacobi

Verena Junge

Anna Quatmann-Hense

Nina Rohlf

Alexander Rösner

Jana Schroeder

Christopher Vogel

Julian Wecht

Jessica Zarnowski

Marc Zehnich

British Geological Survey (BGS) Rock Drill 2 (RD2)

Iain Pheasant[†]
RD2 shift leader

Michael Wilson[†]
RD2 shift leader

Rodrigue Akkari[†]
RD2 Team

Garry McGowan[†]
RD2 Team

Joseph Hothersall[†]
RD2 Team

Apostolos Tsiligiannis[†]
RD2 Team

David Baxter[†]
RD2 mobilization/demobilization only

Keith Gibson[†]
RD2 mobilization/demobilization only

Alan Gillies[†]
RD2 mobilization/demobilization only

MARUM, University of Bremen MeBo Seafloor Drill Rig

Tim Freudenthal[†]
MeBo Team Leader

Markus Bergenthal[†]
MeBo Team

Siefke Froehlich[†]
MeBo Team

Kai Kaszemeik[†]
MeBo Team

Steffen Klar[†]
MeBo Team

Thorsten Klein[†]
MeBo Team

Kees Noorlander[†]
MeBo Team

Werner Schmidt[†]
MeBo Team

Marcus Kuhnert[†]
MeBo Team

Royal Research Ship (RRS) *James Cook*

John Leask[†]
Master

Stewart Mackay[†]
Chief Officer

Nicholas Norrish[†]
Second Officer

Samuel Vargas[†]
Third Officer

John Haughton[†]
Head Chef

Walter Link[†]
Chef

Peter Robinson[†]
Steward

Carl Piper[†]
Assistant Steward

Robert Brett[†]
Chief Engineer

Graham Bullimore[†]
Purser

Noel Doherty[†]
Third Engineer

Gary Slater[†]
Third Engineer

Christopher Kemp[†]
Second Engineer

Paul Damerall[†]
Electrical Technical Officer

Jarrod Welton[†]
Able Seaman

Shane Drury[†]
Able Seaman

Nicholas Byrne[†]
Able Seaman

Gerard Millar[†]
Able Seaman

Steven Duncan[†]
Petty Officer Deck

John Macdonald[†]
Chief Petty Officer Science

Andrew Maclean[†]
Chief Petty Officer Deck

Andrew Moore[†]
Systems Support Technician

* Participated in shipboard and shore-based operations.

† Participated in shipboard operations only.

Abstract

International Ocean Discovery Program (IODP) Expedition 357 successfully cored an east–west transect across the southern wall of Atlantis Massif on the western flank of the Mid-Atlantic Ridge to study the links between serpentinization processes and microbial activity in the shallow subsurface of highly altered ultramafic and mafic sequences that have been uplifted to the seafloor along a major detachment fault zone. The primary goals of this expedition were to (1) examine the role of serpentinization in driving hydrothermal systems, sustaining microbial communities, and sequestering carbon; (2) characterize the tectonomagmatic processes that lead to lithospheric heterogeneities and detachment faulting; and (3) assess how abiotic and biotic processes change with variations in rock type and progressive exposure on the seafloor. To accomplish these objectives, we developed a coring and sampling strategy based around the use of seabed rock drills—the first time that such systems have been used in the scientific ocean drilling programs. This technology was chosen in hopes of achieving high recovery of the carbonate cap sequences and intact contact and deformation relationships. The expedition plans also included several engineering developments to assess geochemical parameters during drilling; sample bottom water before and after drilling; supply synthetic tracers during drilling for contamination assessment; gather downhole electrical resistivity and magnetic susceptibility logs for assessing fractures, fluid flow, and extent of serpentinization; and seal boreholes to provide opportunities for future experiments.

Seventeen holes were drilled at nine sites across Atlantis Massif, with two sites on the eastern end of the southern wall (Sites M0068 and M0075), three sites in the central section of the southern wall north of the Lost City hydrothermal field (Sites M0069, M0072, and M0076), two sites on the western end (Sites M0071 and M0073), and two sites north of the southern wall in the direction of the central dome of the massif and Integrated Ocean Drilling Program Site U1309 (Sites M0070 and M0074). Use of seabed rock drills enabled collection of more than 57 m of core, with borehole penetration ranging from 1.3 to 16.44 meters below seafloor and core recoveries as high as 75% of total penetration. This high level of recovery of shallow mantle sequences is unprecedented in the history of ocean drilling. The cores recovered along the southern wall of Atlantis Massif have highly heterogeneous lithologies, types of alteration, and degrees of deformation. The ultramafic rocks are dominated by harzburgites with intervals of dunite and minor pyroxenite veins, as well as gabbroic rocks occurring as melt impregnations and veins, all of which provide information about early magmatic processes and the magmatic evolution in the southernmost portion of Atlantis Massif. Dolerite dikes and basaltic rocks represent the latest stage of magmatic activity. Overall, the ultramafic rocks recovered during Expedition 357 revealed a high degree of serpentinization, as well as metasomatic talc-amphibole-chlorite overprinting and local rodingitization. Metasomatism postdates an early phase of serpentinization but predates late-stage intrusion and alteration of dolerite dikes and the extrusion of basalt. The intensity of alteration is generally lower in the gabbroic and doleritic rocks. Chilled margins in dolerite intruded into talc-amphibole-chlorite schists are observed at the most eastern Site M0075. Deformation in Expedition 357 cores is variable and dominated by brecciation and formation of localized shear zones; the degree of carbonate veining was lower than anticipated. All types of variably altered and deformed ultramafic and

mafic rocks occur as components in sedimentary breccias and as fault scarp rubble. The sedimentary cap rocks include basaltic breccias with a carbonate sand matrix and/or fossiliferous carbonate. Fresh glass on basaltic components was observed in some of the breccias.

The expedition also successfully applied new technologies, namely (1) extensively using an in situ sensor package and water sampling system on the seabed drills for evaluating real-time dissolved oxygen and methane, pH, oxidation-reduction potential, temperature, and conductivity during drilling; (2) deploying a borehole plug system for sealing seabed drill boreholes at four sites to allow access for future sampling; and (3) proving that tracers can be delivered into drilling fluids when using seabed drills. The rock drill sensor packages and water sampling enabled detection of elevated dissolved methane and hydrogen concentrations during and/or after drilling, with “hot spots” of hydrogen observed over Sites M0068–M0072 and methane over Sites M0070–M0072. Shipboard determination of contamination tracer delivery confirmed appropriate sample handling procedures for microbiological and geochemical analyses, which will aid all subsequent microbiological investigations that are part of the science party sampling plans, as well as verify this new tracer delivery technology for seabed drill rigs. Shipboard investigation of biomass density in select samples revealed relatively low and variable cell densities, and enrichment experiments set up shipboard reveal growth. Thus, we anticipate achieving many of the deep biosphere–related objectives of the expedition through continued scientific investigation in the coming years.

Finally, although not an objective of the expedition, we were serendipitously able to generate a high-resolution (20 m per pixel) multibeam bathymetry map across the entire Atlantis Massif and the nearby fracture zone, Mid-Atlantic Ridge, and eastern conjugate, taking advantage of weather and operational downtime. This will assist science party members in evaluating and interpreting tectonic and mass-wasting processes at Atlantis Massif.

Introduction

Drilling at Atlantis Massif focuses on two relatively recent discoveries in marine geosciences: off-axis serpentinite-hosted fluid circulation as exemplified by the Lost City hydrothermal field (LCHF) and oceanic core complexes (OCCs) as major components of slow-spreading ridges. An estimated 40% or more of the Atlantic Ocean floor was formed by interlinked processes of asymmetric extension, magmatism, and detachment faulting resulting in the exposure of mantle and lower crustal rocks in OCCs (Dick et al., 2008; Cannat et al., 2006; Smith et al., 2006, 2008; Ilderson et al., 2007; Escartín et al., 2008; Tucholke et al., 2008). OCCs incorporate highly reactive olivine-rich rocks that interact with seawater over a range of temperatures to produce both high- and low-temperature hydrothermal systems (Douville et al., 1997, 2002; Charlou et al., 1998, 2002; Sagalevich et al., 2000; Kelley et al., 2005; McCaig et al., 2007). Chemical exchange between the mantle and the hydrosphere supports abundant microbial communities in regions of focused fluid discharge in both types of systems (Schrenk et al., 2004; Takai et al., 2004; Nercessian et al., 2005; Brazelton et al., 2006; Campbell et al., 2006; Perner et al., 2007). However, it is unknown whether active microbial communities are also sustained by fluid–rock interaction in mantle-derived host rocks or in diffusely venting areas that sur-

round focused-flow sites. At Atlantis Massif, we can study biogeochemical and tectonomagmatic processes related to three phases in the evolution of an OCC:

1. Serpentinization processes associated with active fluid discharge at the LCHF and the influence of serpentinization on microbial communities in a range of environments, including carbonate sediments, alteration in both ultramafic and mafic rocks, and zones of subsurface fluid flow of various intensities.
2. Evolution of the massif and the effects of alteration processes on microbial activity as it was progressively denuded to the seafloor and rapidly cooled from around 1 Ma onward. This includes understanding the longevity of and possible precursors to the LCHF, determining the evolution of serpentinization with progressive denudation, and evaluating variations in microbial communities with seafloor age and as the dominant lithology changes from ultramafic to mafic in composition.
3. Early history of the detachment fault, which localized high strain deformation and fluid flow at 300°–400°C (Schroeder and John, 2004; Boschi et al., 2006; Karson et al., 2006; Escartín et al., 2003), possibly as deep as several kilometers below the seafloor.

Background

Active serpentinite-hosted hydrothermal systems and chemical exchange between the mantle, biosphere, and hydrosphere

Approximately 30,000 km or roughly 50% of the global mid-ocean ridges are spreading at rates <40 mm/y and extend from the Arctic Ocean, along the entire Mid-Atlantic Ridge (MAR), and into the southwest Indian Ocean. The recognition that ultramafic rocks are tectonically emplaced along major normal faults at these slow-spreading ridge environments has led to new considerations of the geophysical, geochemical, and biological consequences of serpentinization for the global marine system (Figure F1) (Cannat, 1993; Dick et al., 2003, 2008; Smith et al., 2006; Escartín et al., 2003). Serpentinization is associated with the uptake or release of many major and minor components, such as H₂O, Mg, Ca, Si, Cl, Li, B, C, and S, with important consequences for long-term global geochemical fluxes and biogeochemical cycles (Alt and Shanks, 1998, 2003, 2006; Früh-Green et al., 2004; Boschi et al., 2008; Delacour et al., 2008a, 2008b, 2008c). In addition, serpentinization reactions lead to the production of highly reduced fluids and result in high concentrations of H₂ and reduced C-species including methane, ethane, propane, and straight-chain hydrocarbons (Proskurowski et al., 2006, 2008; Konn et al., 2009; Holm and Charlou, 2001; Foustoukos and Seyfried, 2004). These reduced species are believed to form through Sabatier or Fischer-Tropsch type (FTT) reactions catalyzed by Fe-, Ni-, and Cr-bearing minerals and have important consequences for biological activity on and within the seafloor and for global carbon cycling (Kelley et al., 2005; Takai et al., 2004; Brazelton et al., 2006; Perner et al., 2007; Proskurowski et al., 2008; Kohn et al., 2009; Holm and Charlou, 2001).

To date, six sites along the MAR—the high-temperature Rainbow, Logatchev, Ashadze, and Nibelungen fields and the lower temperature Lost City and Saldanha hydrothermal fields—are known to be hosted in mafic and ultramafic basement rocks, and more are likely to be found. Studies of the Lost City system suggest that low- to moderate-temperature ultramafic-hosted hydrothermal systems are long lived and occur in the seafloor to 2 Ma (Ludwig et al., 2011; Früh-Green et al., 2003). Serpentinization reactions at less than

~200°C play a key role in the production of high-pH fluids, which control carbonate precipitation and have important consequences for the sequestration of CO₂ from seawater. Diffuse high-pH fluids also directly promote lithification of overlying sedimentary deposits (Früh-Green et al., 2003), which in turn affect heat flow and fluid circulation pathways. In contrast to basalt-hosted hydrothermal systems, where conceptual models of the fluid pathways, alteration reactions, and element uptake are relatively well constrained (Wheat and Fisher, 2008; Wheat et al., 2003; Fisher, 1998; Fisher and Becker, 2000), little is known of the fluid pathways and degree of heat and mass transfer that can support a subsurface biosphere in such moderate-temperature, serpentinite-hosted hydrothermal systems.

Impact of serpentinization on the subsurface biosphere

One goal of our planned drilling was to explore the subsurface environment and the potential for a hydrogen-based deep biosphere in an area undergoing active serpentinization. Lost City is characterized by extreme conditions never before seen in the deep marine environment. Carbonate-brucite structures are venting warm (temperatures up to 91°C), high-pH (9–11) hydrothermal fluids that are metal and CO₂ poor and have high concentrations of H₂ (up to 15 mmol/kg), CH₄ (1–2 mmol/kg), organic acids, and low molecular weight hydrocarbons (Kelley et al., 2005; Proskurowski et al., 2006, 2008; Konn et al., 2009). Formate and low molecular weight hydrocarbons are believed to be formed abiotically during serpentinization reactions at depth (Lang et al., 2010, 2012). Foustoukos and Seyfried (2004) indicate that even small amounts of Cr-bearing phases typical of ultramafic rock types can enhance the synthesis of short-chain alkanes, providing an abiotic mechanism for hydrocarbon production in ultramafic-hosted hydrothermal systems (McCollom and Seewald, 2001, 2003, 2006; McCollom, 2007). The production of H₂, abiotic hydrocarbons, and possibly formate during serpentinization reactions, along with mixing with oxidized seawater, provide metabolic energy for chemolithoautotrophic and heterotrophic organisms (McCollom, 2007; McCollom and Shock, 1997). Development of an ecosystem depends on the availability and renewal of a carbon source, electron donors (such as H₂, CH₄, H₂S, and Fe²⁺), and electron acceptors (particularly O₂, NO₃⁻, and SO₄²⁻). In ultramafic environments, electron donors are generally unlimited in the form of H₂ and CH₄, whereas electron acceptors depend greatly on the fate of sulfate (which is 1–4 mM in Lost City fluids) (Kelley et al., 2005) and on seawater recharge and mixing with serpentinizing fluids. Numerical models show that ultramafic-hosted systems may be capable of supplying about twice the metabolic energy as analogous deep-sea hydrothermal systems hosted in basaltic rocks (McCollom, 2007).

Considering the extent of ultramafic environments on the seafloor and the longevity of seawater circulation during serpentinization, the total biomass of the ultramafic-hosted subsurface biosphere may be substantial. Some researchers also propose that organic compounds produced abiotically in serpentinites may contribute to certain oil and gas reservoirs (Gold, 1979, 1999; Szatmari, 1989) and that similar reactions may have been the source of prebiotic organic compounds on early Earth (Holm and Andersson, 1998; Shock and Schulte, 1998; Sleep et al., 2004). Conditions of early Earth were likely similar to the hydrogen-rich anaerobic environment within the subsurface of Lost City, and the alkaline conditions are favorable for some aspects of prebiotic chemistry, such as formation of RNA-bearing vesicles (Russell, 2003). Despite the po-

tential importance of a subsurface hydrogen-based biosphere, it has not been well studied. Previous studies of ultramafic-hosted hydrothermal systems concentrated on active vent areas and their hydrothermal deposits (Schrenk et al., 2004; Takai et al., 2004; Nercessian et al., 2005; Brazelton et al., 2006, 2009, 2010; Perner et al., 2007; Brazelton and Baross, 2009). Because of the significant difference in volatile compositions and limited CO₂ stability at high pH, one can expect that biotopes hosted in serpentinizing environments will differ significantly from axial basaltic-hosted vent systems in which CO₂ is a dominant volatile species (Perner et al., 2007; Proskurowski et al., 2004, 2006, 2008; McCollom and Seewald, 2006; McCollom, 2007). In addition, the mixing of oxidized seawater with highly reduced fluids leads to complex 3-D gradients in fluid chemistry and temperature that may influence microbial distribution and activity. Substantially different habitats harboring various types of aerobic and anaerobic metabolisms may thus occur over a narrow spatial scale. However, essentially nothing is known from in situ studies of the nature and importance of microbial communities in serpentinizing basement rocks and in areas of diffuse flow or how these vary with lithology and seafloor age. In addition, little is known about the role microbes play in controlling fluid compositions and carbonate precipitation (Dupraz et al., 2009; Ehrlich, 2009).

Carbon budget of hydrothermal circulation

Large-amplitude anomalies exhibiting very low total dissolved manganese/methane ratios in the water column above fault-bounded peridotite bodies confirm that seawater-peridotite interactions generate extensive CH₄ plumes (Charlou et al., 1991, 1998; German et al., 2009; Bougault et al., 1993; Rona et al., 1992). Additional evidence that considerable volumes of hydrocarbons may be generated during serpentinization processes is provided by pore waters sampled during Ocean Drilling Program (ODP) Leg 125 at a serpentinized seamount in the Mariana fore arc, where high concentrations of CH₄ and C₂H₆ were measured (Haggerty, 1991; Mottl and Haggerty, 1989). These studies imply that a significant amount of carbon is transferred from the upper mantle to the hydrosphere through serpentinization processes.

Stable isotope and radiocarbon measurements on methane venting at Lost City demonstrate that methane is ultimately derived abiotically from mantle CO₂ as opposed to seawater bicarbonate (Proskurowski et al., 2008) and imply that seawater bicarbonate carried with recharge fluids is largely removed, presumably in carbonate minerals, before the abiotic reactions that form methane occur. This process is consistent with similar studies of CO₂ in high-temperature fluids from the Endeavour segment of the Juan de Fuca Ridge (Proskurowski et al., 2004) that indicate a magmatic source of carbon in hydrothermal fluids that were venting after a 1999 earthquake and require that a large fraction of seawater bicarbonate originally present in downwelling fluids is removed during hydrothermal circulation. Extraction of seawater bicarbonate during recharge processes at the LCHF is substantiated by stable isotope compositions of calcite veins in the basement rocks (Früh-Green et al., 2003) that point to a dominant seawater component in the fluids at the time of calcite precipitation. Thus, the calcite vein networks in the Atlantis Massif footwall indicate seawater recharge pathways during the lifetime of the system that provide local domains for mixing of oxidizing seawater and reduced hydrothermal fluids with important consequences for the existence of a deep biosphere. Because of the unique relationship between CO₂ and CH₄ in serpentinizing systems, understanding the controls on the produc-

tion and consumption of CO₂ and CH₄ is fundamental to understanding carbon biogeochemical cycles in these systems. At Lost City, significant quantities of CO₂ are also removed from seawater in forming the chimneys themselves. In addition, oceanic serpentinites may be a previously unrecognized reservoir of organic carbon, possibly originating from dissolved organic carbon in seawater (Delacour et al., 2008c). However, it is still uncertain whether there is net fixation of carbon from the hydrosphere into the solid Earth during these processes.

When considering global carbon budgets and the potential for CO₂ sequestration through carbonate precipitation in peridotites (Kelemen and Matter, 2008; Andreani et al., 2009; Boschi et al., 2009), it is important to constrain the source of carbon, the volume of carbonate, and the rate of precipitation in ultramafic-hosted hydrothermal systems and the longevity of hydrothermal circulation. In this system, there may be positive feedback in which high reaction rates are enhanced by exothermic heating during serpentinization where permeability and reactive surface area are maintained or enhanced by cracking in response to volume expansion (Kelemen and Matter, 2008). If so, quantifying carbonate precipitation during serpentinization has direct implications for evaluating the potential of in situ peridotites for CO₂ capture and storage. In the case of the LCHF, although we can constrain the current focused output of the system, we do not know the large-scale patterns of recharge and more diffuse discharge or the volume of carbonate veining in the footwall and have only a minimum estimate of the longevity of the system (Früh-Green et al., 2003; Ludwig et al., 2011). To evaluate how widespread Lost City-type intermediate-temperature systems are in slow-spreading environments and to what distance from the ridge axis seawater circulation and serpentinization persist, we need a better understanding of the controls on the location of the LCHF as well as spatial and temporal constraints on serpentinization and carbonate precipitation. Much remains to be understood about the necessary conditions (pressure, temperature, mineral reactions, and fluid fluxes) to form carbonate deposits and the controls on fluid circulation and its role in supporting a subsurface biosphere.

The evolution of hydrothermal circulation associated with detachment faulting

Another important question to address through drilling concerned the links between detachment faults, deformation, and hydrothermal circulation that feed high-temperature mid-ocean-ridge vent fields. Research on detachment faulting and OCCs indicates that this style of oceanic spreading is intimately linked to hydrothermal circulation and encompasses a wide variety of fluid flow and hydrothermal regimes (McCaig et al., 2007). High-temperature fluid circulation is well documented mineralogically and geochemically (Schroeder and John, 2004; Boschi et al., 2006; McCaig et al., 2010), and uplift along detachments may promote circulation and alteration within the footwall (Andreani et al., 2007). McCaig et al. (2007) propose temporal evolution in the style of hydrothermal circulation associated with the development of OCCs: from high-temperature systems hosted in the basaltic hanging wall within the rift valley (e.g., Trans-Atlantic Geotraverse [TAG]-type), to high-temperature ultramafic-hosted systems within the footwall (Rainbow-type), and ultimately to off-axis ultramafic-hosted systems within the footwall (Lost City-type). At Atlantis Massif we can study the first and third of these circulation types.

Recent estimates suggest that focused flow in large high-temperature hydrothermal fields may dominate the transfer of much of

the total heat from the ridges to the oceans in slow-spreading environments (German et al., 2009) and are therefore fundamental in the thermal evolution of our planet. Sampling at different locations along the former detachment fault will allow us to evaluate records of fluid-rock interaction and metasomatism and test the hypothesis that exhumation faults serve as long-lived permeable pathways for hydrothermal flow that can feed moderate- to high-temperature hydrothermal vents (McCaig et al., 2007). In ultramafic/mafic systems, assemblages of talc-tremolite-chlorite form at $>350^{\circ}\text{C}$ (Boschi et al., 2006, 2008; McCaig et al., 2010), typical of black smoker discharge zones, whereas serpentine-prehnite-hydrogarnet assemblages form at lower temperature vents (Frost et al., 2008; Bach and Klein, 2009). Spatially constrained sampling of the Atlantis Massif detachment system gives us an opportunity to map these variations in metamorphic assemblages, which in combination with geochemical and isotopic studies will help constrain temperatures and fluid-rock ratios (Delacour et al., 2008d).

Tectonomagmatic processes at asymmetric slow spreading ridges

OCCs are exposed in volcanic-poor areas where detachment faults remain active over periods of 1 to 3 My. These faults accommodate slip of up to 125 km (e.g., the Godzilla Mullion [Ohara et al., 2001, 2002]), implying that an extremely weak zone of localized strain is maintained for significant periods of time. The envisaged mechanisms controlling long-lived stretching of the lithosphere along oceanic detachment faults call for feedback with hydrothermal fluid flow along the fault and the growth of weak hydrous minerals (notably serpentine and talc) that favor localization of ongoing deformation (Escartín et al., 2008). This process involves a crack-seal mechanism associated with fluid circulation and mineral precipitation and could be a candidate for the generation of low-magnitude microseismicity.

Numerous recent geophysical and geological studies, as well as drilling at ODP and Integrated Ocean Drilling Program Sites 735B, 1275, and U1309 (Ildefonse et al., 2007; Dick et al., 2000; Kelemen et al., 2007; Expedition 304/305 Scientists, 2006) have changed our view of how slow-spreading ridges operate. Magmatic activity is locally relatively high, as evidenced by an abundance of gabbros/diabase exposed and drilled in these regions. (e.g., at Integrated Ocean Drilling Program Site U1309; Blackman, Ildefonse, John, Ohara, Miller, MacLeod, and the Expedition 304/305 Scientists, 2006). The unexpected abundance of gabbro hosted by mantle peridotite suggests that significant quantities of melt are generated beneath these volcanic-poor ridge segments, but much is trapped in the mantle as it turns into lithosphere beneath the ridge axis, rather than migrating upward to form a continuous magmatic crust (Figure F1). Ongoing magmatic activity associated with asymmetric normal faulting results in a heterogeneous mafic and ultramafic lithosphere with diabase intrusions exposed in the denuded footwall, whereas accretion of volcanic seafloor persists in the hanging wall (Cannat et al., 2006; Smith et al., 2006; Ildefonse et al., 2007; Karson et al., 2006). These results are consistent with recent numerical models that suggest about 50% of ridge extension must be accommodated by magmatic accretion to allow low-angle detachment faults to develop (Tucholke et al., 2008). This magmatic activity is probably essential to initiate and maintain large high-temperature hydrothermal systems (McCaig et al., 2007; Rona et al., 1993; Lalou et al., 1995; deMartin et al., 2007; Humphris and Cann, 2000; Cannat et al., 2004) and provides crucial feedback mechanisms between hydration-promoted melting, hydration, detachment faulting, and

mass transfer (Jöns et al., 2009; Escartín et al., 2008; Reinen et al., 1991; Moore and Rymer, 2007; Scruggs, 1997).

Understanding the links between faults in the brittle axial domain and deformation of the deeper ductile lithosphere is a key parameter for determining the mechanisms accommodating plate separation at mid-ocean ridges characterized by roughly equal partitioning of tectonic and magmatic spreading. Detachment faults are thought to initiate as high-angle normal faults extending $\sim 8\text{--}10$ km; hence, the exhumed footwall provides a cross section through the upper part of the lithosphere (Figure F1). We proposed to sample the exposed, and therefore inactive, section of the Atlantis Massif fault system. Rocks recovered from near the breakaway (western side of the massif) originated from shallow depths, and rocks from the easternmost side originated from depths of several kilometers. We did not plan to drill deep into the footwall, as this was achieved during Integrated Ocean Drilling Program Expedition 304/305.

Proposed drill sites Southern wall of Atlantis Massif

The southern wall of Atlantis Massif is cut by steep normal faults that, together with mass wasting, expose a cross section of the lithosphere along a near-vertical, 3800 m high scarp north of the Atlantis Fracture Zone (Figure F2). Extensive submersible and dredge sampling along this scarp recovered primarily serpentinized ultramafic rocks ($\sim 70\%$) with interspersed lenses of gabbroic rocks ($\sim 30\%$) (Kelley et al., 2005; Schroeder and John, 2004; Boschi et al., 2006; Karson et al., 2006; Blackman et al., 2002). These samples of peridotites are primarily depleted spinel harzburgites and are affected by variable but high degrees of serpentinization (in general 70%–100%). An approximately 100 m thick zone of heterogeneous deformation and metamorphic assemblages considered to represent the zone of detachment faulting (Karson et al., 2006) was previously mapped for at least 3 km along the crest of the Atlantis Massif southern wall in the vicinity of the LCHF. Within this zone, strain localization and focused fluid flow is marked by the presence of centimeter- to decimeter-thick domains of mylonitic serpentinized peridotites and metasomatic talc-rich and/or amphibole-chlorite-rich rocks that form shear zones with anastomosing to laminated foliations surrounding less deformed peridotites and gabbro (Schroeder and John, 2004; Boschi et al., 2006; Karson et al., 2006). Fresh high-temperature peridotite mylonites locally preserve unaltered olivine relics, which suggests an early high-temperature history of the fault zone (Schroeder and John, 2004; Boschi et al., 2006, 2008). These observations indicate that the detachment cannot be considered a single fault boundary between deformed and undeformed rocks but is rather a broad “damage” zone with localized high-strain deformation within a heterogeneous upper mantle section. Pelagic limestones and sedimentary breccias with basaltic and serpentinite clasts cover the zone of detachment faulting and form a nearly flat-lying sedimentary cap (Figure F3) believed to act as a barrier for heat and hydrothermal fluids (Kelley et al., 2005; Karson et al., 2006; Früh-Green et al., 2003; Schroeder et al., 2002).

Lost City hydrothermal field

The LCHF extends more than 400 m in length, with numerous active and inactive carbonate-brucite structures up to 60 m in height hosting dense microbial communities with limited phylogenetic diversity (Schrenk et al., 2004; Brazelton et al., 2006; Mehta and Baross, 2006). The high-temperature anoxic interior zones of the chimneys harbor biofilms dominated by a single phylotype of

archaea, referred to as Lost City Methanosarcinales, whereas bacteria phylogenetically related to CH_4 - and S-oxidizers are mostly found in the oxygenated outer walls of carbonate chimneys, where fluid chemistry is influenced by the ingress and mixing of seawater (Kelley et al., 2005; Schrenk et al., 2004; Brazelton et al., 2006; Lang et al., 2012).

Older nonventing sites are dominated by a single phylotype belonging to the ANME-1 clade of anaerobic methane-oxidizing archaea (Brazelton et al., 2006). Organic geochemical studies identified archaeal biomarkers in the chimneys that include isoprenoid hydrocarbons, glycerol diphytanyl diethers, and glycerol dibiphytanyl glycerol tetraethers (Bradley et al., 2009a, 2009b; Méhay et al., 2009, 2013) and bacterial biomarkers that include fatty acids, alcohols, hopanoids, and nonisoprenoidal diethers. The integration of genomic data (Brazelton et al., 2006, 2009, 2010; Brazelton and Baross, 2009) and compound-specific isotope characterization of the lipid biomarkers indicate variations in metabolism involving methanogenesis, methane and sulfur oxidation, and sulfate reduction over small scales during biofilm growth. Analyses of organic carbon in the hydrothermal deposits show that up to 50% of the microbial biomass is synthesized from this mantle carbon in areas where sulfate reduction is important (Lang et al., 2012). These studies imply that a significant amount of abiogenic carbon can be transferred from upper mantle domains to the biosphere and hydrosphere through serpentinization processes. A study utilizing next-generation sequencing technology shows that the archaeal and bacterial biofilm communities undergo dramatic changes as environmental conditions in Lost City chimneys change over time (Brazelton et al., 2010). Microorganisms that comprise a small fraction of the community in the hottest, youngest chimneys may be the dominant species in older chimneys with different mineralogy and fluid chemistry. This observation indicates that these species can remain in the rare biosphere for at least hundreds of years before they find themselves in conditions for which they were optimally adapted. Sampling the proposed Atlantis Massif transect may reveal dynamics of the rare biosphere operating on even longer timescales.

Fracture and fault networks in the basement below Lost City provide pathways for the fluids both vertically, forming the spire structures, and horizontally, forming carbonate growths parallel to the foliation in the serpentinites (Kelley et al., 2001, 2005; Ludwig et al., 2006). The nearly horizontal sheet-like style of flow is very different to the vertical conduits that typify black smoker environments (Kelley et al., 2005). Field mapping and observations indicate that fluid expulsion also occurs along steep fractures that extend into the carbonate cap sediments (Figure F3).

Central dome of Atlantis Massif

Expedition 304/305 targeted the central dome of Atlantis Massif. Drilling into the footwall was exceptionally successful in Hole U1309D (1656 m water depth), resulting in a stable 1415.5 m deep hole with very high average recovery (75%) (Expedition 304/305 Scientists, 2006; Expedition Scientific Party, 2005a, 2005b). However, the recovered lithology was unexpected: extremely limited proportions (<0.3%) of mantle peridotite but a predominance of gabbro (91.4%; mostly very primitive), ultramafic intrusive sequences (including troctolites; 5.7%), and diabase (3%). Drilling results suggest that the gabbro body is a discrete body hosted within a mantle protolith (Ildefonse et al., 2007; Expedition 304/305 Scientists, 2006). Drilling at Site U1309 was instrumental in overturning many predrilling hypotheses and has led to a need for revised para-

digms regarding processes of crustal accretion in these environments, particularly magma generation and distribution.

In general, Hole U1309D gabbros are remarkably undeformed. Evidence for talc-tremolite-chlorite schists, which mark the detachment fault on the southern wall, is confined to around 5 cm of intact core, clasts in fault breccia, and loose cobbles in several holes. The thickness of fault rocks cannot be more than 15 m, as gabbros occur within 20 m of the seafloor, suggesting significant thinning compared with the south wall. However, the fault zone may also be expressed by several zones of breccia within the upper 120 m of Holes U1309B and U1309D and by a deeper zone at around 700 meters below seafloor (mbsf) (Expedition 304/305 Scientists, 2006; Expedition Scientific Party 2005a, 2005b; Michibayashi et al., 2008). Detailed paleomagnetic studies on cores from Hole U1309D reoriented using borehole wall imagery demonstrate that the Atlantis Massif footwall has undergone a bulk tectonic rotation of at least $46^\circ \pm 6^\circ$ around a ridge-parallel (011° -trending) axis, consistent with a “rolling hinge” flexural unloading model for the detachment fault system (Morris et al., 2009). Together, these results challenge the commonly held hypothesis that the bulk rheology of slow-spreading lithosphere is primarily controlled by cooling of a simple thermal structure and instead suggest that strain localization favored by lithologic contrasts and hydrous alteration are also important, as well as perhaps highly heterogeneous cooling around large hydrothermal systems (Boschi et al., 2006; Karson et al., 2006; Escartin et al., 2003; McCaig et al., 2010).

Scientific objectives

The need for shallow drilling across Atlantis Massif

Our drilling strategy focused on obtaining good recovery of continuous sequences in the upper 50–80 mbsf, both along an east–west profile at the top of the Atlantis Massif southern wall (in the vicinity of the LCHF) and in a north–south profile toward the central dome (where the substrate is gabbroic). Currently, almost nothing is known about the existence of a serpentinite-hosted subsurface biosphere (in any setting, marine or terrestrial), let alone its variation. Drilling the east–west profile would allow a better understanding of the evolution of the detachment fault and how microbial communities evolve as ultramafic rocks are emplaced on the seafloor. Drilling the north–south profile would allow assessment of the role of gabbros versus serpentinized ultramafic rocks in supporting ecosystems and in localizing detachment faults.

Specific hypotheses that we proposed to test by drilling were as follows:

- An extensive subsurface hydrogen-based biosphere persists in serpentinizing lithosphere. These communities evolve and adapt to variations in diffuse fluid flow, fluid chemistry, heat flow distribution, and age of exposure on seafloor aging.
- Serpentinizing environments sustain higher biomass than gabbroic-dominated domains.
- Progressive denudation and seawater interaction with ultramafic- and mafic-dominated lithosphere lead to ultramafic-hosted hydrothermal systems that change from high-temperature, magmatically driven sulfide deposits to low-temperature hydrothermal carbonate deposits. Moderate- to low-temperature hydrothermal activity may last for hundreds of thousands of years, and the change to carbonate-dominated systems occurs

as soon as ultramafic rocks are exposed on the seafloor in the absence of active volcanism.

- The transition from sulfide- to carbonate-dominated environments can be detected by changes in the rare biosphere of the associated microbial communities.
- Zones of intense carbonate veining underlie sites of diffuse venting and represent seawater recharge and net sequestration of CO₂ from the hydrosphere into the lithosphere. These zones are biological hot spots where microbial communities are supported by the high fluxes of H₂ mixing with CO₂.
- Strain localization on detachments results from weak serpentine-, talc-, amphibole-, and chlorite-bearing assemblages concentrated into ultramafic rather than gabbroic rocks.

Constraining the deep biosphere in a serpentinizing environment

A major question to be addressed is whether serpentinization supports microbial communities in the basement rocks similar to those in the carbonate chimneys and fluids at the LCHF. The warmest, highest pH domains of carbonate chimneys are dominated by a single clade of Lost City Methanosarcinales archaea (Schrenk et al., 2004). Other organisms are apparently unable to succeed in the extreme (low ΣCO₂, high pH, and highly reducing) conditions of the serpentinizing fluids at temperatures approaching 100°C. Zones where CO₂ and electron acceptors such as oxygen, nitrate, and sulfate are provided by mixing ambient seawater with hydrothermal fluid harbor diverse bacteria including methane- and sulfur-oxidizing organisms.

Because fluid flow in the basement rocks is likely to be much more diffuse than the focused flow creating the Lost City chimneys, it is likely that these fluids will contain more CO₂ and electron acceptors mixed in from seawater and/or not yet reduced by serpentinization reactions. Therefore, we hypothesized that microbial communities in the underlying peridotites would show greater diversity than those in the main chimney complex. Also, because of the immense volume of Atlantis Massif expected to host hydrothermal circulation, the biomass of this subsurface community could potentially dwarf that of the Lost City chimneys. In particular, primary producers utilizing CO₂ from seawater and reduced species, such as H₂ from serpentinizing fluids, should flourish. Sulfate is likely to be an important electron acceptor in subsurface communities because sulfate concentrations remain high in Lost City fluids (1–4 mM) (Kelley et al., 2005). We expected that domains with sufficient concentrations of sulfate will host consortia of anaerobic methane oxidizing archaea and sulfate-reducing bacteria, as observed in gas hydrates and mud volcanoes (Orphan et al., 2001). Therefore, Atlantis Massif could potentially host extensive communities dominated by both methanogens and methanotrophs. Constraining the distribution and activity of these organisms is essential for understanding biological carbon cycling through slow-spreading ocean crust.

In addition to chemolithoautotrophs, heterotrophic organisms are expected to be present in the ultramafic subsurface, where they could be supported by organic compounds generated by serpentinization. Environmental DNA sequencing of Lost City fluids (Brazelton et al., 2006, 2009, 2010; Brazelton and Baross, 2009) and lipid biomarker analyses (Bradley et al., 2009a, 2009b; Méhay et al., 2009, 2013) reveal the presence of archaeal species that are absent in the carbonate chimneys. These include 16S rRNA gene sequences belonging to Thermococcales (Euryarchaeota phylum) and uncultured Crenarchaeota, which are surprisingly similar to those in

diffuse hydrothermal fluids of basalt-hosted hydrothermal systems (Brazelton et al., 2006). In such systems, the presence of these thermophilic archaea is indicative of an organic-rich, high-temperature subsurface biotope (Summit and Baross, 2001). Although their physiology is unknown, the Thermococcales representatives are most closely related to heterotrophs, implying a source of organics in the subsurface. The proposed drill cores would allow us to directly test whether heterotrophic communities are abundant within Atlantis Massif and whether their distribution is consistent with a community supported by serpentinization-derived organic compounds.

The proposed east–west transect would also provide an excellent opportunity to explore the rare biosphere (Brazelton et al., 2010) of subsurface communities inhabiting rocks differing in age by ~1 Ma. Virtually nothing is known about the biogeography of subsurface communities in oceanic crust. Our sampling scheme will shed light on important questions of whether microbial communities potentially adapted to magmatically driven, sulfide-dominated environments and are able to transition to serpentinizing, carbonate-dominated environments over a ~1 My timescale. Is there any overlap between the communities? At what point are the sulfide-adapted organisms succeeded by carbonate-adapted organisms? Are species in the westernmost, oldest rocks already present at very rare levels in the easternmost, youngest rocks, indicating that species can remain rare for up to 1 My before “blooming”?

Some microbiological results are available from Expedition 305 at Atlantis Massif to guide our efforts (Mason et al., 2010). Rocks were collected for molecular analyses from 400 to 1400 mbsf, and aerobic bacteria were cultured in variable lithologies (gabbro and olivine-bearing gabbro) with variable (10%–50%) alteration deeper than 1300 mbsf (temperature > 75°C). Mason et al. (2010) had no success culturing bacteria from the troctolites, and no archaea were found. The microorganisms cultured from the central dome are most similar to organisms known to degrade hydrocarbons and are distinct from those cultured from LCHF carbonates (Schrenk et al., 2004; Brazelton et al., 2006).

Importance of recovering carbonate cap sequences

Polymictic sedimentary breccias overlain by pelagic limestones or chalks form the 1–2 m thick, flat-lying carbonate cap that was previously mapped over a large portion of the top of Atlantis Massif (Figure F3) (Kelley et al., 2001, 2005; Blackman et al., 2002). The diffusely percolating high-pH fluids emanating from the underlying serpentinites locally promoted rapid sediment lithification and may provide an important niche for microbial activity kilometers away from areas of focused flow. Recovery of intact sedimentary sequences was not possible during Expedition 304/305, and this remained a priority attainable with our proposed drilling strategy.

At present, we have no constraints on the presence, diversity, and abundance of microbial communities in the sediments. The carbonate cap was thus an important target for drilling to evaluate its role in microbial activity in a carbonate-dominated environment, one in which the chemistry (with precursor sedimentary organic and inorganic carbon sources), porosity, and temperature structure is different than those of hydrothermal carbonate towers or in basement peridotites. This environment likely supports a more diverse microbial community that may be distinct from those in the basement, carbonate chimneys, and fissure fillings. The wide lateral extent of the carbonate cap has implications for the quantification of total chemical fluxes and the diversity of ecosystems that may be

supported by peridotite-hosted hydrothermal systems. If alkaline, CH_4 -, and H_2 -rich fluids are emitted diffusely over a broad region, the sedimentary cap rocks represent an important biological niche for communities living in diffuse fluid flow and expands the amount of biomass that may be supported by these systems. Drilling in the sedimentary cap rocks also offers an important opportunity to constrain the depositional, diagenetic, and alteration history of these sediments. Determination of the mineralogies and fossil and lithic assemblages, combined with O-isotope stratigraphy and radiocarbon age dating, can provide important information on the timing of microbial community shifts in relation to the evolution of detachment faulting, exhumation, and the initiation and episodicity of hydrothermal activity.

Detachment faulting and the evolution of oceanic core complexes

Our planned drilling aimed at obtaining good, continuous recovery of the talc-amphibole-chlorite schists, serpentinite mylonites, and variably altered peridotites and gabbros that comprise the zone of detachment faulting across and along isochrons. Drilling profiles into the damage zone would constrain thickness variations of the detachment fault zone, help us better understand how strain is localized at this tectonic boundary, and document discontinuities that may reflect removal by later faulting. By drilling east–west profiles along the southern wall and north–south profiles toward the central dome and using Integrated Ocean Drilling Program Hole U1309D as a tie point, we would be able to document spatial and temporal heterogeneity in rock type and therefore magmatic and tectonic accommodation to plate spreading and to assess the role of rheological contrasts between competent gabbro and weaker serpentinitized ultramafic rocks in localizing detachment faults. Drilling would ultimately allow a better understanding of the evolution of the massif as it was progressively uplifted to the seafloor and cooled. Although there are other OCCs where similar studies could be envisaged, Atlantis Massif is the only one currently known that also hosts a low/moderate-temperature hydrothermal system, allowing multiple objectives to be achieved within a single expedition. Thus, our study provides a unique opportunity to evaluate the extent and activity of the subsurface biosphere within a well-defined geological and geochemical context that is representative of processes that form a large proportion of the seafloor in slow-spreading ridge environments.

Alignment with the IODP Science Plan

Expedition 357 set out to drill a series of shallow (~50–80 m) holes across Atlantis Massif (30°N; MAR) in an effort to (1) recover in situ sequences of sediments, hydrothermal deposits/veins, and variably deformed metasomatic talc-amphibole-chlorite-rich rocks and serpentinitized peridotites along a spreading-parallel (east–west) profile at the top of the southern wall of Atlantis Massif and (2) obtain comparable in situ sequences along a ridge-parallel (north–south) profile on the Atlantis Massif central dome, where rock types are known to change from dominantly ultramafic to dominantly mafic.

Major scientific questions that we planned to address by drilling include the following:

- What is the nature of microbial communities hosted by serpentinitizing rocks, and to what depth is microbial activity sustained? How do these vary with aging of the lithosphere? How

do they differ from or interact with communities in sediments and mafic substrates in the same age crust?

- What are the consequences of serpentinitization processes for global (bio)geochemical cycles?
- What are the spatial scales of lithologic and hydrothermal variability in slow-spreading lithosphere and the implications for heat and fluid fluxes and microbial life?
- How are carbon-bearing phases distributed locally and regionally? What are the rates of carbon fixation, as biomass or solid carbonate, in ultramafic rocks during low-temperature hydrothermal activity? What is the role of serpentinitization in carbon sequestration?
- How do oceanic detachment faults develop and facilitate hydrothermal circulation? How do they affect the development of alteration patterns and the evolution of the deep biosphere in these environments?

Drilling Atlantis Massif provides an important opportunity to evaluate the extent and activity of the subsurface biosphere within a well-defined geological and geochemical context that is representative of processes that form a large proportion of the seafloor in slow-spreading ridge environments. The planned drilling specifically addresses fundamental questions identified in the IODP Science Plan (<https://www.iodp.org/science-plan-for-2013-2023>) regarding Biosphere Frontiers, Earth Connections, and Earth in Motion:

- What are the origin, composition, and global significance of deep seafloor communities?
- What are the limits of life in the seafloor?
- How are seafloor spreading and mantle melting linked to ocean crustal architecture?
- What are the mechanisms, magnitude, and history of chemical exchanges between the oceanic crust and seawater?
- How do fluids link seafloor tectonic, thermal, and biogeochemical processes?

The processes controlling fluid flow and a deep biosphere are intimately linked, and over the past years many studies have concentrated on understanding sedimentary or volcanic systems with high-temperature discharge or on areas of diffuse flow in volcanic units (D'Hondt et al., 2002, 2004; Shipboard Scientific Party, 2003; Expedition 301 Scientists, 2005; Nakagawa et al., 2006; Lipp et al., 2008; Parkes et al., 2005; Biddle et al., 2006; Hinrichs et al., 2006; Inagaki et al., 2006; Huber et al., 2002, 2003). In contrast, the spatial scale of lithologic variability between mafic and ultramafic seafloor at slow-spreading ridges, the implications for fluid flow paths and fluxes, and the subsurface ecosystems supported by these systems remain almost completely unconstrained. A major aim of drilling Atlantis Massif was to investigate the nature and distribution of microbial communities and their links with seawater infiltration and alteration processes in two distinct, lithologically heterogeneous domains of an OCC: (1) the serpentinitizing basement at varying distances both from the ridge axis and from the active, low-temperature hydrothermal field, the LCHF, and (2) a mafic, plutonic domain sampled from Hole U1309D that is less influenced by present-day hydrothermal activity and serpentinitization. Our objectives open new opportunities for the study of abiogenic production of organic compounds and their implications for prebiotic synthesis (Holm and Andersson, 1998; Shock and Schulte, 1998; Sleep et al., 2004) and will help constrain the subsurface scale and longevity of hydrothermal circulation and hence rates of carbon fixation. This

study has implications both for past climate change (Kelemen and Matter, 2008; Andreani et al., 2009; Boschi et al., 2009) and possible active sequestration of CO₂ in ultramafic rocks.

Operational strategy

Overview of offshore operational logistics

To achieve the expedition scientific objectives, seabed rock drill technology was chosen as the ideal method to recover high-quality shallow (50–70 m total length) cores from Atlantis Massif. To enable continuous operations, two seabed rock drills were chosen for this purpose: the Meeresboden-Bohrgerät (MeBo) 70 rock drill from the Center for Marine Environmental Sciences (MARUM; University of Bremen, Germany) and the British Geological Survey (BGS) RockDrill2 (RD2) (Figure F4). The *RRS James Cook* (Natural Environment Research Council [NERC], UK) was provided as an in-kind contribution as the drilling platform in support of the seabed rock drill operations.

This was the first time that seabed drill technology was used in the ocean drilling programs. Both drills are remotely operated systems that are lowered onto the seabed, with power and control maintained from the surface via an umbilical. The systems use multiple rods and core barrels to progressively penetrate into the seabed. They are both loosely based on an HQ-size coring system, producing between 61 and 62 mm diameter cores, similar in size to the standard IODP core diameter, while cutting a smaller diameter hole. By sitting on the seabed, they do not require heave compensation and consequently have good control on bit weight, analogous to land-based mining coring. Each system has the capacity to operate with either clear polycarbonate liners or stainless steel splits.

In support of the expedition's scientific objectives, several other tools were utilized in addition to the seabed drills:

- A drill-mounted water sensor + sampling package
- A drill-mounted tracer delivery system
- Drill rig–deployed borehole plugs
- Cableless logging tools
- A conductivity, temperature, and depth (CTD) rosette system on the *RRS James Cook*

Several of these tools were custom designed for this expedition. Details of these systems will be provided in more detail in the Expedition 357 methods chapter.

Mobilization of the vessel began on 16 October 2015 in Southampton, UK. The offshore science party joined the vessel on 24 October, and the *RRS James Cook* sailed on 26 October. The offshore phase ran for 47 days from 26 October to 11 December when the offshore science party disembarked the vessel and demobilization began. All European Consortium for Ocean Research Drilling (ECORD) Science Operator (ESO), BGS RD2, and MARUM MeBo staff cleared the vessel by 15 December.

In total, 16.4 days of Expedition 357 were spent operational on station, 19.5 days in transit, 4.7 days on standby because of weather, and 5.4 days on equipment-related downtime. See Table T1 for a summary of offshore operations and recovery. Shipboard-generated recovery plots are available on the ECORD Atlantis Massif Serpentinization and Life Expedition website under weekly summaries (<http://www.eso.ecord.org/expeditions/357/daily.php>).

Offshore operations

Based on seismic and bathymetric data acquired during previous research in the Atlantis Massif area, 11 drill sites were proposed

for investigation, encompassing an east–west transect and a north–south transect. All holes were sited within an area approved by the Environmental Protection and Safety Panel. The general locations of the sites cored are shown in Figure F2. Table T2 details the distances between the various holes and sites.

Prior to coring operations, a multibeam survey was conducted to accurately place the break of slope against two preexisting bathymetric data sets and the proponent-provided site locations. The *RRS James Cook* operates a Kongsberg Simrad EM120 deep-sea multibeam echo sounder. To improve resolution and analysis of slope angles at each drill site, the beam angle on the EM120 was decreased to 45°. A 50 m resolution surface was generated within Caris HIPS and SIPS to assess each location for slope prior to landing each rock drill. This was later supplemented by further multibeam surveys over Atlantis Massif, the Atlantis Fracture Zone, the MAR, and some of the conjugate margin when coring operations were suspended because of weather. The same swath settings were used as in the initial site survey.

Operations at each site followed a similar pattern. Before commencing drilling operations, a cast of the ship's CTD was run to capture a water column profile, in particular the bottom water character, prior to coring and any associated disturbance. Three Niskin bottles were fired at the bottom of the cast, two in the midwater column, and one near the surface. During drilling operations, real-time data streams from the drill-mounted sensors were monitored to track ephemeral events during penetration and operations. When suitable conditions enabled them, deployments of the cableless logging tools and/or borehole plug systems were attempted after drilling concluded. After recovery of the rock drills, water and core samples were immediately removed from the drills and brought into the laboratory for processing.

As with all mission-specific platform expeditions, no cores were split during the offshore phase; therefore, a comprehensive onshore phase complemented the offshore phase. Table T3 summarizes the descriptions and measurements made during Expedition 357 and indicates whether these were taken offshore or onshore. To prevent degradation of ephemeral samples during the offshore phase, selected whole-round cores were acquired for microbiology (see **Microbiology**), and core material and water samples were obtained for analyses of gases and geochemistry (see **Bulk rock geochemistry**). Offshore analyses for contamination were conducted on drill fluid samples taken during operations (see **Fluid chemistry and microbiology**). All microbiology and geochemistry samples acquired offshore for postexpedition research were shipped either directly back to the requestor's home laboratory or, for the pooled microbiology samples, directly to the Kochi Core Center (Japan) for later processing by members of the science party. All samples were shipped under controlled temperature conditions.

Onshore Science Party

The cores and geochemistry splits collected offshore were transported under refrigeration to the IODP Bremen Core Repository (BCR) at MARUM. Further analytical laboratories were accessed at MARUM (nondestructive core logging, marine geotechnics, and inorganic geochemistry) and the Department of Geosciences at the University of Bremen (paleomagnetism and the carbon/sulfur analysis system).

Prior to the Onshore Science Party (OSP), natural gamma radiation (NGR) measurements were conducted on all cores. In addition, continuous digital line scanning was conducted on each core through the liner, with four passes per core. After each pass, the

core was rotated 90°, resulting in a composite whole-core image (see **Physical properties**).

During the OSP (20 January–4 February 2016), the cores were described in detail and the IODP minimum and some standard measurements were made (Table T3). In addition, sampling for postexpedition scientific research was undertaken.

Summary of achievements

Expedition 357 was the first IODP expedition to utilize seabed rock drills to acquire subsurface core material. Although there were some technical challenges, as is to be expected when using subsea systems involving hydraulics, the method worked well, with recovery of coherent material from a wide range of lithologies and degrees of deformation. The total core recovered by the two seabed drills was 57 m after 109 m of total penetration, with an overall recovery of 53% at nine different sites. Two holes north of the LCHF were drilled to nearly 16.5 mbsf, with an average core recovery of 71%–75%. Such high recovery in shallow mantle sequences is nearly unprecedented in the history of ocean drilling. The cored sections were highly heterogeneous, ranging from moderately to highly altered and deformed serpentinitized peridotites with varying compositions and occurrences of talc-amphibole-schist zones and dolerites. Less abundant lithologies included lithified basalt breccias, rodingites, and metagabbros with cataclastic to (ultra)mylonitic deformation fabrics.

In addition to recovering lower crustal and upper mantle sequences of the Atlantis Massif detachment fault zone, advancements in seabed drill rig technology funded by the ECORD were achieved during Expedition 357. For the first time, four borehole plug systems were installed by the RD2 drill, two of which we consider to be well seated, whereas the condition of the other two borehole plugs are uncertain. These borehole plugs will enable future sampling of formation fluid from the boreholes to understand geochemical and microbiological processes in an actively serpentinitizing system. New sensor packages designed for the expedition were highly successful and consistently delivered real-time chemical information while drilling, allowing in situ confirmation of ephemeral events such as gas release during penetration. Finally, a new pump system was proven to deliver a geochemical tracer during drilling for reliable contamination tracer testing.

The European Petrophysics Consortium worked with both drill teams and the ANTARES company (ANTARES Datensysteme GmbH, Stuhr, Germany) to develop a suite of battery-powered logging tools that could be deployed cable-free downhole and stored in the tool rack of either drill system. Although we were unable to deploy these systems in the open hole during the expedition because of unsuitable hole conditions, this was another key technological development that enhances the operational capability of seabed rock drills for future expeditions.

Principal expedition results

Multibeam bathymetry

During Expedition 357, a multibeam bathymetry survey was conducted over Atlantis Massif, portions of the conjugate margin across the MAR, and along the Atlantis Fracture Zone to the south. The new bathymetry, after processing, provides a grid with a resolution of 20–50 m per pixel (Figures F5, F6), which is two to five times higher resolution than previously available bathymetry for this area

(100 m per pixel) (Blackman et al., 2002). The survey covers the entire striated detachment fault surface and surrounding terrain, including the ridge axis to the east, the Atlantis Fracture Zone to the south, the tectonized terrain off-axis and west of the detachment, and its gradual narrowing transition to the adjacent seafloor to the north (Figures F6, F7).

The striated detachment surface shows variations in geometry along-axis from south to north. Near the transform wall (south), the detachment fault surface summits near the LCHF at <800 meters below sea level (mbsl); from there it dips ~8° east toward the ridge axis, ~6° west (Figure F7), and ~8°–10° north toward the central dome. The detachment deepens to the north to >1500 mbsl. This deepening is associated with a change in shape; the detachment shows curvature along the spreading direction with slopes of up to 15° at its termination toward the ridge axis, becomes subhorizontal, and dips up to 10° away from the axis. Across-axis profiles at different locations along Atlantis Massif in Figure F8 show the position of the holes from Expedition 357 and the cored depth at Hole U1309D drilled during Expedition 304/305.

The hanging wall cutoff (termination) is well preserved toward the northern, deeper part of Atlantis Massif, corresponding to a sharp contact between the ridgeward-dipping striated fault plane and the adjacent seafloor volcanic terrain. This volcanic terrain has an ~5° to <10° tilt westward, away from the ridge axis, and hosts volcanic cones and a bathymetric texture typical of volcanic terrain along the rift valley floor (Figure F7). This portion of volcanic seafloor is bound further east by a fault scarp and corresponds to the top of a back tilted tectonic block, as previously identified (Blackman et al., 2002; Cann et al., 1997).

The termination is not preserved to the south, ridgeward of the elevated portion of the detachment. Instead, the striated surface is dissected by a major scarp, with a relief of up to 3000 m from the rift valley floor and the top of the scarp (Figures F6, F7). This scarp shows a lobate structure indicating mass-wasting processes (slumping). Laterally, it links north with the fault scarp bounding the tectonically uplifted volcanic seafloor.

The striated surface is also affected by extensive mass wasting along its southern boundary toward the transform valley (Figures F6, F7). The mass wasting produces scarps that are concave at their subvertical headwall. The transform wall south of Atlantis Massif has an average slope of ~20° and numerous channels bound by high ridges channeling debris that deposits at the base of the transform valley. Smaller scale mass wasting is also observed on steeper slopes of the detachment fault surface, defining the extension-parallel striations.

Late small-slip faults (centimeters to tens of meters) cut the striated detachment surface. Faults are subparallel to oblique to the ridge axis (Figure F7). Most have scarps facing away from the ridge axis, with scarps up to ~10–20 m in vertical relief. The scarps have gentle slopes (<20°), likely due to the limited resolution of the multi-beam bathymetry that cannot resolve these small-size scarps.

Lithology, alteration, and structure

Mantle to lithospheric processes

Cores from six sites across the southern wall of Atlantis Massif recovered a variety of ultramafic, mafic, and sedimentary rocks that exhibit a range of alteration styles and extent of alteration and deformation. Of the core recovered, serpentinitized harzburgites and serpentinitized dunites are predominant (44% by length); other major rock types include metadolerites and basaltic rocks (together 24%)

and schistose metasomatic rocks containing talc, amphibole, and/or chlorite (11%). Minor calcareous sedimentary units (8%) and gabbroic rocks (4%) were also recovered (Figure F9).

Serpentinized harzburgites and subordinate serpentinized dunites are typically undeformed and commonly exhibit protogranular textures but are extensively serpentinized. Serpentinized dunites are found exclusively as limited intervals alternating with harzburgite and likely represent relict mantle melt channels. Mantle melt-rock reaction textures including vermicular spinels, and orthopyroxene veins were also observed. Minor intervals of ultramafic rocks infiltrated by gabbroic melts are also present. A small volume of gabbroic plutonic rocks was recovered, but no long coherent sections of gabbroic core were observed. Dolerites intrude amphibole-rich fault rocks, locally with fractured chilled margins adjacent to these contacts. Poorly vesicular aphanitic to microcrystalline basalts are also present, typically within sedimentary breccias and commonly with glassy margins. Calcareous sands rich in foraminifers and with rare rounded lithic fragments of basalt are common in shallow cores.

The southern wall is characterized by distinctly heterogeneous, both laterally and vertically, distribution of ultramafic and mafic rocks and a strong degree of alteration (Figure F10). The rock types and proportion of gabbroic rocks recovered during Expedition 357 are distinctly different from the 1400 m long core of gabbroic rocks recovered during Expedition 304/305 at the central dome of the Atlantis Massif.

Lithostratigraphy

The lithostratigraphy is described in an east–west transect across the southern wall of Atlantis Massif, followed by the sites north of the southern wall, as illustrated in Figure F10.

Eastern sites

Site M0075. The upper sections of both holes at Site M0075 recovered surficial deposits of angular sedimentary basaltic breccias underlying carbonate sand, with Hole M0075B recovering underlying rubble and drilled fragments of metadolerite in addition to talc-amphibole-chlorite-rich intervals.

Site M0068. Site M0068 is structurally more complex than what was observed at other sites, and a variety of lithologies were recovered, including intervals of intact rock commonly bounded by deformed talc-amphibole schists and breccias. Intervals of serpentinized harzburgite are locally found with small gabbroic veins, and one interval appears to have been extensively impregnated by gabbroic melt. Some fresh olivine was also observed in the serpentinized harzburgite from this site. Metagabbro and gabbroic rocks are present in small intervals. Metagabbro and talc-tremolite schists were both observed to contain rare zircon in thin section. Most of the lower cores are composed of loose rubble of mixed composition. Structurally, this site is interpreted as a mass-wasting deposit with large boulders in places separated by intervals of finer rubble.

Central sites

Site M0069. Hole M0069A consisted of 10 cores that recovered serpentinized harzburgites, lesser serpentinized dunites, metagabbros, and metadolerites. The upper four cores of the hole contain carbonate sand, transitioning into a loose rubble unit dominated by angular fragments of serpentinized harzburgite (Section 5R-1, Unit 1; fragments to 4 cm). Coherent sections of serpentinized harzburgites (5% bastite after orthopyroxene) with observable mesh textures were observed below (Section 5R-1, Unit 2). A large portion of the

remaining cores is dominated by metadolerite (Sections 5R-1, Unit 3, through 9R-1, Unit 2) and rubble sections. Metadolerite is generally aphyric and microcrystalline to fine grained (typically 0.2–0.5 mm); some sections exhibit larger clinopyroxene (up to 1 mm) and disseminated sulfides (<1 mm). The lower sections of the hole (9R-1, Unit 3, through 10R-3) contain alternating serpentinized harzburgites and serpentinized dunites; harzburgites exhibit relict orthopyroxene (bastites; up to 10 mm and typically with a modal abundance of 10%–15%), and dunites typically contain chromian-spinel.

Site M0072. In contrast to many other sites, Site M0072 contains abundant mafic and metasomatic domains within the serpentinized peridotites. The upper sections of both holes consist of surficial features including carbonate sands (with centimeter-scale subrounded basaltic lithic fragments), sedimentary basaltic breccias, and basaltic rubble (with rare oxide gabbro fragments observed in Hole M0072B). Deeper intervals of the basement were drilled in Hole M0072B; below surficial units, rubble sections of mixed composition (metabasalt, metagabbro, and serpentinized harzburgite; Sections 3R-1 through 5R-1, Unit 1) overlie a principally continuous interval of alternating talc-amphibole schists, rodingites, and serpentinized harzburgites (Sections 5R-1, Unit 3, to bottom of hole in 8R-2).

Site M0076. The predominant igneous lithology of Site M0076 is serpentinized porphyroclastic harzburgite with lesser mafic lithologies. The upper sections of both holes are sedimentary basaltic breccias, which are stratigraphically better preserved in Hole M0076A (including the overlying fossiliferous carbonate sediment; Section 357-M0076B-1R-1 contains mostly rubble). Below this uppermost interval is a principally coherent sequence dominated by oxidized serpentinized harzburgites. The upper contact of this zone consists of talc-amphibole schists that enclose small sections of metagabbro and oxidized serpentinized harzburgite. This transition into coherent intervals of metagabbro and oxidized serpentinized harzburgite (bastite after orthopyroxene to 10 mm, typically at a modal abundance of 10%–15%; Section 357-M0076A-2R-1, Unit 3). Below sections of mixed rubble (including fragments of serpentinized harzburgite, serpentinized dunite, metagabbro, and talc-amphibole schists) with intervals of coherent serpentinites (Sections 3R-1 and 4R-1, Unit 1) are continuous sections of veined and altered alternating serpentinized harzburgites and serpentinized dunites (Section 4R-1, Unit 2 and below).

Western and northern sites

Site M0071. Site M0071 cores consist principally of serpentinized harzburgites and serpentinized dunites, with intervals of metagabbro and evidence for metagabbroic infiltration into ultramafic rocks. Rubble sections are common throughout, and the ultramafic lithologies stratigraphically overlie a drilled interval of metadolerite. Overall, the site appears to have been drilled through a large ultramafic-dominated boulder on top of the surface of Atlantis Massif.

Site M0070. The recovered lithologies are dominated by aphanitic to microcrystalline basalts that are typically poorly to sparsely vesicular and variably altered. Basaltic and doleritic fragments were exclusively observed within a variably cemented carbonate-matrix breccia. The material cored from this site is interpreted to be surficial sedimentary material (although this is likely to be locally derived); no coherent sequences of intact igneous rock were drilled. Occasional plagioclase-phyric basalt fragments and minor metadolerite were observed.

Site M0074. A single short core of fossiliferous carbonate sand was recovered.

Hydrothermal alteration of mantle-dominated lithosphere at Atlantis Massif

Alteration types

Within the recovered cores, five types of alteration were distinguished: serpentinization, talc-amphibole-chlorite metasomatism, rodingitization, oxidation, and one type classified as “other.” This “other” classification refers to hydration of gabbros, dolerites, and basaltic lithologies. Serpentinization is present throughout the sites and predominantly manifests as pervasive alteration with extensive to complete replacement of the primary mineralogy. Serpentinization is characterized by mesh textures after olivine, bastites after orthopyroxene, and serpentine veins. Talc-amphibole-chlorite metasomatism is evidenced by pale greenish white alteration with assemblages of variable proportions of talc, amphibole, and chlorite. It develops both as pervasive and localized alteration and encloses serpentinized harzburgite intervals on centimeter to decimeter scales. Talc-amphibole-chlorite metasomatism is found at the contacts with gabbros. Rodingitization is primarily restricted to Site M0072, where approximately five centimeter-sized intervals with pale brown to pinkish color occur adjacent to dark green regions of chlorite black walls and are repeatedly present over a few meters. Oxidation is characterized by reddish to brown serpentinized harzburgites and dunites. It occurs as both pervasive and localized alteration and is also associated with calcium carbonate veining. Hydration of dolerites and basalts manifests as pervasive background alteration with slight to moderate intensity accompanied by alteration halos that flank veins. Secondary minerals vary depending on the temperature of alteration, with dolerites dominated by greenschist facies minerals (chlorite and amphibole) and basalts by low-temperature oxidation to iron oxyhydroxides and clays. Hydration of gabbros is generally associated with chlorite-amphibole assemblages.

Alteration history

Serpentinization, talc-amphibole-chlorite metasomatism, and oxidation alteration types are always present at sites that recovered ultramafic lithologies. Of these three types, serpentinization is the most dominant and pervasive. Overprinting relationships are frequently observed and demonstrate an overall progression from serpentinization to talc-amphibole-chlorite metasomatism and later oxidation. Rodingites show exceptional relationships between rodingite, talc \pm amphibole-rich zones, and serpentinized harzburgites and form at the contacts between gabbroic veins/lenses and serpentinized harzburgites.

Hydrothermal veins are present within all lithologies, and compositions include serpentine, talc, chlorite, amphibole, epidote, quartz, and calcium carbonate. The veins are often complex, with multiple infillings and internal textures. Crosscutting relationships are complicated, with the same veins observed both crosscutting and being crosscut by a second vein. These observations indicate that the hydrothermal system does not show a simple evolution of the fluids. Calcium carbonate veins are not abundant across the massif and are surprisingly low in the sites around the LCHF.

Based on these observations, it is clear that hydrothermal alteration at Atlantis Massif is a highly dynamic system with complex relationships between the three dominant alteration types. The heterogeneity of the alteration and the hydrothermal veins provide

insight into the scales of the hydrothermal processes operating within the detachment fault zone.

Structures and deformation history

The drilled sites are located along a roughly spreading-parallel transect (west–east) in various positions (trough or wall/flank) relative to individual corrugations of the detachment fault over the southern wall of Atlantis Massif. Despite the fact that a number of the holes recovered rocks considered not to be in situ, generalizations can be made about the structural history recorded.

Rare magmatic fabrics characterized by diffuse but planar centimeter-scale banding/layering of igneous minerals in gabbroic rocks were recovered in Hole M0068. Where characterized, the majority of the recovered harzburgite preserves protogranular textures; only rare, low intensity, localized protoclastic serpentinized peridotites were recovered.

As in Hole U1309D, a minimal amount of recovered core has strongly deformed microstructures formed at high temperatures. The majority of the recovered cores show only greenschist-grade semibrittle and brittle deformation, commonly associated with doleritic intrusions. Fault rocks in shear zones are dominated by anastomosing intervals of variable intensity, with schistose amphibole \pm talc \pm chlorite zones up to tens of centimeters thick. Locally, schistose shear zones contain undeformed dolerite intrusions with preserved chilled margins; elsewhere, dolerite sheets record brittle and semibrittle deformation textures indicating repeated magmatism and faulting. Thin intervals of the schistose shear zones locally display intense cataclasis of other rock types reworked in the fault zone, with rare fine-grained intervals of cataclasis (possible fault gouge) recovered.

Bulk rock geochemistry

Rock samples were collected during the offshore and onshore phases for whole-rock geochemical measurements. Because of the decision to delay processing of these samples until work could be undertaken in a shore-based laboratory with appropriate equipment for ultramafic materials, these data were not available by the end of the onshore phase. Results will be reported in the *Proceedings* volume.

Fluid chemistry and microbiology

Inorganic, organic, and volatile fluid chemistry

An extensive water sampling program was conducted as part of the expedition to assess geochemical processes in the subsurface and connectivity to bottom water in the form of hydrothermal plumes. Sensor package Niskins were used to collect fluids flushed from the borehole (Table T4), and interstitial fluids in sediments were collected where available. An extensive CTD program collected near-bottom water (<3 m above seafloor) from each drill site prior to drilling to identify the undisturbed predrilling characteristics of the area (Table T5). Two casts collected background seawater for comparison in the Atlantis Fracture Zone and the MAR (described as Holes M0075X and M0075Z, respectively, in Table T5). A final cast collected samples from the middle of the hydrothermal plume above the western end of the LCHF by using the methane sensor to identify the appropriate water column depth (described as Hole M0072X in Table T5).

A total of 41 fluid samples were analyzed for shipboard salinity and ammonium, and 38 samples were analyzed for dissolved inorganic chemistry. These samples originated from the sensor package

Niskin bottles collected after drilling ($N = 14$), the CTD rosette Niskin bottles collected from bottom water prior to drilling ($N = 17$), and interstitial fluids from a few sediment cores collected during drilling ($N = 9$). With few exceptions, the chemical composition of these fluids is identical to seawater composition in terms of salinity, major cations and anions, trace elements (when above limits of detection), alkalinity, and pH, with the noted exception of a slight correlated deviation in sediment alkalinity, dissolved calcium, and the stable carbon isotopic composition of dissolved inorganic carbon in interstitial fluids from Hole M0069A sediments. There was no detectable sulfide or ammonia in any sample. A total of 56 and 70 water samples for hydrogen and methane analyses were collected from the shipboard CTD/rosette system and the drill rig sensor packages, respectively. Both methane and hydrogen range from below detection limit to nanomolar quantities. Typically, samples collected in the sensor package Niskins have significantly higher hydrogen concentrations than the bottom water collected prior to drilling. Hot spots of hydrogen were observed over Sites M0068–M0072; methane concentrations were highest over Site M0072 and were elevated at Sites M0069–M0071.

Microbiology

To accomplish the microbiology-related objectives of the expedition, an extensive program was carried out offshore to collect whole-round core samples immediately after core retrieval, curation, and scanning with the multisensor core logger to enable preservation of ephemeral microbiological properties. This included (1) frozen preservation of core material for DNA- and lipid-based analyses in shore-based laboratories, (2) establishment of enrichment incubations on the ship to assess the potential for various microbial metabolisms, (3) collection of samples to evaluate the performance of the tracer delivery, (4) preservation of samples for biomass determination via cell counting, and (5) collection of parallel samples for spatial and isotopic geochemical determination, particularly focused on carbon and minerals. In addition to whole-round core samples, the liner fluids bathing the cores and core barrels were also collected to assess for potential contamination of the samples. Bottom water samples prior to and before drilling were also collected for this purpose, as well as to examine the flux of subsurface components to the water column.

The execution of the sampling plan for microbiology and other ephemeral properties was highly successful, even given the technological constraints of adapting this methodology to the particulars of seabed drilling. Because of the nature of seabed drilling, individual cores wait on the seabed until all cores from a hole are recovered at once. During Expedition 357, cores remained on the seabed from 1.5–54 h prior to recovery on deck, with time on the seabed dependent on drilling speed, total depth of penetration, and position of the core within the hole. The offshore core flow plan was optimized for collecting whole-round cores for ephemeral properties as soon as possible, resulting in total handling times once cores were recovered on deck from 8 min (for the deepest core sections) to 7 h (for the shallower sections). In total, 42 whole-round core samples were taken from the 17 holes drilled during the expedition, totaling nearly 8 m in combined length and representing roughly 14% of the entire core recovered. From these samples, 29 different enrichment experiments were established on the ship, with initial indications of some positive activity in some of the treatments based on elevated cell counts.

Subsamples from these whole-round cores were immediately frozen at -80°C and then shipped to the Kochi Core Center, Japan. Exteriors of whole-round cores were then cut under sterile conditions with a band saw system equipped in a clean booth and subsampled for perfluoromethylcyclohexane (PFC) tracer checks (exterior), concentration and isotopic composition of total inorganic and total organic carbon, vein analysis, in situ organic carbon and Fe mineral analysis, and trapped-gas analysis. The interior portions of frozen samples were subsampled and distributed for shore-based DNA and RNA analyses, interior PFC tracers, and amino acid and lipid analyses.

To create initial assessments of microbial biomass in the core samples, cell abundance was determined offshore by direct counting with an epifluorescence microscope following cell separation from the sample matrix. Cell abundance was variable and relatively low, ranging from 10^2 – 10^4 cells per cubic centimeter in rock samples and higher abundances in sediment samples. To enable such low levels of cell detection, great care was taken on the ship to minimize dust contamination of samples during processing, resulting in minimum quantification limit of 48 cells/cm³.

A major technical development for this expedition was establishing a delivery system for adding a synthetic tracer (PFC) into the drilling fluids to monitor for the possibility of drilling-induced contamination. Samples of core barrel liner fluids, sensor package Niskin bottles, and exterior and interior pieces of whole-round core were collected to quantify the concentration of PFC tracer added during drilling operations and track its potential distribution into samples. After overcoming some technical difficulties with the metering pump in the delivery system, we established that PFC was delivered at saturating (>1 mg/L) concentrations into the drilling fluids. Moreover, appropriate handling conditions combined with coherent core samples resulted in the absence of tracer from the interior of core samples (whereas less coherent materials suffered potential contamination from intrusion of tracer). Tracer delivery was most successful while coring Holes M0068B, M0070A–M0070C, M0071C, M0075A, and M0075B.

Sensor package

There were 17 full deployments of the custom sensor package on the rock drills during Expedition 357. As described in [Offshore operations](#), each deployment included sensors for dissolved methane, dissolved oxygen, oxidation-reduction potential, conductivity, temperature, and pressure; deployments shallower than 1200 m water depth also contained a pH sensor. Data from these sensors were observable in real time during drilling operations. Significant excursions in methane during operations were observed in Holes M0070A, M0071A, M0072B, and M0076B, with visual observation of bubbles emanating from the boreholes during drilling at Holes M0070A and M0071A.

Borehole plugs

Two borehole plug systems were successfully installed by the RD2 drill (Holes M0072B and M0075B), with two other attempts made (Holes M0068B and M0071B) with unknown success. These borehole plug systems will enable future sampling of formation fluid from the boreholes to understand geochemical and microbiological processes in an actively serpentinizing system. In addition, equipment was left behind in three holes (Holes M0069A, M0071C, and

M0076B) after difficult drilling conditions; it may be possible to utilize this lost equipment for scientific purposes in the future.

Physical properties

Physical properties data were acquired from all cores recovered during Expedition 357. This includes measurements on whole-round cores (magnetic susceptibility, gamma density, electrical resistivity, NGR, and digital line scans through liners), split cores (high-resolution digital line scans and color reflectance spectrophotometry), and 21 subsamples (*P*-wave velocity and moisture and density) taken from a range of lithologies across the study sites.

A negative correlation between magnetic susceptibility and electrical resistivity is relatively standard across most of the rock cores, whereas those parameters are positively correlated in sediment units. This may be attributed to fluid controlling resistivity in the sediment cores where the magnetic susceptibility and resistivity are both low. In hard rock cores, low porosity combined with the high proportion of magnetically susceptible components results in resistivity being controlled by the solid phases rather than any fluid present.

Density measurements on whole cores are primarily influenced by the quality of the core, and intervals of rubble are echoed in the scatter of the data profiles. Using gamma density in tandem with magnetic susceptibility can aid identification of certain lithologic boundaries, indicated by stepwise changes in the two parameters. For example, an interval of talc-amphibole-chlorite schist in Hole M0068B in the eastern area is characterized by lower densities and magnetic susceptibilities than the overlying (gabbroic) and underlying (ultramafic) units. Similarly, at the boundary between serpentinite and metagabbro at the base of Hole M0071A, a sharp decrease in magnetic susceptibility and increase in gamma density was observed.

Magnetic susceptibility does change overall from area to area, with western area cores having the highest magnetic susceptibility (mean = 3591×10^{-5} SI) across the Atlantis Massif study site and northern area cores (dominated by sediment) having the lowest (mean = 157×10^{-5} SI). The central and eastern areas are more comparable, with mean magnetic susceptibilities of 1187×10^{-5} SI and 1280×10^{-5} SI, respectively. A lower abundance of talc from the western area holes may be indicative of higher magnetite content in the recovered cores, compared to more talc-rich lithologies to the east (see [Lithology, alteration, and structure](#)). This hypothesis is supported by X-ray diffraction measurements of bulk rock samples, which show significantly higher amounts of magnetite in the west than in the other areas.

NGR intensities are consistently low across all sites, which is reasonable given the lithologies cored. The corresponding in situ data sets from three of the holes (M0068B, M0071C, and M0076B; see [Downhole logging](#)) may facilitate depth matching cores and logs to position the cores closer to their original in situ depth below seafloor.

In terms of recorded color reflectance parameters, the mean lightness (L^*) of cores is relatively constant across all four study areas (from 39.49% [central] to 44.98% [northern]). Color opponent dimension parameters are more variable. Mean a^* is negative at all but the northern sites, where the orange-colored sediment recovered from Site M0074 skews the data to positive (red). Mean b^* is consistently positive (yellow) across the study areas. It is most positive in the northern (7.06) and central (3.03) areas because of the influence of the data from the sediment units at Site M0074 (northern) and Site M0069 (central).

Moisture and density analyses on samples reveal that the serpentinites form a discrete population with lower grain densities and slightly higher porosities compared to the schists, metadolerites, metagabbros, and gabbros (Figure [F11](#)). Calcareous sediment samples have similar grain densities to serpentinites but considerably higher porosities. It is difficult to comment on systematic changes in these parameters across Atlantis Massif because of the limited size of the data set.

Triaxial *P*-wave measurements were undertaken on all but the sediment minicore samples (Figure [F12](#)). Serpentinites yielded the widest range of *P*-wave velocities of the lithologies sampled, ranging from 4.46 to 7.62 km/s (values represent mean values of the triaxial measurements for each sample), with an overall mean of 5.94 km/s. The mafic rocks (metadolerites, metagabbros, and gabbros) have a narrower range of mean values, varying from 4.89 to 6.05 km/s with an overall mean of 5.48 km/s. Schists have similar velocities to mafic rocks, with mean values from 4.41 to 6.68 km/s and an overall mean of 5.26 km/s. No systematic changes in these velocities across the study areas were discerned based on this limited data set (18 samples). However, when relating the mean (*x*-, *y*-, *z*-direction) *P*-wave velocities to the corresponding porosity data, it is clear that the velocities are porosity controlled (Figure [F12](#)).

Downhole logging

During Expedition 357, ~35 m of through-pipe total gamma ray logging measurements were acquired across three holes (M0068B [eastern], M0076B [central], and M0071C [western]). Other petrophysical measurements (notably resistivity and magnetic susceptibility) in the open hole were not possible for a variety of reasons, including boreholes too shallow for logging, boreholes obstructed by stuck core barrels and bottom-hole assemblies, and technical issues with the seabed drills that prevented tool deployment (see [Offshore operations](#)).

The total gamma ray data acquired indicate extremely low intensities of NGR from the lithologies encountered during this expedition across the three areas. Some similarities with the complementary data sets taken on whole-round cores may facilitate depth-matching core data to the downhole logs. This correlation could provide a better estimate of the original in situ depth of the core material, especially in lower recovery holes.

Paleomagnetism

Magnetic susceptibility (k ; κ) and natural remanent magnetization (NRM) of 15 discrete cylinder samples (volume = 11 cm³) from the eastern, central, and western sites were measured during the OSP. Samples were taken from working halves and relatively oriented with respect to the top of the sampled cores. κ ranges from 0.00031 to 0.0778 SI units (Table [T6](#); Figure [F13](#)). The highest magnetic susceptibilities were displayed by a serpentinitized dunite with melt intrusion, and the lowest κ values were restricted to specimens of talc-amphibole-chlorite schist. Higher κ values were frequently associated with more mafic rocks with greater amounts of iron oxide minerals such as magnetite. A viscous NRM component in the vast majority of discrete paleomagnetic pilot samples was effectively randomized by the application of an alternating field of 5–20 mT to determine inclinations and declinations of all the discrete samples (Table [T6](#); Figure [F14](#)). Cores were not oriented with respect to an azimuth, and the relatively few sample points per core section limit the usefulness of the declination data. A distinct cluster of data points from the central sites varies a few degrees from the predictions of a geocentric axial dipole (GAD) model. Notably, all of the

samples from the eastern sites have shallow inclinations; these were all serpentinites. Additionally, several samples had positive inclinations; these were restricted to a metagabbro recovered from Hole M0071A.

Preliminary scientific assessment

The overarching objectives of Expedition 357 focused on

- Exploring the extent and activity of the subsurface biosphere in young ultramafic and mafic seafloor;
- Quantifying the role of serpentinization in driving hydrothermal systems, sustaining microbiological communities, and sequestration of carbon in ultramafic rocks;
- Assessing how abiotic and biotic processes change with aging of the lithosphere and variations in rock type; and
- Characterizing tectonomagmatic processes that lead to lithospheric heterogeneities and the evolution of hydrothermal activity associated with detachment faulting.

To achieve these objectives, we set out to drill an east–west, spreading-parallel transect across the southern wall of Atlantis Massif and a south–north, ridge-parallel transect into the center of the massif (Figure F2). The east–west profile would allow evaluation of how microbial communities evolve with variations in hydrothermal activity and age of emplacement on the seafloor and of the extent and evolution of carbonate precipitation in serpentinizing peridotites. The south–north profile would allow evaluation of the deep biosphere in varying lithologies and provide information on the role of differing rheologies of gabbros and serpentinized ultramafic rocks in localizing detachment faults.

To accomplish these operations, we developed a coring and sampling strategy based around the use of seabed rock drills—the first time that such systems have been used in the ocean drilling programs. This technology was chosen in the hopes of achieving high recovery of the carbonate cap sequences and intact contact and deformation sequences to 50 mbsf, which is generally difficult to achieve in hard rock with conventional ocean drilling technologies. The expedition plan also included several engineering developments to assess geochemical parameters during drilling; sample bottom water before and after coring; supply synthetic tracers during drilling for contamination assessment; gather downhole logs of electrical resistivity and magnetic susceptibility for assessing fractures, fluid flows, and extent of serpentinization; and seal boreholes to provide opportunities for future experiments, all of which were supported and funded by IODP through ECORD. Although not an objective of the expedition, we were serendipitously able to generate a high-resolution (20 m per pixel) multibeam bathymetry map across the entire Atlantis Massif and nearby fracture zone, MAR, and eastern conjugate (Figure F6), taking advantage of weather and operational downtime. This map will assist science party members in evaluating and interpreting tectonic and mass-wasting processes operating on Atlantis Massif.

Expedition 357 successfully drilled 13 holes along the east–west transect of the southern wall of Atlantis Massif, including 4 holes on the eastern section, 6 in the carbonate cap and basement immediately north of the LCHF, and 3 on the western edge (Figures F2, F10). We also collected core from 4 holes north of the southern wall. In total, we collected 57 m of core with 55% overall core recovery (ranging from 0% at one site to 71% at another site and with 100% recovery in some sections). Many lithologic contacts and structural features are preserved in the cores (Figure F10), even in

fractured units and shear intervals, which validates our choice of using seabed rock drills. Although penetration below 17 mbsf proved impossible to achieve during the expedition because of the challenges of drilling in highly fractured and altered hard rock, we were successful in recovering the target rock type of moderately to highly altered and deformed serpentinized peridotites, gabbros, and mafic extrusive and dike rocks.

Core descriptions, structural measurements, and evaluation of the multibeam data during the onshore phase of the expedition provided an overview of the lithologic variations along the southern wall of Atlantis Massif. The lithologies along the east–west profile are dominated by highly serpentinized harzburgite with lesser dunite, with gabbroic veins and lenses, and show variable degrees of talc-amphibole-chlorite metasomatism and local rodingitization. Cores from the central sites (M0069, M0072, and M0076) recovered in situ continuous sections that preserve intrusive contacts and sheared intervals. These cores provide a record of early magmatism in the shallow mantle, multiphased and continuous serpentinization and metasomatism, injections of dolerite melts, and recent basaltic volcanism.

Cores from the eastern and western sites recovered variably sized blocks of rubble and sedimentary units. The rubble blocks consist of serpentinized harzburgite and dunite, metagabbros, dolerites, metadolerites, and sedimentary units dominated by basaltic breccias. The lithologies, deformation, and alteration characteristics in the rubble blocks are consistent with observations in the in situ sequences at the central sites; however, they provide no information as to the orientation of structures or veins. Surprisingly, the cores we recovered had only minor amounts of carbonate veins and no evidence for extensive carbonation.

Despite not reaching the target depths, 42 whole-round core samples for detailed microbiological and geochemical analyses were collected. Shipboard determination of contamination tracer delivery enabled confirmation of appropriate sample handling procedures for these samples, which will aid all subsequent microbiological investigations that are part of the science party sampling plans, as well as verification of this new tracer delivery technology for seabed drill rigs. Shipboard investigation of biomass density in select samples revealed relatively low and variable cell densities in the samples, and enrichment experiments set up shipboard will continue to be monitored for growth and activity. Thus, we anticipate achieving many of the deep biosphere–related objectives of the expedition through continued scientific investigation over the coming years. In combination with the anticipated microbiological results, shore-based petrological, structural, and geochemical studies will allow us to achieve a number of our goals set out for the east–west transect.

Unfortunately, we were unsuccessful in completing the south–north operations planned for the expedition, which will limit our ability to satisfy objectives related to understanding detachment faults. Also, no open-hole logging operations could be conducted during the expedition due to challenging hole conditions and equipment failure. However, we were able to demonstrate the functionality of the new magnetic susceptibility logging tool, which could have future applications for oceanographic and industry research, and the Optical Acoustic Gamma tool was run through pipe in three holes, providing a complementary data set for the NGR measurements conducted prior to the OSP.

We were also successful in the application of other new technologies used in support of the expedition: (1) extensive use of a custom-designed in situ sensor package and water sampling system on

the seabed drills for evaluating real-time dissolved methane, oxygen, pH, oxidation-reduction potential, temperature, and conductivity during drilling; (2) deploying a borehole plug system for sealing seabed drill boreholes to allow access for future sampling; and (3) proving that contamination tracers can be delivered into drilling fluids on seabed drills. The sensor packages delivered valuable real-time data that provided important evidence that the ultramafic, and possibly volcanic, sequences are producing significant concentrations of hydrogen and methane during active serpentinization.

Offshore operations

Transit to Atlantis Massif

At 0950 h Universal Time Coordinated (UTC) on 26 October 2015, the Pilot joined the *RRS James Cook*. The vessel left the quay-side at Southampton at 1021 h, and the Pilot departed at 1141 h. The vessel continued on transit toward the Atlantis Massif sites, arriving at the first site at 1530 h local time (UTC – 2 h) on Thursday, 5 November. All times hereafter will be in local time unless otherwise stated.

Multibeam surveys and waiting on weather

Pre-existing bathymetric data sets included a more regional 100 m resolution grid and a detailed 2 m resolution grid of the Lost City. However, there was an apparent offset between the two, potentially due to using different geographic projections. Therefore, prior to commencing coring operations, it was necessary to run a multibeam survey over the proposed coring sites to evaluate the slope angles for both drills and accurately locate the break in slope at the southern edge of the Atlantis Massif complex.

On 5 November 2015, in proximity to Site M0068 at 30°7.49717'N, 42°5.74742'W, a sound velocity profile was conducted. The sonde was deployed at 1627 h and recovered to deck at 1741 h. As data were downloaded, the vessel moved to the start of the first multibeam survey line. In total, five north–south survey lines were run, starting at 1814 h and ending at 2208 h. This initial survey covered Sites M0068 (proposed Site AM-02A), M0069 (proposed Site AM-06A), M0071 (proposed Site AM-04A), M0072 (proposed Site AM-01A), and M0076 (proposed Site AM-11A). On 8 November, two multibeam lines were run in a northeast–southwest direction to survey the locations for Site M0070 (proposed Site AM-07A), and Site M0074 (proposed Site AM-09A). The survey commenced at 1027 h and was completed by 1145 h.

On 12 November at 0830 h the Master of the Vessel decided to cease drilling operations because of concerns regarding the weather (after effects of Hurricane Kate). However, multibeam and CTD operations were still possible, and we decided to prepare for possible coring at Sites M0073 (proposed Site AM-05A) and M0075 (proposed Site AM-03A) by running these activities in advance of any coring at these locations. The vessel departed Site M0072 at 0900 h following recovery of the RD2 to deck and transited to the start of the first multibeam line. The vessel initially ran three lines: east–west to cover proposed Site AM-05A, west–east covering Site M0075, and then continued east to cover an additional CTD cast taken over the MAR. This initial multibeam survey commenced at 0928 h and was completed by 1220 h on 12 November. Following completion of the CTD cast at the MAR (see below) and Site M0073, another multibeam survey was started at 1900 h on 12 November and ran until ~0800 h on 13 November, when a CTD was

conducted at Site M0074. This portion of the survey covered the western side of the Atlantis Massif complex.

Following the CTD cast at Site M0074 on 13 November, the vessel continued to be officially “waiting on weather” as far as drilling operations were concerned, so we continued running north–south multibeam lines across the Atlantis Massif complex. This started at 1150 h and continued until 2240 h when the weather became so bad that the survey had to be terminated so that the vessel could turn into the predominant weather direction and maintain a steady course, with winds from the southwest and 5 m swell from the northwest. The vessel maintained this course until the early hours of 14 November when operations began at Site M0075.

The vessel departed Site M0076 at 1900 h on 17 November. With both drills still undergoing repairs, we decided to continue the multibeam survey, concentrating on running east over the MAR and the conjugate margin to the Atlantis Massif complex. A total of five north–south lines were run starting at 1940 h on 17 November and ending at 0812 h on 18 November. The vessel then began to transit to Site M0071 to begin coring operations with the RD2.

Following deterioration of the weather conditions again and with the forecast not showing improvement, the vessel was put on “waiting on weather” status as far as coring operations were concerned on 19 November. The vessel departed Site M0071 at 1226 h on 19 November and transited toward the start of two multibeam lines planned to image the Atlantis Fracture Zone south of the Atlantis Massif complex. The survey commenced at 1315 h and ended at 2052 h.

By this point, the weather had deteriorated so much that the multibeam data were badly affected. The Master ordered the vessel onto a southwest course, heading 246° until further notice. The vessel spent the entire day of 20 November heading southwest and then south, trying to avoid the worst of the weather. On 21 November, we decided to turn the vessel back toward Atlantis Massif and track the bad weather north, aiming to arrive back on site in workable conditions. The vessel turned at 0500 h.

At 2229 h on 21 November, despite marginal conditions (swell > 4.8 m), the vessel slowed to ~5 kt to begin a multibeam line running back across the Atlantis Fracture Zone and toward the Atlantis Massif complex. The data quality was marginal. At 0027 h on 22 November, a new multibeam line was started running west to east along the foot of the massif complex to fill in some data gaps. However, the sea state was not conducive to running in this direction, causing the system to freeze and requiring restarting twice, with very poor data quality, and the line was terminated at 0243 h. We decided to move to the eastern conjugate margin and begin a south to north oriented line that would run with the swell. This third line started at 0348 h on 22 November and continued until 0600 h, when the vessel was turned toward Site M0070.

At 2013 h on 28 November, the vessel departed Site M0075 to recommence multibeam surveying while waiting on technical repairs to the RD2. The first line was the rerunning of a west to east line along the foot of Atlantis Massif because of the poor data quality acquired on 22 November. Following this run, the vessel moved to continue the north–south lines covering the eastern conjugate margin of Atlantis Massif. The survey commenced at 2215 h and ended at 0547 h on 29 November with the vessel transiting back to Site M0075 to restart coring operations.

At 1620 h on 30 November, the vessel departed from Site M0074 to begin further multibeam surveys over Atlantis Massif, the Atlantis Fracture Zone, and the eastern conjugate margin. Both seabed

drills were nonoperational with repairs not able to be undertaken at sea. The decision was therefore made to supplement the multibeam already acquired by continuing to survey the area, with one break for an additional CTD cast over Lost City, so as to best utilize the operational time remaining before commencing the transit back to Southampton, UK. The multibeam survey began at 1645 h on 30 November, broke off at 0815 h on 1 December for the CTD cast, restarted at 1734 h, and ran until 0200 h on 2 December, when the vessel began the transit.

Additional CTDs

In addition to conducting a CTD cast prior to beginning coring operations at every site, two additional CTDs were requested by off-shore science party members while waiting on weather and unable to continue with coring operations. These additional casts were intended to capture the geochemical signature away from the main Lost City site and proposed coring locations, as unexpected levels of gases had been captured during the baseline CTDs prior to coring.

On 12 November, a CTD cast over the Atlantis Fracture Zone was conducted between 1220 and 1529 h. The cast reached ~2 m off the seafloor, with the deepest samples collected from ~4135 m water depth. Two Niskin bottles were fired at depth, and then two each were fired at a midway point in the water column. No near-surface sample was collected from this site. This additional CTD site was linked to Site M0072 (the closest coring location) and given the prefix M0072X. See Tables T4 and T5 for details of all CTD casts and Niskin bottle depths. The vessel then began to transit to Site M0073 to conduct another precoring CTD cast.

On 14 November, a CTD cast over the MAR was conducted between 1229 and 1526 h. The cast reached ~2 m off the seafloor, with the deepest samples collected from ~4221 m water depth. In this instance, the usual sampling strategy was not followed, and two bottles were fired near the seafloor, a further two approximately 100 m above that, and the final two approximately 200 m above seafloor. This additional CTD site was linked to Site M0075 (the closest coring location) and given the prefix M0075X (Tables T4, T5). The vessel then began to transit toward Site M0070.

On 1 December, a CTD cast was conducted in close proximity to Lost City. The CTD commenced at 1548 h and was completed by 1725 h. The deepest samples were collected from 807.1 m water depth. Samples were collected at ~807, 802, and 797 m water depth, based on a methane spike observed in the data. No near-surface sample was collected from this site. This additional CTD site was linked to Site M0072 (the closest coring location) and given the prefix M0072Z (Tables T4, T5). The vessel then returned to running a multibeam survey over the western and northern edges of the Atlantis Massif area.

Site M0068

Hole M0068A

The vessel moved onto Site M0068 (proposed Site AM-02A) at 2208 h on 5 November 2015, with the site position centered over the RD2 port-side deployment position. The vessel settled into dynamic positioning (DP) mode. Prior to coring at each location, a CTD cast was conducted to quantify the background geochemistry and microbiology within the water column. The CTD was deployed at 2248 h and held at 10 m water depth for a full systems check. At 2332 h, the CTD was 1.6 m off the bottom, and the first three Niskin bottles were fired. Two further Niskin bottles were fired on the way

up, with a final one fired near the surface (Tables T4, T5). The CTD was recovered to deck at 0005 h on 6 November.

During the CTD cast, the RD2 was made ready for deployment. However, a communications problem with the CTD sensor mounted on the drill delayed launch. The RD2 was deployed at 0124 h; however, problems with the winch spooling mechanism and the methane sensor on the water sensor package meant the drill was recovered at 0146 h before landing on the seafloor. At 0234 h, the RD2 was launched again, landing on the seafloor at 0356 h after a full mid-water column systems check. Coring operations commenced at 0418 h.

The first core run was completed at 0602 h. However, a problem with the Arm Shift meant that the RD2 had to be recovered after a total penetration of 1.965 m. Prior to recovery, the Niskin bottles on the water sampling package were fired. The RD2 was on deck and secure by 0835. The vessel began to transit to Site M0069 at 0840 h on 6 November. Preparations began for deploying the MeBo.

One coring attempt was made in Hole M0068A to a maximum depth of 1.965 m with 23.9% recovery.

Hole M0068B

The vessel arrived on station at 1545 h on 23 November 2015. RD2 preparations continued until 1757 h, when the drill was deployed. At 1836 h, the RD2 was brought back on deck after a mid-water column systems check revealed two sensors inputs were wrongly connected. The RD2 returned to deck at 1848 h and was back in the water again by 1900 h. At 2012 h, the RD2 landed on the seafloor but had to reposition due to the angle of the drill. At 2031 h, the RD2 was settled on the seafloor, and coring operations began at 2051 h. The first four core runs were completed at 2250 h on 23 November and 0213, 0702, and 1158 h on 24 November. Following a problem with the LED light power supply, the tracer injection system was turned off from 0744 h to 1423 h on 24 November, covering the period of core Run 4. The fourth core barrel was stuck in the bottom-hole assembly (BHA), so the entire BHA was tripped and a new one was inserted with a G7 bit.

Difficulty was noted on reaming back down the hole, and coring had to start from 1 m above the base of the hole because it looked like the hole had partially collapsed. Core Run 5 started at 1452 h and was completed by 1605 h. At 1800 h a hydraulic oil leak from the top drive was noted. At the rate of loss, there was approximately 20 h coring time left before logging and installing the packer would have to take place. Core Runs 6 and 7 were recovered at 1908 h and 2340 h, respectively. Core Run 7 did not achieve full penetration. Core Run 8 began at 0037 h on 25 November, but by 0618 h little progress (~70 cm) had been made, so the barrel was tripped and the hole conditioned and reamed. Barrel 9 was then loaded. However, after a discussion about the hole conditions, we decided to abandon the hole and attempt logging and installation of the packer.

During this discussion, it was noted that the flush was variable with difficulties maintaining the flush pressure and flow; following the decision, it was found that the barrel was stuck in the BHA. At 1023 h the optical acoustic gamma (OAG) logging tool was deployed, conducting two through-pipe upward logging passes. This was completed by 1122 h. The magnetic susceptibility tool was then deployed (at 1155 h) through the pipe as an operational test for deployment, triggering, and recovery, as this had not been done so far on the expedition. The test was successfully completed by 1211 h. At 1218 h, tripping of the rods commenced.

Installation of the downhole packer commenced at 1305 h and was completed by 1343 h. As the RD2 lifted off the seafloor at 1350 h, the rig tilted and caught the top of the plug with the breakout table. It is unknown whether the plug was fully or partially pulled out of the borehole. The RD2 was recovered to deck and secured by 1434 h on 25 November and the vessel immediately began to transit toward Site M0071.

Nine coring attempts were made in Hole M0068B to a maximum depth of 9.6 m with 66.04% recovery.

Site M0069

Hole M0069A

The vessel arrived on station at Site M0069 (proposed Site AM-06A) and settled into DP mode at 0915 h on 6 November 2015. The CTD was deployed at 0922 h. At 1006 the CTD was 1.7 m off the bottom, and the first three Niskin bottles were fired. Two further Niskin bottles were fired on the way up, with a final one near the surface (Tables T4, T5). The CTD was recovered on deck at 1038 h on 6 November.

At 1201 h, MeBo drill deployment began. A full systems check was performed at 100 m water depth at 1304 h, but at 1337 h we found a hydraulic leak on the umbilical winch. After investigation, the deployment was continued, but after further leaking from the umbilical winch, the dive was aborted at 1425 h and the MeBo was recovered on deck and was secure by 1530 h. The RD2 was made ready for deployment because the predicted weather would put the swell outside the operational range for launching the MeBo.

At 2002 h the RD2 was deployed, stopping for a full systems check at 300 m water depth. At 2111 h, the bridge asked for the RD2 to be stopped while they checked out a problem with GPS2. The RD2 held ~40 m off seafloor for 30 min before continuing down to the seafloor. Coring operations commenced at 2204 h. Coring continued steadily for 10 core runs, with core runs completed at 2218 h on 6 November; 0057, 0510, 0726, 1113, 1413, 1705, 1921, and 2205 h on 7 November; and 0249 h on 8 November. Core Run 11 commenced at 0448 h. However, a technical problem with the gate valve resulted in the reduction of flushing down the borehole. The drill rods became stuck, and the drill string, BHA, bit, and core Barrel 11 were lost in the hole after attempts to free the rods were unsuccessful. The RD2 was recovered on deck by 0800 h on 8 November.

During recovery, the Niskin bottles on the drill were not fired, so a ship's CTD cast was conducted over the drill site. The CTD was deployed at 0853 h. At 0933 h, the CTD was 2.1 m off the bottom, and four Niskin bottles were fired. No other bottles were fired mid-water column or near surface, and the CTD was recovered on deck at 0955 h (Tables T4, T5). The vessel departed station immediately on recovery of the CTD on deck.

Ten coring attempts were made in Hole M0069A to a maximum depth of 16.44 m with 74.76% recovery.

Site M0070

Hole M0070A

The vessel was on station at Site M0070 (proposed Site AM-07A) at 1212 h on 8 November 2015 and settled into DP mode following a short multibeam survey over the area. The CTD was deployed at 1212 h. At 1259 h, the CTD was 1.7 m off the bottom, and the first three Niskin bottles were fired. Two further Niskin bottles were fired on the way up, with a final one near the surface (Tables T4, T5). The CTD was recovered on deck at 1334 h on 8 November. The vessel position was adjusted so that the DP center was located over the stern deployment position for the MeBo drill.

The MeBo was deployed at 1405 h, and by 1604 h the drill was on the seafloor after mid-water column systems checks. The rig was leveled to ensure the overshot was central over the breakout table, and at 1748 h coring operations commenced. At 2148 h and with 1.7 m of penetration, rotation of the drill rod stopped due to "sticky" conditions. The BHA was recovered and a new BHA put down the hole, changing from a surface set to a G4 bit. At 2040 h, numerous bubbles were observed on the camera feed from the MeBo drill. The MeBo stopped coring and the bubbles appeared to stop, accompanied by a kick in the water sensor package readings. The MeBo started coring again at 2050 h, continuing until 0228 h on 8 November, when the overshot wire snapped while trying to recover core Run 3. The RD2 was put on standby and made ready for deployment. The MeBo was recovered on deck by 0506 h, and an assessment was made of the repairs required (overshot wire and a transformer problem on the HV unit). The vessel departed the site at 1000 h on 9 November.

Three coring attempts were made in Hole M0070A to a maximum depth of 4 m with 52.25% recovery.

Hole M0070B

After conducting a deep-water CTD cast over the MAR, the sea state calmed enough to deploy the RD2. The vessel transited to Site M0070, arriving and settling into DP mode by 1640 h on 14 November 2015. The all clear was given from the bridge at 1710 h, and the RD2 was deployed at 1747 h, landing on the seafloor at 1852 h. Coring started at 1910 h, but the BHA stalled at 1921 h. At 2039 h, the RD2 lost all communications with the drill. The MeBo started pre-dive checks in case the RD2 had to be recovered. At 2053 h, after attempts to restart communications, the RD2 had to be recovered, initially with the BHA protruding from the bottom of the drill. At 467 m water depth at 2117 h, communications came back online and the BHA could be retracted for a normal recovery. The RD2 was on deck and secure by 2150 h on 14 November. The vessel was given clearance to begin the transit to Site M0073 for a MeBo deployment.

One coring attempt was made in Hole M0070B to a maximum depth of 1.3 m with 29.23% recovery.

Hole M0070C

The vessel arrived on station at 0720 h on 22 November 2015 after stopping a multibeam survey of the eastern conjugate margin when bad weather conditions began to decrease. Because of swell from three directions, it took a while to find the best heading, so no operations were allowed until 0818 h. At this time, the RD2 was launched for a wet test and was recovered on deck at 0900 h. There were still issues with the RD2 gate valve, and weather conditions were still considered marginal for deployment of either drill, so the vessel maintained position waiting on weather.

The sea state and swell slowly came down, and at 1546 h the Master of the Vessel gave permission for operations to start with MeBo deployment. The MeBo was in the water at 1659 h and on the seafloor by 1835 h. Coring started at 1916 h. Penetration slowed at 1.17 m, and the decision was made to take out the BHA (surface set bit) and replace with a new BHA (G4) and second core barrel. This process was completed by 2056 h with the start of core Run 2. At 0230 h on 23 November, the MeBo penetrated 5.2 m with the third core barrel. However, there were problems in getting core Barrel 4 into the BHA, and after multiple attempts, we decided to remove this BHA and replace it with the third one carried on the magazines. Because of broken magazine retainers it was not possible to remove

the third BHA from the magazine, so the second BHA was reinserted into the borehole in an attempt to ream back into the hole to log and install a packer. Reentry proved difficult, and the onboard cameras indicated that the hole was blocked near the surface. After 1 m of reaming the hole was aborted, neither logging nor packer insertion was attempted. On recovery, we noted that the shoe, liner, and core had been left inside the second BHA when the third core barrel was removed as part of normal operations. It is not understood how this happened, but it was this that caused the initial problems with inserting Barrel 4. Additionally, although triggered, the Niskin bottles had failed to fire.

The MeBo was recovered on deck by 1511 h, and the vessel began to transit to Site M0068 for an RD2 deployment while the MeBo underwent repairs.

Three coring attempts were made in Hole M0070C to a maximum depth of 5.21 m with 42.42% recovery.

Site M0071

Hole M0071A

At 1000 h on 9 November 2015, following discussion with the Co-Chief Scientist on shift, the vessel departed Site M0070 and transited to Site M0071 (proposed Site AM-04A), arriving on station under DP by 1125 h. The initial plan was to deploy the MeBo, but at 1340 h, because of a hydraulic leak, the plan altered to a RD2 deployment, with the RD2 made ready by 1500 h. By 1400 h, the MeBo leak was repaired, however, and the plan reverted back to a MeBo deployment.

At 1400 h, a CTD cast was begun. At 1446 h, the CTD was 2.2 m off the bottom, and the first three Niskin bottles were fired. Two further Niskin bottles were fired on the way up, with a final one near the surface (Tables T4, T5). The CTD was recovered on deck by 1525 h.

The MeBo was deployed at 1700 h, landing on the seafloor at 1924 h after a mid-water column systems check. The slope was 19°, so the drill had to reposition. It lifted off the seafloor and the vessel moved ahead 10 m. At 2017 h, the MeBo was again on the seafloor, and coring started at 2050 h on 9 November. Two core runs were completed at 0140 h and 0230 h on 10 November. However, on recovering the barrel from core Run 2, the overshot wire snapped and the hole had to be aborted. The MeBo was recovered on deck by 0531 h following a technical issue with the winch slowing recovery, and repairs were started. The RD2 was made ready for deployment. The vessel departed the station at 0532 h.

Two coring attempts were made in Hole M0071A to a maximum depth of 5.22 m with 54.6% recovery.

Hole M0071B

The vessel arrived on station and settled into DP mode at 0952 h on 18 November 2015. Following completion of pre-dive checks, the RD2 was deployed at 1117 h. However, a sensor failure on the tool arm during a mid-water column systems checks meant the drill had to be recovered, landing on deck at 1310 h. As repairs were still ongoing with the MeBo, the vessel stayed on station until the RD2 could be relaunched at this site.

The RD2 was deployed again at 1530 h and landed on the seafloor at 1634 h. After repositioning once because of the slope angle caused by landing on cobbles/boulders, coring commenced at 1720 h. At 2025 h, the tracer pump for the PFC tracer injection was turned off. The power supply was shared with one of the cameras, and interference was increasing and the cameras were dropping out. At 2027 h, when delatching the core barrel from Run 1, the barrel

was dropped; the slope angle caused the barrel to swing away from the tool arm and fall against the rig. The barrel was recovered and stowed safely by 2147 h. The second core run was completed by 0011 h on 19 November, but latching and delatching core barrels was still problematic because of the angle of the rig. It was therefore decided to deploy core Barrel 3, ream out and lift the BHA out of the hole, level the rig, and then ream back into the base of the hole before recommencing coring. This process was completed by 0254 h. At 0709 h, the RD2 began suffering hydraulic problems, with a small leak, and intermittent control issues. The Niskin bottles were fired, but because of a blocked gate valve, it was not possible to log.

The top plug was connected to the packer section and inserted into the borehole; however, the stop ring ended up 150 mm above the breakout table. The “J” connector was disconnected from the top plug at 1014 h, and the RD2 was lifted off the seafloor at 1030 h. However, the stop ring caught on the breakout table as the RD2 came off the seafloor, pulling the plug out of the borehole. The RD2 was recovered to deck by 1156 h in increasingly rough weather. One leg would not retract because of hydraulic problems, so one of the Launch and Recovery System (LARS) base plates was removed to set the drill level on the vessel. Coring operations were put on “waiting on weather” status, and the vessel left the site at 1226 h on 19 November to begin running multibeam surveys.

Three coring attempts were made in Hole M0071B to a maximum depth of 4.3 m with 53.6% recovery.

Hole M0071C

The vessel arrived on station at 1515 h on 25 November 2015 having completed operations in Hole M0068B. MeBo deployment began at 1529 h with the drill on the seafloor in a stable position at 1723 h. Coring operations commenced at 1802 h with a slight pause in operations between 1808 and 1810 h because the BHA looked bent. The first core run was completed at 2015 h. At 2115 h, a full reboot of the MeBo was performed, causing disruption to the sensor package data stream. This stream was restarted at 2128 h. Coring continued throughout 26 November with core Runs 2–5 recovered at 0425, 1047, 1620, and 2105 h. However, an issue developed with the sensor logger because of the systems reboot performed on 25 November. The package lost connection to external power until 0400 h on 27 November, coinciding with core Run 2. Following this run, the sensor logger remained stable.

Core Run 6 was completed on 27 November at 0800 h after difficult drilling conditions and very slow penetration. Core Barrel 7 was deployed and reaming back to the base of the hole commenced, but again progress was very slow. At 1140 h, we decided to trip the drill rods and change to a new BHA. On recovery (1315 h), we discovered that Barrel 7 was not latched into the BHA. A new BHA with a G4 bit was deployed at 1330 h. Core Run 8 was effectively reaming back down to the base of the hole. There were problems with hole stability and high torque, and the barrel was recovered at 1915 h. Core Barrel 9 was deployed at 1937 h, and reaming continued from 9.67 mbsf to the base of the original hole at 11.77 mbsf (core Run 6). Core Run 9 then continued 38 cm to 12.15 mbsf before recovery was attempted at 2225 h. However, the barrel was initially stuck in the BHA, only becoming free at 2345 h after numerous attempts to recover it with the overshot.

At 2355 h on 27 November, we decided to abandon the hole and begin logging operations and installation of a downhole plug because of concerns over hole stability and slow progress. Two in-pipe runs were completed with the spectral gamma sonde by 0151 h, and the dual induction tool (DIL) was then picked up from the maga-

zine. However, the top drive suffered a hydraulic failure, and the upper chuck would not open. This failure not only prevented deployment of the DIL but also recovery of the drill rods and BHA. At 0340 h on November 28, the MeBo was lifted off the seafloor, on deck and secure by 0525 h. After removal of the Niskin bottles, the vessel departed from the site at 0536 h on transit toward Site M0075.

Nine coring attempts were made in Hole M0071C to a maximum depth of 12.15 m with 36.87% recovery.

Site M0072

Hole M0072A

At 0532 h on 10 November 2015, the vessel began the transit to Site M0072 (proposed Site AM-01A) from Site M0071. By 0610 h, the vessel was on DP mode and the CTD was prepared for deployment. By 0723 h, the CTD cast was complete, having reached ~1.8 m off the seafloor. Three Niskin bottles were fired near the seafloor, two mid-water column, and one near the surface (Tables T4, T5).

By 0736 h, the ship was settled into DP mode, centered over the port-side deployment position for the RD2, and the drill was being made ready for launch. The RD2 was deployed at 1010 h. At 1045 h, following mid-water column checks, it was discovered that the onboard CTD sensor package had not been started. It was possible to do this remotely, however, so the deployment continued and at 1114 h the drill was positioned on the seafloor. Coring operations commenced at 1129 h, with the first core run completed by 1252 h. The second core run commenced at 1418 h. However, this run was aborted at 1438 h after consultation with the Co-Chief Scientists when it was discovered that a packer had not been loaded onto the drill. The RD2 was recovered to deck by 1535 h. The two core barrels were unloaded, and the drill was readied for redeployment.

Two coring attempts were made in Hole M0072A to a maximum depth of 2.225 m with 39.1% recovery.

Hole M0072B

At 1642 h on 10 November 2015, the RD2 was deployed in Hole M0072B. The drill was on the seafloor at 1708 h, and coring commenced at 1717 h. Hole M0072A was visible ~1 m away under the skid of the RD2. The first three core runs were completed at 1815, 2053, and 2319 h. On recovery, however, the third barrel was found to be stuck in the BHA. After flushing and rotating the drill rods, the barrel was still stuck. The rod and BHA were tripped with the barrel still inside, and a new BHA was deployed at 0229 h on 11 November. After discussion, we decided to ream back down to the depth reached by Run three (5.1 m) and then open-hole past the problem area (believed to be caused by talc) and recommence coring at 6 m. During this process, a sharp increase in torque was observed at the depth where the third barrel had become stuck.

Coring continued throughout 11 November with high torque again observed at 8.93 m, resulting in a short core run of only 1.28 m. The barrel of core Run 7 became stuck at 8.98 m but was recovered after flushing. At 0411 h on 12 November, it was noted that the umbilical had become twisted, possibly due to the influence of an increasing sea swell, causing disruption to the controls to the hydraulic systems and the onboard cameras. It was requested that the vessel move under DP, spinning about the drill position in an attempt to untwist the umbilical. It was initially believed that this had been successful, and the RD2 maintained position for 30 min to ensure communications were stable. However, communications were again lost, and the decision was made to recover the RD2 at 0535 h. It was not deemed safe to log the hole with unstable communica-

tions to the subsea drill controller, but the Niskin bottles were fired at 0740 h and the packer was installed by 0805 h. By 0900 h, the RD2 was on deck and secure. The umbilical was damaged and needed re-termination, requiring at least 12 h.

At 0830 h the Master of the Vessel decided that the sea state was becoming excessive for deployment of either drill, so at 0900 h the vessel departed the site to continue a multibeam survey across Sites M0070 and M0074.

Eight coring attempts were made in Hole M0072B to a maximum depth of 12.428 m with 52.22% recovery.

Site M0073

Hole M0073A

The vessel first arrived on Site M0073 (proposed Site AM-05A), at 1640 h on 12 November 2015 to conduct a CTD in advance of coring. Drilling operations were on standby due to weather. The CTD was deployed at 1647 h. At 1731 h, the CTD was 1.5 m off the bottom, and the first three Niskin bottles were fired. Two further Niskin bottles were fired on the way up, with a final one near the surface (Tables T4, T5). The CTD was recovered on deck at 1812 h. The vessel then left the site to continue a multibeam survey covering the western side of the Atlantis Massif complex.

The vessel returned to Hole M0073A at 2242 h on 14 November from Hole M0070B. The MeBo was made ready for deployment while repairs were ongoing with the RD2 after the communications failure (this turned out to be a software issue requiring a reboot of the Jupiter Control system).

Fitting the water sampling system back onto the MeBo was delayed; it was deployed at 0220 h on 15 November and landed on the seafloor at 0413 h. The seafloor was strewn with cobbles/boulders, causing leveling issues for the MeBo rig due to high slope angles upon landing. The MeBo was repositioned three times before finally settling on site at 0455 h and beginning coring operations. There were some concerns regarding the stability of the GUI Interface on the Mebo controlling system, potentially affected by feedback from the high slope angles.

At 0615 h, the MeBo team discovered that the base plate was damaged at some point, causing the port side leg to bend in and preventing the top drive from passing at the end of core Run 1. Coring operations were aborted and the MeBo was recovered on deck by 0909 h. RD2 repairs were ongoing, with the ram for the headshift requiring replacement following the discovery of a bent top pin preventing full extension. This was expected to take until midday. We decided to transit to Site M0076, and the vessel departed at 0909 h on 15 November.

One coring attempt was made in Hole M0073A to a maximum depth of 2.2 m with no recovery.

Site M0074

Hole M0074A

At 0824 h on 13 November 2015, we decided to temporarily cease the multibeam survey of the Atlantis Massif complex and conduct a CTD cast at Site M0074 (proposed Site AM-09A). This cast would obtain the baseline water information required for drilling the site at a later date and make the best use of the current “waiting on weather” status applicable to drilling operations. The CTD commenced at 0853 h, reaching approximately 1.3 m off the seafloor, and was back on deck and secure by 1042 h. Three Niskin bottles were fired near the seafloor, two were fired mid-water column, and one near the surface (Tables T4, T5). Following this process, the multibeam survey of the Atlantis Massif complex recommenced.

The vessel returned to Site M0074 on 30 November at 1050 h. With the RD2 nonoperational and the MeBo only able to run one barrel length before having to return to deck (due to loss of tool handling capability), we planned to conduct a series of short holes to try to intersect the fault deformation zone. The MeBo was deployed at 1056 h and was on seafloor, after a mid-water column winch problem, by 1256 h. Coring commenced at 1305 h and rapidly progressed with 2.68 m penetration by 1325 h. However, initial issues on recovery were followed by a mid-water column stop to replace a failed winch controller card at 1450 h. The MeBo was recovered on deck at 1535 h. With no further drill operations now possible for either drill, we decided to continue with the multibeam survey. The vessel departed the site at 1620 h on 30 November.

One coring attempt was made in Hole M0074A to a maximum depth of 2.68 m with 32.09% recovery.

Site M0075

Hole M0075A

At 0300 on 14 November 2015 h, the vessel turned onto an east-southeast course for Site M0075 (proposed Site AM-03A). The vessel settled into DP mode at 0800 h; however, the swell was still prohibitive for the deployment of either drill (>4 m). At 0838 h, a CTD cast was begun. At 1003 h, the CTD was 2.4 m off the bottom, and the first three Niskin bottles were fired. Two further Niskin bottles were fired on the way up, with a final one fired near the surface (Tables T4, T5). The CTD was recovered on deck by 1102 h. Having completed the CTD, the sea state was still too rough, so the vessel moved off site at 1111 h on 14 November to conduct an additional CTD cast over the MAR.

The vessel returned to Site M0075 on 28 November at 0625 h from Hole M0071C. The RD2 was initially deployed at 0654 h. However, after repositioning three times because of the angle of the rig on landing, the RD2 had to return to deck at 0912 h because of a minor oil leak. The RD2 was redeployed at 1058 h and landed on the seafloor at 1153 h. Coring commenced at 1210 h, and the first core run was completed by 1320 h. Core Barrel 2 was loaded into the BHA at 1356 h, but at 1400 h the RD2 suffered a sensor cable fault and we had to abandon the hole, returning it on deck at 1500 h. The vessel held position while for repairs. By 1700 h, the cable was changed out, but a hydraulic leak in the top drive was discovered. The only option was to exchange the top drive for another one, which would take approximately 18 h. The fault with the MeBo, suffered in Hole M0071C, was a hydraulic slip ring inside the top drive assembly that is not repairable at sea. Because repairs to the RD2 would take some time, we decided to leave the site and continue running the multibeam survey. The vessel departed the site at 2013 h on 28 November.

One coring attempt was made in Hole M0075A to a maximum depth of 1.72 m with 37.79% recovery.

Hole M0075B

The vessel arrived on station at 0725 h on 29 November 2015 having completed a short multibeam survey at 0547 h. Repairs were still ongoing on the RD2, so the vessel waited on station until the drill was ready for deployment at 1505 h. During mid-water column checks a misalignment between the newly fitted top drive and the breakout table was noted, and the RD2 was recovered on deck at 1540 h. The RD2 crew removed the shims from the breakout table and redeployed at 1834 h despite a small misalignment. The RD2 landed on the seafloor at 1941 h and began coring operations at 1948 h. The first core was recovered at 2028 h. The second barrel

was inserted, and a rod was added. The misalignment meant that this previously automated action had to be done manually, after the first automated try resulted in the threads of the rod being ripped off. This situation meant longer rod handling times but allowed coring to continue despite the misalignment.

Core Run 2 was completed at 2329 h, and a new core run commenced at 0015 h on 30 November. At 0530 h, there was a technical failure in the ECU motherboard, terminating the hole and preventing any logging runs because we were could not operate the overshot. The Niskin bottles were fired at 0612 h, the drill rods and BHA were recovered to the rig by 0652 h, and a shortened version of the downhole plug was installed by 0845 h. The RD2 was back on deck and secure by 0950 h on 30 November, and the vessel departed for Site M0074 immediately.

Three coring attempts were made in Hole M0075B to a maximum depth of 5.7 m with 47.88% recovery.

Site M0076

Hole M0076A

The vessel arrived at Site M0076 (proposed Site AM-11A) at 1020 h on 15 November 2015 and settled into DP mode. RD2 pre-deployment checks were still ongoing at the time of arrival, and deployment was delayed until 1339 h. Coring operations began at 1456 h with rapid penetration to 1.72 mbsf (end of core Run 1) by 1523 h. A hydraulic leak on the headshift terminated the hole early, and the RD2 was recovered on deck by 1606 h. No Niskin bottles were fired under instruction from the Co-Chief Scientist on shift.

The MeBo was still being repaired following the damage to the base plate and leg, so the RD2 was rapidly turned around and redeployed in Hole M0076B.

One coring attempt was made in Hole M0076A to a maximum depth of 1.72 m with 23.26% recovery.

Hole M0076B

The RD2 was redeployed at Site M0076 at 1731 h on 15 November 2015. After initially landing on the seafloor at 1812 h, the drill had to be repositioned because of a high slope angle caused by landing unevenly on cobbles/boulders. The RD2 finally settled on the seafloor at 2012 h after three attempts to reposition both the drill and the umbilical. Coring operations commenced at 2040. Coring continued well until the end of core Run 2 (0005 h on 16 November), when high flush had to be run until 0133 h to free the stuck core barrel. A further eight core runs were recovered at 0615, 0933, 1336, 1706, and 2158 h on 16 November and 0132, 0429, and 0914 h on 17 November. At 14.75 m penetration, high backpressure on the flush pump was noted due to a "sticky" section. At the start of core Run 11 (penetration = 16.3 m), there was difficulty reaming back to the base of the hole. The rods became stuck with a small stick-up due to failure of the gate valve and subsequently no flush flow into the borehole. There was difficulty removing the overshot spear point from the overshot; this was finally achieved using the fishing tool, which is slightly shorter in length.

Prior to attempting to free the drill rods, two OAG logging passes were completed through the pipe logging from the bottom up. The logging runs commenced at 1315 h and were complete by 1347 h. Various attempts were then made to free the drill rods, enabling the last rod to be unscrewed and recovered. An attempt was then made to connect the borehole plug to the drill rods still in the borehole, but it could not be connected. In attempting connection, the "J" connection at the top of the plug parted, resulting in the plug being unconnected both top and bottom. It was clamped in the

breakout jaws but was lost during recovery of the drill. The RD2 was recovered on deck by 1656 h on 17 November.

While coring was ongoing, repairs were undertaken on the MeBo drill to port and starboard leg positions, a missing base plate, and the leg connection point. Some areas were cut away to allow for welding of new plates to strengthen the frame. On recovery, the RD2 crew required 12–14 h of maintenance to get the drill operational. As both drills were unavailable for deployment, we decided to continue with the multibeam survey, imaging the conjugate margin of the Atlantis Massif complex. The vessel departed Site M0076 at 1900 h on 17 November.

Ten coring attempts were made in Hole M0076B to a maximum depth of 16.3 m with 71.79% recovery.

Transit back to Southampton, UK

The vessel departed from the Atlantis Massif survey area at 0200 h on 2 December 2015. The vessel arrived at the pilot station at the entrance to Southampton Water at 0600 h UTC on 11 December, and the pilot came onboard at 0830 h UTC for the final approach into Southampton and the National Oceanography Centre Southampton quayside. The ropes were ashore by 1000 h UTC.

Outreach and communication

The primary objective of Expedition 357 outreach and communication efforts was to demonstrate the benefits and excitement of the expedition's science and the IODP program in general to the media, nongovernmental organizations, governments, the scientific community, and the general public.

To accomplish this objective, our primary efforts were publicity of the expedition's aims and findings to international media, focused on media and journalist networks developed within the IODP/ECORD community and through the scientific participants. Secondary efforts were focused on hosting web-logs during the expedition for the general public to follow along with the life of science at sea.

Targeted activities in support of the communication objective included

- Preparation of expedition promotional materials, including an expedition logo, flier, and briefing kit.
- Radio interviews with, for example, the British Broadcasting Corporation (BBC) for use on local and national news, as well as the BBC World Service.
- Organization of a media briefing prior to the start of the expedition. This briefing was held at the Foreign Press Office in London, England (UK), on 22 October 2015. The briefing included short presentations by the Co-Chief Scientists about the scientific aims of the expedition, followed by a question and answer session with journalists. This was followed by a small media briefing onboard the *RRS James Cook* for local journalists in Southampton.
- Organization of a second media event during the on-shore phase of the expedition. This event was held on 1 February 2016 at MARUM and featured short presentations by the Co-Chief Scientists followed by interviews and tours of the laboratory facilities and core repository.

- Individual contacts and interviews of members of the science party with public relations services at their home institutions and with local media in different countries.
- Regular promotion of the expedition's accomplishments through posts on social media platforms such as Twitter.

These efforts were successful in gaining international attention for the expedition, which was featured in news articles in Finland, France, Germany, UK, and USA, as well as radio and TV segments with interviews from the Co-Chief Scientists and several scientific participants. The expedition's science is also targeted for feature in a news documentary.

References

- Alt, J.C., and Shanks, W.C., III, 1998. Sulfur in serpentinized oceanic peridotites: serpentinization processes and microbial sulfate reduction. *Journal of Geophysical Research: Solid Earth*, 103(B5):9917–9929. <http://dx.doi.org/10.1029/98JB00576>
- Alt, J.C., and Shanks, W.C., III, 2003. Serpentinization of abyssal peridotites from the MARK area, Mid-Atlantic Ridge: sulfur geochemistry and reaction modeling. *Geochimica et Cosmochimica Acta*, 67(4):641–653. [http://dx.doi.org/10.1016/S0016-7037\(02\)01142-0](http://dx.doi.org/10.1016/S0016-7037(02)01142-0)
- Alt, J.C., and Shanks, W.C., III, 2006. Stable isotope compositions of serpentinite seamounts in the Mariana forearc: serpentinization processes, fluid sources and sulfur metasomatism. *Earth and Planetary Science Letters*, 242(3–4):272–285. <http://dx.doi.org/10.1016/j.epsl.2005.11.063>
- Andreani, M., Luquot, L., Gouze, P., Godard, M., Hoisé, E., and Gibert, B., 2009. Experimental study of carbon sequestration reactions controlled by the percolation of CO₂-rich brine through peridotites. *Environmental Science & Technology*, 43(4):1226–1231. <http://dx.doi.org/10.1021/es8018429>
- Andreani, M., Mével, C., Boullier, A.-M., and Escartin, J., 2007. Dynamic control on serpentine crystallization in veins: constraints on hydration processes in oceanic peridotites. *Geochemistry, Geophysics, Geosystems*, 8(2):Q02012. <http://dx.doi.org/10.1029/2006GC001373>
- Bach, W., and Klein, E., 2009. The petrology of seafloor rodingites: insights from geochemical reaction path modeling. *Lithos*, 112(1–2):103–117. <http://dx.doi.org/10.1016/j.lithos.2008.10.022>
- Biddle, J.F., Lipp, J.S., Lever, M.A., Lloyd, K.G., Sørensen, K.B., Anderson, R., Fredricks, H.F., Elvert, M., Kelly, T.J., Schrag, D.P., Sogin, M.L., Brenchley, J.E., Teske, A., House, C.H., and Hinrichs, K.-U., 2006. Heterotrophic Archaea dominate sedimentary subsurface ecosystems off Peru. *Proceedings of the National Academy of Sciences of the United States of America*, 103(10):3846–3851. <http://dx.doi.org/10.1073/pnas.0600035103>
- Blackman, D.K., Karson, J.A., Kelley, D.S., Cann, J.R., Früh-Green, G.L., Gee, J.S., Hurst, S.D., John, B.E., Morgan, J., Nooner, S.L., Ross, D.K., Schroeder, T.J., and Williams, E.A., 2002. Geology of the Atlantis Massif (Mid-Atlantic Ridge, 30°N): implications for the evolution of an ultramafic oceanic core complex. *Marine Geophysical Research*, 23(5–6):443–469. <http://dx.doi.org/10.1023/B:MARI.0000018232.14085.75>
- Boschi, C., Dini, A., Dallai, L., Ruggieri, G., and Gianelli, G., 2009. Enhanced CO₂-mineral sequestration by cyclic hydraulic fracturing and Si-rich fluid infiltration into serpentinites at Malenrata (Tuscany, Italy). *Chemical Geology*, 265(1–2):209–226. <http://dx.doi.org/10.1016/j.chemgeo.2009.03.016>
- Boschi, C., Dini, A., Früh-Green, G.L., and Kelley, D.S., 2008. Isotopic and element exchange during serpentinization and metasomatism at the Atlantis Massif (MAR 30°N): insights from B and Sr isotopes. *Geochimica et Cosmochimica Acta*, 72(7):1801–1823. <http://dx.doi.org/10.1016/j.gca.2008.01.013>

- Boschi, C., Früh-Green, G.L., Delacour, A., Karson, J.A., and Kelley, D.S., 2006. Mass transfer and fluid flow during detachment faulting and development of an oceanic core complex, Atlantis Massif (MAR 30°N). *Geochemistry, Geophysics, Geosystems*, 7(1):Q01004. <http://dx.doi.org/10.1029/2005GC001074>
- Bougault, H., Charlou, J.-L., Fouquet, Y., Needham, H.D., Vaslet, N., Appriou, P., Baptiste, P.J., Rona, P.A., Dmitriev, L., and Silantiev, S., 1993. Fast and slow spreading ridges: structure and hydrothermal activity, ultramafic topographic highs, and CH₄ output. *Journal of Geophysical Research: Solid Earth*, 98(B6):9643–9651. <http://dx.doi.org/10.1029/93JB00508>
- Bradley, A.S., Fredricks, H., Hinrichs, K.-U., and Summons, R.E., 2009a. Structural diversity of diether lipids in carbonate chimneys at the Lost City hydrothermal field. *Organic Geochemistry*, 40(12):1169–1178. <http://dx.doi.org/10.1016/j.orggeochem.2009.09.004>
- Bradley, A.S., Hayes, J.M., and Summons, R.E., 2009b. Extraordinary ¹³C enrichment of diether lipids at the Lost City hydrothermal field indicates a carbon-limited ecosystem. *Geochimica et Cosmochimica Acta*, 73(1):102–118. <http://dx.doi.org/10.1016/j.gca.2008.10.005>
- Brazelton, W.J., and Baross, J.A., 2009. Abundant transposases encoded by the metagenome of a hydrothermal chimney biofilm. *ISME Journal*, 3(12):1420–1424. <http://dx.doi.org/10.1038/ismej.2009.79>
- Brazelton, W.J., Ludwig, K.A., Sogin, M.L., Andreishcheva, E.N., Kelley, D.S., Shen, C.-C., Edwards, R.L., and Baross, J.A., 2010. Archaea and bacteria with surprising microdiversity show shifts in dominance over 1,000-year time scales in hydrothermal chimneys. *Proceedings of the National Academy of Sciences of the United States of America*, 107(4):1612–1671. <http://dx.doi.org/10.1073/pnas.0905369107>
- Brazelton, W.J., Schrenk, M.O., Kelley, D.S., and Baross, J.A., 2006. Methane- and sulfur-metabolizing microbial communities dominate the Lost City hydrothermal field ecosystem. *Applied and Environmental Microbiology*, 72(9):6257–6270. <http://dx.doi.org/10.1128/AEM.00574-06>
- Brazelton, W.J., Sogin, M.L., and Baross, J.A., 2009. Multiple scales of diversification within natural populations of archaea in hydrothermal chimney biofilms. *Environmental Microbiology Reports*, 2(2):236–242. <http://dx.doi.org/10.1111/j.1758-2229.2009.00097.x>
- Campbell, B.J., Engel, A.S., Porter, M.L., and Takai, K., 2006. The versatile ϵ -proteobacteria: key players in sulphidic habitats. *Nature Reviews Microbiology*, 4(6):458–468. <http://dx.doi.org/10.1038/nrmicro1414>
- Cann, J.R., Blackman, D.K., Smith, D.K., McAllister, E., Janssen, B., Mello, S., Avgerinos, E., Pascoe, A.R., and Escartin, J., 1997. Corrugated slip surfaces formed at ridge–transform intersections on the Mid-Atlantic Ridge. *Nature*, 385(6614):329–332. <http://dx.doi.org/10.1038/385329a0>
- Cannat, M., 1993. Emplacement of mantle rocks in the seafloor at mid-ocean ridges. *Journal of Geophysical Research: Solid Earth*, 98(B3):4163–4172. <http://dx.doi.org/10.1029/92JB02221>
- Cannat, M., Cann, J., and MacLennan, J., 2004. Some hard rock constraints on the supply of heat to mid-ocean ridges. In German, C.R., Lin, J., and Parsons, L.M. (Eds.), *Mid-Ocean Ridges: Hydrothermal Interactions Between the Lithosphere and Oceans*. Geophysical Monograph, 148:111–149. <http://dx.doi.org/10.1029/148GM05>
- Cannat, M., Sauter, D., Mendel, V., Ruellan, E., Okino, K., Escartin, J., Comber, V., and Baala, M., 2006. Modes of seafloor generation at a melt-poor ultraslow-spreading ridge. *Geology*, 34(7):605–608. <http://dx.doi.org/10.1130/G22486.1>
- Charlou, J.L., Bougault, H., Appriou, P., Nelsen, T., and Rona, P., 1991. Different TDM/CH₄ hydrothermal plume signatures: TAG site at 26°N and serpentinized ultrabasic diapir at 15°05'N on the Mid-Atlantic Ridge. *Geochimica et Cosmochimica Acta*, 55(11):3209–3222. [http://dx.doi.org/10.1016/0016-7037\(91\)90484-M](http://dx.doi.org/10.1016/0016-7037(91)90484-M)
- Charlou, J.L., Donval, J.P., Fouquet, Y., Jean-Baptiste, P., and Holm, N., 2002. Geochemistry of high H₂ and CH₄ vent fluids issuing from ultramafic rocks at the Rainbow hydrothermal field (36°14'N, MAR). *Chemical Geology*, 191(4):345–359. [http://dx.doi.org/10.1016/S0009-2541\(02\)00134-1](http://dx.doi.org/10.1016/S0009-2541(02)00134-1)
- Charlou, J.L., Fouquet, Y., Bougault, H., Donval, J.P., Etoubleau, J., Jean-Baptiste, P., Dapigny, A., Appriou, P., and Rona, P.A., 1998. Intense CH₄ plumes generated by serpentinization of ultramafic rocks at the intersection of the 15°20'N fracture zone and the Mid-Atlantic Ridge. *Geochimica et Cosmochimica Acta*, 62(13):2323–2333. [http://dx.doi.org/10.1016/S0016-7037\(98\)00138-0](http://dx.doi.org/10.1016/S0016-7037(98)00138-0)
- Delacour, A., Früh-Green, G.L., and Bernasconi, S.M., 2008a. Sulfur mineralogy and geochemistry of serpentinites and gabbros of the Atlantis Massif (IODP Site U1309). *Geochimica et Cosmochimica Acta*, 72(20):5111–5127. <http://dx.doi.org/10.1016/j.gca.2008.07.018>
- Delacour, A., Früh-Green, G.L., Bernasconi, S.M., and Kelley, D.S., 2008b. Sulfur in peridotites and gabbros at Lost City (30°N, MAR): implications for hydrothermal alteration and microbial activity during serpentinization. *Geochimica et Cosmochimica Acta*, 72(20):5090–5110. <http://dx.doi.org/10.1016/j.gca.2008.07.017>
- Delacour, A., Früh-Green, G.L., Bernasconi, S.M., Schaeffer, P., and Kelley, D.S., 2008c. Carbon geochemistry of serpentinites in the Lost City hydrothermal system (30°N, MAR). *Geochimica et Cosmochimica Acta*, 72(15):3681–3702. <http://dx.doi.org/10.1016/j.gca.2008.04.039>
- Delacour, A., Früh-Green, G.L., Frank, M., Gutjahr, M., and Kelley, D.S., 2008d. Sr- and Nd-isotope geochemistry of the Atlantis Massif (30°N, MAR): implications for fluid fluxes and lithospheric heterogeneity. *Chemical Geology*, 254(1–2):19–35. <http://dx.doi.org/10.1016/j.chemgeo.2008.05.018>
- deMartin, B.J., Sohn, R.A., Canales, J.P., and Humphris S.E., 2007. Kinematics and geometry of active detachment faulting beneath the Trans-Atlantic Geotraverse (TAG) hydrothermal field on the Mid-Atlantic Ridge. *Geology*, 35(8):711–741. <http://dx.doi.org/10.1130/G23718A.1>
- D'Hondt, S., Rutherford, S., and Spivack, A.J., 2002. Metabolic activity of subsurface life in deep-sea sediments. *Science*, 295(5562):2067–2070. <http://dx.doi.org/10.1126/science.1064878>
- D'Hondt, S., Jørgensen, B.B., Miller, D.J., Batzke, A., Blake, R., Cragg, B.A., Cypionka, H., Dickens, G.R., Ferdelman, T., Hinrichs, K.-U., Holm, N.G., Mitterer, R., Spivack, A., Wang, G., Bekins, B., Engelen, B., Ford, K., Gettemy, G., Rutherford, S.D., Sass, H., Skilbeck, C.G., Aiello, I.W., Guerin, G., House, C.H., Inagaki, F., Meister, P., Naehr, T., Niitsuma, S., Parkes, R.J., Schippers, A., Smith, D.C., Teske, A., Wiegel, J., Naranjo Padillo, C., and Solis Acosta, J.L., 2004. Distributions of microbial activities in deep seafloor sediments. *Science*, 306(5705):2216–2221. <http://dx.doi.org/10.1126/science.1101155>
- Dick, H.J.B., Lin, J., and Schouten, H., 2003. An ultraslow-spreading class of ocean ridge. *Nature*, 426(6965):405–412. <http://dx.doi.org/10.1038/nature02128>
- Dick, H.J.B., Natland, J.H., Alt, J.C., Bach, W., Bideau, D., Gee, J.S., Haggas, S., Hertogen, J.G.H., Hirth, G., Holm, P.M., Ildefonso, B., Iturrino, G.J., John, B.E., Kelley, D.S., Kikawa, E., Kingdon, A., LeRoux, P.J., Maeda, J., Meyer, P.S., Miller, D.J., Naslund, H.R., Niu, Y.-L., Robinson, P.T., Snow, J., Stephen, R.A., Trimby, P.W., Worm, H.-U., and Yoshinobu, A., 2000. A long in situ section of the lower ocean crust: results of ODP Leg 176 drilling at the Southwest Indian Ridge. *Earth and Planetary Science Letters*, 179(1):31–51. [http://dx.doi.org/10.1016/S0012-821X\(00\)00102-3](http://dx.doi.org/10.1016/S0012-821X(00)00102-3)
- Dick, H.J.B., Tivey, M.A., and Tucholke, B.E., 2008. Plutonic foundation of a slow-spreading ridge segment: oceanic core complex at Kane Megamullion, 23°30'N, 45°20'W. *Geochemistry, Geophysics, Geosystems*, 9(5):Q05014. <http://dx.doi.org/10.1029/2007GC001645>
- Douville, E., Charlou, J.L., Donval, J.P., Knoery, J., and Fouquet, Y., 1997. Trace elements in fluids from the new Rainbow hydrothermal field (36°14'N, MAR): a comparison with other Mid-Atlantic Ridge fluids. *Eos, Transactions of the American Geophysical Union*, 78:832.
- Douville, E., Charlou, J.L., Oelkers, E.H., Bienvu, P., Jove Colon, C.F., Donval, J.P., Fouquet, Y., Prieur, D., and Appriou, P., 2002. The Rainbow Vent fluids (36°14'N, MAR): the influence of ultramafic rocks and phase separation on trace metal content in Mid-Atlantic Ridge hydrothermal fluids. *Chemical Geology*, 184(1–2):37–48. [http://dx.doi.org/10.1016/S0009-2541\(01\)00351-5](http://dx.doi.org/10.1016/S0009-2541(01)00351-5)
- Dupraz, C., Reid, R.P., Braissant, O., Decho, A.W., Norman, R.S., and Visscher, P.T., 2009. Processes of carbonate precipitation in modern microbial mats. *Earth-Science Reviews*, 96(3):141–162. <http://dx.doi.org/10.1016/j.earscirev.2008.10.005>
- Ehrlich, H.L., 2009. Microbial formation and degradation of carbonates. In Ehrlich, H.L., and Newman, D.K. (Eds.), *Geomicrobiology* (5th edition): Boca Raton, FL (CRC Press), 157–191.

- Escartín, J., Andreani, M., Hirth, G., and Evans, B., 2008. Relationships between the microstructural evolution and the rheology of talc at elevated pressures and temperatures. *Earth and Planetary Science Letters*, 268(3–4):463–475. <http://dx.doi.org/10.1016/j.epsl.2008.02.004>
- Escartín, J., Mével, C., MacLeod, C.J., and McCaig, A.M., 2003. Constraints on deformation conditions and the origin of oceanic detachments: the Mid-Atlantic Ridge core complex at 15°45'N. *Geochemistry, Geophysics, Geosystems*, 4(8):1067. <http://dx.doi.org/10.1029/2002GC000472>
- Expedition 301 Scientists, 2005. Expedition 301 summary. In Fisher, A.T., Urabe, T., Klaus, A., and the Expedition 301 Scientists, *Proceedings of the Integrated Ocean Drilling Program*, 301: College Station, TX (Integrated Ocean Drilling Program Management International, Inc.). <http://dx.doi.org/10.2204/iodp.proc.301.101.2005>
- Expedition 304/305 Scientists, 2006. Expedition 304/305 summary. In Blackman, D.K., Ildefonse, B., John, B.E., Ohara, Y., Miller, D.J., MacLeod, C.J., and the Expedition 304/305 Scientists, *Proceedings of the Integrated Ocean Drilling Program*, 304/305: College Station, TX (Integrated Ocean Drilling Program Management International, Inc.). <http://dx.doi.org/10.2204/iodp.proc.304305.101.2006>
- Expedition Scientific Party, 2005a. Oceanic core complex formation, Atlantis Massif—oceanic core complex formation, Atlantis Massif, Mid-Atlantic Ridge: drilling into the footwall and hanging wall of a tectonic exposure of deep, young oceanic lithosphere to study deformation, alteration, and melt generation. *Integrated Ocean Drilling Program Preliminary Report*, 304. <http://dx.doi.org/10.2204/iodp.pr.304.2005>
- Expedition Scientific Party, 2005b. Oceanic core complex formation, Atlantis Massif—oceanic core complex formation, Atlantis Massif, Mid-Atlantic Ridge: drilling into the footwall and hanging wall of a tectonic exposure of deep, young oceanic lithosphere to study deformation, alteration, and melt generation. *Integrated Ocean Drilling Program Preliminary Report*, 305. <http://dx.doi.org/10.2204/iodp.pr.305.2005>
- Fisher, A.T., 1998. Permeability within basaltic oceanic crust. *Reviews of Geophysics*, 36(2):143–182. <http://dx.doi.org/10.1029/97RG02916>
- Fisher, A.T., and Becker, K., 2000. Channelized fluid flow in oceanic crust reconciles heat-flow and permeability data. *Nature*, 403(6765):71–74. <http://dx.doi.org/10.1038/47463>
- Foustoukos, D.L., and Seyfried, W.E., Jr., 2004. Hydrocarbons in hydrothermal vent fluids: the role of chromium-bearing catalysts. *Science*, 304(5673):1002–1005. <http://dx.doi.org/10.1126/science.1096033>
- Freifeld, B., 2009. The U-tube: a new paradigm for borehole fluid sampling. *Scientific Drilling*, 8:41–45. <http://dx.doi.org/10.2204/iodp.sd.8.07.2009>
- Frost, B.R., Beard, J.S., McCaig, A., and Condliffe, E., 2008. The formation of micro-rodingites from IODP Hole U1309D: key to understanding the process of serpentinization. *Journal of Petrology*, 49(9):1579–1588. <http://dx.doi.org/10.1093/petrology/egn038>
- Früh-Green, G.L., Connolly, J.A.D., Plas, A., Kelley, D.S., and Grobóty, B., 2004. Serpentinization of oceanic peridotites: implications for geochemical cycles and biological activity. In Wilcock, W.S.D., DeLong, E.F., Kelley, D.S., Baross, J.A., and Cary, C. (Eds.), *The Subseafloor Biosphere at Mid-Ocean Ridges*. Geophysical Monograph, 144:119–136. <http://onlinelibrary.wiley.com/doi/10.1029/144GM08/summary>
- Früh-Green, G.L., Kelley, D.S., Bernasconi, S.M., Karson, J.A., Ludwig, K.A., Butterfield, D.A., Boschi, C., and Proskurowski, G., 2003. 30,000 years of hydrothermal activity at the Lost City vent field. *Science*, 301(5632):495–498. <http://dx.doi.org/10.1126/science.1085582>
- German, C.R., Thurnherr, A.M., Knoery, J., Charlou, J.L., Jean-Baptiste, P., and Edmonds, H.N., 2009. Export fluxes from submarine venting to the ocean: a synthesis of results from the Rainbow hydrothermal field, 36°N MAR. *Geochimica et Cosmochimica Acta*, 73(13)(Supplement):A428. <http://dx.doi.org/10.1016/j.gca.2009.05.025>
- Gold, T., 1979. Terrestrial sources of carbon and earthquake outgassing. *Journal of Petroleum Geology*, 1(3):3–19. <http://dx.doi.org/10.1111/j.1747-5457.1979.tb00616.x>
- Gold, T., 1999. *The Deep Hot Biosphere: The Myth of Fossil Fuels*: New York (Springer-Verlag).
- Grimes, C.B., John, B.E., Cheadle, M.J., and Wooden, J.L., 2008. Protracted construction of gabbroic crust at a slow spreading ridge: constraints from ²⁰⁶Pb/²³⁸U zircon ages from Atlantis Massif and IODP Hole U1309D (30°N, MAR). *Geochemistry, Geophysics, Geosystems*, 9:Q08012. <http://dx.doi.org/10.1029/2008GC002063>
- Haggerty, J.A., 1991. Evidence from fluid seeps atop serpentine seamounts in the Mariana forearc: clues for emplacement of the seamounts and their relationship to forearc tectonics. *Marine Geology*, 102(1–4):293–309. [http://dx.doi.org/10.1016/0025-3227\(91\)90013-T](http://dx.doi.org/10.1016/0025-3227(91)90013-T)
- Hinrichs, K.-U., Hayes, J.M., Bach, W., Spivack, A.J., Hmelo, L.R., Holm, N.G., Johnson, C.G., and Sylva, S.P., 2006. Biological formation of ethane and propane in the deep marine subsurface. *Proceedings of the National Academy of Science of the United States of America*, 103(40):14684–14689. <http://dx.doi.org/10.1073/pnas.0606535103>
- Holm, N.G., and Andersson, E.M., 1998. Hydrothermal systems. In Brack, A. (Ed.), *The Molecular Origins of Life: Assembling Pieces of the Puzzle*. Cambridge, United Kingdom (Cambridge University Press), 86–99. <http://dx.doi.org/10.1017/CBO9780511626180.006>
- Holm, N.G., and Charlou, J.L., 2001. Initial indications of abiotic formation of hydrocarbons in the Rainbow ultramafic hydrothermal system, Mid-Atlantic Ridge. *Earth and Planetary Science Letters*, 191(1–2):1–8. [http://dx.doi.org/10.1016/S0012-821X\(01\)00397-1](http://dx.doi.org/10.1016/S0012-821X(01)00397-1)
- Huber, J.A., Butterfield, D.A., and Baross, J.A., 2002. Temporal changes in archaeal diversity and chemistry in a mid-ocean ridge seafloor habitat. *Applied Environmental Microbiology*, 68(4):1585–1594. <http://dx.doi.org/10.1128/AEM.68.4.1585-1594.2002>
- Huber, J.A., Butterfield, D.A., and Baross, J.A., 2003. Bacterial diversity in a seafloor habitat following a deep-sea volcanic eruption. *FEMS Microbiology Ecology*, 43(3): 393–409. <http://dx.doi.org/10.1111/j.1574-6941.2003.tb01080.x>
- Humphris, S.E., and Cann, J.R., 2000. Constraints on the energy and chemical balances of the modern TAG and ancient Cyprus seafloor sulfide deposits. *Journal of Geophysical Research: Solid Earth*, 105(B12):28477–28488. <http://dx.doi.org/10.1029/2000JB900289>
- Ildefonse, B., Blackman, D.K., John, B.E., Ohara, Y., Miller, D.J., MacLeod, C.J., and Integrated Ocean Drilling Program Expeditions 304/305 Science Party, 2007. Oceanic core complexes and crustal accretion at slow-spreading ridges. *Geology*, 35(7):623–626. <http://dx.doi.org/10.1130/G23531A.1>
- Inagaki, F., Nunoura, T., Nakagawa, S., Teske, A., Lever, M., Lauer, A., Suzuki, M., Takai, K., Delwiche, M., Colwell, F.S., Neelson, K.H., Horikoshi, K., D'Hondt, S., and Jørgensen, B.B., 2006. Biogeographical distribution and diversity of microbes in methane hydrate-bearing deep marine sediments on the Pacific Ocean margin. *Proceedings of the National Academy of Science of the United States of America*, 103(8):2815–2820. <http://dx.doi.org/10.1073/pnas.0511033103>
- Jöns, N., Bach, W., and Schroeder, T., 2009. Formation and alteration of plagiogranites in an ultramafic-hosted detachment fault at the Mid-Atlantic Ridge (ODP Leg 209). *Contributions to Mineralogy and Petrology*, 157(5):625–639. <http://dx.doi.org/10.1007/s00410-008-0357-2>
- Karson, J.A., Früh-Green, G.L., Kelley, D.S., Williams, E.A., Yoerger, D.R., and Jakuba, M., 2006. Detachment shear zone of the Atlantis Massif core complex, Mid-Atlantic Ridge, 30°N. *Geochemistry, Geophysics, Geosystems*, 7(6):Q06016. <http://dx.doi.org/10.1029/2005GC001109>
- Kelemen, P.B., Kikawa, E., Miller, D.J., and Shipboard Scientific Party, 2007. Leg 209 summary: processes in a 20-km-thick conductive boundary layer beneath the Mid-Atlantic Ridge, 14°–16°N. In Kelemen, P.B., Kikawa, E., and Miller, D.J. (Eds.), *Proceedings of the Ocean Drilling Program, Scientific Results*, 209: College Station, TX (Ocean Drilling Program), 1–33. <http://dx.doi.org/10.2973/odp.proc.sr.209.001.2007>
- Kelemen, P.B., and Matter, J., 2008. In situ carbonation of peridotite for CO₂ storage. *Proceedings of the National Academy of Sciences of the United States of America*, 105(45):17295–17300. <http://dx.doi.org/10.1073/pnas.0805794105>
- Kelley, D.S., Karson, J.A., Blackman, D.K., Früh-Green, G.L., Butterfield, D.A., Lilley, M.D., Olson, E.J., Schrenk, M.O., Roe, K.K., Lebon, G.T., Rivizzigno, P., and the AT3-60 Shipboard Party, 2001. An off-axis hydrothermal vent field near the Mid-Atlantic Ridge at 30°N. *Nature*, 412(6843):145–149. <http://dx.doi.org/10.1038/35084000>

- Kelley, D.S., Karson, J.A., Früh-Green, G.L., Yoerger, D.R., Shank, T.M., Butterfield, D.A., Hayes, J.M., Schrenk, M.O., Olson, E.J., Proskurowski, G., Jakuba, M., Bradley, A., Larson, B., Ludwig, K., Glickson, D., Buckman, K., Bradley, A.S., Brazelton, W.J., Roe, K., Elend, M.J., Delacour, A., Bernasconi, S.M., Lilley, M.D., Baross, J.A., Summons, R.E., and Sylva, S.P., 2005. A serpentinite-hosted ecosystem: the Lost City hydrothermal field. *Science*, 307(5714):1428–1434. <http://dx.doi.org/10.1126/science.1102556>
- Konn, C., Charlou, J.L., Donval, J.P., Holm, N.G., Dehairs, F., and Bouillon, S., 2009. Hydrocarbons and oxidized organic compounds in hydrothermal fluids from Rainbow and Lost City ultramafic-hosted vents. *Chemical Geology*, 258(3–4):299–314. <http://dx.doi.org/10.1016/j.chemgeo.2008.10.034>
- Lalou, C., Reyss, J.-L., Bricchet, E., Rona, P.A., and Thompson, G., 1995. Hydrothermal activity on a 10⁵-year scale at a slow-spreading ridge, TAG hydrothermal field, Mid-Atlantic Ridge 26°N. *Journal of Geophysical Research: Solid Earth*, 100(B9):17855–17862. <http://dx.doi.org/10.1029/95JB01858>
- Lang, S.Q., Butterfield, D.A., Schulte, M., Kelley, D.S., and Lilley, M.D., 2010. Elevated concentrations of formate, acetate and dissolved organic carbon found at the Lost City hydrothermal field. *Geochimica et Cosmochimica Acta*, 74(3):941–952. <http://dx.doi.org/10.1016/j.gca.2009.10.045>
- Lang, S.Q., Früh-Green, G.L., Bernasconi, S.M., Lilley, M.D., Proskurowski, G., Méhay, S., and Butterfield, D.A., 2012. Microbial utilization of abiotic carbon and hydrogen in a serpentinite-hosted system. *Geochimica et Cosmochimica Acta*, 92:82–99. <http://dx.doi.org/10.1016/j.gca.2012.06.006>
- Lipp, J.S., Morono, Y., Inagaki, F., and Hinrichs, K.-U., 2008. Significant contribution of Archaea to extant biomass in marine subsurface sediments. *Nature*, 454(7207):991–994. <http://dx.doi.org/10.1038/nature07174>
- Ludwig, K.A., Kelley, D.S., Butterfield, D.A., Nelson, B.K., and Früh-Green, G., 2006. Formation and evolution of carbonate chimneys at the Lost City hydrothermal field. *Geochimica et Cosmochimica Acta*, 70(14):3625–3645. <http://dx.doi.org/10.1016/j.gca.2006.04.016>
- Ludwig, K.A., Shen, C.-C., Kelley, D.S., Cheng, H., and Edwards, R.L., 2011. U-Th systematics and ²³⁰Th ages of carbonate chimneys at the Lost City hydrothermal field. *Geochimica et Cosmochimica Acta*, 75(7):1869–1888. <http://dx.doi.org/10.1016/j.gca.2011.01.008>
- Mason, O.U., Nakagawa, T., Rosner, M., Van Nostrand, J.D., Zhou, J., Maruyama, A., Fisk, M.R., and Giovannoni, S.J., 2010. First investigation of the microbiology of the deepest layer of ocean crust. *PLoS One*, 5(11):e15399. <http://dx.doi.org/10.1371/journal.pone.0015399>
- McCaug, A.M., Cliff, R.A., Escartin, J., Fallick, A.E., and MacLeod, C.J., 2007. Oceanic detachment faults focus very large volumes of black smoker fluids. *Geology*, 35(10):935–938. <http://dx.doi.org/10.1130/G23657A.1>
- McCaug, A.M., Delacour, A., Fallick, A.E., Castelain, T., and Früh-Green, G.L., 2010. Detachment fault control on hydrothermal circulation systems: interpreting the subsurface beneath the TAG hydrothermal field using the isotopic and geological evolution of oceanic core complexes in the Atlantic. In Rona, P.A., Devey, C.W., Dymont, J., and Murton, B.J. (Eds.), *Diversity of Hydrothermal Systems on Slow Spreading Ocean Ridges*. Geophysical Monograph, 188:207–239. <http://onlinelibrary.wiley.com/doi/10.1029/2008GM000729/summary>
- McCollom, T.M., 2007. Geochemical constraints on sources of metabolic energy for chemolithoautotrophy in ultramafic-hosted deep-sea hydrothermal systems. *Astrobiology*, 7(6):933–950. <http://dx.doi.org/10.1089/ast.2006.0119>
- McCollom, T.M., and Seewald, J.S., 2001. A reassessment of the potential for reduction of dissolved CO₂ to hydrocarbons during serpentinization of olivine. *Geochimica et Cosmochimica Acta*, 65(21):3769–3778. [http://dx.doi.org/10.1016/S0016-7037\(01\)00655-X](http://dx.doi.org/10.1016/S0016-7037(01)00655-X)
- McCollom, T.M., and Seewald, J.S., 2003. Experimental constraints on the hydrothermal reactivity of organic acids and acid anions: I. Formic acid and formate. *Geochimica et Cosmochimica Acta*, 67(19):3625–3644. [http://dx.doi.org/10.1016/S0016-7037\(03\)00136-4](http://dx.doi.org/10.1016/S0016-7037(03)00136-4)
- McCollom, T.M., and Seewald, J.S., 2006. Carbon isotope composition of organic compounds produced by abiotic synthesis under hydrothermal conditions. *Earth and Planetary Science Letters*, 243(1–2):74–84. <http://dx.doi.org/10.1016/j.epsl.2006.01.027>
- McCollom, T.M., and Shock, E.L., 1997. Geochemical constraints on chemolithoautotrophic metabolism by microorganisms in seafloor hydrothermal systems. *Geochimica et Cosmochimica Acta*, 61(20):4375–4391. [http://dx.doi.org/10.1016/S0016-7037\(97\)00241-X](http://dx.doi.org/10.1016/S0016-7037(97)00241-X)
- Méhay, S., Früh-Green, G.L., and Bernasconi, S.M., 2009. S-cycling and sulfurization processes at the Lost City hydrothermal field. *Geochimica et Cosmochimica Acta*, 73(13)(Supplement):A864. <http://dx.doi.org/10.1016/j.gca.2009.05.011>
- Méhay, S., Früh-Green, G.L., Lang, S.Q., Bernasconi, S.M., Brazelton, W.J., Schrenk, M.O., Schaeffer, P., and Adam, P., 2013. Record of archaeal activity at the serpentinite-hosted Lost City hydrothermal field. *Geobiology*, 11(6):570–592. <http://dx.doi.org/10.1111/gbi.12062>
- Mehta, M.P., and Baross, J.A., 2006. Nitrogen fixation at 92°C by a hydrothermal vent archaeon. *Science*, 314(5806):1783–1786. <http://dx.doi.org/10.1126/science.1134772>
- Michibayashi, K., Hirose, T., Nozaka, T., Hariagane, Y., Escartin, J., Delius, H., Linek, M., and Ohara, Y., 2008. Hydration due to high-T brittle failure within in situ oceanic crust, 30°N Mid-Atlantic Ridge. *Earth and Planetary Science Letters*, 275(3–4):348–354. <http://dx.doi.org/10.1016/j.epsl.2008.08.033>
- Moore, D.E., and Rymer, M.J., 2007. Talc-bearing serpentinite and the creeping section of the San Andreas fault. *Nature*, 448(7155):795–797. <http://dx.doi.org/10.1038/nature06064>
- Morris, A., Gee, J.S., Pressling, N., John, B.E., MacLeod, C.J., Grimes, C.B., and Searle, R.C., 2009. Footwall rotation in an oceanic core complex quantified using reoriented Integrated Ocean Drilling Program core samples. *Earth and Planetary Science Letters*, 287(1–2):217–228. <http://dx.doi.org/10.1016/j.epsl.2009.08.007>
- Mottl, M.J., and Haggerty, J.A., 1989. Upwelling of Cl-poor, S- and C-rich waters through a serpentinite seamount, Mariana Forearc, ODP Leg 125. *Eos, Transactions of the American Geophysical Union*, 70:1382. <http://dx.doi.org/10.1029/89EO00329>
- Nakagawa, S., Inagaki, F., Suzuki, Y., Steinsbu, B.O., Lever, M.A., Takai, K., Engelen, B., Sako, Y., Wheat, C.G., Horikoshi, K., and Integrated Ocean Drilling Program Expedition 301 Scientists, 2006. Microbial community in black rust exposed to hot ridge-flank crustal fluids. *Applied Environmental Microbiology*, 72(10):6789–6799. <http://dx.doi.org/10.1128/AEM.01238-06>
- Nercessian, O., Fouquet, Y., Pierre, C., Prieur, D., and Jeanthon, C., 2005. Diversity of bacteria and archaea associated with a carbonate-rich metaliferous sediment sample from the Rainbow vent field on the Mid-Atlantic Ridge. *Environmental Microbiology*, 7(5):608–714. <http://dx.doi.org/10.1111/j.1462-2920.2005.00744.x>
- Ohara, Y., Stern, R.J., Ishii, T., Yurimoto, H., and Yamazaki, T., 2002. Peridotites from the Mariana Trough: first look at the mantle beneath an active back-arc basin. *Contributions to Mineralogy and Petrology*, 143(1):1–18. <http://dx.doi.org/10.1007/s00410-001-0329-2>
- Ohara, Y., Yoshida, T., Kato, Y., and Kasuga, S., 2001. Giant megamullion in the Parece Vela backarc basin. *Marine Geophysical Research*, 22(1):47–61. <http://dx.doi.org/10.1023/A:1004818225642>
- Orphan, V.J., House, C.H., Hinrichs, K.-U., McKeegan, K.D., and DeLong, E.F., 2001. Methane-consuming archaea revealed by directly coupled isotopic and phylogenetic analysis. *Science*, 293(5529):484–487. <http://dx.doi.org/10.1126/science.1061338>
- Parkes, R.J., Webster, G., Cragg, B.A., Weightman, A.J., Newberry, C.J., Ferdelman, T.G., Kallmeyer, J., Jørgensen, B.B., Aiello, I.W., and Fry, J.C., 2005. Deep sub-seafloor prokaryotes stimulated at interfaces over geological time. *Nature*, 436(7049):390–394. <http://dx.doi.org/10.1038/nature03796>
- Perner, M., Kuever, J., Seifert, R., Pape, T., Koschinsky, A., Schmidt, K., Straus, H., and Imhoff, J.F., 2007. The influence of ultramafic rocks on microbial communities at the Logatchev hydrothermal field, located 15°N on the Mid-Atlantic Ridge. *FEMS Microbiology Ecology*, 61(1):97–109. <http://dx.doi.org/10.1111/j.1574-6941.2007.00325.x>

- Proskurowski, G., Lilley, M.D., and Brown, T.A., 2004. Isotopic evidence of magmatism and seawater bicarbonate removal at the Endeavour hydrothermal system. *Earth and Planetary Science Letters*, 225(1–2):53–61. <http://dx.doi.org/10.1016/j.epsl.2004.06.007>
- Proskurowski, G., Lilley, M.D., Kelley, D.S., and Olson, E.J., 2006. Low temperature volatile production at the Lost City hydrothermal field, evidence from a hydrogen stable isotope geothermometer. *Chemical Geology*, 229(4):331–343. <http://dx.doi.org/10.1016/j.chemgeo.2005.11.005>
- Proskurowski, G., Lilley, M.D., Seewald, J.S., Früh-Green, G.L., Olson, E.J., Lupton, J.E., Sylva, S.P., and Kelley, D.S., 2008. Abiogenic hydrocarbon production at Lost City hydrothermal field. *Science*, 319(5863):604–607. <http://dx.doi.org/10.1126/science.1151194>
- Reinen, L.A., Weeks, J.D., and Tullis, T.E., 1991. The frictional behavior of serpentinite: implications for aseismic creep on shallow crustal faults. *Geophysical Research Letters*, 18(10):1921–1924. <http://dx.doi.org/10.1029/91GL02367>
- Rona, P.A., Bougault, H., Charlou, J.L., Appriou, P., Nelsen, T.A., Trefry, J.H., Eberhart, G.L., Barone, A., and Needham, H.D., 1992. Hydrothermal circulation, serpentinization, and degassing at a rift valley-fracture zone intersection: Mid-Atlantic Ridge near 15°N, 45°W. *Geology*, 20(9):783–786. [http://dx.doi.org/10.1130/0091-7613\(1992\)020<0783:HCSADA>2.3.CO;2](http://dx.doi.org/10.1130/0091-7613(1992)020<0783:HCSADA>2.3.CO;2)
- Rona, P.A., Hannington, M.D., Raman, C.V., Thompson, G., Tivey, M.K., Humphris, S.E., Lalou, C., and Petersen, S., 1993. Active and relict seafloor hydrothermal mineralization at the TAG hydrothermal field, Mid-Atlantic Ridge. *Economic Geology*, 88(8):1989–2013. <http://dx.doi.org/10.2113/gsecongeo.88.8.1989>
- Russell, M.J., 2003. The importance of being alkaline. *Science*, 302(5645):580–581. <http://dx.doi.org/10.1126/science.1091765>
- Sagalevich, A.M., Vinogradov, G.M., Gurchich, E.G., Lein, A.Y., Lukashin, V.N., and Chernyaev, E.S., 2000. Investigations in the Titanic study area and the Rainbow hydrothermal field in Cruise 42 of the research vessel *Akademik Mstislav Keldysh*. *Oceanology*, 40:439–446.
- Schrenk, M.O., Kelley, D.S., Bolton, S.A., and Baross, J.A., 2004. Low archaeal diversity linked to seafloor geochemical processes at the Lost City hydrothermal field, Mid-Atlantic Ridge. *Environmental Microbiology*, 6:1086–1095. <http://dx.doi.org/10.1111/j.1462-2920.2004.00650.x>
- Schroeder, T., John, B., and Frost, B.R., 2002. Geologic implications of seawater circulation through peridotite exposed at slow-spreading mid-ocean ridges. *Geology*, 30(4):367–370. [http://dx.doi.org/10.1130/0091-7613\(2002\)030<0367:GIOSCT>2.0.CO;2](http://dx.doi.org/10.1130/0091-7613(2002)030<0367:GIOSCT>2.0.CO;2)
- Schroeder, T., and John, B.E., 2004. Strain localization on an oceanic detachment fault system, Atlantis Massif, 30°N, Mid-Atlantic Ridge. *Geochemistry, Geophysics, Geosystems*, 5:Q11007. <http://dx.doi.org/10.1029/2004GC000728>
- Scruggs, V.J., 1997. Frictional constitutive properties and related microstructures of albite, muscovite, biotite and talc [Ph.D. dissert.]. Brown University, Providence, Rhode Island.
- Shipboard Scientific Party, 2003. Leg 201 summary. In D'Hondt, S.L., Jørgensen, B.B., Miller, D.J., et al., *Proceedings of the Ocean Drilling Program, Initial Reports*, 201: College Station, TX (Ocean Drilling Program), 1–81. <http://dx.doi.org/10.2973/odp.proc.ir.201.101.2003>
- Shock, E.L., and Schulte, M.D., 1998. Organic synthesis during fluid mixing in hydrothermal systems. *Journal of Geophysical Research: Planets*, 103(E12):28513–28527. <http://dx.doi.org/10.1029/98JE02142>
- Sleep, N.H., Meibom, A., Fridriksson, T., Coleman, R.G., and Bird, D.K., 2004. H₂-rich fluids from serpentinization: geochemical and biotic implications. *Proceedings of the National Academy of Sciences of the United States of America*, 101(35):12818–12823. <http://dx.doi.org/10.1073/pnas.0405289101>
- Smith, D.K., Cann, J.R., and Escartin, J., 2006. Widespread active detachment faulting and core complex formation near 13°N on the Mid-Atlantic Ridge. *Nature*, 442(7101):440–443. <http://dx.doi.org/10.1038/nature04950>
- Smith, D.K., Escartin, J., Schouten, H., and Cann, J.R., 2008. Fault rotation and core complex formation: significant processes in seafloor formation at slow-spreading mid-ocean ridges (Mid-Atlantic Ridge, 13°–15°N). *Geochemistry, Geophysics, Geosystems*, 9(3):Q03003. <http://dx.doi.org/10.1029/2007GC001699>
- Summit, M., and Baross, J.A., 2001. A novel microbial habitat in the mid-ocean ridge seafloor. *Proceedings of the National Academy of Sciences of the United States of America*, 98(5):2158–2163. <http://dx.doi.org/10.1073/pnas.051516098>
- Szatmari, P., 1989. Petroleum formation by Fischer-Tropsch synthesis in plate tectonics. *AAPG Bulletin*, 73(8):989–998. <http://dx.doi.org/10.1306/44B4A2CB-170A-11D7-8645000102C1865D>
- Takai, K., Gamo, T., Tsunogai, U., Nakayama, N., Hirayama, H., Nealson, K.H., and Horikoshi, K., 2004. Geochemical and microbiological evidence for a hydrogen-based, hyperthermophilic subsurface lithoautotrophic microbial ecosystem (HyperSLiME) beneath an active deep-sea hydrothermal field. *Extremophiles*, 8(4):269–282. <http://dx.doi.org/10.1007/s00792-004-0386-3>
- Tucholke, B.E., Behn, M.D., Buck, W.R., and Lin, J., 2008. Role of melt supply in oceanic detachment faulting and formation of megamullions. *Geology*, 36(6):455–458. <http://dx.doi.org/10.1130/G24639A.1>
- Wheat, C.G., and Fisher, A.T., 2008. Massive, low-temperature hydrothermal flow from a basaltic outcrop on 23 Ma seafloor of the Cocos plate: chemical constraints and implications. *Geochemistry, Geophysics, Geosystems*, 9(12):Q12014. <http://dx.doi.org/10.1029/2008GC002136>
- Wheat, C.G., Jannasch, H.W., Kastner, M., Plant, J.N., and DeCarlo, E.H., 2003. Seawater transport and reaction in upper oceanic basaltic basement: chemical data from continuous monitoring of sealed boreholes in a ridge flank environment. *Earth and Planetary Science Letters*, 216(4):549–564. [http://dx.doi.org/10.1016/S0012-821X\(03\)00549-1](http://dx.doi.org/10.1016/S0012-821X(03)00549-1)

Table T1. Operations summary, Expedition 357.

Hole	Proposed site	Date coring operations commenced (Nov 2015)	Latitude	Longitude	Water depth (m)	Drill	Number of cores	Interval cored (m)	Core recovered (m)	Core recovery (%)	Interval open-holed (m)	Penetration depth (mbsf)	Time on site (days)
M0068A	AM-02A	5	30°7.49'N	42°5.74'W	1102.7	RD2	1	1.97	0.47	23.9	0	1.97	0.41
M0068B	AM-02A	23	30°7.51'N	42°5.75'W	1102.0	RD2	10	9.60	6.34	66.04	0	9.60	1.95
M0069A	AM-06A	6	30°7.94'N	42°7.20'W	850.9	RD2	10	16.44	12.29	75	0	16.44	2.04
M0070A	AM-07A	8	30°8.55'N	42°8.19'W	1140.5	MeBo	3	4.00	2.09	52.25	0	4.00	0.94
M0070B	AM-07A	14	30°8.54'N	42°8.16'W	1140.5	RD2	1	1.30	0.38	29.23	0	1.30	0.22
M0070C	AM-07A	22	30°8.54'N	42°8.19'W	1140.5	MeBo	3	5.21	2.21	42.42	0	5.21	1.3
M0071A	AM-04A	9	30°7.71'N	42°9.20'W	1390.8	MeBo	2	5.22	2.85	54.6	0	5.22	0.75
M0071B	AM-04A	18	30°7.72'N	42°9.19'W	1380.0	RD2	3	4.30	2.31	53.62	0	4.30	1.1
M0071C	AM-04A	25	30°7.70'N	42°9.21'W	1390.0	MeBo	9	12.15	4.44	30.29	0	12.15	2.6
M0072A	AM-01A	10	30°7.79'N	42°7.32'W	820.3	RD2	2	2.23	0.87	39.1	0	2.23	0.39
M0072B	AM-01A	10	30°7.79'N	42°7.32'W	820.3	RD2	8	11.61	6.49	52.3	0.825	12.43	1.69
M0073A	AM-05A	14	30°7.90'N	42°10.97'W	1430.2	MeBo	1	2.20	0	0	0	2.20	0.44
M0074A	AM-09A	30	30°9.87'N	42°7.32'W	1550.0	MeBo	1	2.68	0.86	32.09	0	2.50	0.23
M0075A	AM-03A	28	30°7.67'N	42°3.98'W	1568.0	RD2	1	1.72	0.65	37.79	0	1.72	0.57
M0075B	AM-03A	29	30°7.65'N	42°3.97'W	1568.0	RD2	3	5.70	2.73	47.88	0	5.70	1.1
M0076A	AM-11A	15	30°7.62'N	42°7.08'W	768.0	RD2	1	1.72	0.4	23.26	0	1.72	0.24
M0076B	AM-11A	16	30°7.62'N	42°7.07'W	768.0	RD2	10	16.31	11.71	71	0	16.31	2.13

Table T2. Distances (in kilometers) between holes, Expedition 357.

	Hole M0068A	Hole M0068B	Hole M0069A	Hole M0070A	Hole M0070B	Hole M0070C	Hole M0071A	Hole M0071B	Hole M0071C	Hole M0072A	Hole M0072B	Hole M0073A	Hole M0074A	Hole M0075A	Hole M0075B	Hole M0076A	Hole M0076B
Hole M0068A	X	0.03	2.48	4.38	4.34	4.39	5.55	5.54	5.564	2.59	2.62	8.41	5.07	2.94	2.86	2.15	2.13
Hole M0068B	—	X	2.47	4.37	4.32	4.37	5.55	5.53	5.56	2.58	2.61	8.40	5.04	2.94	2.86	2.14	2.12
Hole M0069A	—	—	X	1.94	1.89	1.94	3.23	3.21	3.24	0.34	0.35	6.04	3.57	5.28	5.21	0.63	0.64
Hole M0070A	—	—	—	X	0.05	0.02	2.25	2.23	2.27	1.98	1.96	4.62	2.81	7.03	6.96	2.48	2.49
Hole M0070B	—	—	—	—	X	0.05	2.26	2.24	2.28	1.93	1.91	4.65	2.81	6.98	6.92	2.43	2.45
Hole M0070C	—	—	—	—	—	X	2.24	2.21	2.25	1.97	1.95	4.61	2.82	7.03	6.97	2.48	2.49
Hole M0071A	—	—	—	—	—	—	X	0.02	0.02	3.01	2.98	2.86	5.01	8.46	8.38	3.41	3.42
Hole M0071B	—	—	—	—	—	—	—	X	0.04	2.99	2.97	2.88	4.99	8.44	8.36	3.39	3.41
Hole M0071C	—	—	—	—	—	—	—	—	X	3.02	3.00	2.85	5.03	8.47	8.39	3.42	3.44
Hole M0072A	—	—	—	—	—	—	—	—	—	X	0.03	5.85	3.84	5.45	5.38	0.50	0.52
Hole M0072B	—	—	—	—	—	—	—	—	—	—	X	5.82	3.84	5.48	5.41	0.53	0.54
Hole M0073A	—	—	—	—	—	—	—	—	—	—	—	X	6.90	11.30	11.23	6.26	6.28
Hole M0074A	—	—	—	—	—	—	—	—	—	—	—	—	X	6.78	6.75	4.17	4.18
Hole M0075A	—	—	—	—	—	—	—	—	—	—	—	—	—	X	0.09	5.055	5.04
Hole M0075B	—	—	—	—	—	—	—	—	—	—	—	—	—	—	X	4.98	4.96
Hole M0076A	—	—	—	—	—	—	—	—	—	—	—	—	—	—	—	X	0.02
Hole M0076B	—	—	—	—	—	—	—	—	—	—	—	—	—	—	—	—	X

Table T3. Summary of measurements, Expedition 357. MSCL = multisensor core logger, PFC = perfluorocarbon, DIC = dissolved inorganic carbon, DOC = dissolved organic carbon, POC = particulate organic carbon, GC = gas chromatograph, OAG = optical acoustic gamma. IW = interstitial water, ICP-OES = inductively coupled plasma–optical emission spectrometry, IC = ion chromatography, TOC = total organic carbon, TC = total carbon, TS = total sulfur, LECO = carbon/sulfur analyzer.

RRS <i>James Cook</i> , offshore Atlantis Massif	Onshore science party, BCR
Through-liner core description	Natural gamma radiation
Whole-core MSCL logging (fast and slow tracks): density, velocity, magnetic susceptibility, electrical resistivity	Core description (through liner and on split archive halves)
PFC contamination tracer concentration determination	Thin section description
Microbiology cell counts (by fluorescent microscope)	IW analysis by ICP-OES (major and trace elements) and IC (chloride, bromide, sulfate, and nitrate) and sediment TOC, TC, and TS by LECO
pH by ion-specific electrode; alkalinity by single-point titration to pH; salinity by refractometer; ammonium by flow injection method; methane and hydrogen by GC	pH/alkalinity calibration measurements
Microbiology whole-round core photography	High-resolution continuous digital line scanning (360° through liner, wet and dry on split working and archive halves)
Downhole logging (through-pipe OAG)	Discrete sample moisture and density properties
In situ sensor measurement of dissolved gas, pH, and temperature	Discrete sample magnetic susceptibility and paleomagnetic measurements
	Handheld color reflectance of split core surfaces
	Discrete P-wave velocity measurements

Table T4. Sensor package (SP) Niskin bottles sampled for fluid chemistry, gas chemistry, and microbiology, Expedition 357. RD2 Niskins 1 and 2 were connected to tubing and fed water via a pump from close to the breakout table; Niskin 3 was not connected to tubing and was situated approximately 0.8 m above the seafloor. MeBo Niskins 2 and 3 were connected to the tubing and pump; Niskin 1 was not connected and was situated approximately 1.5 m above the seafloor. Start and end dates refer to drill deployment and recovery. Niskin trigger times are when the bottles on the sensor package were fired. Times are local (GMT – 2h). COD = closed on deck; bottles triggered but did not fire; water remained in the two Niskins connected to the pump; Niskins were capped ~40 min after arrival on deck (Hole M0069A) or immediately upon arrival on deck (Hole M0070B). DNF = did not fire; bottles triggered but did not fire.

Drill hole ID	Rock drill	Device	Site depth (m)	Start date (2015)	End date (2015)	Niskin trigger time	Latitude	Longitude
M0068A	RD2	SP Niskin 1, pumped	1102.7	6 Nov	6 Nov	0800	30°7.49'N	42°5.74'W
M0068A	RD2	SP Niskin 2, pumped	1102.7	6 Nov	6 Nov	0800	30°7.49'N	42°5.74'W
M0068B	RD2	SP Niskin 1, pumped	1102.0	23 Nov	25 Nov	0903	30°7.51'N	42°5.75'W
M0068B	RD2	SP Niskin 2, pumped	1102.0	23 Nov	25 Nov	0902	30°7.51'N	42°5.75'W
M0068B	RD2	SP Niskin 3, not pumped	1102.0	23 Nov	25 Nov	0903	30°7.51'N	42°5.75'W
M0069A	RD2	SP Niskin 1, pumped	850.9	6 Nov	8 Nov	COD	30°7.94'N	42°7.20'W
M0069A	RD2	SP Niskin 2, pumped	850.9	6 Nov	8 Nov	COD	30°7.94'N	42°7.20'W
M0070A	MeBo	SP Niskin 1, not pumped	1140.5	8 Nov	9 Nov	0245	30°8.55'N	42°8.19'W
M0070A	MeBo	SP Niskin 2, pumped	1140.5	8 Nov	9 Nov	0245	30°8.55'N	42°8.19'W
M0070A	MeBo	SP Niskin 3, pumped	1140.5	8 Nov	9 Nov	0245	30°8.55'N	42°8.19'W
M0070B	RD2	SP Niskin 1, pumped	1140.5	14 Nov	14 Nov	COD	30°8.54'N	42°8.16'W
M0070B	RD2	SP Niskin 2, pumped			14 Nov	COD	30°8.54'N	42°8.16'W
M0071A	MeBo	SP Niskin 1, not pumped	1390.8	9 Nov	10 Nov	0245	30°7.71'N	42°9.20'W
M0071A	MeBo	SP Niskin 2, pumped	1390.8	9 Nov	10 Nov	0245	30°7.71'N	42°9.20'W
M0071A	MeBo	SP Niskin 3, pumped	1390.8	9 Nov	10 Nov	0245	30°7.71'N	42°9.20'W
M0071B	RD2	SP Niskin 1, pumped	1390.8	18 Nov	19 Nov	0841	30°7.72'N	42°9.19'W
M0071B	RD2	SP Niskin 2, pumped	1390.8	18 Nov	19 Nov	0816	30°7.72'N	42°9.19'W
M0071B	RD2	SP Niskin 3, not pumped	1390.8	18 Nov	19 Nov	0841	30°7.72'N	42°9.19'W
M0071C	MeBo	SP Niskin 1, not pumped	1390.0	25 Nov	28 Nov	0050	30°7.70'N	42°9.21'W
M0071C	MeBo	SP Niskin 2, pumped	1390.0	25 Nov	28 Nov	0050	30°7.70'N	42°9.21'W
M0071C	MeBo	SP Niskin 3, pumped	1390.0	25 Nov	28 Nov	0050	30°7.70'N	42°9.21'W
M0072A	RD2	SP Niskin 1, pumped	820.3	10 Nov	10 Nov	1503	30°7.79'N	42°7.32'W
M0072A	RD2	SP Niskin 2, pumped	820.3	10 Nov	10 Nov	1501	30°7.79'N	42°7.32'W
M0072A	RD2	SP Niskin 3, not pumped	820.3	10 Nov	10 Nov	1503	30°7.79'N	42°7.32'W
M0072B	RD2	SP Niskin 1, pumped	820.3	10 Nov	12 Nov	0625	30°7.79'N	42°7.32'W
M0072B	RD2	SP Niskin 2, pumped	820.3	10 Nov	12 Nov	0625	30°7.79'N	42°7.32'W
M0072B	RD2	SP Niskin 3, not pumped	820.3	10 Nov	12 Nov	0625	30°7.79'N	42°7.32'W
M0073A	MeBo	SP Niskin 1, not pumped	1430.2	15 Nov	15 Nov	0630	30°7.90'N	42°10.97'W
M0074A	MeBo	SP Niskin 1, not pumped	1550.0	30 Nov	30 Nov	1328	30°9.87'N	42°7.32'W
M0075A	MeBo	No water collected	1585.6	14 Nov	14 Nov	DNF	30°7.66'N	42°3.91'W
M0075A	RD2	SP Niskin 1, pumped	1568.0	28 Nov	29 Nov	1407	30°7.67'N	42°3.98'W
M0075A	RD2	SP Niskin 2, pumped	1568.0	28 Nov	29 Nov	1406	30°7.67'N	42°3.98'W
M0075A	RD2	SP Niskin 3, not pumped	1568.0	28 Nov	29 Nov	1406	30°7.67'N	42°3.98'W
M0075B	MeBo	SP Niskin 1, not pumped	1568.0	29 Nov	30 Nov	0615	30°7.65'N	42°3.97'W
M0075B	MeBo	SP Niskin 2, pumped	1568.0	29 Nov	30 Nov	0614	30°7.65'N	42°3.97'W
M0075B	MeBo	SP Niskin 3, pumped	1568.0	29 Nov	30 Nov	0614	30°7.65'N	42°3.97'W
M0076A	RD2	No water collected	768.0	15 Nov	15 Nov	DNF	30°7.62'N	42°7.08'W
M0076B	RD2	SP Niskin 1, pumped	768.0	15 Nov	17 Nov	1531	30°7.62'N	42°7.07'W
M0076B	RD2	SP Niskin 2, pumped	768.0	15 Nov	17 Nov	1243	30°7.62'N	42°7.07'W
M0076B	RD2	SP Niskin 3, not pumped	768.0	15 Nov	17 Nov	1531	30°7.62'N	42°7.07'W

Table T5. CTD rosette cast locations, depths, and associated drill holes, Expedition 357.

Cast <i>N</i>	Hole	Bottle <i>N</i>	Site depth (m)	Date (2015)	Latitude	Longitude	Sample depth (m)	Altimeter (m)
JC130_001	M0068A	1, 5, 9	1001	6 Nov	30°7.51'N	42°5.75'W	1099	2.2
JC130_001	M0068A	13	1001	6 Nov	30°7.95'N	42°5.75'W	763	
JC130_001	M0068A	17	1001	6 Nov	30°7.95'N	42°5.75'W	385	
JC130_001	M0068A	21	1001	6 Nov	30°7.95'N	42°5.75'W	8	
JC130_002	M0069A	1, 5, 9	849	6 Nov	30°7.98'N	42°7.22'W	848	1.7–3.0
JC130_002	M0069A	13	849	6 Nov	30°7.98'N	42°7.22'W	583	
JC130_002	M0069A	17	849	6 Nov	30°7.98'N	42°7.22'W	293	
JC130_002	M0069A	21	849	6 Nov	30°7.98'N	42°7.22'W	11	
JC130_003	M0069A	1	851	8 Nov	30°7.95'N	42°7.20'W	848	2.1–2.7
JC130_003	M0069A	9	851	8 Nov	30°7.95'N	42°7.20'W	848	2.1–2.7
JC130_003	M0069A	13	851	8 Nov	30°7.95'N	42°7.20'W	848	2.1–2.7
JC130_004	M0070A	1, 5, 9	1140	8 Nov	30°8.54'N	42°8.20'W	1138	1.7
JC130_004	M0070A	13	1140	8 Nov	30°8.54'N	42°8.20'W	760	
JC130_004	M0070A	17	1140	8 Nov	30°8.54'N	42°8.20'W	380	
JC130_004	M0070A	21	1140	8 Nov	30°8.54'N	42°8.20'W	5	
JC130_005	M0071A	1, 5, 9	1384	9 Nov	30°7.69'N	42°9.21'W	1387	2.2
JC130_005	M0071A	13	1384	9 Nov	30°7.69'N	42°9.21'W	902	
JC130_005	M0071A	17	1384	9 Nov	30°7.69'N	42°9.21'W	454	
JC130_005	M0071A	21	1384	9 Nov	30°7.69'N	42°9.21'W	6	
JC130_006	M0072A	1, 5, 9	826	10 Nov	30°7.79'N	42°7.34'W	818	1.8–2.3
JC130_006	M0072A	13	826	10 Nov	30°7.79'N	42°7.34'W	482	
JC130_006	M0072A	17	826	10 Nov	30°7.79'N	42°7.34'W	243	
JC130_006	M0072A	21	826	10 Nov	30°7.79'N	42°7.34'W	4	
JC130_007	M0072X	1	4244	11 Nov	30°2.01'N	42°6.94'W	4134	
JC130_007	M0072X	5	4244	11 Nov	30°2.01'N	42°6.94'W	4135	
JC130_007	M0072X	9	4244	11 Nov	30°2.01'N	42°6.94'W	1601	
JC130_007	M0072X	17	4244	11 Nov	30°2.01'N	42°6.94'W	755	
JC130_008	M0073A	1, 5, 9	1432	12 Nov	30°7.87'N	42°10.95'W	1428	1.5–1.8
JC130_008	M0073A	13	1432	12 Nov	30°7.87'N	42°10.95'W	960	
JC130_008	M0073A	17	1432	12 Nov	30°7.87'N	42°10.95'W	482	
JC130_008	M0073A	21	1432	12 Nov	30°7.87'N	42°10.95'W	4	
JC130_009	M0074A	1, 5	1550	13 Nov	30°09.85'N	42°07.29'W	1550	1.3
JC130_009	M0074A	9	1550	13 Nov	30°09.85'N	42°07.29'W	1041	
JC130_009	M0074A	13	1550	13 Nov	30°09.85'N	42°07.29'W	752	
JC130_009	M0074A	17	1550	13 Nov	30°09.85'N	42°07.29'W	523	
JC130_009	M0074A	21	1550	13 Nov	30°09.85'N	42°07.29'W	6	
JC130_010	M0075A	1, 5, 9	1572	14 Nov	30°7.67'N	42°3.91'W	1581	2.3–4.5
JC130_010	M0075A	13	1572	14 Nov	30°7.67'N	42°3.91'W	1061	
JC130_010	M0075A	17	1572	14 Nov	30°7.67'N	42°3.91'W	534	
JC130_010	M0075A	21	1572	14 Nov	30°7.67'N	42°3.91'W	7	
JC130_11	M0075X	1, 5	4217	14 Nov	30°6.49'N	41°59.87'W	4221	2.0
JC130_11	M0075X	9, 13	4217	14 Nov	30°6.49'N	41°59.87'W	4124	
JC130_11	M0075X	17, 21	4217	14 Nov	30°6.49'N	41°59.87'W	4023	
JC130_12	M0075Z	1, 5	821	1 Dec	30°7.44'N	42°7.16'W	807	
JC130_12	M0075Z	9, 13	821	1 Dec	30°7.44'N	42°7.16'W	802	
JC130_12	M0075Z	17, 21	821	1 Dec	30°7.44'N	42°7.16'W	797	

Table T6. Magnetic susceptibility Kappa values and demagnetized inclinations measured on discrete samples, Expedition 357. ND = not determined.

Hole, core, section, interval (cm)	κ (SI)	Inclination (°)
Eastern sites		
M0068A-1R-1, 27.5	0.01380	-3.7
M0068B-1R-1, 129.5	0.00520	-4.4
M0068B-2R-1, 25	0.01265	-3.3
M0068B-4R-1, 28	0.04470	-3.2
M0075B-3R-1, 78	0.00386	ND
Central sites		
M0069A-5R-1, 104	0.00065	-45.7
M0069A-8R-1, 112	0.00065	ND
M0069A-10R-10, 82	0.03386	-41.9
M0072B-8R-1, 28	0.01344	-57.6
M0076B-6R-1, 123.5	0.03706	-49.1
M0076B-8R-1, 87.5	0.01629	-40.8
Western sites		
M0071A-1R-CC, 1.5	0.07780	39.0
M0071A-1R-1, 21	0.05595	57.7
M0071A-2R-1, 54	0.00031	57.3
M0071C-6R-1, 16.5	0.00063	-56.9

Figure F1. A. Conceptual sketch of lithospheric accretion and the tectonomagmatic evolution of a heterogeneous lithosphere and denudation of mantle rocks as detachment faulting progresses and oceanic core complexes are formed at slow-spreading ridges (from 2010 AGU Chapman Conference Report "Detachments in oceanic lithosphere: deformation, magmatism, fluid flow, and ecosystems," available at <http://2010chapman.blogspot.fr>). B. Example from Atlantis Massif: the southern wall is dominated by variably altered peridotites with gabbroic lenses (modified after Boschi et al., 2006) in contrast to (C) major gabbroic intrusions in the central dome (Grimes et al., 2008; copyright 2008 by the American Geophysical Union).

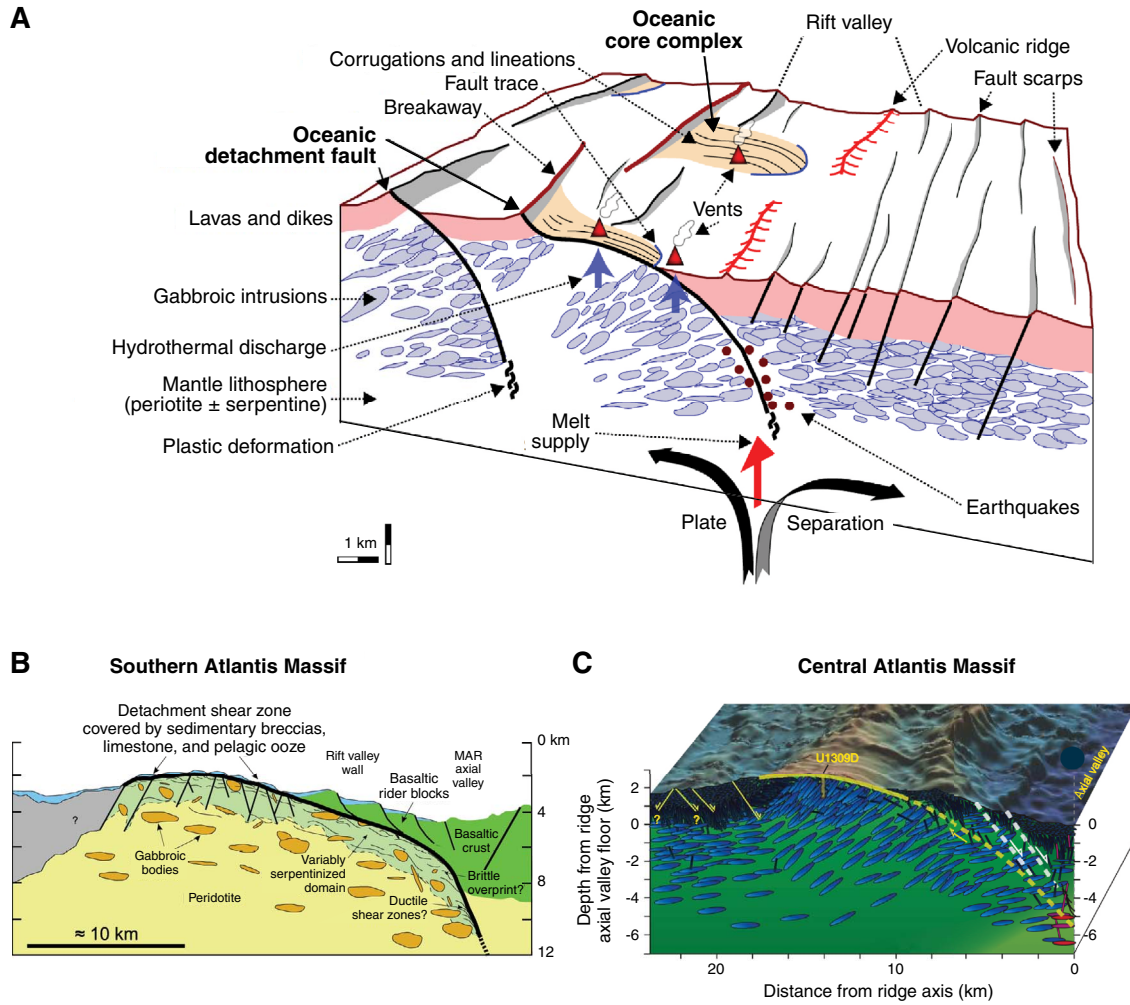


Figure F2. Location of cored sites (RD2 and MeBo) overlain on multibeam bathymetry acquired during Expedition 357 (multibeam resolution = 50 m). Cored sites from Expedition 304/305 and proposed Expedition 357 that were not drilled are also shown.

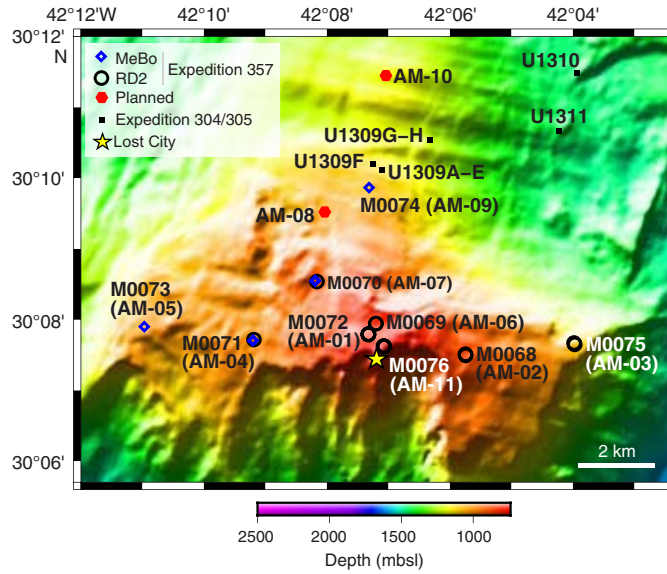


Figure F3. Field relations in the target area along the Atlantis Massif southern wall. A. Sedimentary cap sequences overlie the detachment fault zone (consisting of variably thick zones of talc-amphibole schists within mylonitic and serpentinized peridotites) (Boschi et al., 2006; Karson et al., 2006). B. These sequences underlie hydrothermal deposits in the vicinity of the LCHF and overlie the detachment shear zone (DSZ) (Karson et al., 2006; copyright 2006 by the American Geophysical Union). C. Above the LCHF, cap sediments are cut by hydrothermal carbonates. D. These carbonates are locally venting diffuse fluids and have microbial filaments. Images captured by the ROV *Hercules* (2005), courtesy of the National Oceanic and Atmospheric Administration (NOAA)'s Office of Ocean Exploration, the University of Washington, and the Institute for Exploration at the University of Rhode Island.

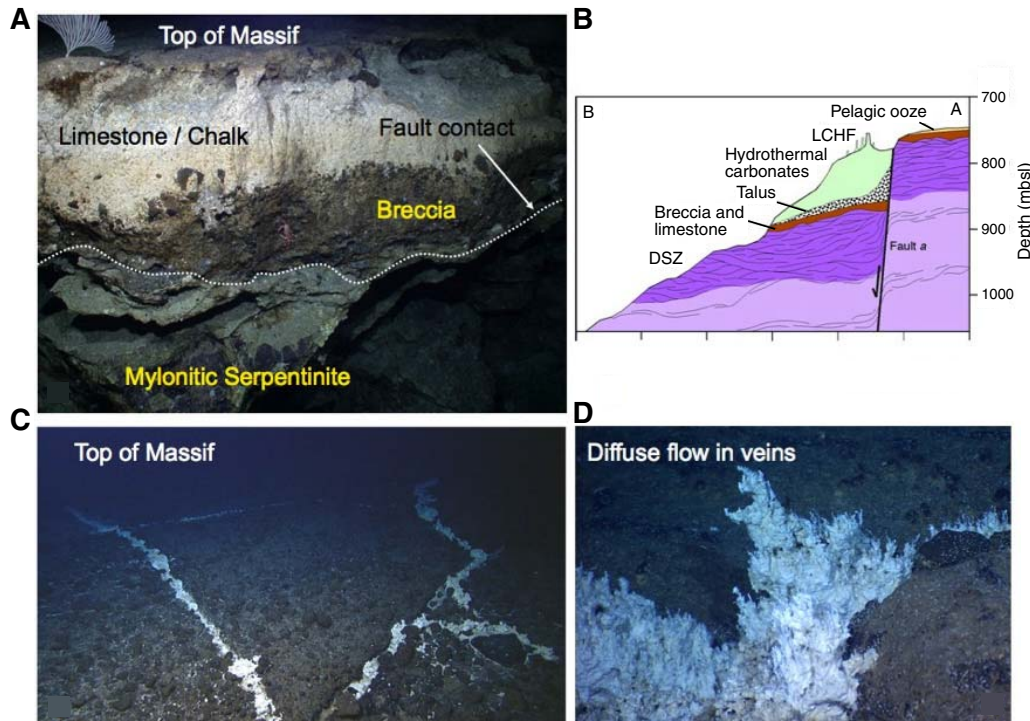


Figure F4. Seabed rock drills deployed from the *RRS James Cook*, Expedition 357. Top = MeBo, bottom = RD2. Images courtesy of Dave Smith (BGS).

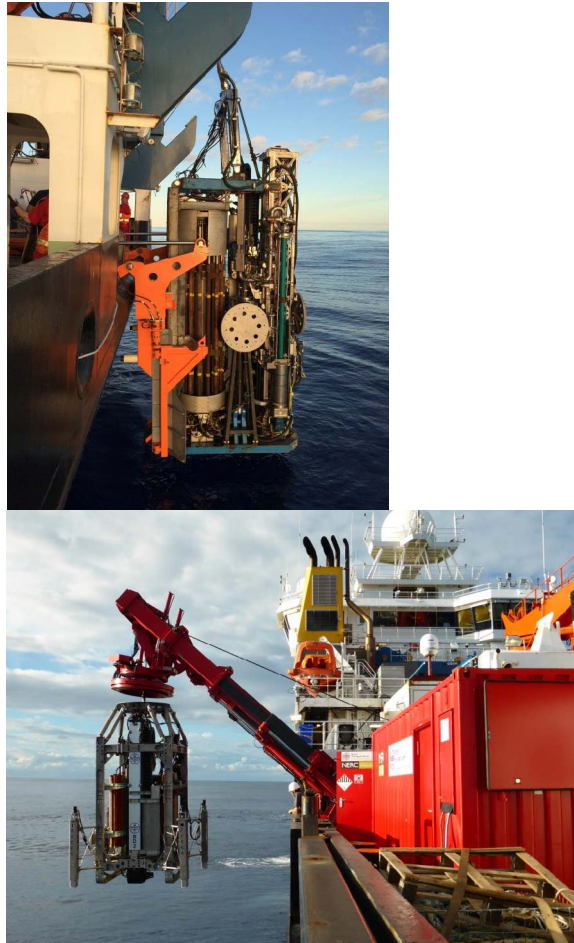


Figure F5. Multibeam image of Atlantis Massif data set acquired at 20 m per pixel resolution acquired during Expedition 357.

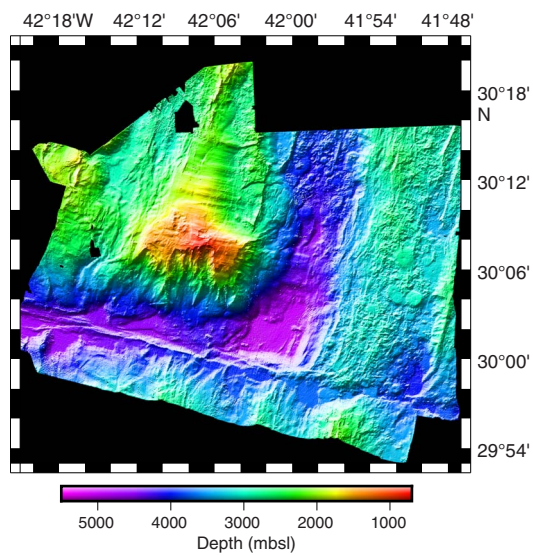


Figure F6. Multibeam bathymetry of Atlantis Massif acquired at 50 m per pixel resolution (top left), corresponding slope map (top right), and structural and morphological interpretation (bottom).

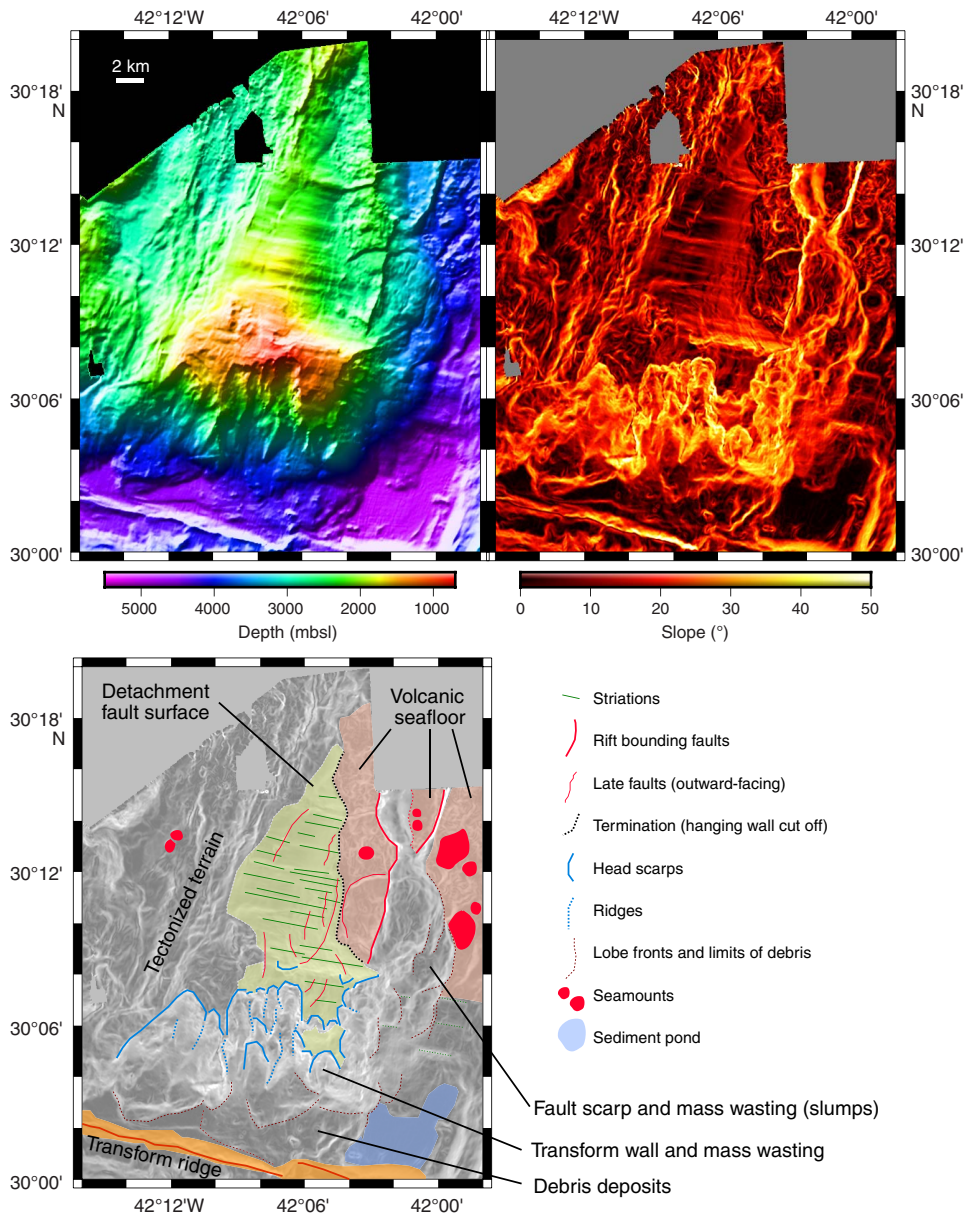


Figure F7. 3-D terrain model of Atlantis Massif with (top) a lateral view west of its eastern flank, (center) a lateral view of its southern flank showing extensive mass wasting, and (bottom) a northward view of the detachment fault surface showing striations and cross-cutting tectonic structures. Terrain model resolution = 50 m per pixel (top and center) and 20 m per pixel (bottom). See Figure F6 for scale on maps of the area, as scaling in 3-D views is variable owing to perspective.

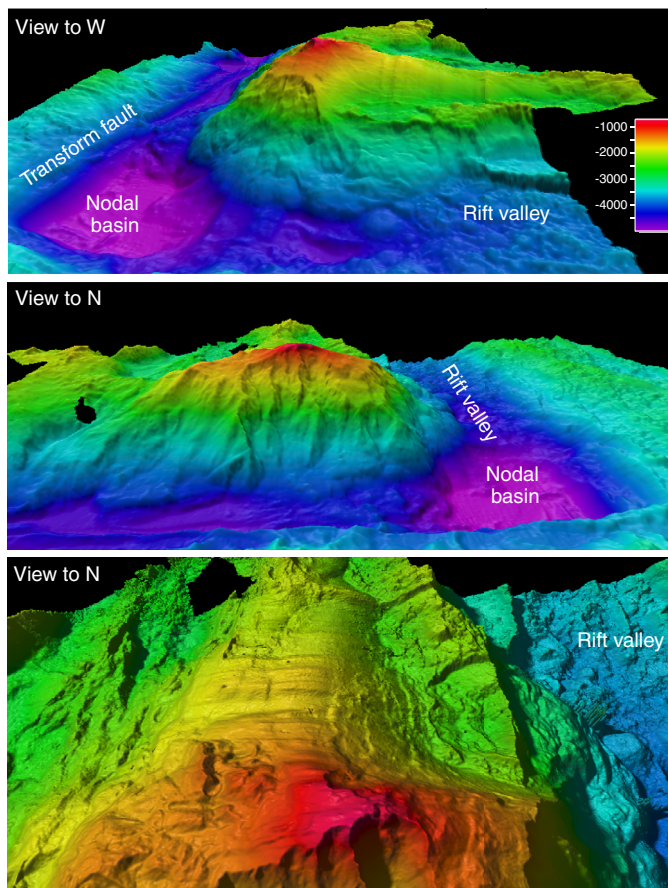


Figure F8. Cross-axis profiles over Atlantis Massif and the adjacent rift valley with projected locations of Expedition 357 sites. The southernmost profile (red) runs along the southern sites, the black profile runs over Site M0074, and the blue profile runs close to Hole U1309D, which was drilled to >1500 mbsf.

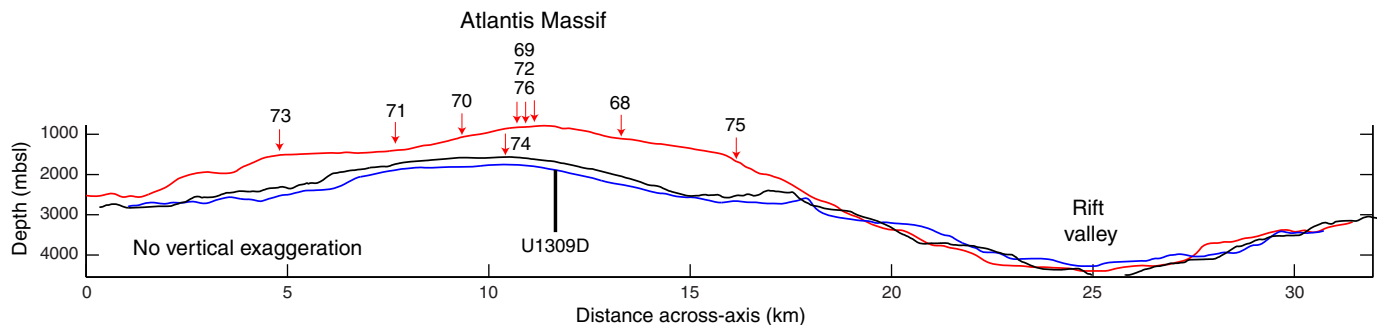


Figure F9. Lithologic variations, Expedition 357. Pie charts show percentages of dominant lithologies recovered from each drilled site based on integrated core length and are plotted against a bathymetry profile of the Atlantis Massif southern wall.

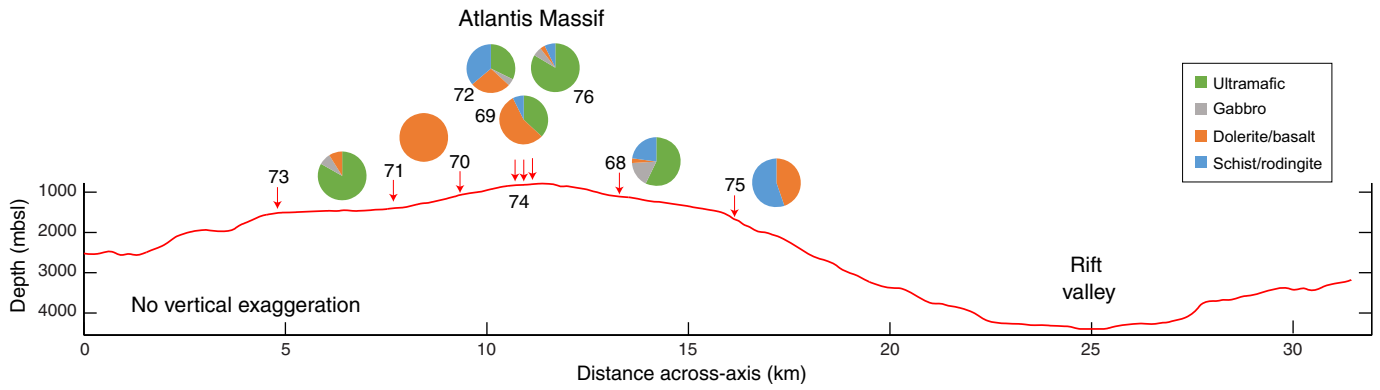


Figure F10. Recovery and described lithology for all sites, Expedition 357.

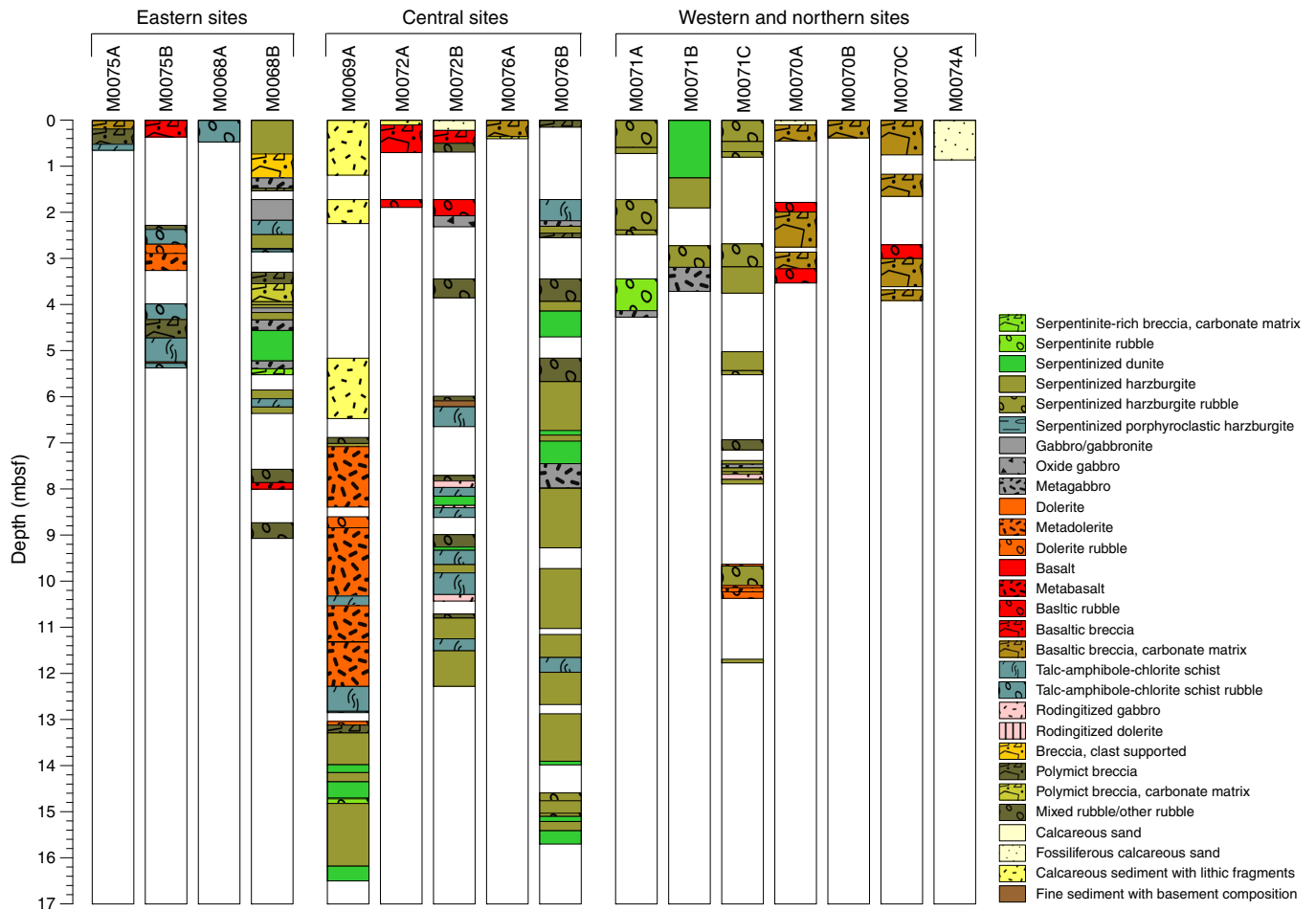


Figure F11. Porosity and grain density from all study areas, Expedition 357.

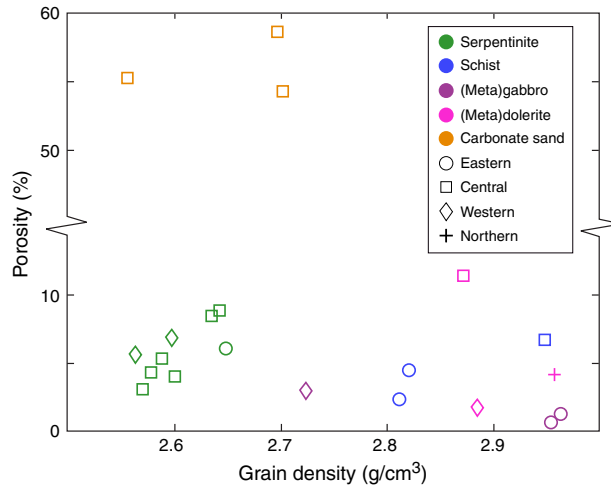


Figure F12. Porosity (from moisture and density analyses) and mean (X-, Y-, and Z-direction) P-wave measurements from all study areas, Expedition 357. Bars = minimum and maximum mean velocities. It was not possible to measure all three orthogonal directions for all samples.

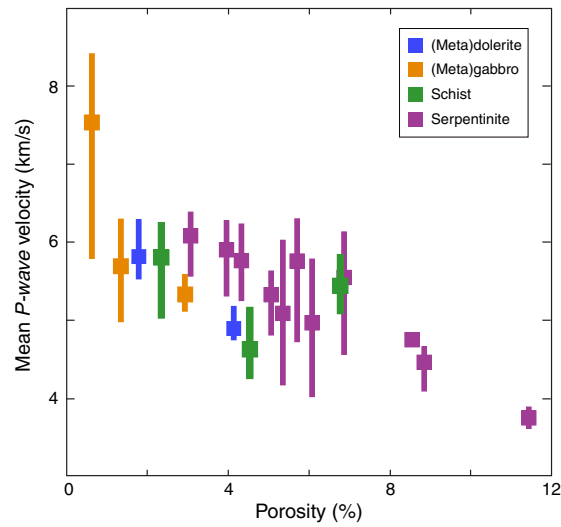


Figure F13. Demagnetized inclinations vs. magnetic susceptibility for 13 discrete samples, Expedition 357. Red lines = expected inclination of $\pm 49^\circ$.

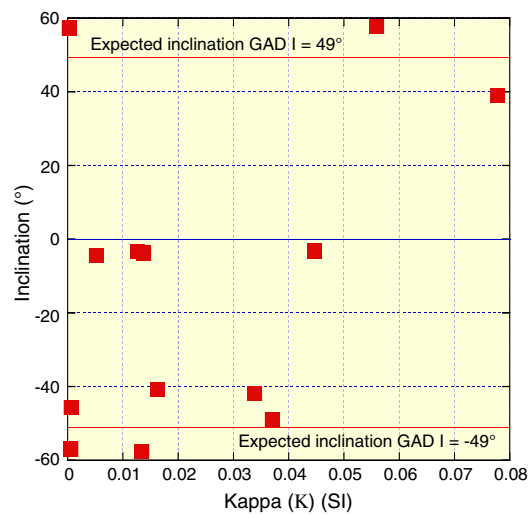


Figure F14. Declination and inclination from discrete samples ($N = 13$) after alternating field demagnetization up to 100 mT, Expedition 357. Solid blue squares = samples with normal polarity NRM (positive inclinations), open red squares = samples with reversed NRM (negative inclinations). Magenta circles = GAD predictions for the highest (inner) and lowest (outer) site latitudes drilled.

