

Sampling Sites



Figure 1: Sites used to classify the Kirkwall water body for macro invertebrates.



Figure 2: Sites used to classify Scapa Flow water body for macro invertebrates.



Figure 3: Sites used to classify Stonehaven (Souter Head to Garron Point) for macro invertebrates.

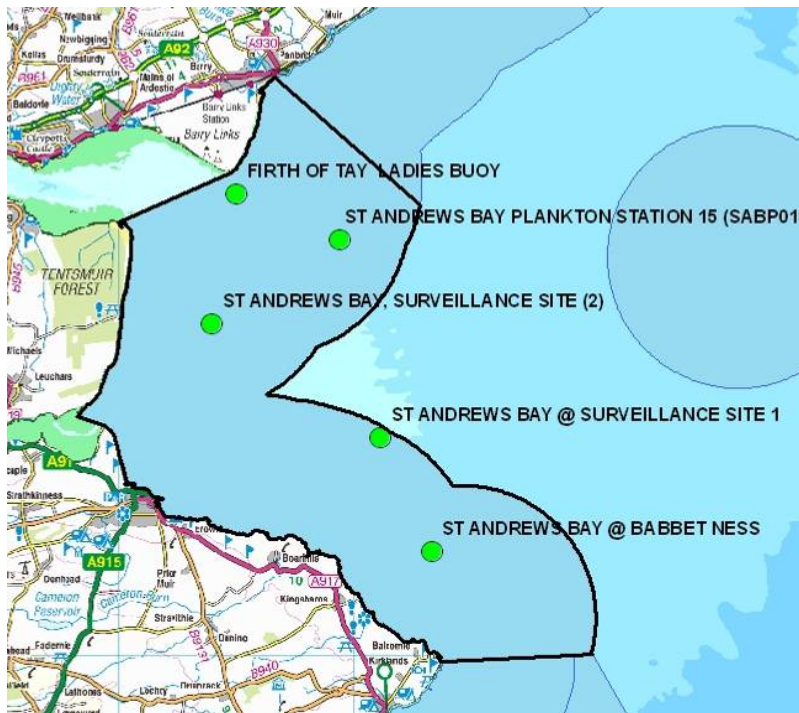


Figure 4: Sites used to classify St. Andrews Bay (Carnoustie to Fife Ness) for macro invertebrates.



Figure 5: Sites used to classify Lower Forth Estuary for macro invertebrates.