

Figure 1. RRS *Charles Darwin* cruise 112C, Atlantic Margin Environmental Survey 1998: seabed survey of deep-water areas (17th round tranches) to the north and west of Scotland. The ship's track is shown with a schematic representation of the survey areas investigated.

Area 0:	Tranches 19, 21, 22	Area 2:	Blocks 204/14, 204/15
Area 1A:	Tranche 30	Area 3A:	Tranches 60, 61, 62, 63
Area 1B:	Tranches 36, 37, 38, 43, 44, 47, 48, 52, 53	Area 3B:	Tranches 65, 66, 67

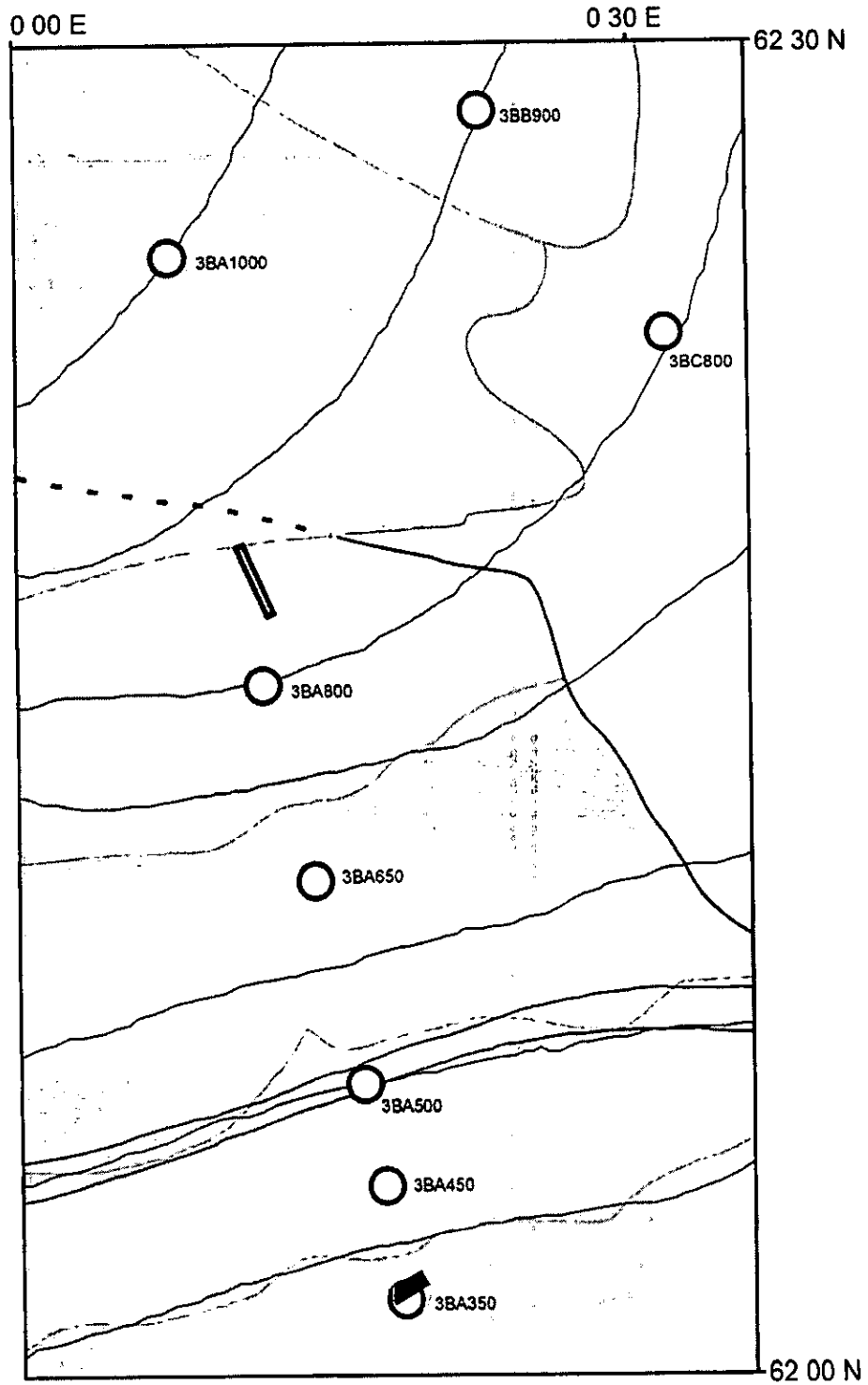


Figure 2. Survey area 3B (tranches 65-67) showing the disposition of seabed sampling stations and tow gear tracks in relation to interpreted TOBI facies.

Key: ○ 3BA350 Seabed sampling station
 // Epibenthic sledge track
 ■ WASP track

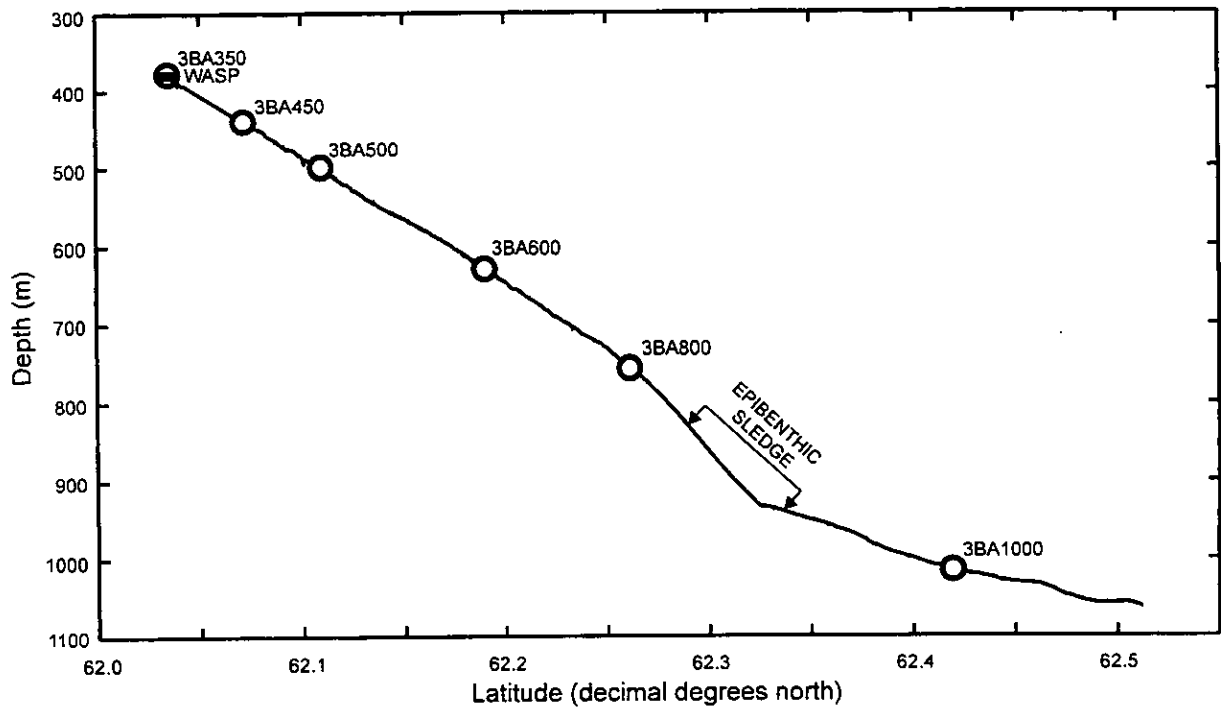


Figure 3. Bathymetric profile of the transect established in survey area 3B (tranches 65-67) showing the positions of seabed sampling stations and tow gear deployments. (Vertical exaggeration X42).

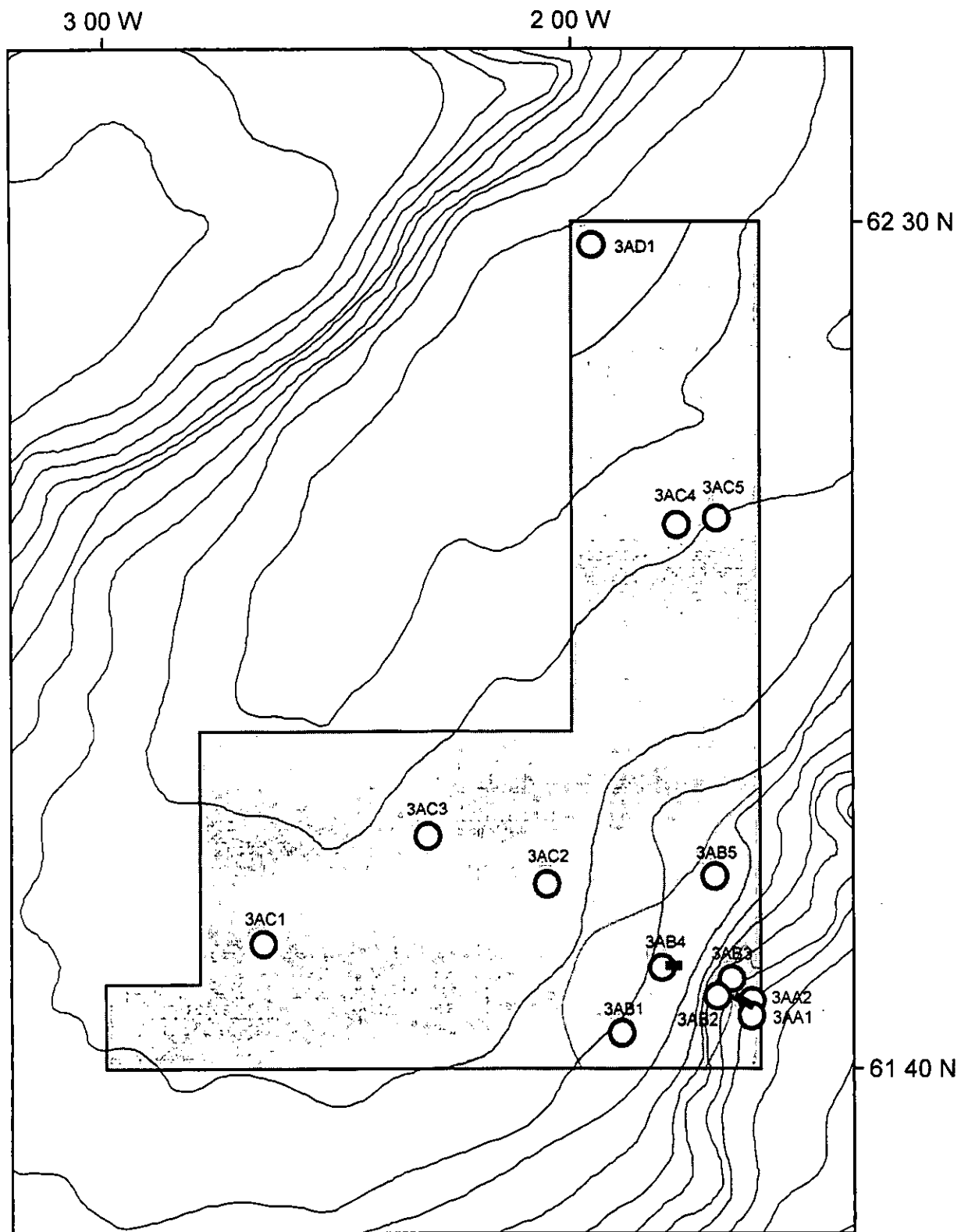


Figure 4. Survey area 3A (tranches 60-63) showing the disposition of seabed sampling stations and tow gear tracks in relation to interpreted TOBI facies.

Key: ○ 3AC1 Seabed sampling station

■ WASP track

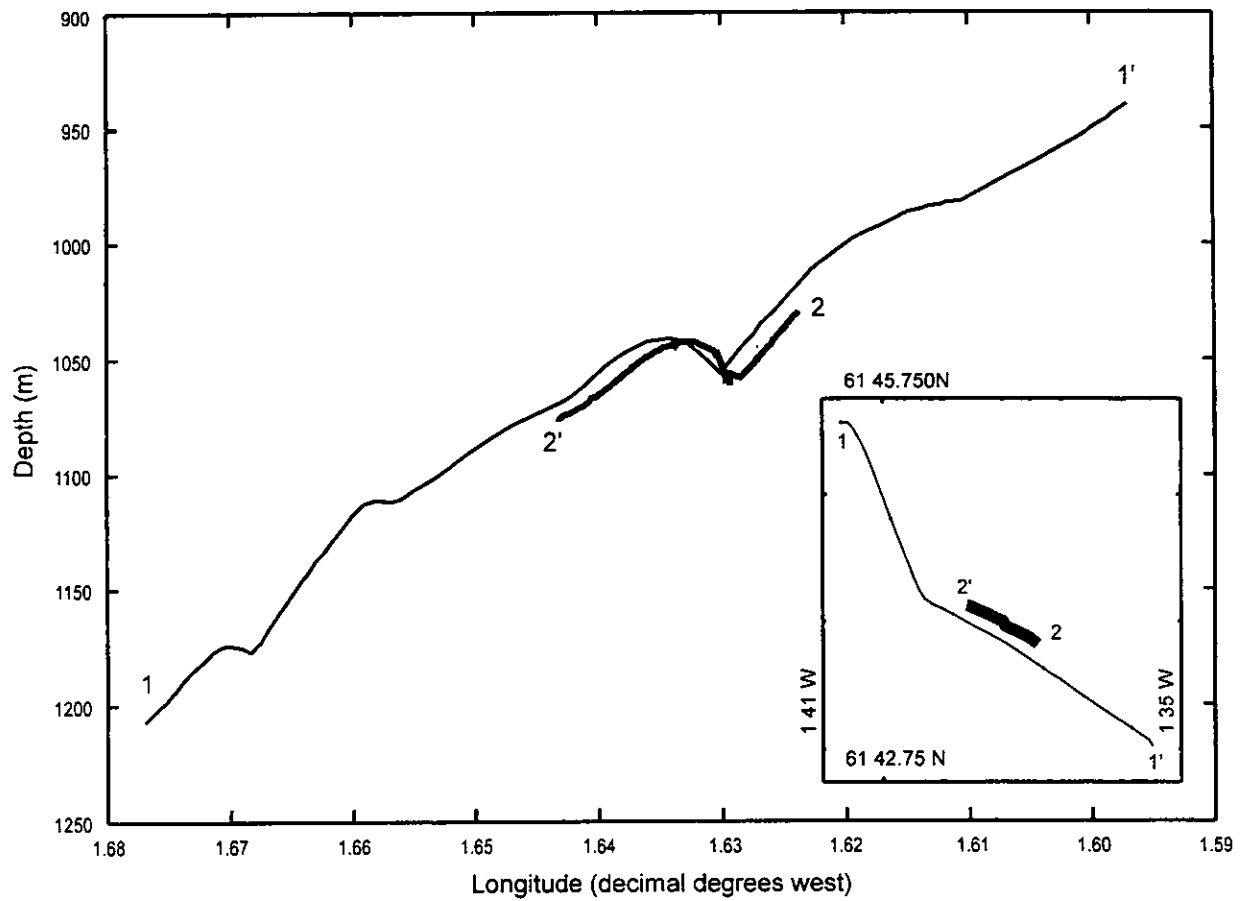


Figure 5. Bathymetric profiles from survey area 3A (tranches 60-63) in the region of seabed furrows (vertical exaggeration X12). Inset chartlet shows corresponding ship's tracks. Line 1-1' shows initial echo-sounding profile, line 2-2' the profile obtained during the period of near-bottom WASP (54520#1) operations.

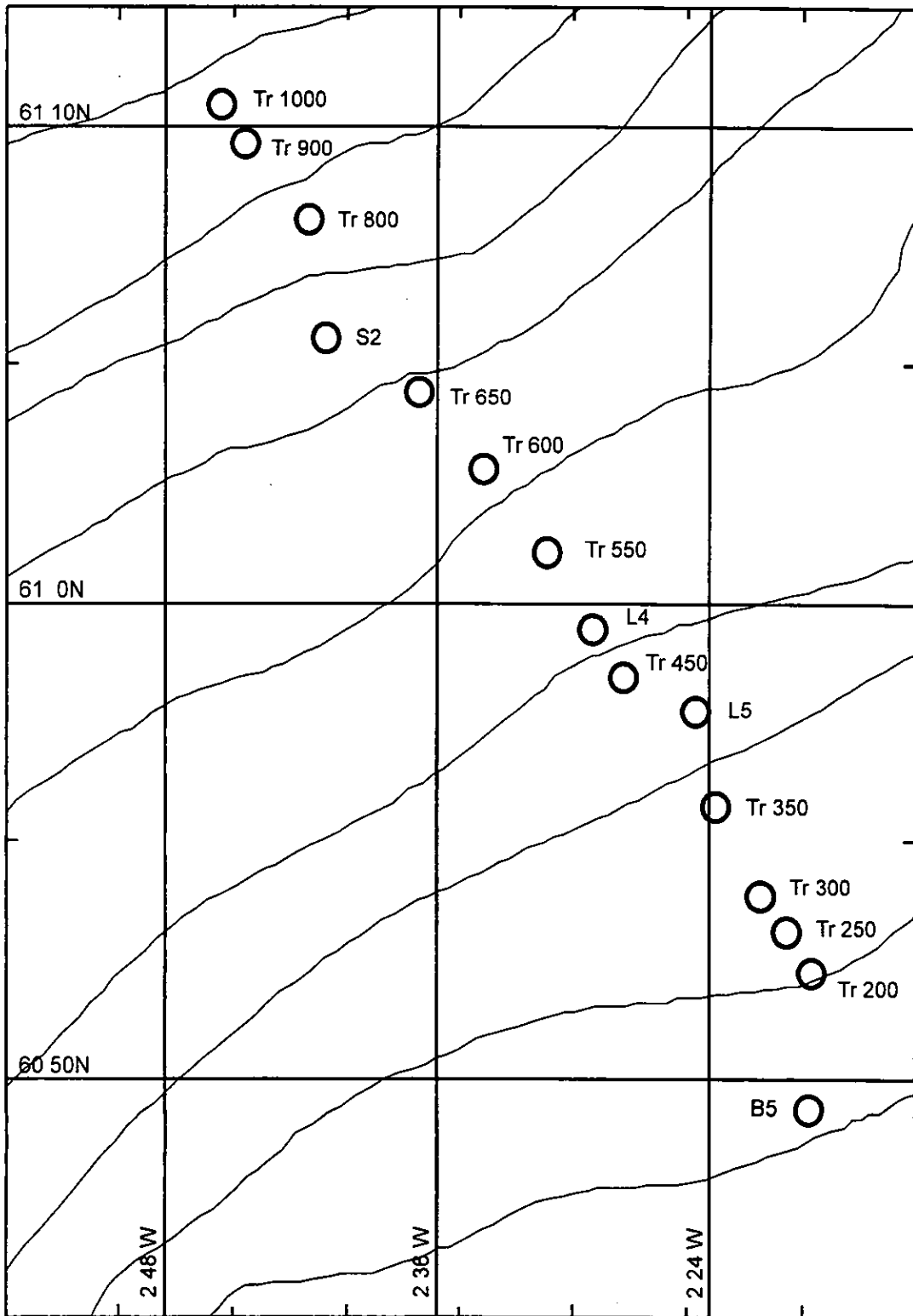


Figure 6. The AMES '96 transect area showing the locations of seabed sampling stations revisited during RRS *Charles Darwin* cruise 112C.

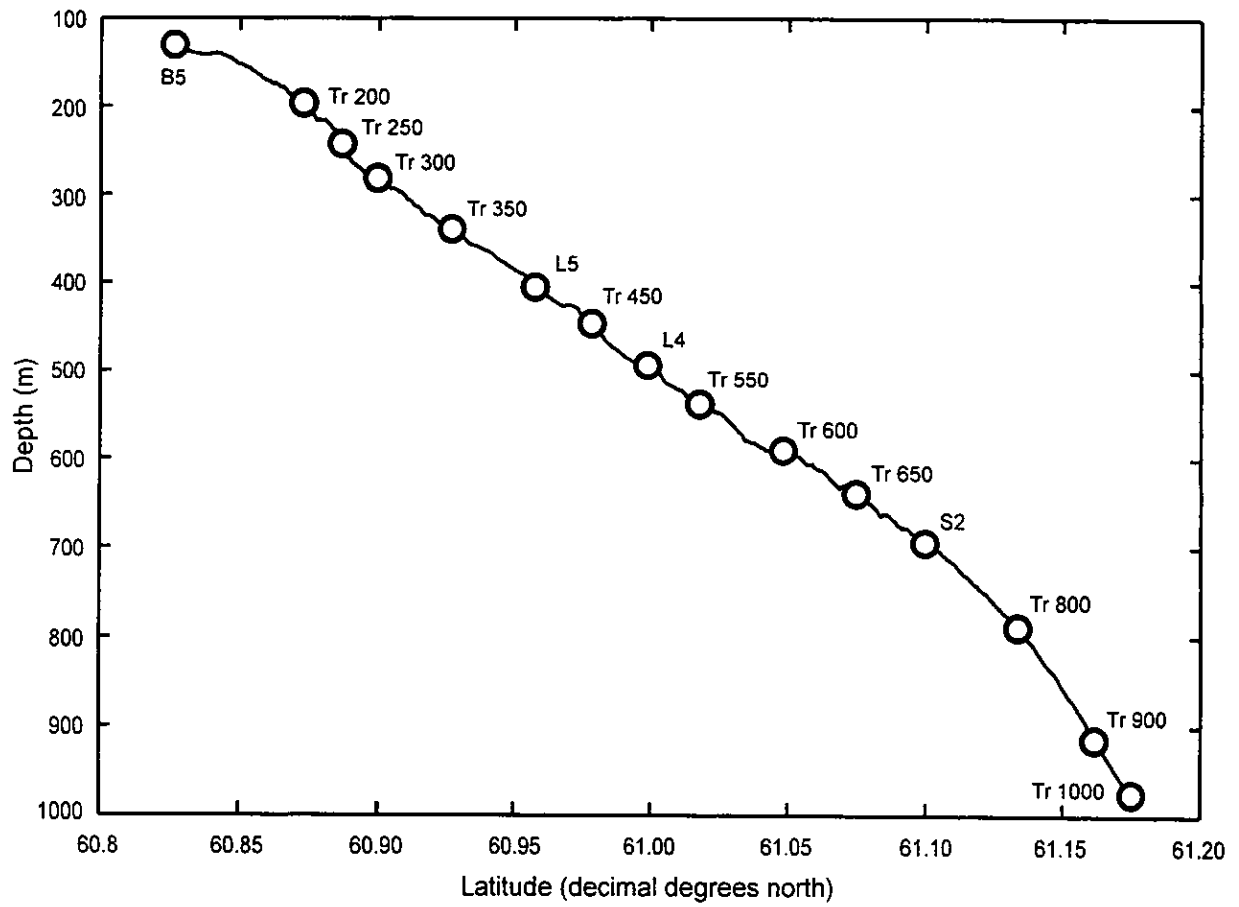


Figure 7. Bathymetric profile of the AMES '96 transect showing the positions of seabed sampling stations revisited during RRS *Charles Darwin* cruise 112C. (Vertical exaggeration X35).

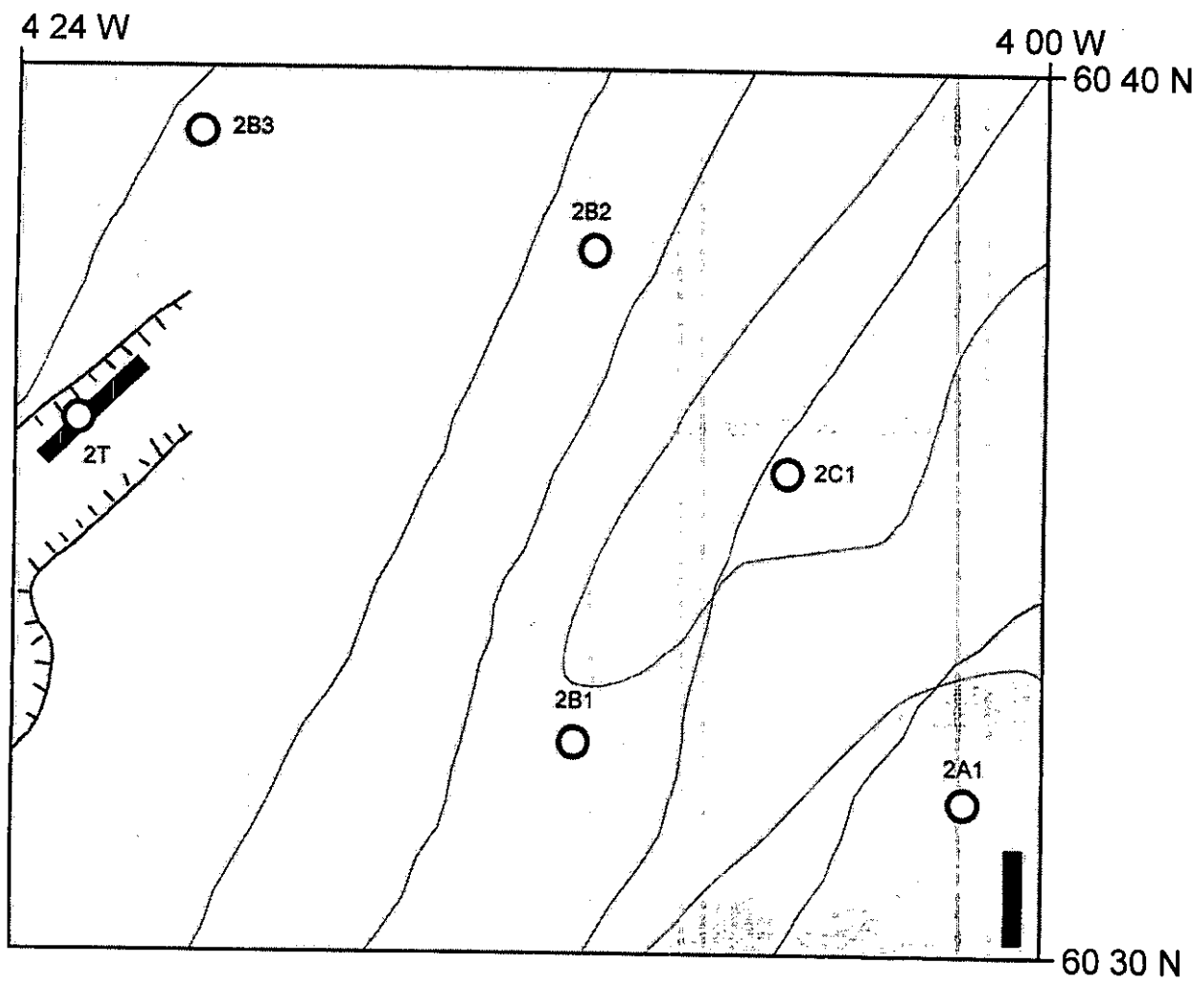


Figure 8. Survey area 2 (blocks 204/14 and 15) showing the disposition of seabed sampling stations and tow gear tracks in relation to interpreted TOBI facies and a trough feature.

- Key: ○ 2B3 Seabed sampling station
 ■ WASP track
 - - - Seabed trough

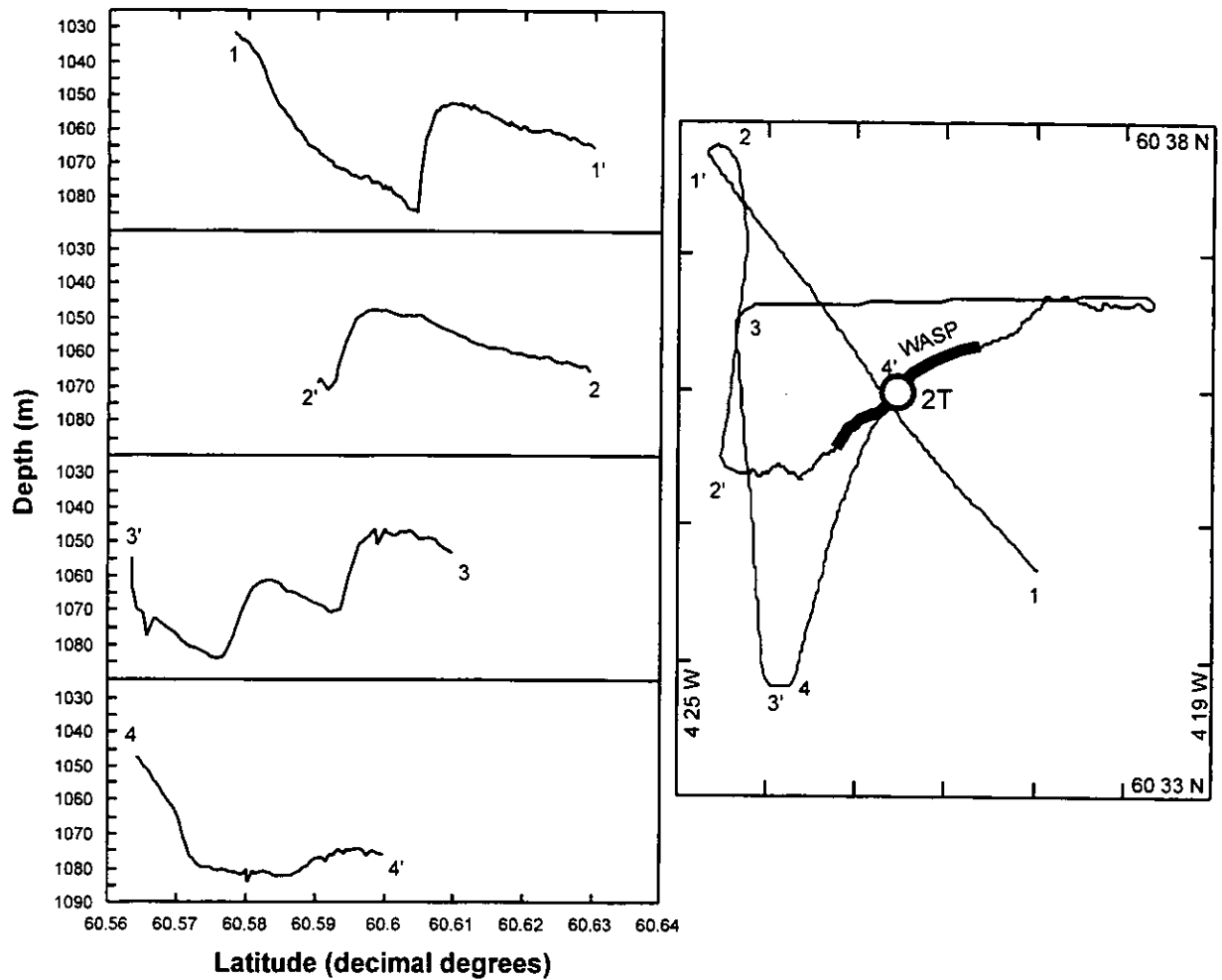


Figure 9. Bathymetric profiles (vertical exaggeration X54) and corresponding ship's track chart with superimposed survey operations in area 2 (blocks 204/14 and 115) in the vicinity of the trough feature. Note that the double scarp on line 3-3' is not present on lines 4-4' nor 1-1'.

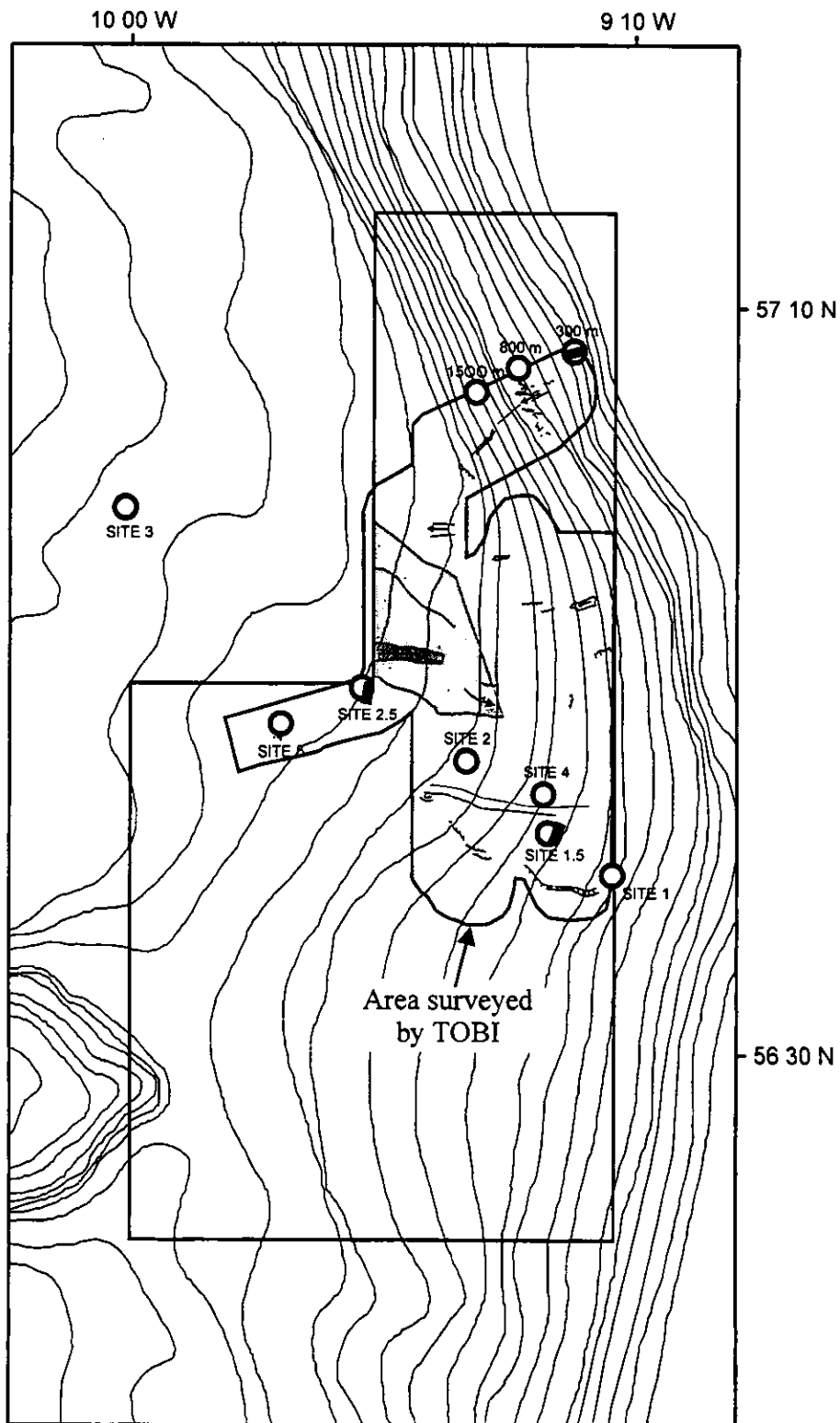


Figure 10. Survey area 0 (tranches 19-22) showing the disposition of seabed sampling stations and tow gear tracks in relation to interpreted TOBI facies.

Key: ● SITE 1 Seabed sampling station
 ■ WASP track

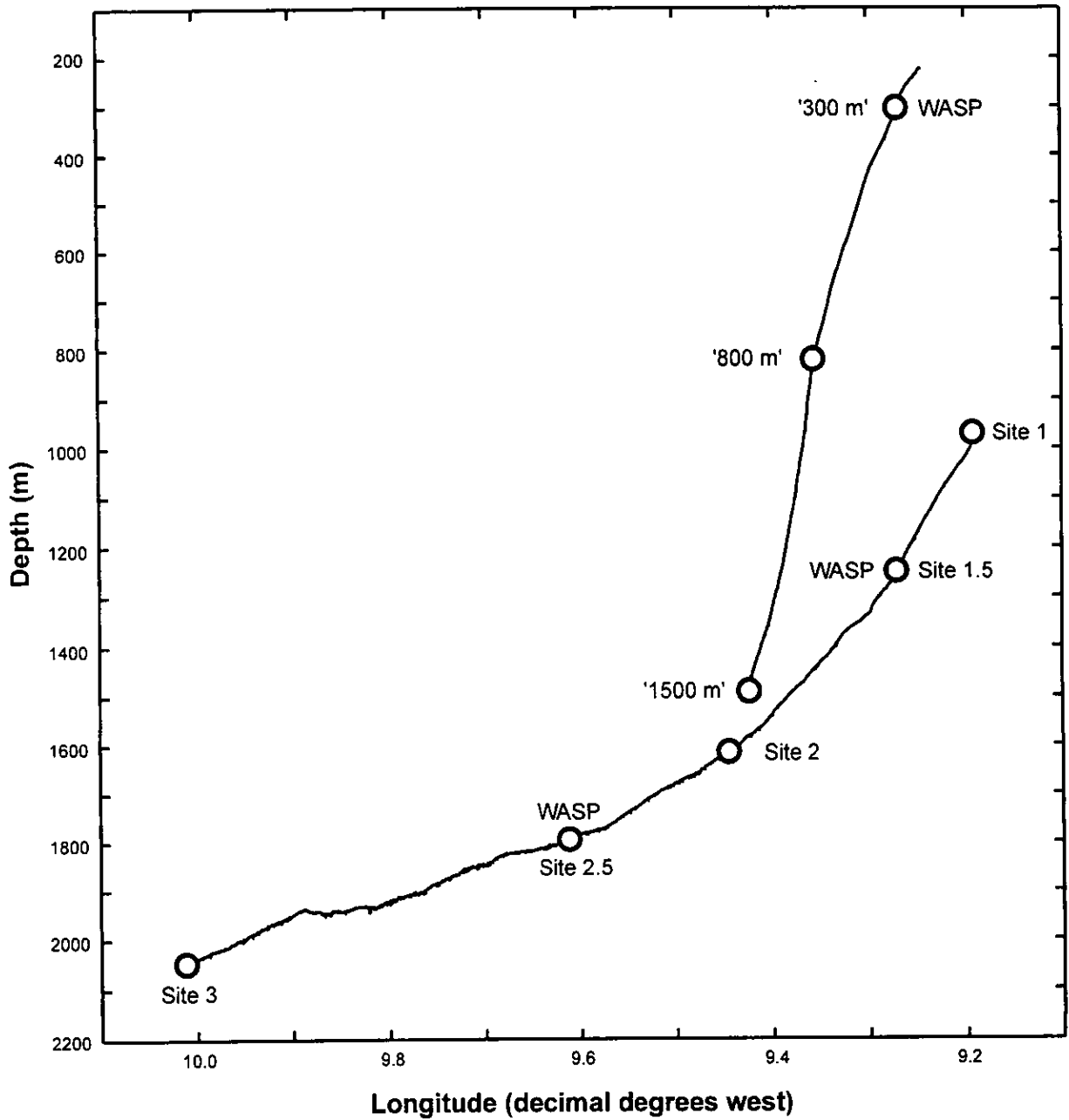


Figure 11. Bathymetric profiles of the two transects established in survey area 0 (tranches 19-22) showing the positions of seabed sampling and WASP stations. (Vertical exaggeration X30).

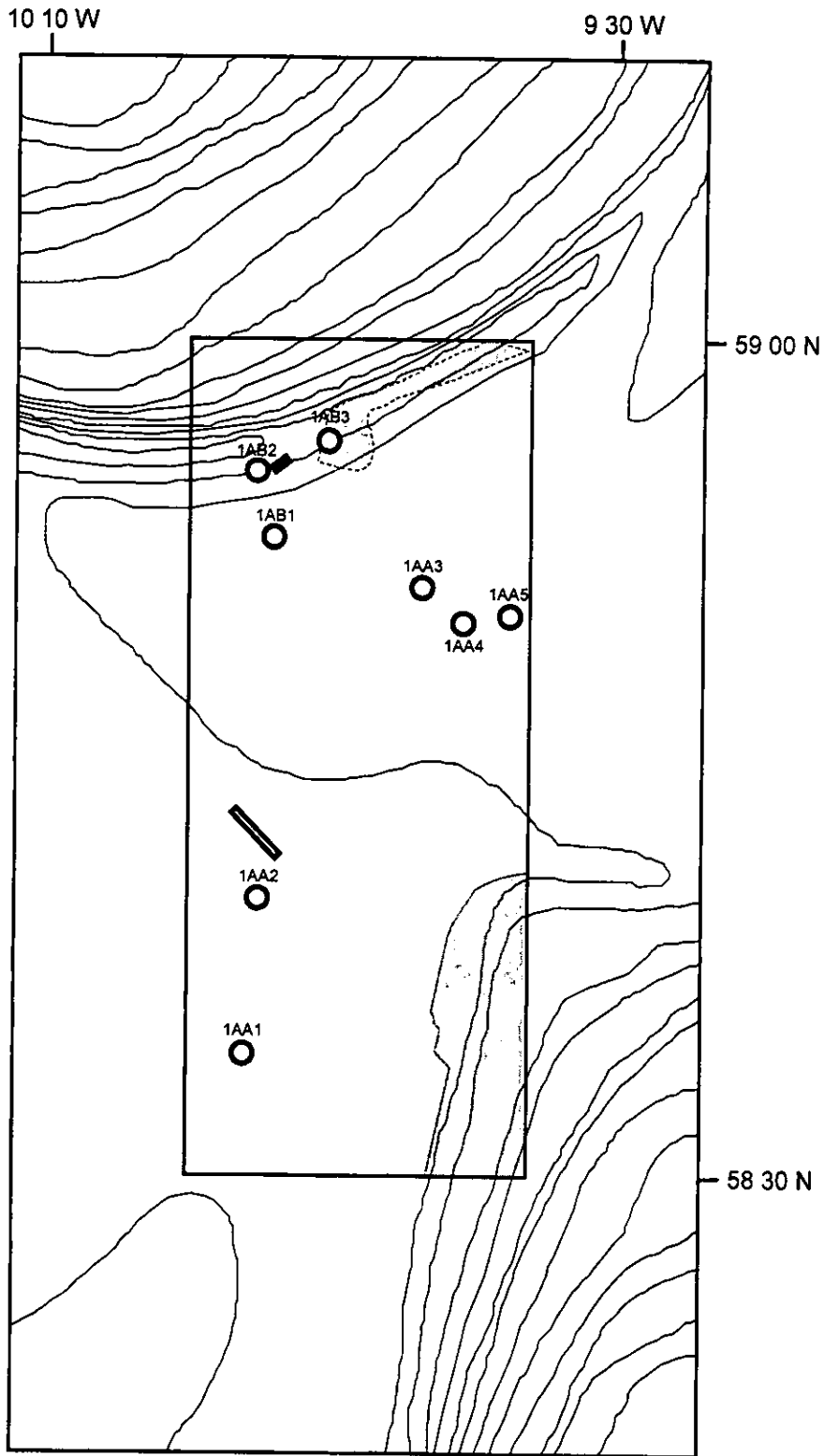


Figure 12. Survey area 1A (tranche 30) showing the disposition of seabed sampling stations and tow gear tracks in relation to interpreted TOBI facies.

- Key: ○ 1AA1 Seabed sampling station
 ▨ Epibenthic sledge track
 ■ WASP track

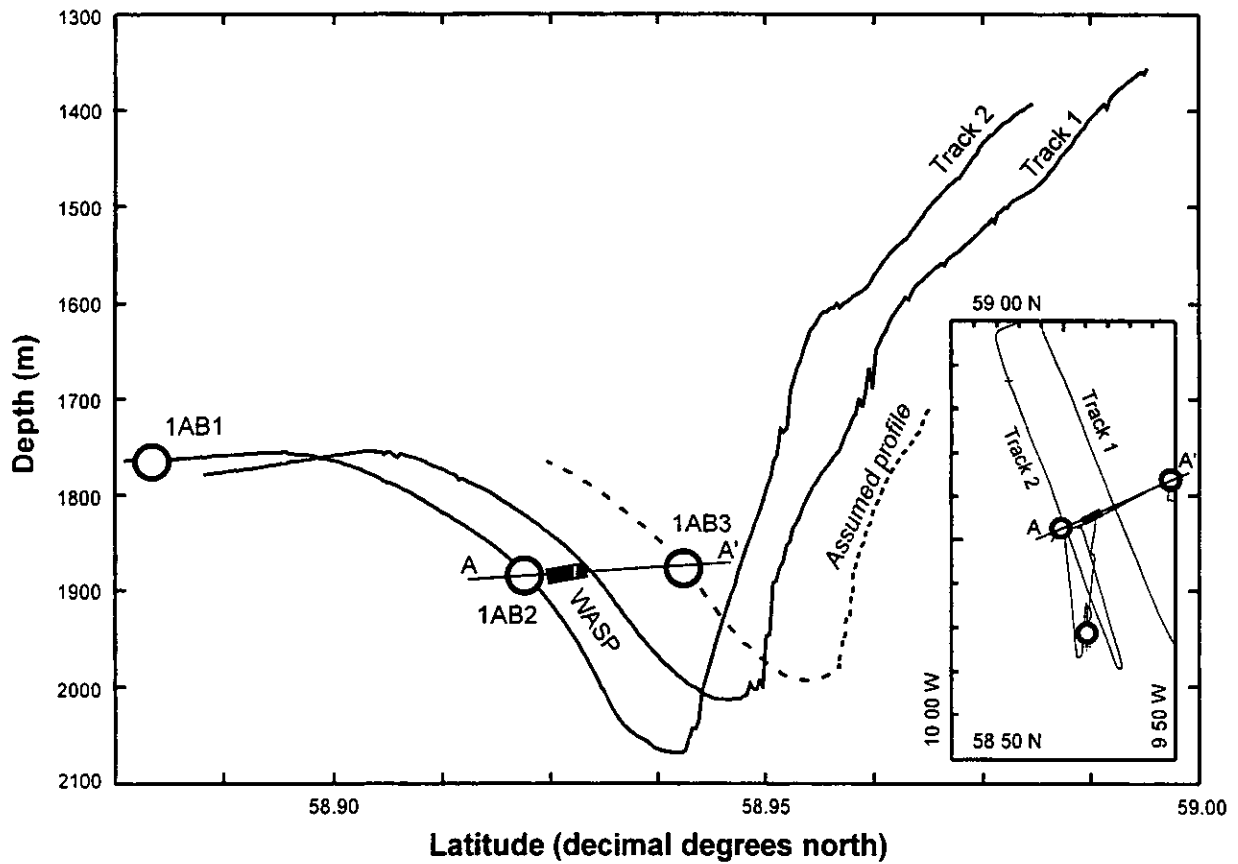


Figure 13. Bathymetric profiles of the moat and lower slopes of Rosemary Bank (northern part of tranche 30) showing the locations of survey operations in that region (sampling stations 1AB1 - 1AB3 and a WASP deployment). See inset chartlet of ship's track for geographic orientation. (Vertical exaggration X12).

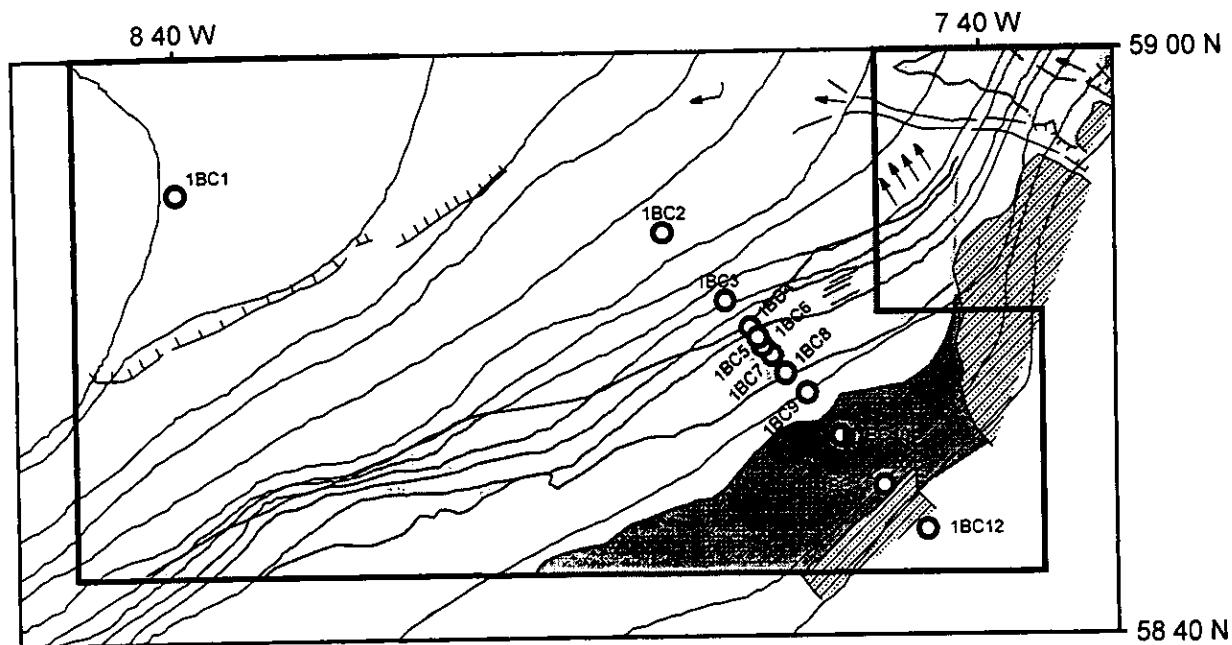


Figure 14. Survey area 1BC (the southern part of tranches 36-53) showing the disposition of seabed sampling stations and tow gear tracks in relation to interpreted TOBI facies and features.

Key: ○ 1BC12 Seabed sampling station
 ■ WASP track

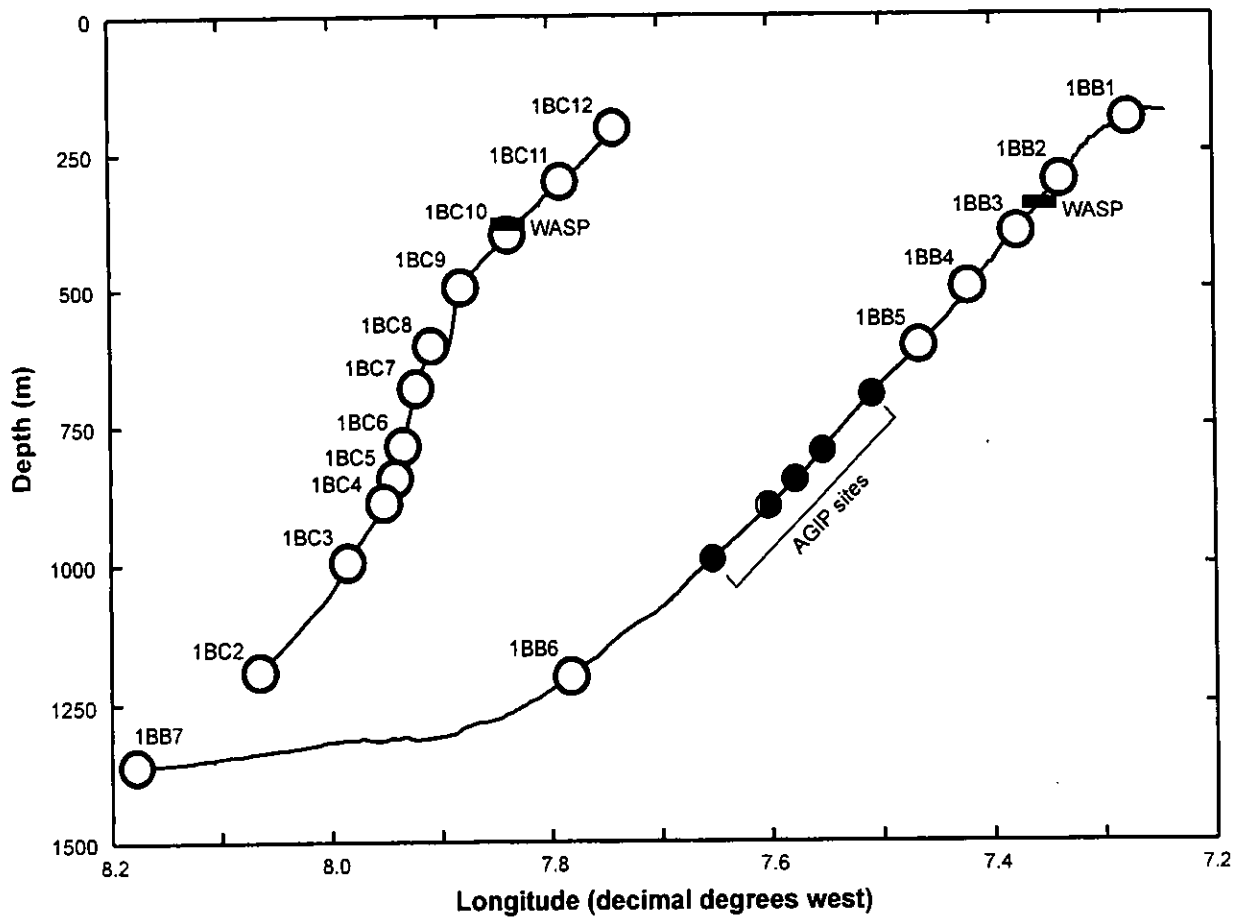


Figure 15. Bathymetric profiles of the two transects established in survey area 1B (tranches 36-53) showing the positions of seabed sampling stations and WASP deployments. Note that the locations of AGIP survey sites on the 1BB transect line are also shown. (Vertical exaggeration X28).

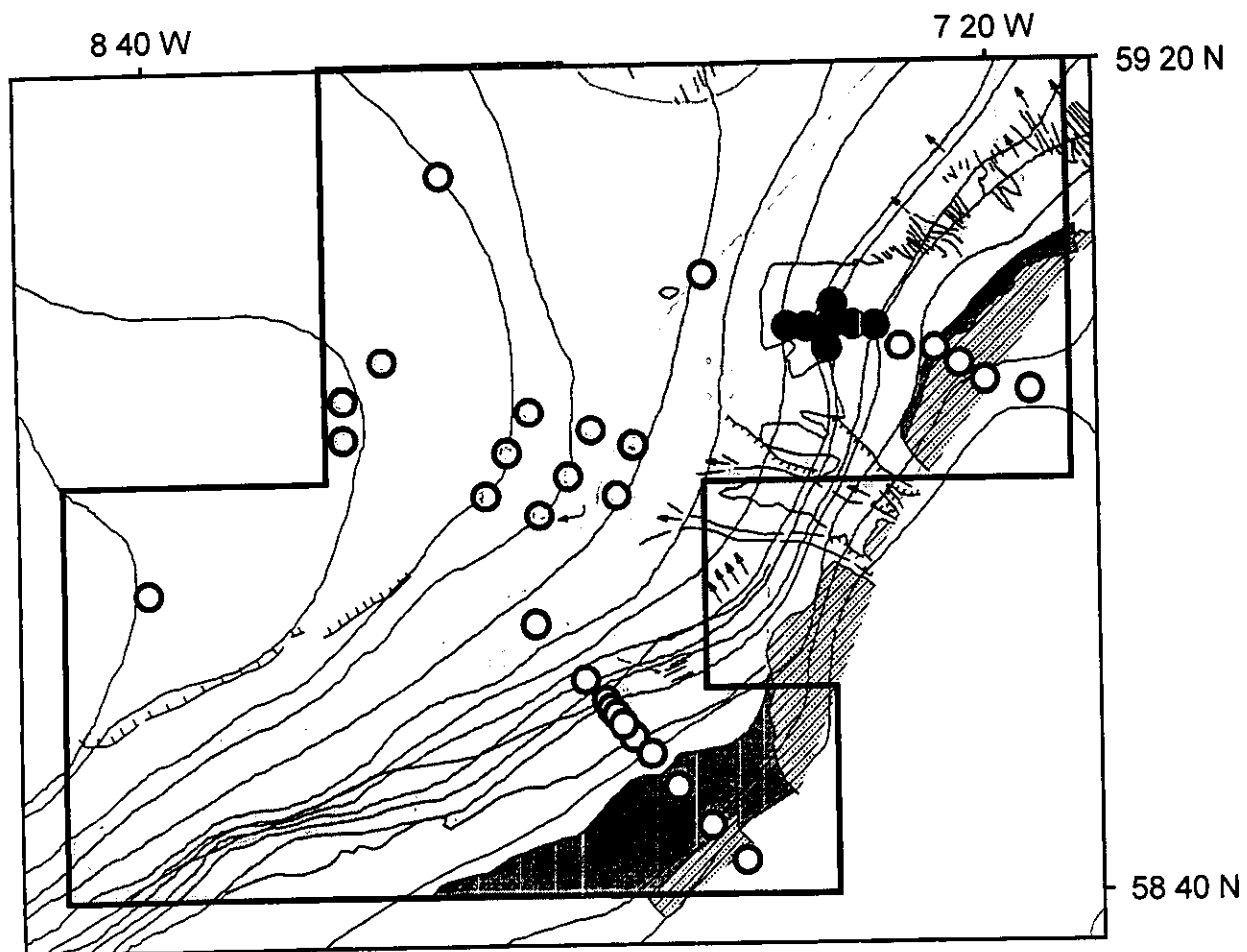


Figure 16. Survey areas 1BB and 1BC (southern part of tranches 36-53) showing the location of seabed sampling stations in relation to the distribution of existing sampling sites in the region.

- Key: ○ Present cruise (AMES '98)
 ⊙ Statoil survey sites
 ● AGIP survey sites

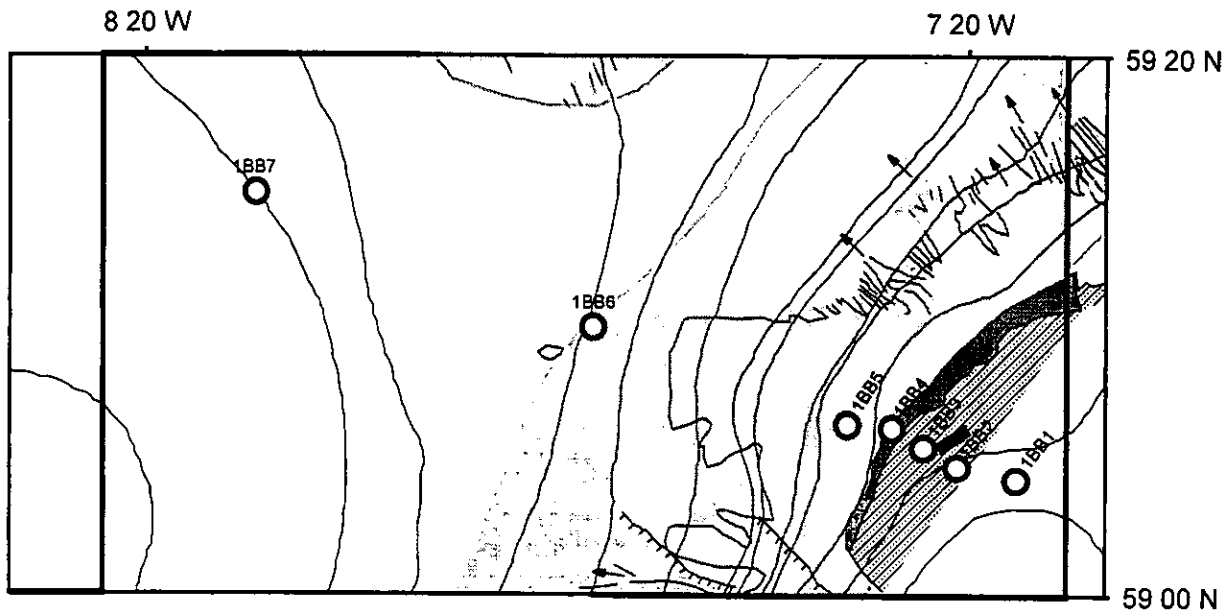


Figure 17. Survey area 1BB (the mid section of tranches 36-53) showing the disposition of seabed sampling stations and tow gear tracks in relation to interpreted TOBI facies and features.

Key: ○ 1BB6 Seabed sampling station
 ■ WASP track

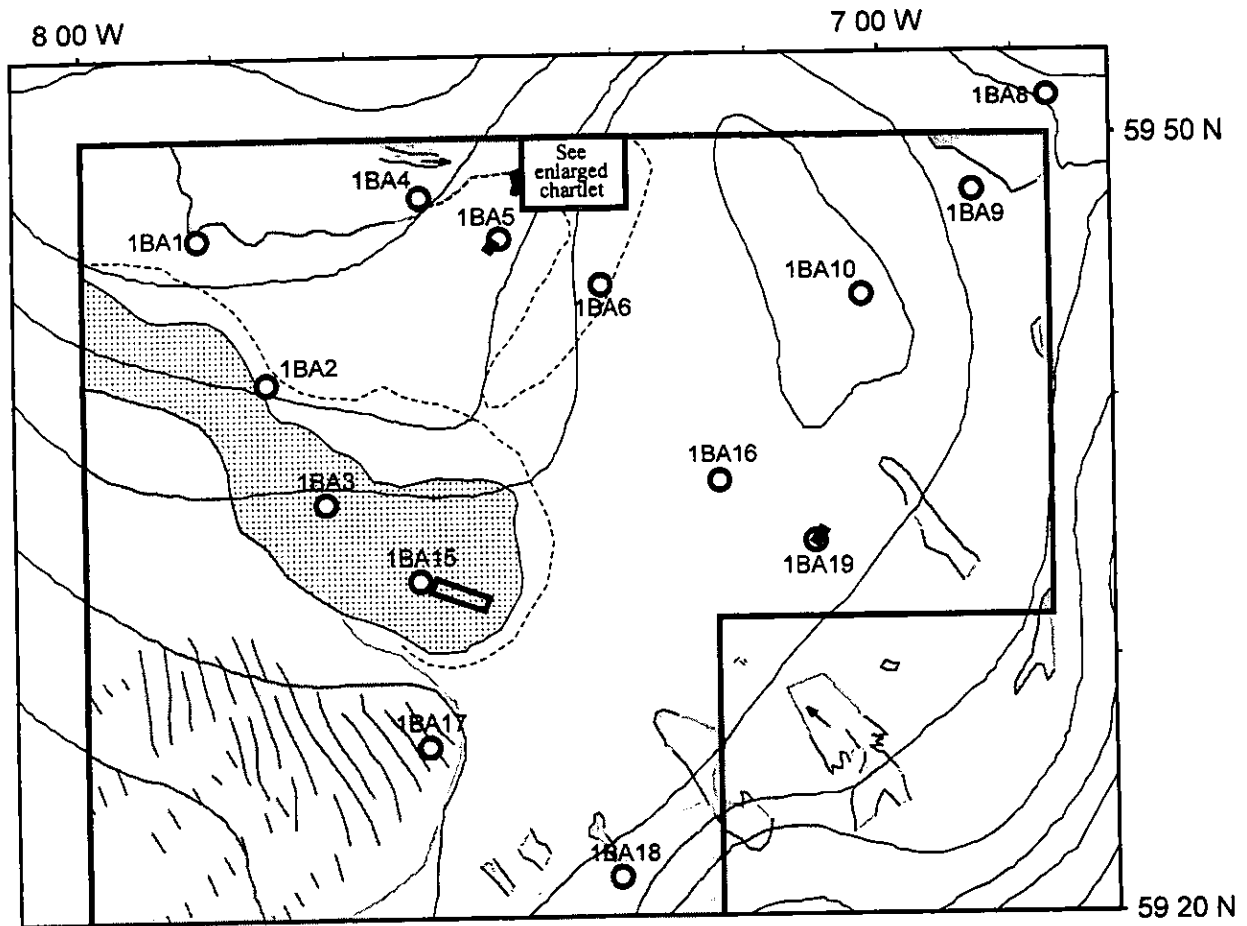


Figure 18. Survey area 1BA (the northern part of tranches 36-53) showing the disposition of seabed sampling stations and tow gear tracks in relation to interpreted TOBI facies and features. Note that operations in the area of seabed mounds, north central region of this chartlet, are not shown here (see figure 19).

Key: ○ 1BA18 Seabed sampling station
 || Epibenthic sledge track
 ■ WASP track

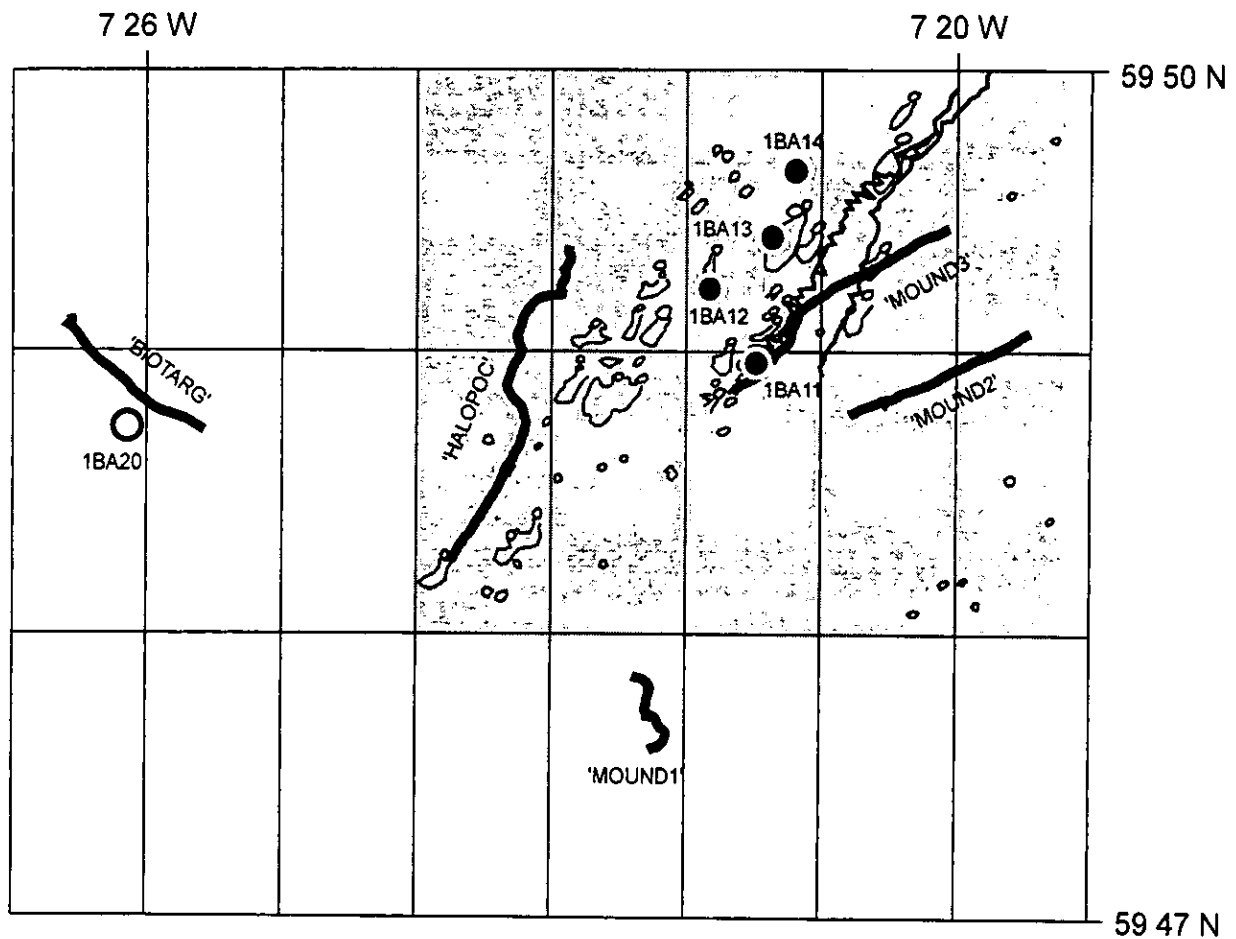


Figure 19. Survey area 1BA (the northern part of tranches 36-53), enlargement of the region of seabed mounds showing the disposition of seabed sampling stations and tow gear tracks. The shaded area includes seabed features from the interpreted TOBI record.

- Key:
- 1BA20 Seabed sampling station
 - 1BA14 Seabed sampling station, plus CTD
 - WASP track
 - Epibenthic sledge track