

Figure 2 - Map showing the sampling sites (from Figure 1) and the results of the sidescan sonar survey.

- 5) Three transects of the disposal site were successfully undertaken with the underwater TV camera system.

- 6) Two areas, the top of the relict deposits in the North – western corner and the proposed capping trail site were surveyed using a sub-bottom –profiler (see Figure 3).

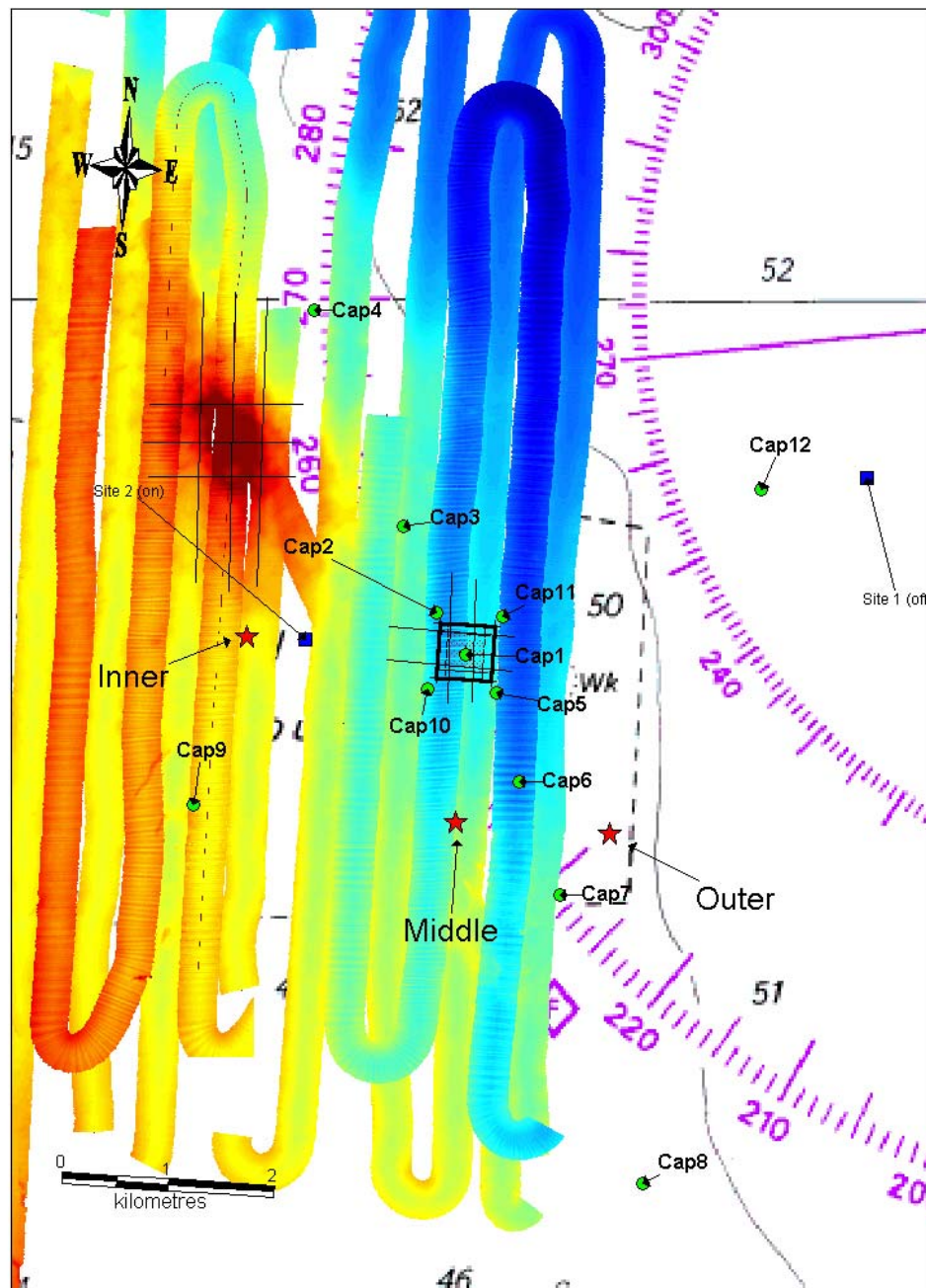


Figure 3 - Map showing the Swathe Bathymetry (collected in 2003), the sampling sites (from figure 1) and also the sub-bottom profiler lines on the top of the pile and also the proposed trail deposit site.

- 7) The Dowsing Waverider was successfully serviced.

Jon Rees

(Scientist-in-Charge)

11/01/03

INITIALLED

DISTRIBUTION

Basic List +

A N Other (i.e. scientists on the cruise)

Julian Metcalfe

.....

.....