

Figure 1: Map showing the location of the Rio Grande Rise (courtesy of GEBCO).

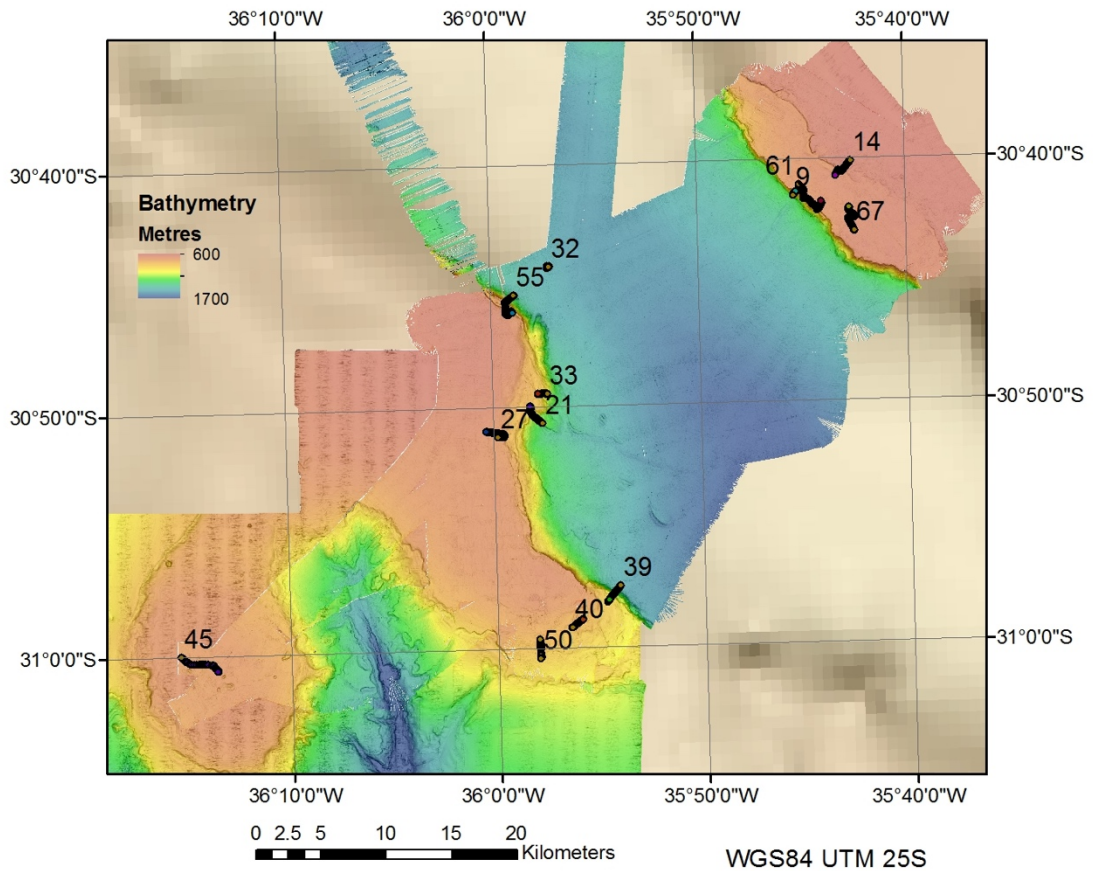


Figure 2: Map showing locations of all thirteen HyBIS dives. Numbers refer to stations. Background colour map is DY094 multibeam bathymetry data. Background beige map is GEBCO.

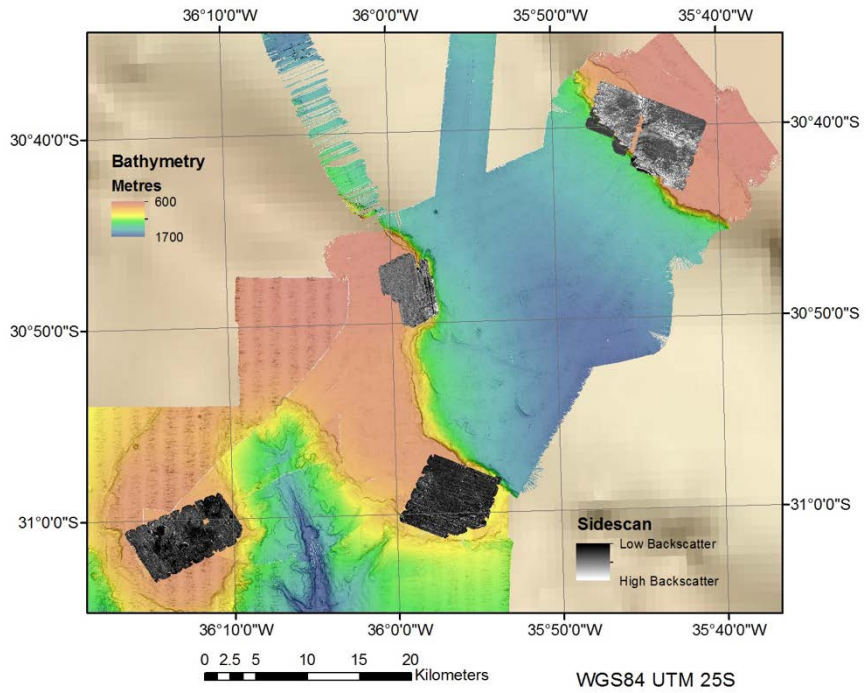


Figure 3: Map showing the coverage of sidescan sonar data by the Autosub6000 missions. A total of 5 missions were occupied..

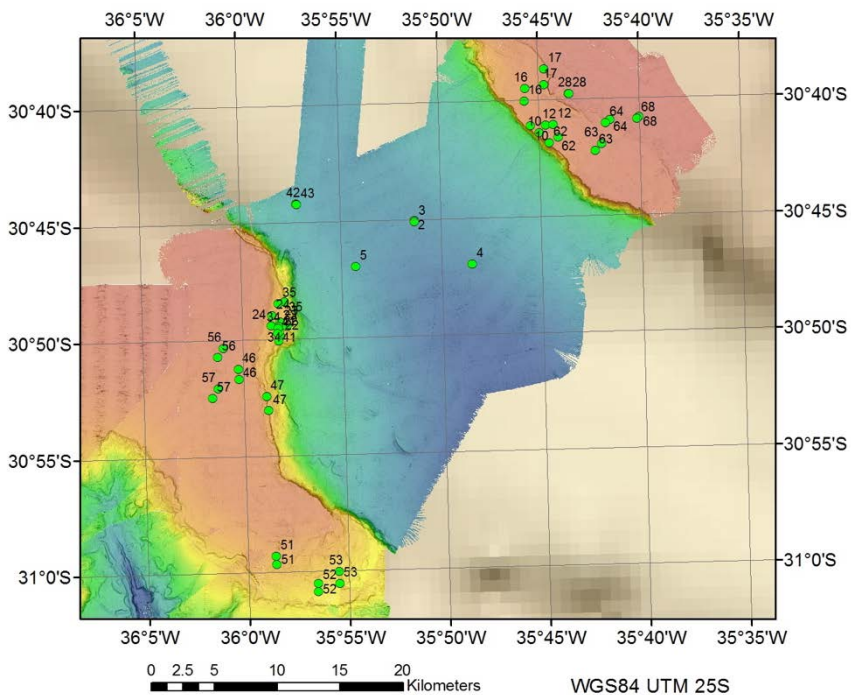


Figure 4: Map showing locations of all dredge and gravity core locations. Numbers refer to stations. Coring was in the rift floor (blue area).