

CHART SERIES  
BRITISH ISLES  
**APPROACHES TO THE BRISTOL CHANNEL**  
DEPTHS IN METRES  
SCALE 1:50,000 as of 2010

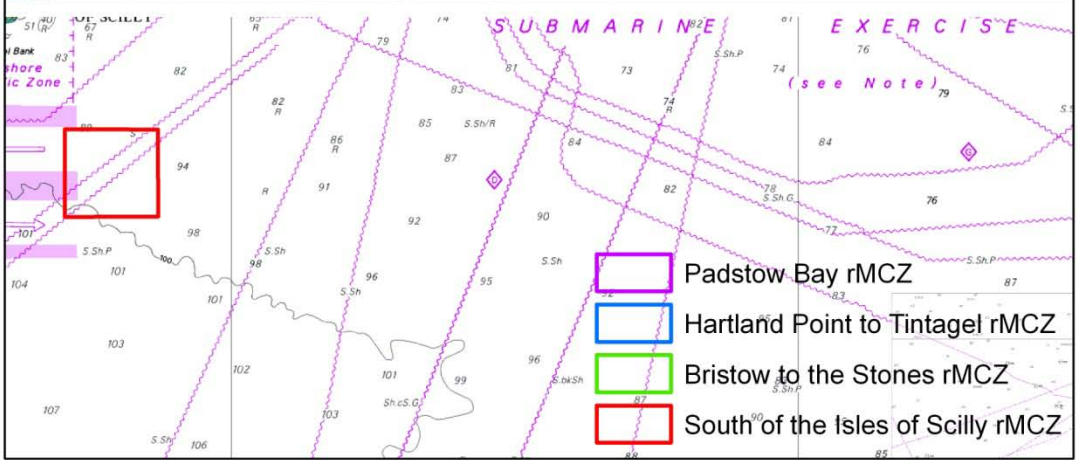
**DEPTHS IN METRES**  
Chart Depths are in metres and are referred to Chart Datum, which is the mean low water level of the lowest astronomical tide. The datum is the vertical datum of the chart. The chart is based on the datum of the lowest astronomical tide. The datum is the vertical datum of the chart. The datum is the vertical datum of the chart. The datum is the vertical datum of the chart.

Table 1: Tide Levels referred to Datum of Soundings

Time	Low	Mid	High	Spring	Neap
Mean High Water	0.00	0.10	0.20	0.30	0.40
Mean Low Water	-0.10	-0.20	-0.30	-0.40	-0.50
Mean Range	0.10	0.20	0.30	0.40	0.50
Mean Range	0.10	0.20	0.30	0.40	0.50
Mean Range	0.10	0.20	0.30	0.40	0.50
Mean Range	0.10	0.20	0.30	0.40	0.50

Table 2: Tide Stream Currents to one of six PMD points

Point	01	02	03	04	05	06
01	0.10	0.20	0.30	0.40	0.50	0.60
02	0.10	0.20	0.30	0.40	0.50	0.60
03	0.10	0.20	0.30	0.40	0.50	0.60
04	0.10	0.20	0.30	0.40	0.50	0.60
05	0.10	0.20	0.30	0.40	0.50	0.60
06	0.10	0.20	0.30	0.40	0.50	0.60



**SUBMARINE EXERCISE**  
(see Note)

- Padstow Bay rMCZ
- Hartland Point to Tintagel rMCZ
- Bristow to the Stones rMCZ
- South of the Isles of Scilly rMCZ