

(mbar), Conductivity sensor water temperature (°C). Sea surface temperature, salinity and transmittance were calibrated against the CTD by BODC.

Data were recorded every minute from 08:04 on 11 May, near Puffin Island on the way out, until 09:55 on 14 May, near Puffin Island on the way back. The system failed to record data from 14:18 to 19:15 on 12 May, from 06:37 to 07:26 on 13 May and at 04:50 on 13 May. Copies of the data were taken off the ship as an Excel file, along with a copy of the ship's navigation data.

The ship was fitted with a 300 kHz ADCP set to record 25 x 2m bins, the bin nearest the surface was at 5.1 m depth, every 30 seconds with 29 pings / ensemble. Data were recorded between 08:04 on 11 May and 09:55 on 14 May, with gaps when it was switched off during side scan surveys to avoid interference with side scan sonar.

7. Side scan sonar survey and grab sampling

The side scan sonar survey occupied 16 east-west lines 6.6 km long and 200 m apart, between 3° 20' W and 3° 26' W (Figure 2). The ship steamed at about 4 knots and the fish was about 10 m off the bed. 14 grab samples were obtained with a shipek grab along three of the lines.

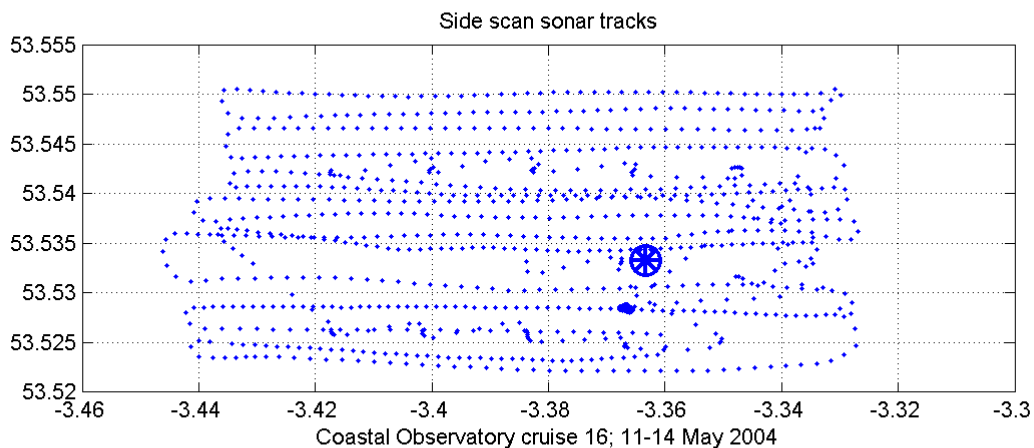


Figure 2. Map of the side scan sonar survey.

Acknowledgements

The assistance of the Captain, officers, bosun, and crew contributed greatly to the success of the cruise.