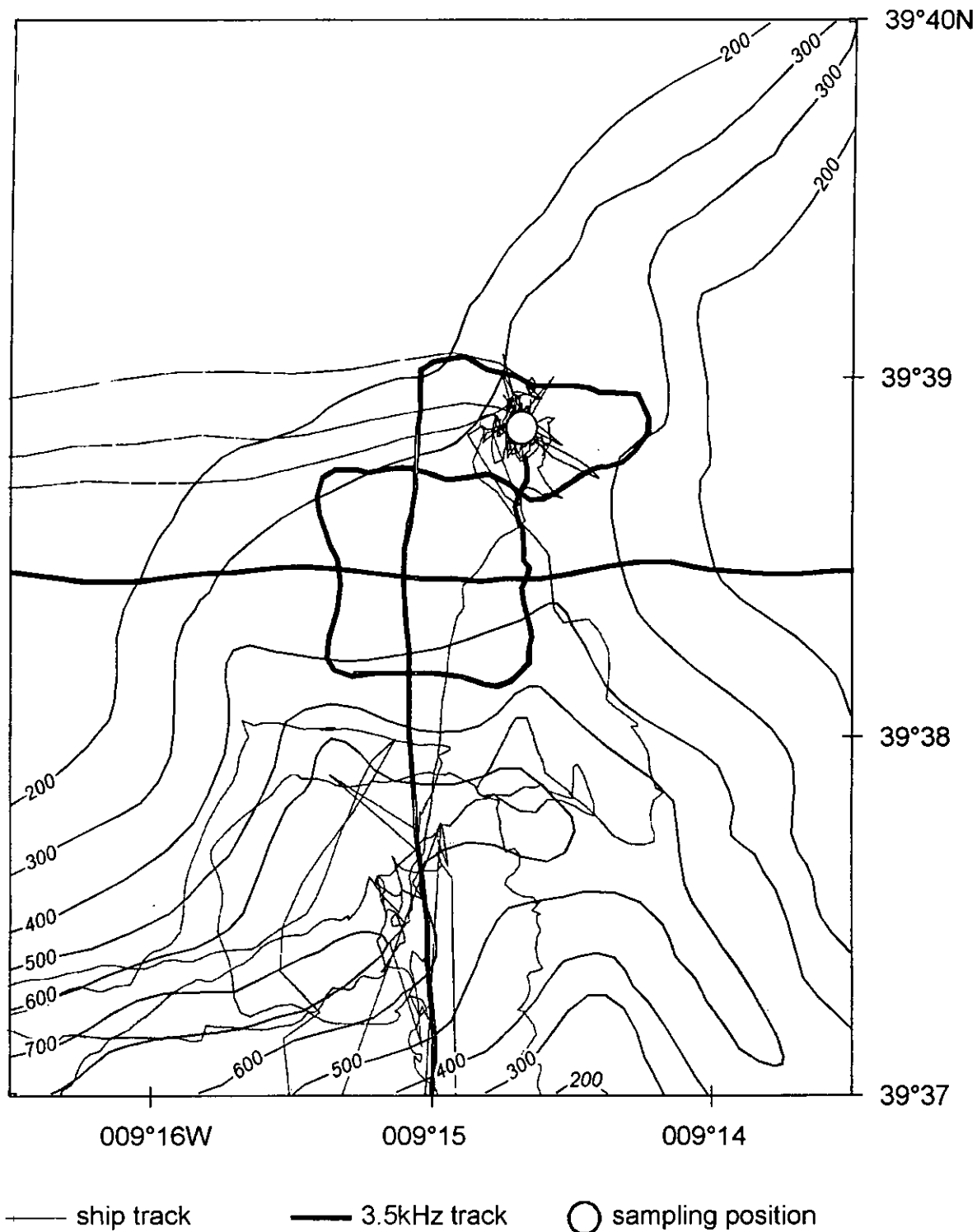


Fig. 2.1. Simplified map of the W. Iberian continental margin, with cruise track and position of sampling stations.

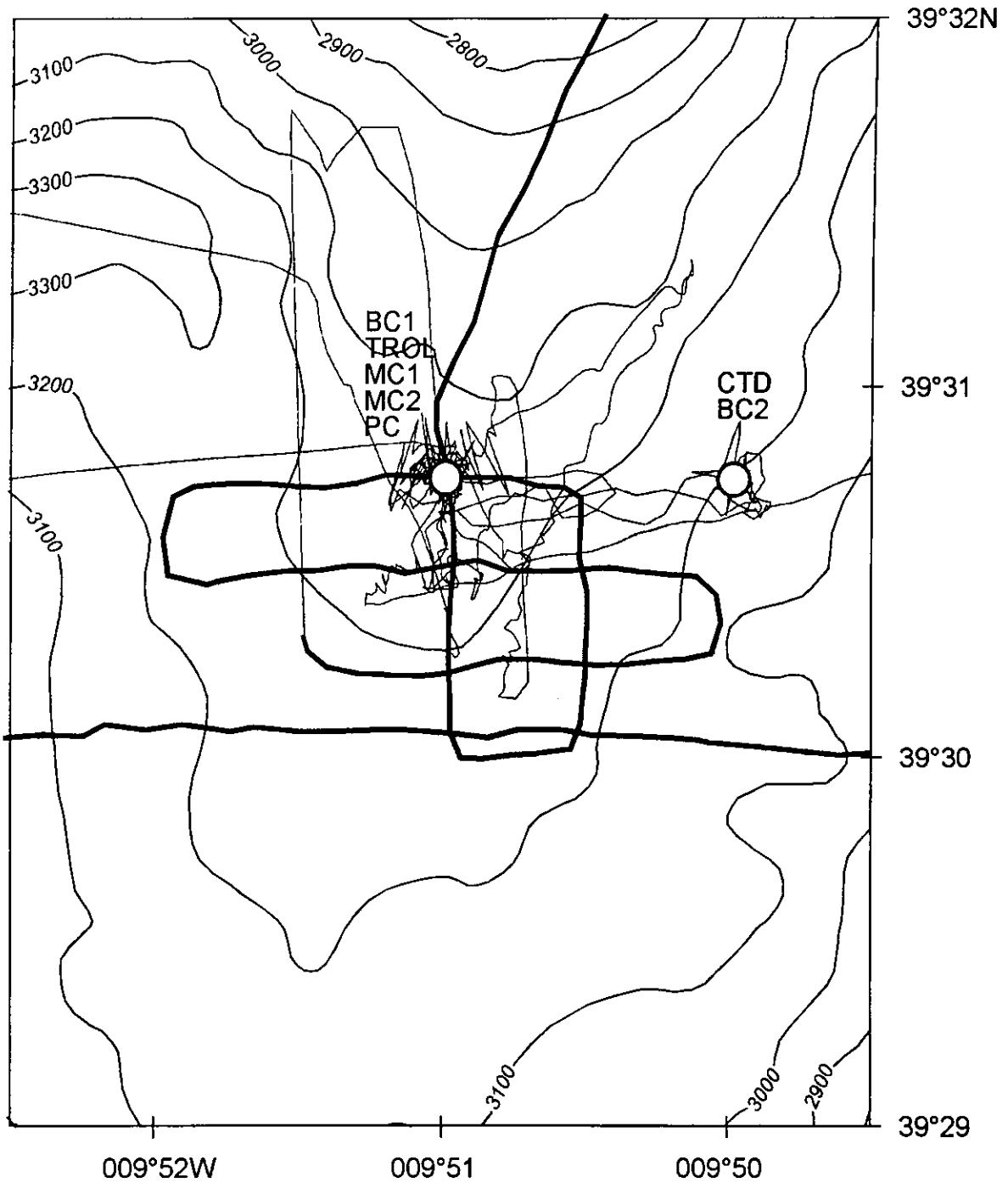
Activities at station 64PE138-01 commenced on 12 May with deployment of a CTD with water sampling. Two casts of the multi corer, one destined for the OMEX geochemical

APPENDIX D
MAPS OF STATIONS AND TRACKLINES

Station 64PE138-12

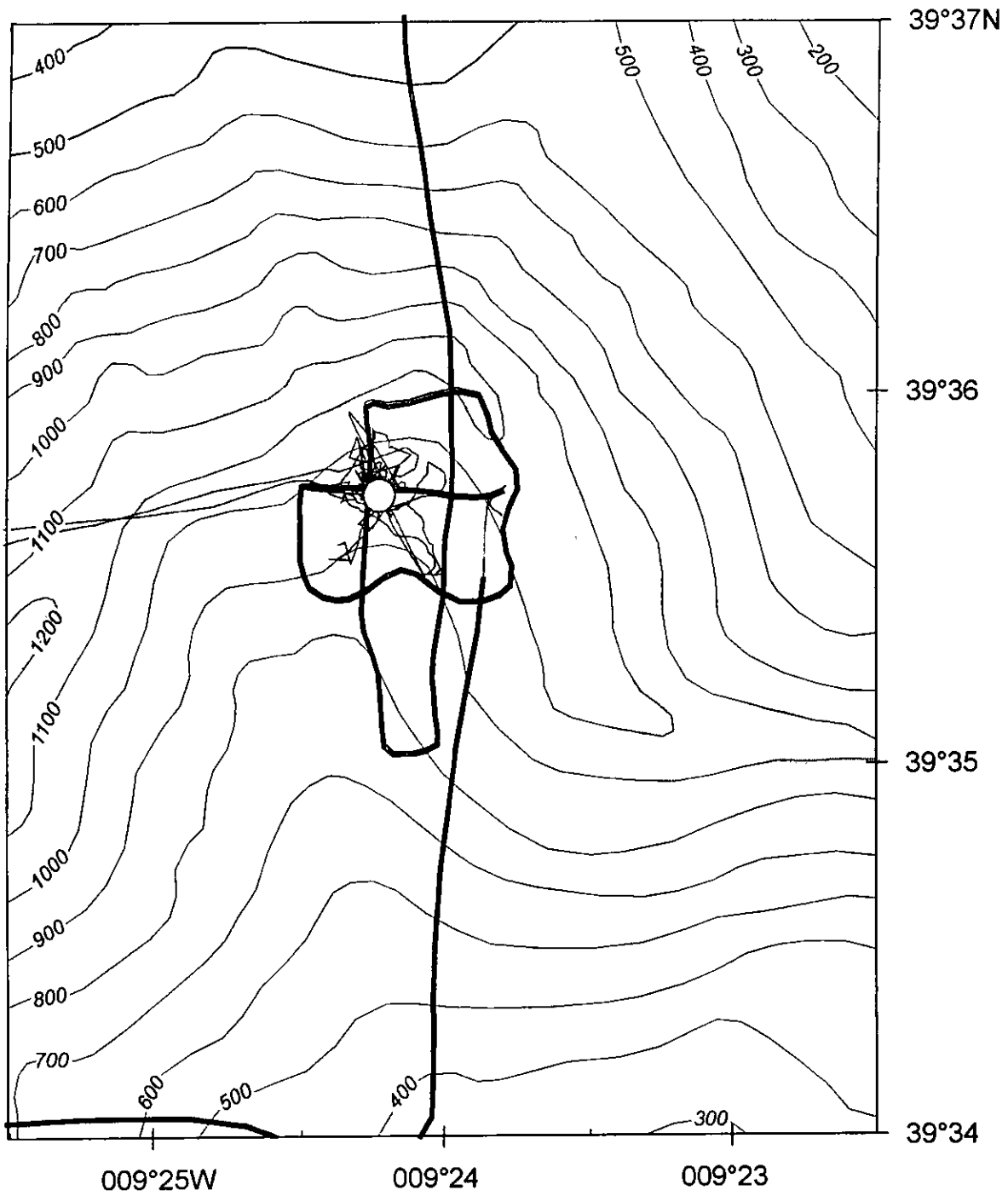


Station 64PE138-14



— ship track — 3.5kHz track ○ sampling position

Station 64PE138-16

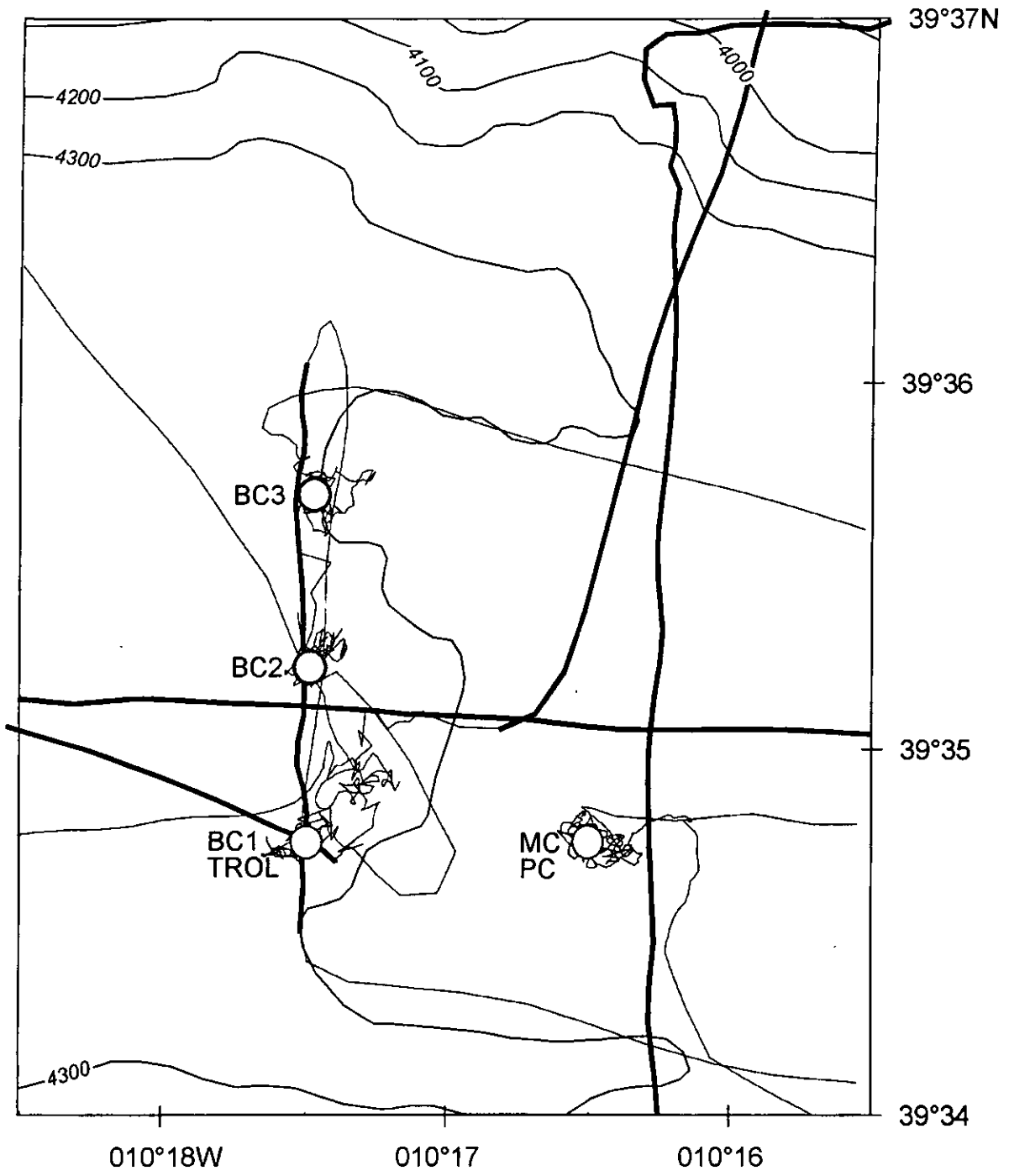


— ship track

— 3.5kHz track

○ sampling position

Station 64PE138-17



— ship track — 3.5kHz track ○ sampling position

Station 64PE138-17

